



# Pedestrian Network



# Pedestrian Network Benefits

Walking is an important part of a multi-modal network, allowing people to safely travel to local destinations and access transit services which connect them with destinations across the city. Filling critical sidewalk gaps will:

- Enable people to **walk safely and in comfort** to any place they need to go.
- **Provide connections** between bus stops and jobs.

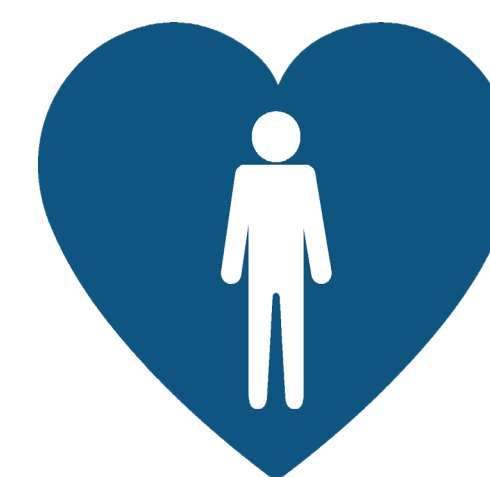
## Benefits include:



Create a more **comfortable pedestrian network** and contribute to **neighbourhood vibrancy**.



Create a more **accessible pedestrian experience** for all Londoners.



**Increase the feeling of, and actual safety** while walking or rolling.



Reduces greenhouse gas emissions, contributing to a **healthier environment for all**.

"Pedestrian and transit-oriented design helps us offer a high quality of life in London and allows us to develop neighbourhoods, places and spaces that function more effectively and safely for everyone." - The London Plan

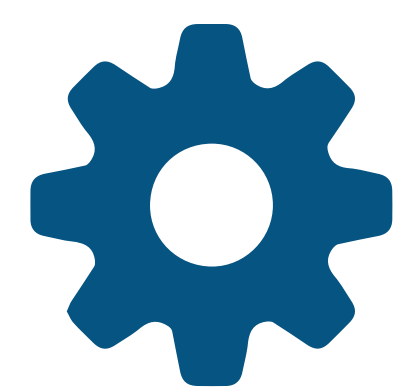
# Draft Policies and Actions - Pedestrians



Support sidewalk infrastructure with elements that create a pleasant walking environment with trees and other landscaping, increased setbacks, and interesting building frontages.



Improve the safety and convenience of crossing at signalized intersections. Expand use of Leading Pedestrian Intervals and develop guidance on maximum wait times, where appropriate.

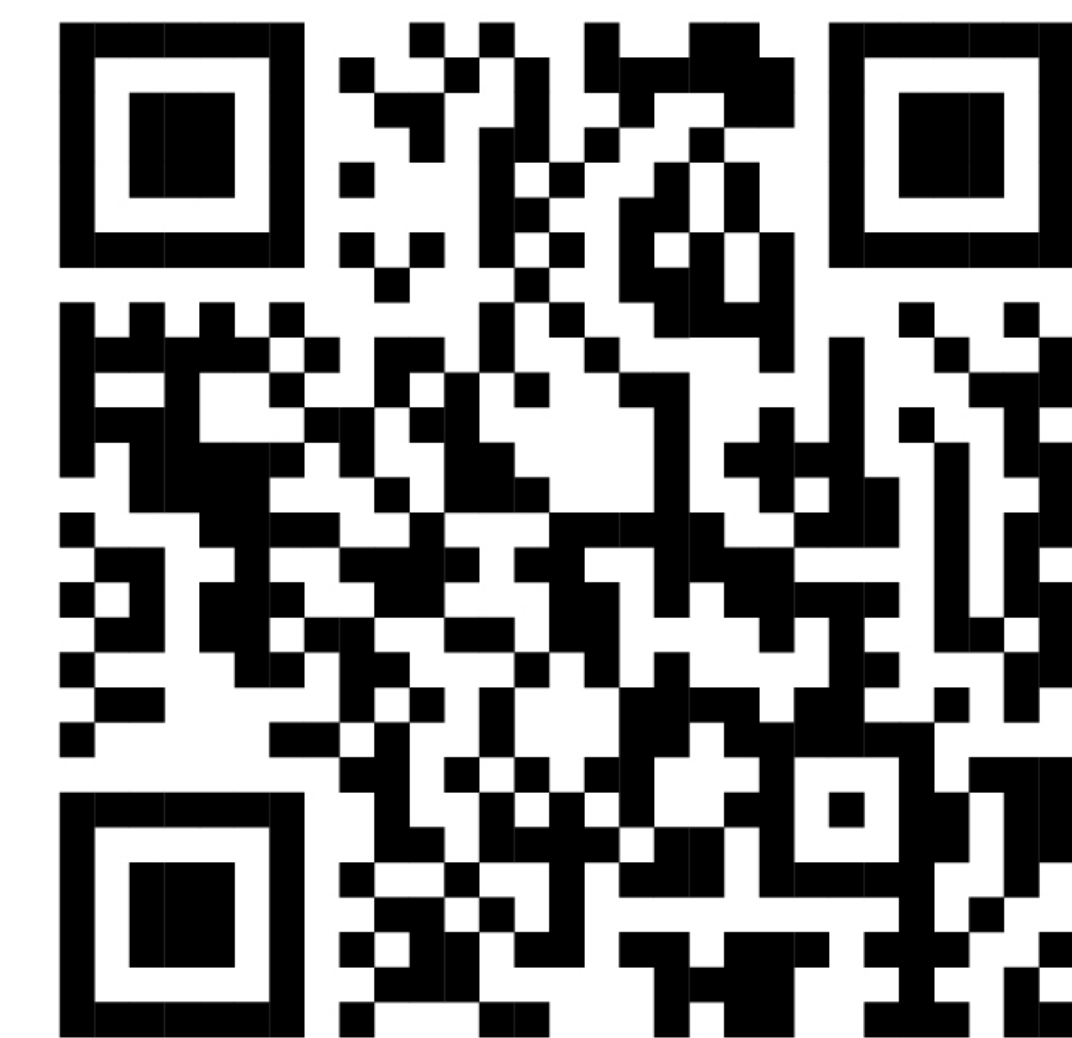


Implement a range of behaviour change incentives to encourage walking (school travel, work travel or to meet other daily needs).



Prioritize the addition of sidewalks to transit stops where there is no connecting sidewalk.

**To learn more**



**Policies and Actions are critical to support the success of the mobility network in the near-term, and over the next 25 years.**



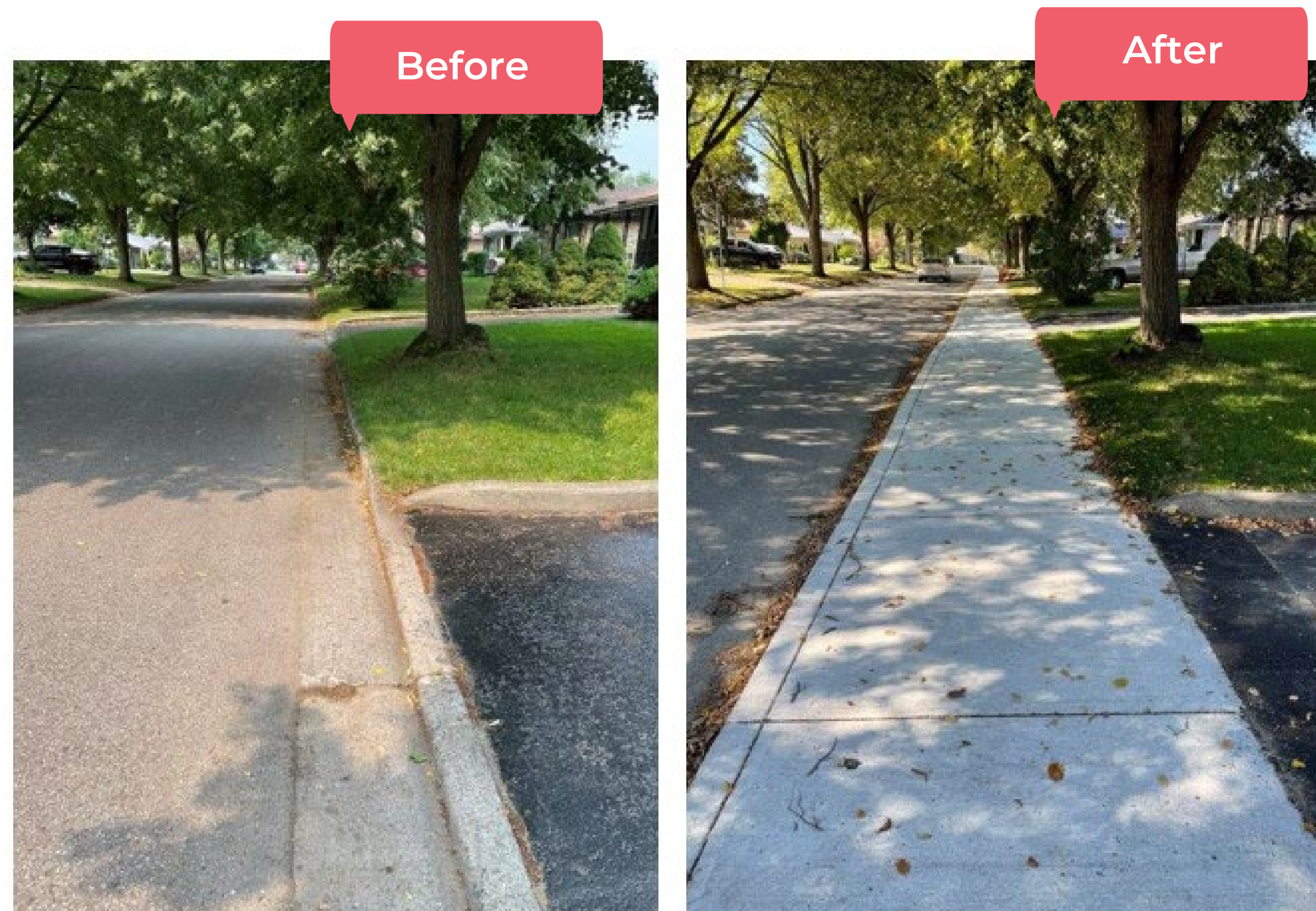
# Sidewalks on Neighbourhood Streets

Gaps on existing neighbourhood streets are being addressed through current infrastructure programs including:

- Neighbourhood Connectivity Plans
- Infrastructure Lifecycle Renewal Program
- Neighbourhood street reconstructions
- New Sidewalk Program and pathway development

## what we heard

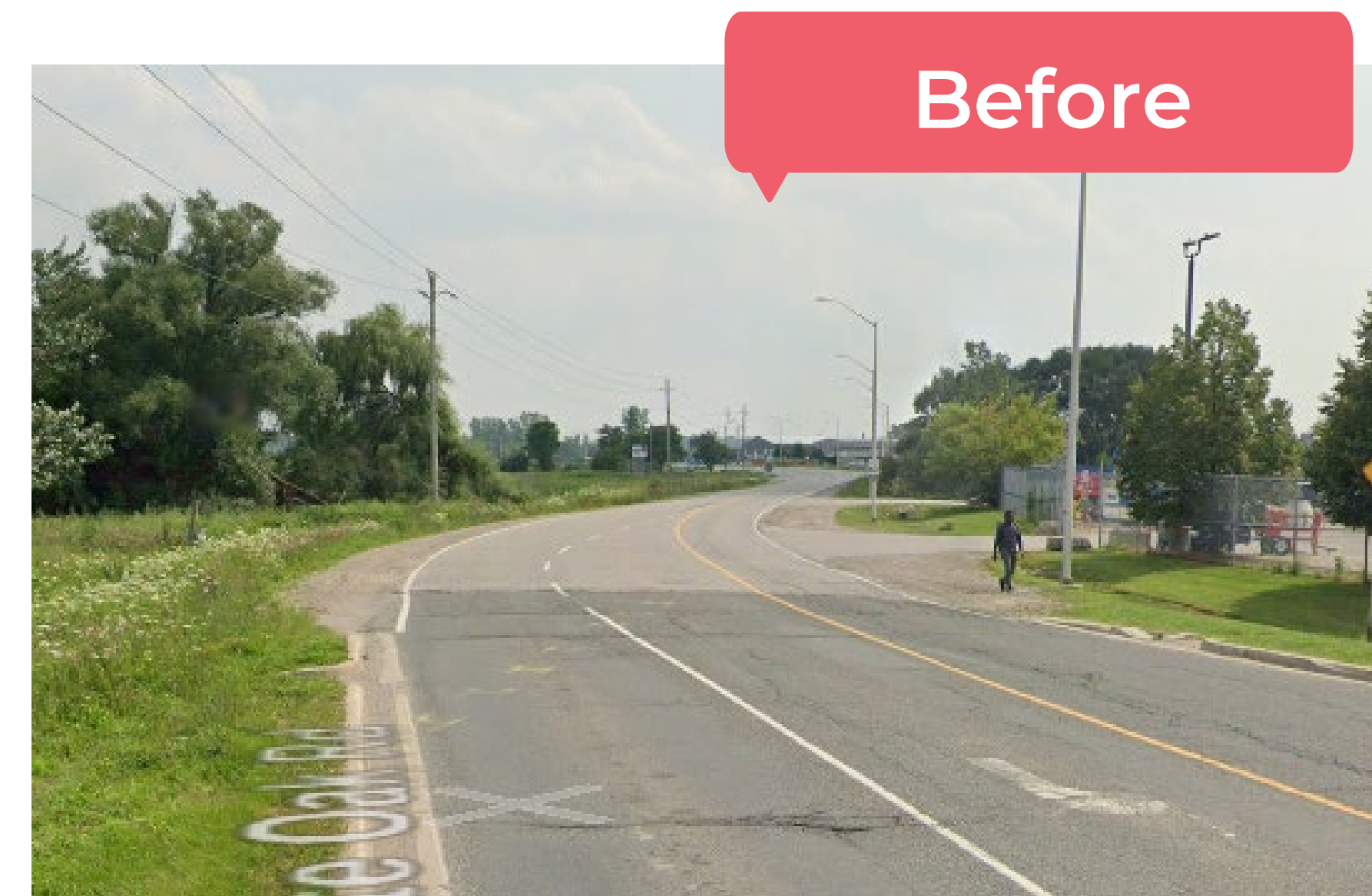
Londoners want to walk, roll, cycle, and take transit more but are discouraged from doing so due to lack of infrastructure.



# Sidewalk Gaps on Major Roads

**!** **Important:** All recommendations are subject to Council approval, further study, funding applications, and public consultation.

The Mobility Master Plan is identifying sidewalk gaps on major roads to be completed where there is demand for walking. Major Roads are typically multi-lane roads that carry larger volumes of traffic. They include Civic Boulevards, Urban Thoroughfares and Rapid Transit Boulevards.



# Sidewalk Gaps on Major Roads Timeline

**!** **Important:** All recommendations are subject to Council approval, further study, funding applications, and public consultation.

The Mobility Master Plan recommendations include **various multi-modal projects which address sidewalk gaps** on major roads. The proposed timeline for those projects are shown on the map.

Timeline for the sidewalk projects shown in purple is to be determined and may be addressed through development on adjacent lands, or through a Mobility Master Plan recommended policy, action or program.



**What should we build first?**

**What do we need to know before implementing?**

# Enhanced Pedestrian Environment Areas

The Mobility Master Plan is recommending an Enhanced Pedestrian Environment Areas Map which can be used as a planning tool to help inform the design and prioritization of future infrastructure projects.



## Examples:



**Important:** All recommendations are subject to council approval, further study, funding applications and public consultation.

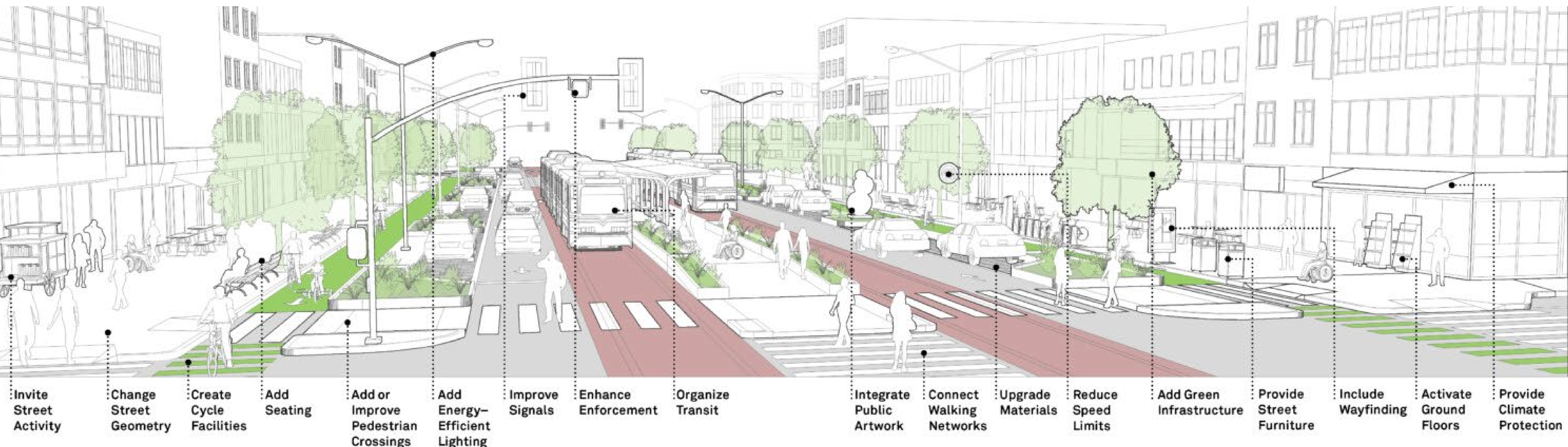
# Enhanced Pedestrian Environments

## Enhanced Pedestrian Environment Areas may include:

- Pedestrian lighting
- Wider sidewalks
- Amenities (benches, shade trees)
- Personal safety measures such as security cameras
- Public art
- Wayfinding
- New river or railway crossings to connect major destinations

## what we heard

Londoners have reported feeling unsafe and experiencing discrimination while on transit and walking at night in areas with limited lighting.





# Examples of Pedestrian Amenities



Shade trees



Seating and benches



Enhanced lighting



Enhanced street crossings

