

**Liability Note**

The Contractor shall verify and be responsible for all dimensions. DO NOT scale the drawing - any errors or omissions shall be reported to Stantec without delay.

**Legend**

- EXISTING CONTOURS
- EXISTING TREE
- EXISTING TREE TO BE REMOVED
- ITEM TO BE REMOVED
- TREE PROTECTION FENCE
- 2m PROTECTION AREA

**UTILITIES**

1. CONTRACTOR TO VERIFY LOCATION OF ALL EXISTING UTILITIES PRIOR TO CONSTRUCTION. CONTRACTOR TO COORDINATE WITH UTILITIES BEFORE ANY THE RELOCATION OR REMOVAL OF ANY EXISTING UTILITIES PRIOR TO CONSTRUCTION.
2. CONTRACTOR TO NOTIFY STANTEC CONSULTING AND CITY OF LONDON 48 HOURS BEFORE COMMENCING CONSTRUCTION WITHIN THE EXISTING ROAD ALLOWANCE.

**REMOVALS**

1. THE CONTRACTOR SHALL REMOVE ALL CONCRETE, ASPHALT, UNUSED AND UNSUITABLE MATERIAL AS REQUIRED AND DISPOSE OF OFFSITE.

SEE GRADING PLAN FOR EROSION AND SEDIMENT CONTROLS. EROSION AND SEDIMENT CONTROLS ARE TO BE INSTALLED PRIOR TO CONSTRUCTION.

FOR NOTES & DETAILS SEE DWG C-5

Revision	By	Appd.	YY.MM.DD
1.0	RWR	DV	24.09.25
2.0	RWR	DV	24.09.25
1.0	RWR	DV	24.07.26

File Name	RWR	DV	RWR	23.10.30
dwg_161414378_CIVIL	Dwn.	Chkd.	Dsgn.	YY.MM.DD

**Permit-Seal**



Client/Project  
SIFTON PROPERTIES LIMITED

4040 Colonel Talbot Road



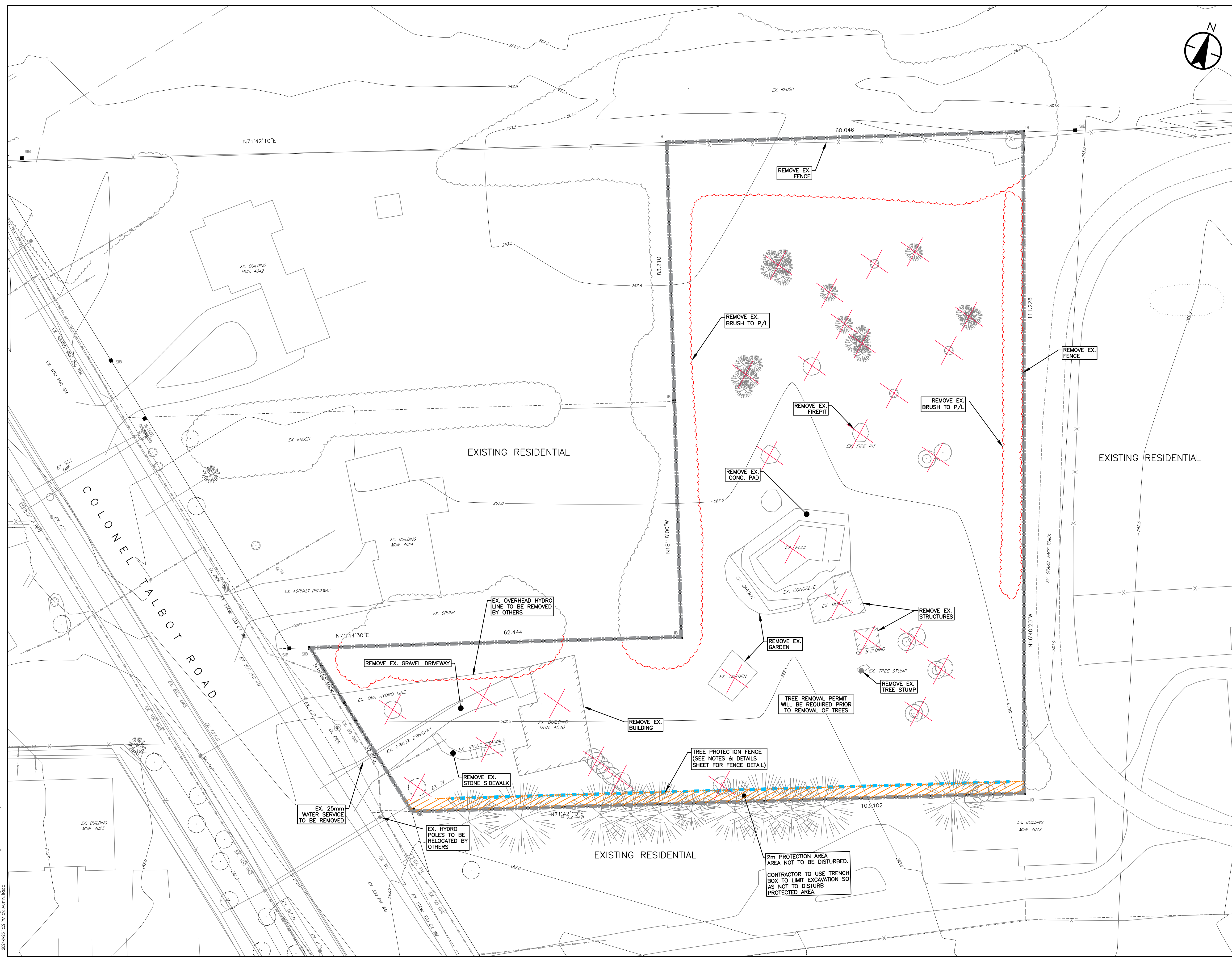
London, ON Canada

**Title**

EXISTING CONDITIONS & REMOVALS PLAN

Project No.	Scale	0	3	9	15m
161414378	1:300				

Drawing No.	Sheet	Revision
C-1	1	1



W:\161414378\design\drawing\civil\sheet\_161414378\_CIVIL.dwg  
2024/09/25 1:32 PM by: Austin Isaac

**Liability Note**

The Contractor shall verify and be responsible for all dimensions. DO NOT scale the drawing - any errors or omissions shall be reported to Stantec without delay.

**Legend**

- SITE BOUNDARY
- PROPOSED WATERMAIN & VALVE
- EX. WATERMAIN
- PROPOSED WATER SERVICE & CURBSTOP
- PROPOSED 3-WAY FIRE HYDRANT C/W STORZ CONNECTION AS PER W-CS-1
- EX. FIRE HYDRANT
- PROPOSED PIPE INSULATION PER W-CS-68
- PROPOSED STORM SEWER
- SUBDRAIN LOCATION
- EXISTING STORM SEWER
- PROPOSED STORM MAINTENANCE HOLE
- PROPOSED CATCHBASIN MAINTENANCE HOLE
- PROPOSED CATCHBASIN
- EXISTING STORM MAINTENANCE HOLE
- PROPOSED SANITARY SEWER
- EXISTING SANITARY SEWER
- SANITARY MAINTENANCE HOLE
- EXISTING SANITARY MAINTENANCE HOLE
- WATER METER
- SL
- SUMP LOCATION
- 2m PROTECTION AREA

FOR SERVICING NOTES & DETAILS SEE SHEET C-5

Revision	By	Appd.	YY.MM.DD
1.0	RWR	DV	24.09.25
2.0	RWR	DV	24.09.25
1.0	RWR	DV	24.07.26

Permit-Seal	RWR	DV	RWR	23.10.30
	Dwn.	Chkd.	Dsgn.	YY.MM.DD



Client/Project  
SIFTON PROPERTIES LIMITED

4040 Colonel Talbot Road  
London, ON Canada

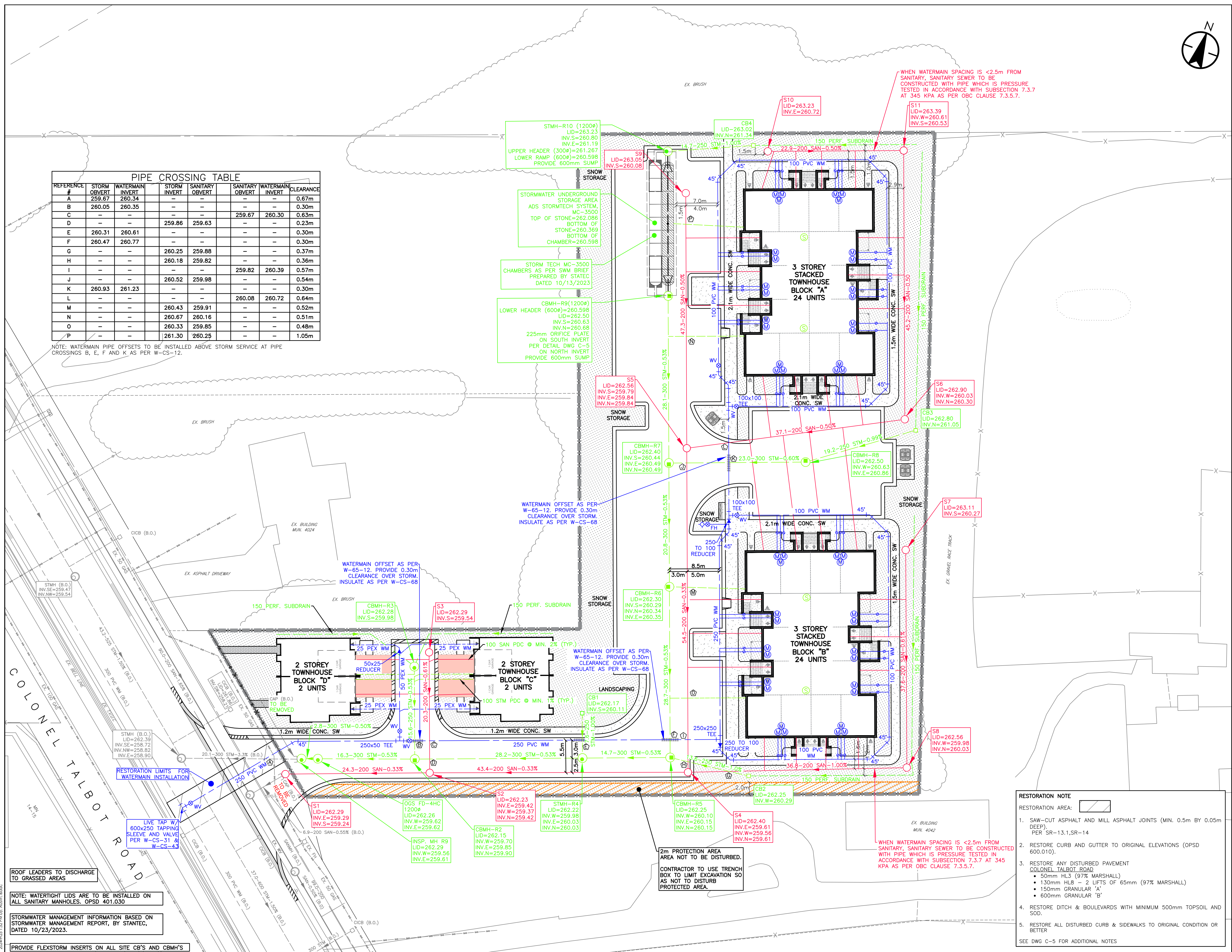


Title  
SERVICING PLAN

Project No. 161414378	Scale 0 3 9 15m 1:300
Drawing No. C-2	Sheet 2
	Revision 1

REFERENCE #	STORM OVERT	WATERMAIN INVERT	STORM INVERT	SANITARY OVERT	SANITARY OVERT	WATERMAIN INVERT	CLEARANCE
A	259.67	260.34	-	-	-	-	0.67m
B	260.05	260.35	-	-	259.67	260.30	0.30m
C	-	-	-	-	-	-	0.63m
D	-	-	259.86	259.63	-	-	0.23m
E	260.31	260.61	-	-	-	-	0.30m
F	260.47	260.77	-	-	-	-	0.30m
G	-	-	260.25	259.88	-	-	0.37m
H	-	-	260.18	259.82	-	-	0.36m
I	-	-	260.52	259.98	-	-	0.54m
J	-	-	-	-	259.82	260.39	0.57m
K	260.93	261.23	-	-	-	-	0.30m
L	-	-	-	-	260.08	260.72	0.64m
M	-	-	260.43	259.91	-	-	0.52m
N	-	-	260.67	260.16	-	-	0.51m
O	-	-	260.33	259.85	-	-	0.48m
P	-	-	261.30	260.25	-	-	1.05m

NOTE: WATERMAIN PIPE OFFSETS TO BE INSTALLED ABOVE STORM SERVICE AT PIPE CROSSINGS B, E, F AND K AS PER W-CS-12.



**RESTORATION NOTE**

RESTORATION AREA: [Symbol]

- SAW-CUT ASPHALT AND MILL ASPHALT JOINTS (MIN. 0.5m BY 0.05m DEEP). PER 'SR'-13.1,SR-14
- RESTORE CURB AND GUTTER TO ORIGINAL ELEVATIONS (OPSD 600.010).
- RESTORE ANY DISTURBED PAVEMENT COLONEL TALBOT ROAD
  - 50mm HL3 (97% MARSHALL)
  - 130mm HL8 - 2 LIFTS OF 65mm (97% MARSHALL)
  - 150mm GRANULAR 'A'
  - 600mm GRANULAR 'B'
- RESTORE DITCH & BOULEVARDS WITH MINIMUM 500mm TOPSOIL AND SOD.
- RESTORE ALL DISTURBED CURB & SIDEWALKS TO ORIGINAL CONDITION OR BETTER

SEE DWG C-5 FOR ADDITIONAL NOTES

N:\161414378\Design\Drawings\Civil\Site\161414378\_Civil.dwg  
 2024/09/25 10:29:29 AM  
 ORIGINAL SHEET - ANSI D

**NEW ASPHALT AREA MAKE-UP**

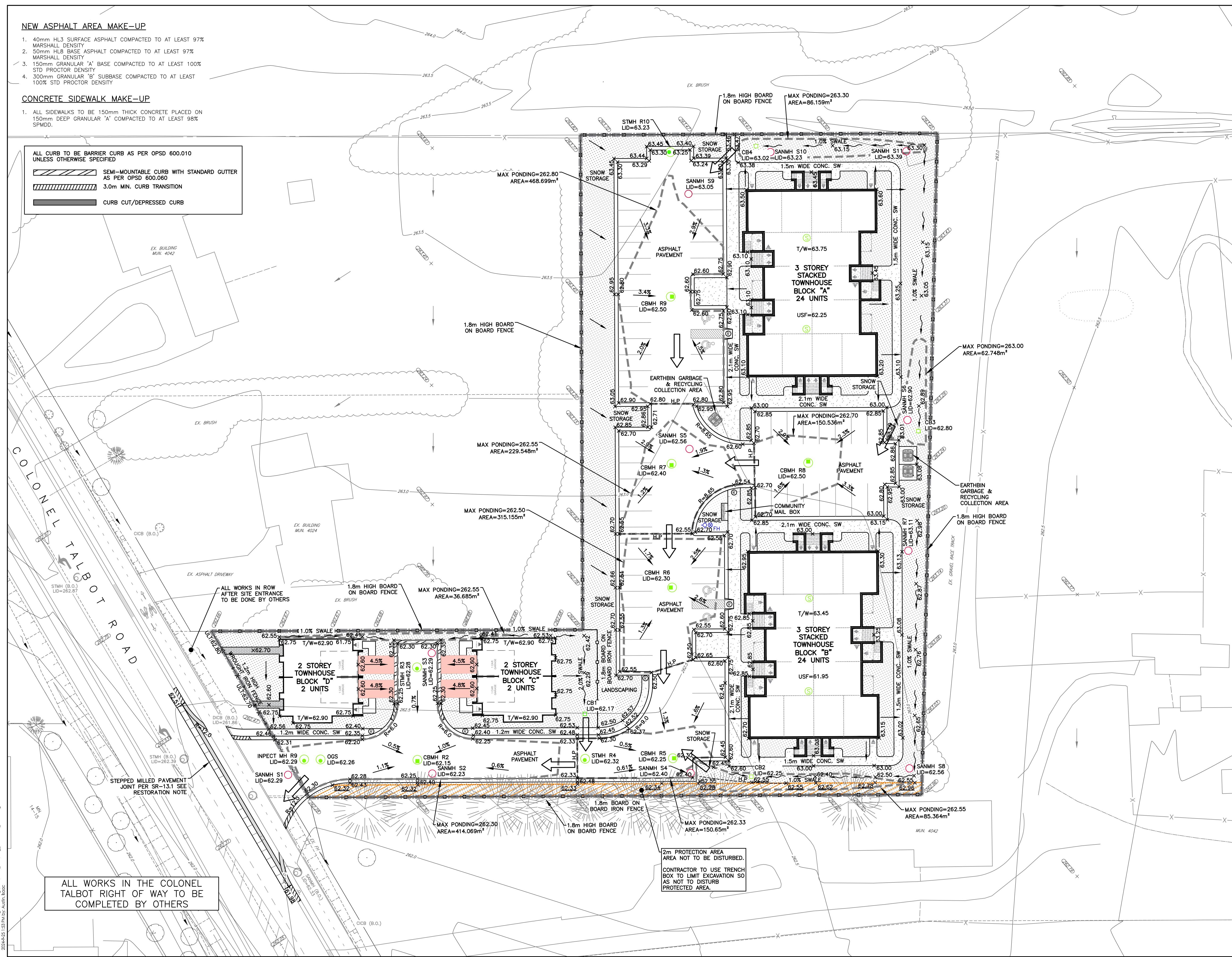
- 40mm HL3 SURFACE ASPHALT COMPACTED TO AT LEAST 97% MARSHALL DENSITY
- 50mm HL6 BASE ASPHALT COMPACTED TO AT LEAST 97% MARSHALL DENSITY
- 150mm GRANULAR 'A' BASE COMPACTED TO AT LEAST 100% STD PROCTOR DENSITY
- 300mm GRANULAR 'B' SUBBASE COMPACTED TO AT LEAST 100% STD PROCTOR DENSITY

**CONCRETE SIDEWALK MAKE-UP**

- ALL SIDEWALKS TO BE 150mm THICK CONCRETE PLACED ON 150mm DEEP GRANULAR 'A' COMPACTED TO AT LEAST 98% SPMD.

ALL CURB TO BE BARRIER CURB AS PER OPSD 600.010 UNLESS OTHERWISE SPECIFIED

- SEMI-MOUNTABLE CURB WITH STANDARD GUTTER AS PER OPSD 600.060
- 3.0m MIN. CURB TRANSITION
- CURB CUT/DEPRESSED CURB



Stantec  
400-1305 Riverbend Road  
London ON N6K 0J5  
Tel. 519-645-2007  
www.stantec.com

**Liability Note**

The Contractor shall verify and be responsible for all dimensions. DO NOT scale the drawing - any errors or omissions shall be reported to Stantec without delay.

**Legend**

- SITE LIMIT
- EXISTING ELEVATION
- PROPOSED ELEVATION (ADD 200 FOR GEODETIC ELEVATION)
- ELEVATION MATCH TO EXISTING GROUND (ADD 200 FOR GEODETIC ELEVATION)
- DENOTES SIDEWALK RAMP PER CITY OF LONDON SPECIFICATION SR-1.2 c/w TACTILE PLATES AS PER CoL SPECIFICATION 2.1.15
- EXISTING FLOW DIRECTION
- FLOW DIRECTION
- EXISTING DRAINAGE SWALE
- EXISTING CONTOUR
- STORM MANHOLE
- CATCHBASIN MANHOLE
- CATCHBASIN
- SANITARY MANHOLE
- HYDRANT
- LIGHT STANDARD
- OVERLAND FLOW DIRECTION
- 2m PROTECTION AREA
- TREE PROTECTION FENCE

FOR GRADING NOTES & DETAILS SEE SHEET C-5

Revision	By	Appd.	YY.MM.DD
1.0 REVISED FOR SPA	RWR	DV	24.09.25
2.0 ISSUED FOR SPA	RWR	DV	24.09.25
1.0 ISSUED FOR SPA PRE-CONSULTATION	RWR	DV	24.07.26

File Name	RWR	DV	RWR	23.10.30
dwg_161414378_CIVIL	Dwn.	Chkd.	Dsgn.	YY.MM.DD

**Permit-Seal**



Client/Project  
SIFTON PROPERTIES LIMITED

4040 Colonel Talbot Road



London, ON Canada

Title

GRADING PLAN

Project No. 161414378 Scale 1:300

Drawing No. Sheet 3 Revision 1

W:\161414378\dwg\161414378\_CIVIL.dwg 2024/09/25 1:33 PM by: Austin Isaac

ALL WORKS IN THE COLONEL TALBOT RIGHT OF WAY TO BE COMPLETED BY OTHERS

2m PROTECTION AREA AREA NOT TO BE DISTURBED. CONTRACTOR TO USE TRENCH BOX TO LIMIT EXCAVATION SO AS NOT TO DISTURB PROTECTED AREA.

**Liability Note**

The Contractor shall verify and be responsible for all dimensions. DO NOT scale the drawing - any errors or omissions shall be reported to Stantec without delay.

**Legend**

- SILT SACKS AND FILTERX INLET PROTECTION ON HARD SURFACES  
STRAW BALES FILTERS ON GRASSED AREAS  
(REFER TO DETAILS ON SHEET 3)
- INLET PROTECTION  
(REFER TO DETAIL ON SHEET 3)
- HEAVY DUTY SILT FENCE AS PER OPSD 219.130
- 2m PROTECTION AREA
- TREE PROTECTION FENCE

**FOR SERVICING NOTES & DETAILS  
SEE SHEET C-5**

Revision	By	Appd.	YY.MM.DD
1.0	RWR	DV	24.09.25
2.0	RWR	DV	24.09.25
1.0	RWR	DV	24.07.26

File Name	RWR	DV	RWR	23.10.30
	Dwn.	Chkd.	Dsgn.	YY.MM.DD
File Name: dwg_161414378_CIVIL				

**Permit-Seal**



Client/Project  
SIFTON PROPERTIES LIMITED

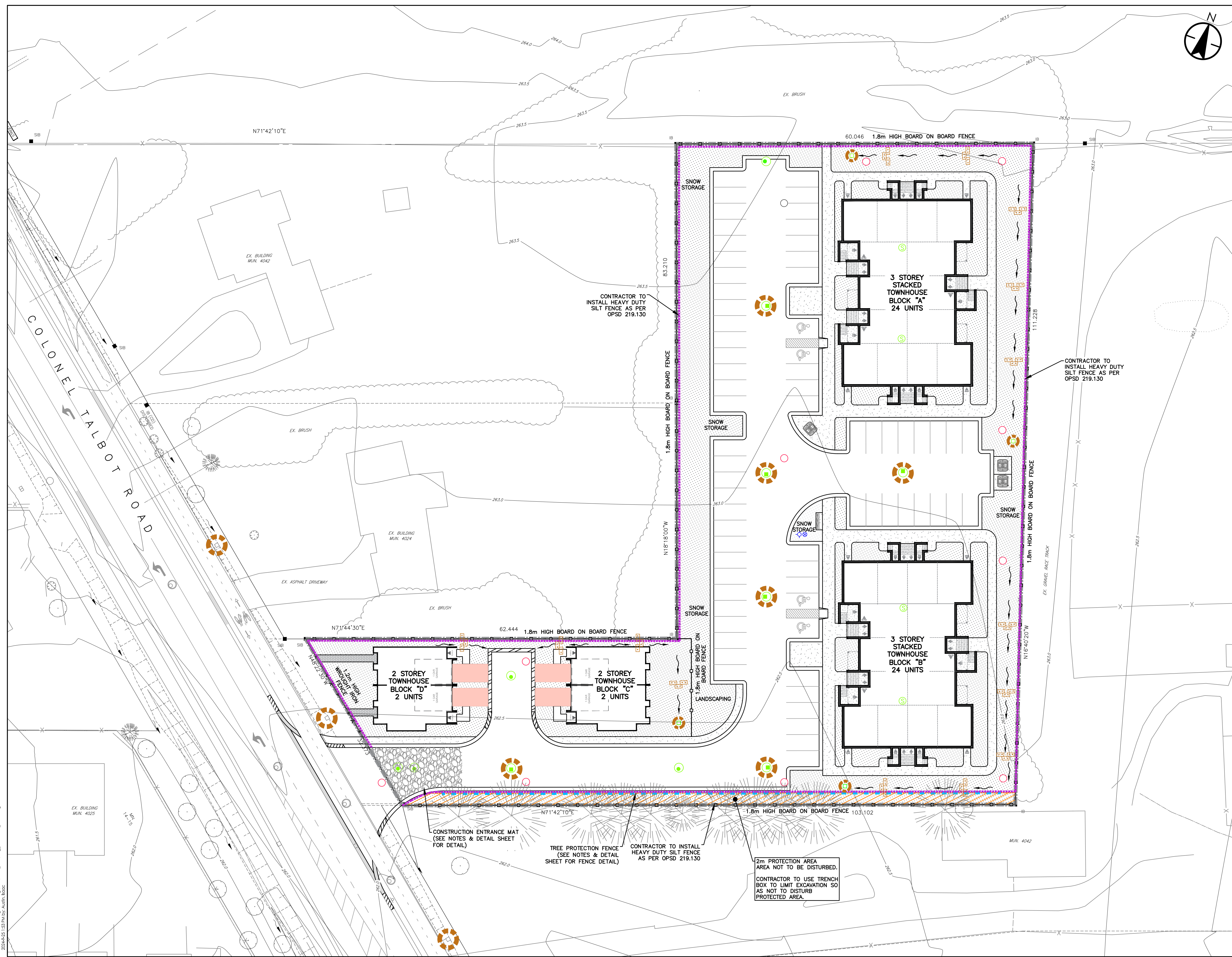
4040 Colonel Talbot Road



London, ON Canada

Title  
EROSION & SEDIMENT  
CONTROL PLAN

Project No. 161414378	Scale 1:300	0 3 9 15m
Drawing No. Sheet	4	Revision 1



W:\161414378\design\dwg\civil\sheet\_161414378\_CIVIL.dwg  
 2024/09/25 1:33 PM by: Austin Isaac

**Liability Note**

The Contractor shall verify and be responsible for all dimensions. DO NOT scale the drawing - any errors or omissions shall be reported to Stantec without delay.

**SEDIMENT CONTROL MEASURES**

- PROTECT ALL EXPOSED SURFACES AND CONTROL ALL RUNOFF DURING CONSTRUCTION AND REMAIN IN PLACE UNTIL RESTORATION IS COMPLETE
- MAINTAIN EROSION CONTROL MEASURES DURING CONSTRUCTION
- ALL COLLECTED SEDIMENT TO BE DISPOSED OF AT AN APPROVED LOCATION
- ALL DEWATERING TO BE DISPOSED OF IN AN APPROVED SEDIMENTATION BASIN
- PROTECT ALL CATCHBASINS, MANHOLES AND PIPE ENDS FROM SEDIMENT INTRUSION WITH GEOTEXTILE (TERRAFIX 270R OR APPROVED EQUIVALENT)
- KEEP ALL SUMPS CLEAN DURING CONSTRUCTION
- PREVENT WIND-BLOWN DUST
- FENCE OFF BIO-RETENTION AREAS USING LIGHT DUTY SILT FENCE.
- IF POSSIBLE, HAVE STORMWATER BYPASS THE PROPOSED BIO-RETENTION AREAS DURING CONSTRUCTION.
- DO NOT PLACE SEDIMENT CONTROL TRAPS IN BIO-RETENTION AREAS. ONLY IF ABSOLUTELY NECESSARY, BUILD SEDIMENT TRAPS OVER INFILTRATION AREAS. PROTECTING THE INFILTRATION AREAS EITHER WITH A COVER OF PLASTIC, SAND, OR OTHER MECHANISM THAT CAN BE REMOVED OR BY REMEDIATING THE SOILS BY REMOVING THE TOP 0.3 M OF SOIL AND SCARIFYING THE SURFACE TO ENSURE OPEN SOIL PORES.
- STABILIZE ALL DISTURBED AREAS WHERE WORK WILL NOT TAKE PLACE FOR A PERIOD OF 30 DAYS OR MORE ACCORDING TO OPS 572.
- PERFORM STREET SWEEPING OF ADJACENT ROADWAYS AS NECESSARY TO REMOVE SOIL ACCUMULATION CAUSED BY CONSTRUCTION TRAFFIC.
- DEWATERING EFFLUENT DISCHARGE AREAS COMPLETE WITH SEDIMENT TRAPS AND ENERGY DIFFUSERS SHALL BE CONSTRUCTED, AS NECESSARY, WITHIN THE PROPOSED CONSTRUCTION LIMITS. FILTER SOCKS WILL BE USED WHERE NECESSARY TO FURTHER FILTER THE DISCHARGE.
- INSTALL AND MAINTAIN STRAW BALE FILTERS AT DRIVEWAY CATCHBASINS TO PREVENT SEDIMENT FROM ENTERING THE PROPOSED STORM SEWER.
- STRAW BALES TO BE USED IN LOCALIZED AREAS AS SHOWN AND AS DIRECTED BY THE ENGINEER DURING CONSTRUCTION
- STRAWBALES TO BE TERMINATED BY ROUNDING BALES TO CONTAIN AND FILTER RUNOFF.
- ALL SILT FENCING AND DETAILS ARE AT THE MINIMUM TO BE CONSTRUCTED IN ACCORDANCE WITH THE MINISTRY OF NATURAL RESOURCES GUIDELINES ON EROSION AND SEDIMENT CONTROL FOR URBAN CONSTRUCTION SITES.
- ALL OF THE ABOVE NOTES AND ANY SEDIMENT & EROSION CONTROL MEASURES ARE AT THE MINIMUM TO BE IN ACCORDANCE WITH THE MINISTRY OF NATURAL RESOURCES GUIDELINES ON EROSION AND SEDIMENT CONTROL FOR URBAN CONSTRUCTION SITES.

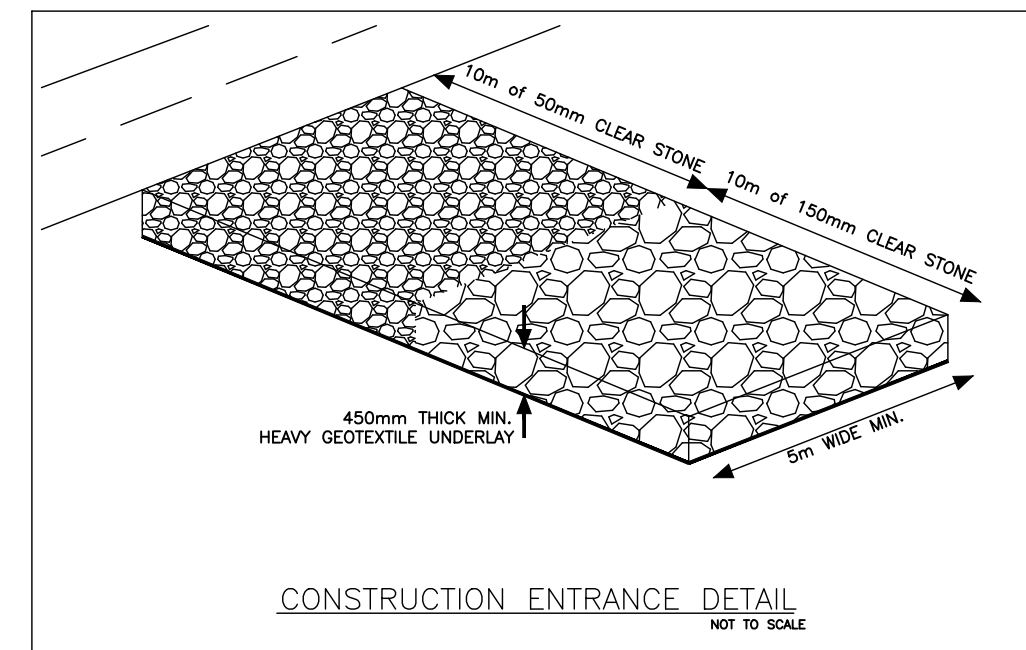
**WATERMAIN NOTES**

- ALL WATERMAIN PIPE UP TO AND INCLUDING 300mm DIA. TO BE POLYVINYL CHLORIDE (PVC) C900, CLASS 150 DR18.
- ALL WATERMAIN TO HAVE 1.7m TO 1.9m COVER.
- WHERE COVER TO WATER SERVICES IS LESS THAN 1.5m, THE SERVICE SHALL BE ADEQUATELY INSULATED OVER THE AFFECTED LENGTH OF SERVICE AS PER CITY DWG. NO. W-CS-68.
- ALL WATERMAIN MATERIAL AND CONSTRUCTION SHALL CONFORM TO THE CURRENT CITY OF LONDON STANDARDS FOR SEWER AND WATER.
- MECHANICAL RESTRAINT JOINTS TO BE USED AT ALL TEES AND BENDS, FITTINGS, HYDRANTS, VALVES, CROSSES, REDUCERS, PLUGS AND/OR CAPS.
- ALL FIRE HYDRANTS SHALL BE 3-WAY HYDRANTS WITH STORZ CONNECTION OPENING CLOCKWISE.
- ALL WATERMAIN VALVES SHALL BE GATE VALVES MANUFACTURED TO AWWA C-500. ALL VALVES TO OPEN CLOCKWISE.
- INSTALLATION, HYDROSTATIC TESTING, SWABBING, FLUSHING AND DISINFECTION SHALL BE DONE IN ACCORDANCE WITH THE CITY OF LONDON GENERAL SPECIFICATIONS FOR WATER DISTRIBUTION SYSTEMS.
- WATER SERVICES FOR UNITS 1-4 SHALL BE 25mm DIA. PEX WATER SERVICES INCLUDING MAIN STOP, CURB STOP AND ANODES. WATER SERVICES FOR BLOCK A AND B SHALL BE 100mm DIA. PVC
- CURB STOPS TO BE INSTALLED AS PER W-CS-6

**NOTES TO CONTRACTOR**

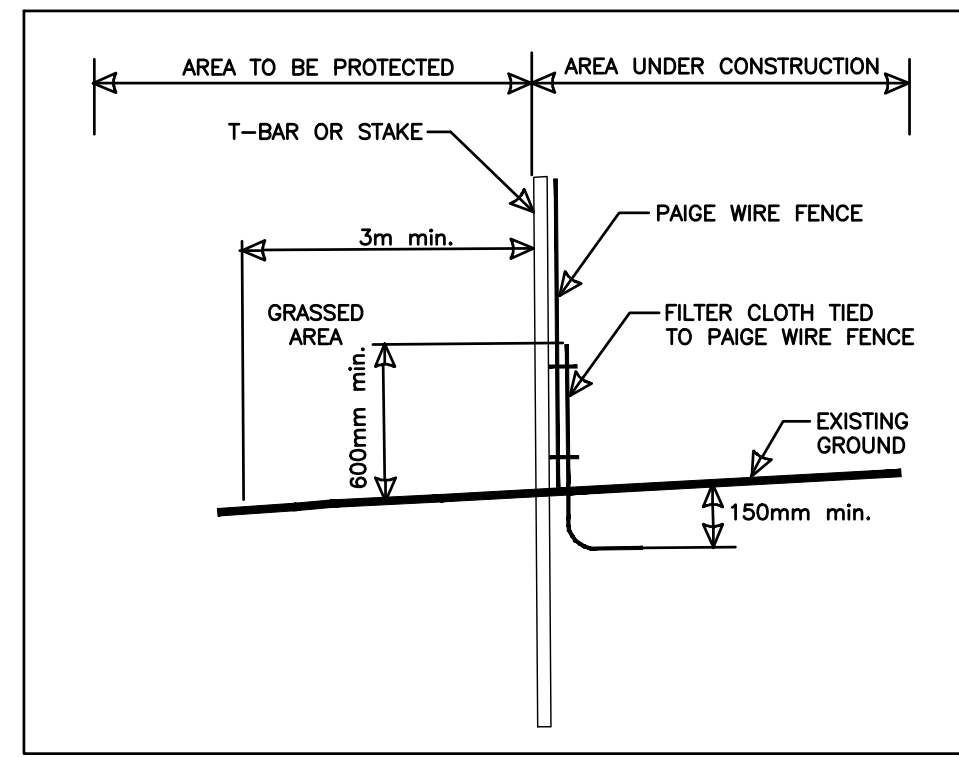
- CONTRACTOR TO VERIFY LOCATION OF ALL EXISTING UTILITIES PRIOR TO CONSTRUCTION.
- CONTRACTOR TO NOTIFY STANTEC CONSULTING AND THE CITY OF LONDON 48 HOURS BEFORE COMMENCING CONSTRUCTION WITHIN THE EXISTING ROAD ALLOWANCE.
- WITHIN THE LIMITS OF THE EXISTING ROAD ALLOWANCE, THE CONTRACTOR SHALL REMOVE ALL CONCRETE ASPHALT, UNUSED AND UNSUITABLE MATERIAL AS REQUIRED AND DISPOSE OFFSITE.
- ON EXCAVATIONS IN WHICH EXISTING CURBS ARE AFFECTED, GRANULAR FILL SHALL EXTEND 300mm BEHIND BACK OF CURBS AS PART OF RESTORATION.
- ALL MANHOLES ARE TO BE SET AT BASE ASPHALT ELEVATION.
- ALL DRAINAGE FROM ADJUTING LANDS MUST NOT BE ADVERSELY AFFECTED DURING OR AFTER CONSTRUCTION.
- THE CONTRACTOR SHALL CONTROL ALL SEDIMENT FROM LEAVING THE SITE TO THE SATISFACTION OF THE ENGINEER.
- THE ACCURACY OF THE SURFACE AND SUBSURFACE DETAILS SHOWN ON THE DRAWINGS ARE NOT GUARANTEED. THE CONTRACTOR SHALL INVESTIGATE AND VERIFY FOR HIMSELF WHETHER THE INFORMATION IS CORRECT AND COMPLETE.

STORMWATER MANAGEMENT INFORMATION BASED ON STORMWATER MANAGEMENT REPORT, BY STANTEC, DATED OCTOBER 23th 2023.

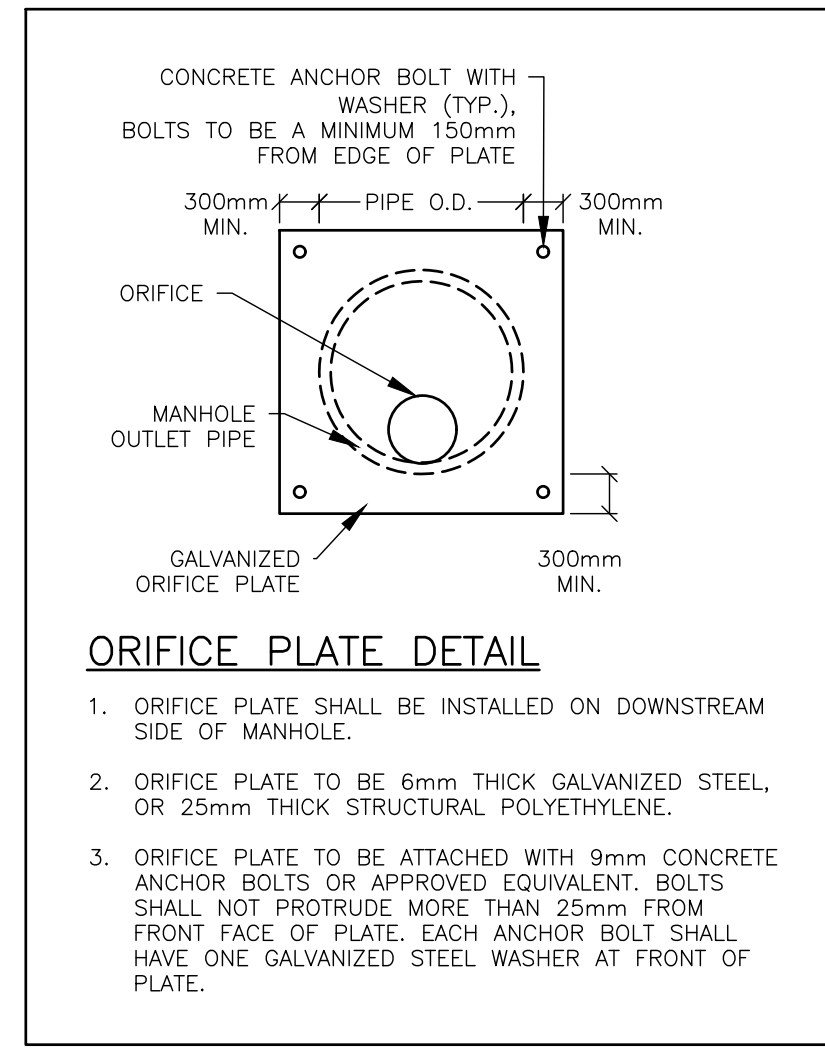


**CONTINGENCY MEASURES IN CASE OF FAILURE:**

- ANY UNEXPECTED DISCHARGE OF SEDIMENT OR OTHER DELETERIOUS SUBSTANCE TO THE WATERCOURSE SHALL BE REPORTED TO STANTEC CONSULTING, THE CITY AND THE MOE WITHIN A PERIOD OF 2 HOURS OR AS SOON AS POSSIBLE DURING OBSCURE TIMES OR SITUATIONS.
- THE DEVELOPER WILL CEASE ALL CONSTRUCTION RELATED WORK AND FOCUS ON EROSION AND SEDIMENT CONTROL REPAIRS AS REQUIRED TO EFFECTIVELY STABILIZE THE SITE WHERE FAILURE HAS OCCURRED OR IS IMMINENT.
- IF LONG TERM DAMAGE TO FISH HABITAT OR PROPERTY HAS OCCURRED DUE TO FAILURE OF THIS PLAN TO CONTROL SEDIMENT, A RESTORATION PLAN WILL BE DEVELOPED BY THE PROPONENT, IN CONSULTATION AND WITH APPROVAL FROM THE UTRCA AND DFO FOR IMPLEMENTATION BY THE PROPONENT.
- THE WORK SHALL BE COMPLETED TO THE SATISFACTION OF THE CONTRACT ADMINISTRATOR AND THOSE REGULATORY AGENCIES THAT HAVE BEEN CONSULTED.

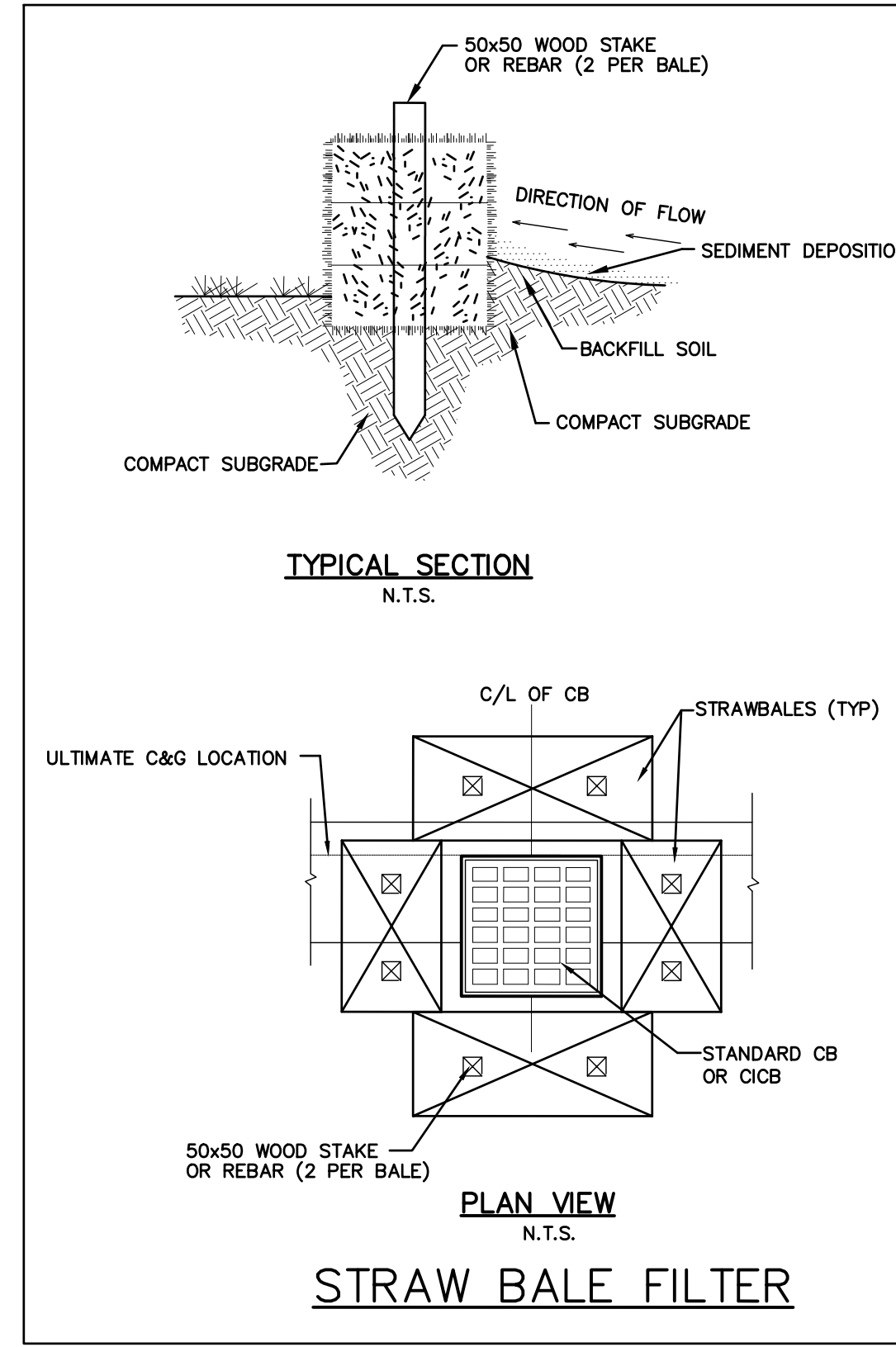


DETAIL OF HEAVY DUTY SILT FENCE



**ORIFICE PLATE DETAIL**

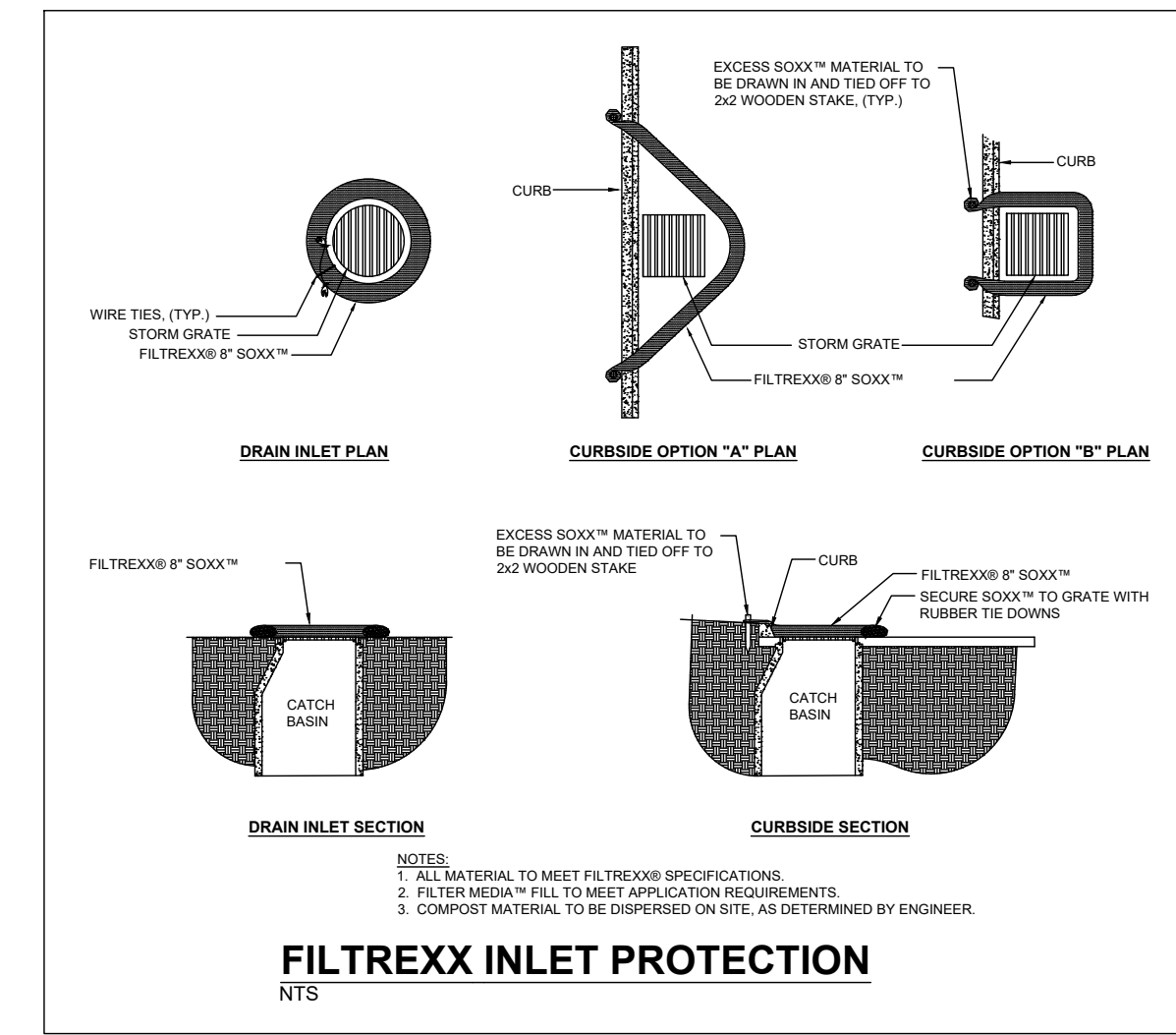
- ORIFICE PLATE SHALL BE INSTALLED ON DOWNSTREAM SIDE OF MANHOLE.
- ORIFICE PLATE TO BE 6mm THICK GALVANIZED STEEL OR 25mm THICK STRUCTURAL POLYETHYLENE.
- ORIFICE PLATE TO BE ATTACHED WITH 9mm CONCRETE ANCHOR BOLTS OR APPROVED EQUIVALENT. BOLTS SHALL NOT PROTRUDE MORE THAN 25mm FROM FRONT FACE OF PLATE. EACH ANCHOR BOLT SHALL HAVE ONE GALVANIZED STEEL WASHER AT FRONT OF PLATE.



**TYPICAL SECTION N.T.S.**

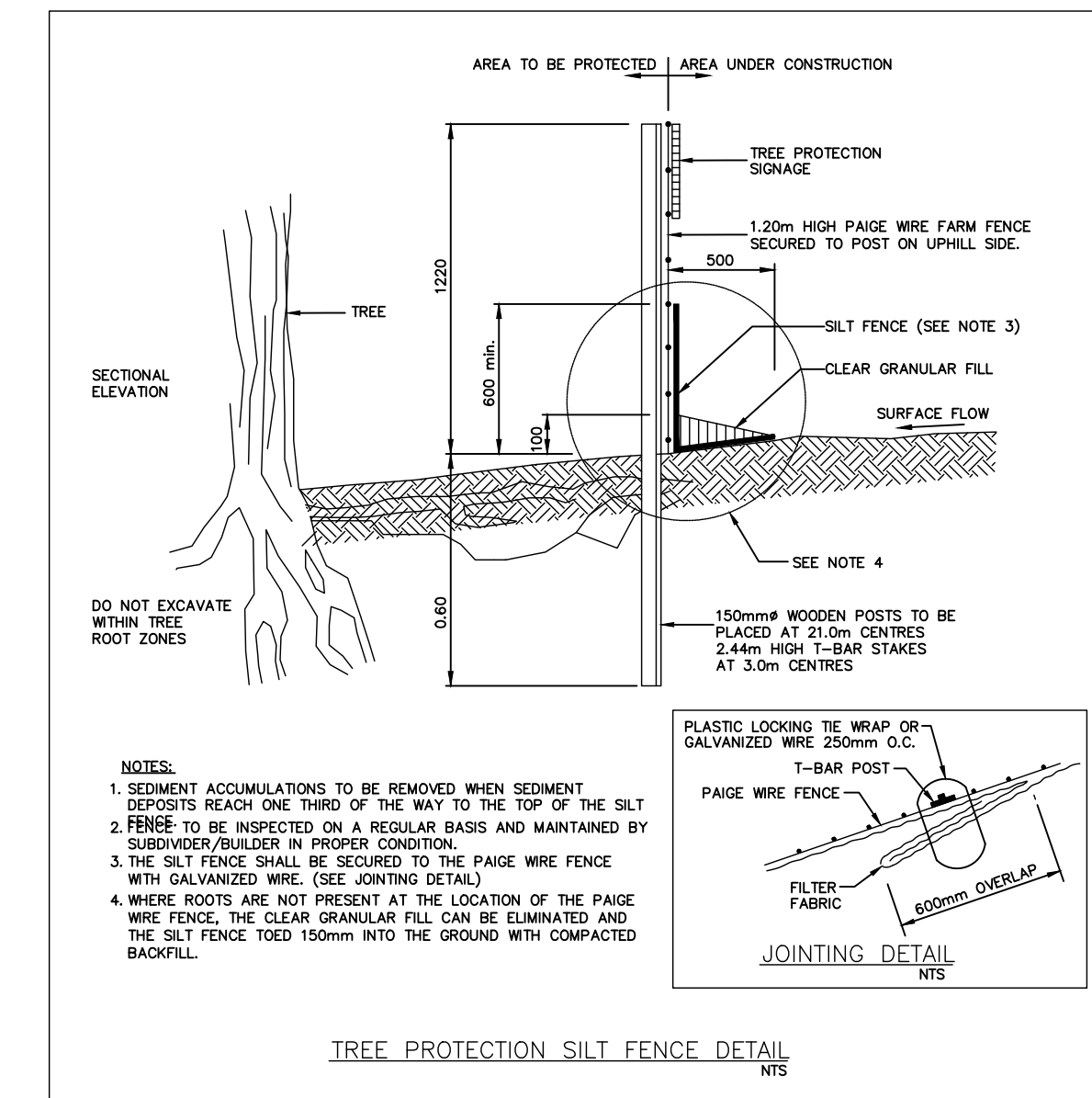
**PLAN VIEW N.T.S.**

**STRAW BALE FILTER**

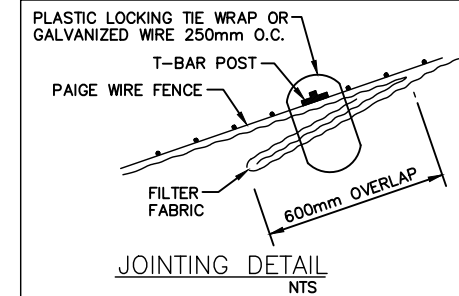


**FILTRIXX INLET PROTECTION NTS**

- NOTES:
- ALL MATERIAL TO MEET FILTRIXX SPECIFICATIONS
  - FILTER MEDIA FILL TO MEET APPLICATION REQUIREMENTS.
  - COMPOST MATERIAL TO BE DISPERSED ON SITE, AS DETERMINED BY ENGINEER.



- NOTES:
- SEDIMENT ACCUMULATIONS TO BE REMOVED WHEN SEDIMENT DEPOSITS REACH ONE THIRD OF THE WAY TO THE TOP OF THE SILT FENCE TO BE INSPECTED ON A REGULAR BASIS AND MAINTAINED BY SUBCONTRACTOR/BUILDER IN PROPER CONDITION.
  - THE SILT FENCE SHALL BE SECURED TO THE PAIGE WIRE FENCE WITH GALVANIZED WIRE. (SEE JOINTING DETAIL)
  - WHERE ROOTS ARE NOT PRESENT AT THE LOCATION OF THE PAIGE WIRE FENCE, THE CLEAR GRANULAR FILL CAN BE ELIMINATED AND THE SILT FENCE TOED 150mm INTO THE GROUND WITH COMPACTED BACKFILL.



TREE PROTECTION SILT FENCE DETAIL NTS

**SEWER NOTES**

- ALL SEWER INSTALLATION SHALL BE IN ACCORDANCE TO CURRENT CITY OF LONDON STANDARDS AND SPECIFICATIONS AND THE PLUMBING CODE.
- ALL 100mm OR 150mm DIAMETER SEWER SERVICE CONNECTIONS SHALL BE PVC SDR-28. ALL SEWER PIPE GREATER THAN 150mm IS TO BE PVC SDR-35. CONCRETE PIPE MAY BE USED FOR SEWER PIPE OF DIAMETER 450mm OR GREATER.
- ALL PVC SEWERS WITH DEPTHS UP TO 4.5m TO USE TYPE 1 BEDDING. SEWERS WITH DEPTHS EXCEEDING 4.5m TO USE TYPE 2 BEDDING, UNLESS OTHERWISE SPECIFIED.
- ALL MAINTENANCE HOLES TO BE PRECAST CONCRETE WITH FRAME & COVER UNLESS OTHERWISE NOTED. MAXIMUM DISTANCE BETWEEN FINISHED GRADE AND FIRST LADDER RUNG TO BE 600mm.
- REMOVE ALL TRENCH WATER WHEN PIPE LAYING IS IN PROGRESS.
- PULL THE "PIG" THROUGH THE P.V.C. SEWERS IN THE PRESENCE OF THE ENGINEER.
- ALL SERVICES SHALL BE INSTALLED TO 1.5m OUTSIDE BUILDING WALL.
- THE MINIMUM DEPTH OF A STORM SEWER SHALL BE 0.5m FROM THE FINISHED GROUND ELEVATION TO THE OVERTOP OF THE PIPE, WHERE MINIMUM DEPTHS CANNOT BE ACHIEVED AND THEREFORE FROST PROTECTION IS WARRANTED, INSULATION IS REQUIRED AS PER CITY OF LONDON W-CS-68.

**CONTINGENCY PLAN**

THE PURPOSE OF THE CONTINGENCY PLAN IS TO MINIMIZE THE RISK OR CONSEQUENCE OF FAILURE OF THE EROSION AND SEDIMENT CONTROL WORKS. THE DEVELOPER SHALL BE RESPONSIBLE FOR FOLLOWING THE CONTINGENCY PLAN, AND WILL PREPARE THE FOLLOWING ITEMS:

- AN EMERGENCY CONTACT LIST FOR EMERGENCY SITUATIONS, INCLUDING STANTEC CONSULTING, CITY OF LONDON, AND MOE.
- WORKERS SHALL BE ON CALL FOR EMERGENCY SITUATIONS FOR CONSTRUCTION OF EMERGENCY SEDIMENT AND EROSION CONTROL MEASURES. ANY ASSOCIATED HEALTH AND SAFETY ISSUES ARE THE RESPONSIBILITY OF THE DEVELOPER.
- HEAVY DUTY SILT FENCE, STRAW BALES AND STAKES, SANDBAGS, APPROPRIATE SIZED RIP-RAP, AND CLEAN GRAVEL FILL SHALL BE AVAILABLE FOR EMERGENCY INSTALLATION.
- GAS POWERED PUMPS, APPROPRIATE SIZED HOSES, FILTRATION SOCKS, AND FILTERCLOTH SHALL BE AVAILABLE FOR EMERGENCY DEWATERING.
- HEAVY EQUIPMENT SHALL BE ON STANDBY FOR EMERGENCY WORKS.
- FUEL SPILL EQUIPMENT SHALL BE AVAILABLE FOR EMERGENCY SPILLS OF DELETERIOUS SUBSTANCES.
- A CONTACT LIST FOR ANY FURTHER REQUIRED EQUIPMENT OR MATERIALS SHALL BE PREPARED AND MADE AVAILABLE FOR EMERGENCY USE.

IF UNFORESEEN EVENTS CAUSE THE STRATEGIES SET OUT IN THE CONTINGENCY PLAN TO BE INSUFFICIENT OR INAPPROPRIATE TO MEET THE OBJECTIVE, THE DEVELOPER, EITHER INDEPENDENTLY OR AS DIRECTED BY THE CONTRACT ADMINISTRATOR, WILL RESPOND IN A TIMELY MANNER WITH ALL REASONABLE MEASURES CONSISTENT WITH SAFETY, TO PREVENT, COUNTERACT OR REMEDY ANY EFFECTS ON FISH OR FISH HABITAT, AND HUMAN INTEREST (I.E., SAFETY, PROPERTY VALUE).

**INSPECTING AND REPORTING**

IN ORDER TO MONITOR THE EFFECTIVENESS OF THE EROSION AND SEDIMENT CONTROL MEASURES DURING CONSTRUCTION, FREQUENT INSPECTIONS WILL BE REQUIRED. THE INSPECTION ACTIVITIES WILL INCLUDE THE FOLLOWING TASKS:

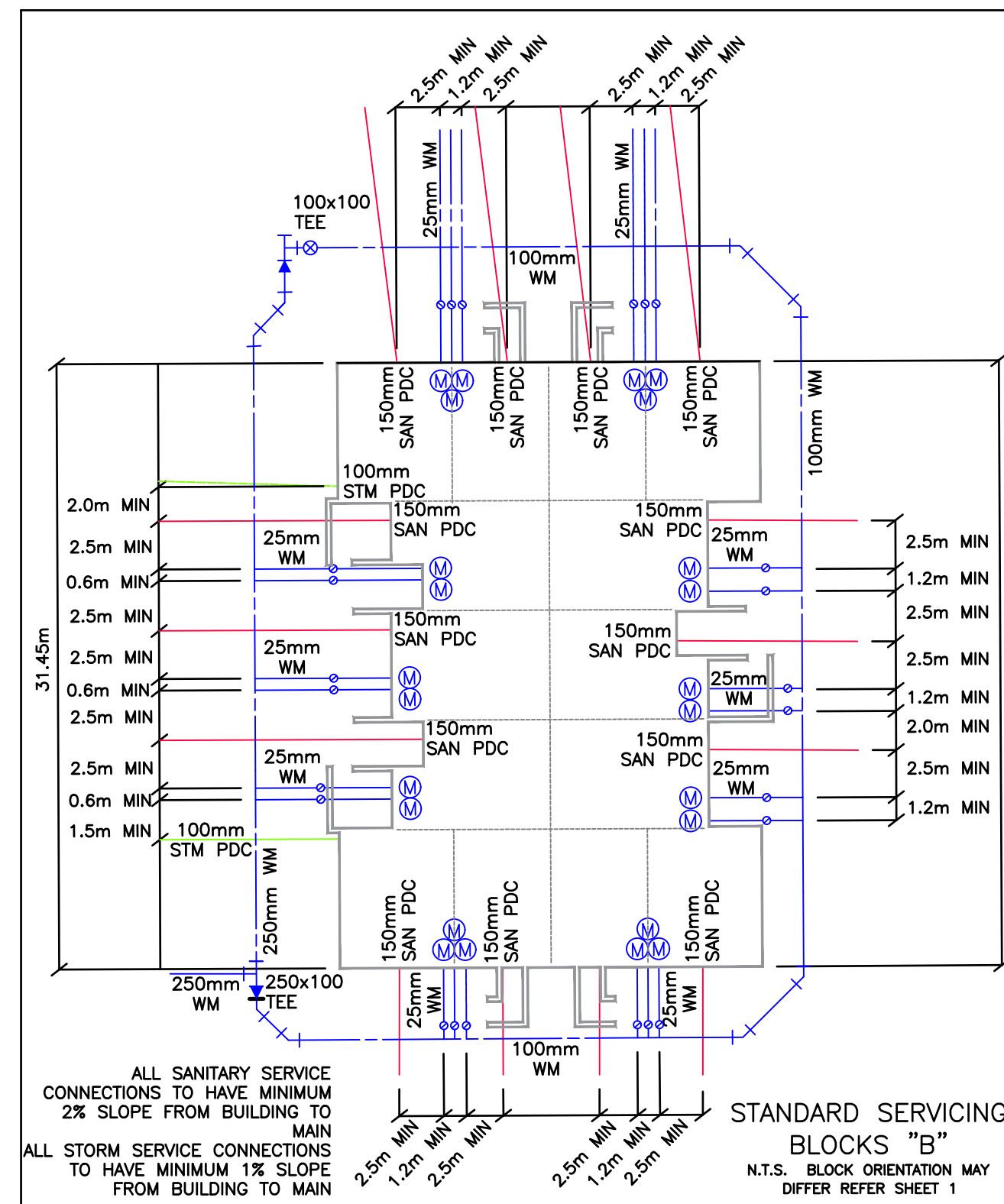
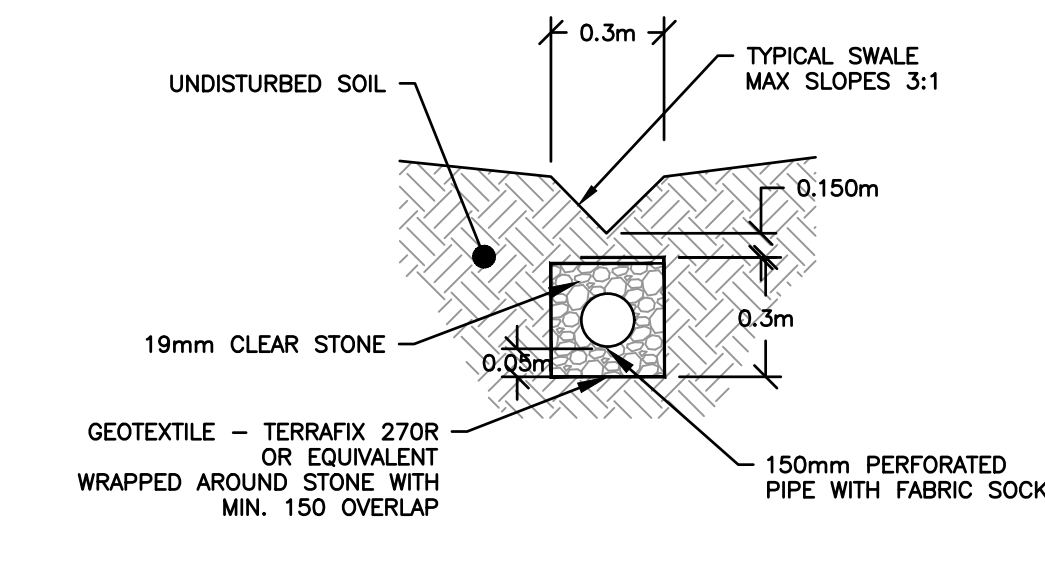
- THE DEVELOPER SHALL MONITOR WEATHER REPORTS ON A DAILY BASIS, AND THE CONTRACT ADMINISTRATOR SHALL RECORD DAILY TEMPERATURES AND RAINFALL.
- THE DEVELOPER SHALL INSPECT THE EROSION CONTROL WORKS ON ALL DAYS WHEN CONSTRUCTION IS ACTIVE.
- THE CONTRACT ADMINISTRATOR AND THE DEVELOPER SHALL INSPECT THE EROSION CONTROL WORKS FOLLOWING PERIODS OF EXCESSIVE PRECIPITATION (I.E. RAINFALL DEPTHS EXCEED 20 MILLIMETRES). THE DEVELOPER WILL CORRECT ANY DEFICIENCIES WITHIN 24 HOURS.
- THE CONTRACT ADMINISTRATOR WILL DOCUMENT ALL INSPECTION ACTIVITIES IN A LOGBOOK THAT WILL BE SUBMITTED TO THE CITY OF LONDON AT THE COMPLETION OF CONSTRUCTION.
- PRIOR TO REMOVAL OF EROSION AND SEDIMENT CONTROL MEASURES, THE CONTRACT ADMINISTRATOR AND THE CITY OF LONDON SHALL CONDUCT A JOINT INSPECTION OF THE CONSTRUCTION SITE TO CONFIRM THAT THE MEASURES CAN BE REMOVED AND DISCUSS THE METHODS THAT WILL BE USED FOR REMOVAL.

THE CONTRACT ADMINISTRATOR SHALL PREPARE INSPECTION REPORTS FOR THE DURATION OF CONSTRUCTION, AND SUBMIT THEM TO THE CITY OF LONDON BY APRIL 1, JULY 1, AND NOVEMBER 1 OF EACH YEAR UNTIL ALL WORKS AND SERVICES OF THE PLAN ARE COMPLETED.

- THE INSPECTION REPORT SHOULD DOCUMENT ANY REPAIRS, RAINFALL OR PUMPING THAT HAS OCCURRED SINCE THE LAST REPORT, AND ANY RISKS OF FAILURE THAT MAY BE PRESENT.
- ADDITIONALLY, ANY FAILURE OF THE PROPOSED TEMPORARY EROSION & SEDIMENT CONTROL MEASURES SHALL BE REPORTED AS DESCRIBED IN THE CONTINGENCY PLAN.

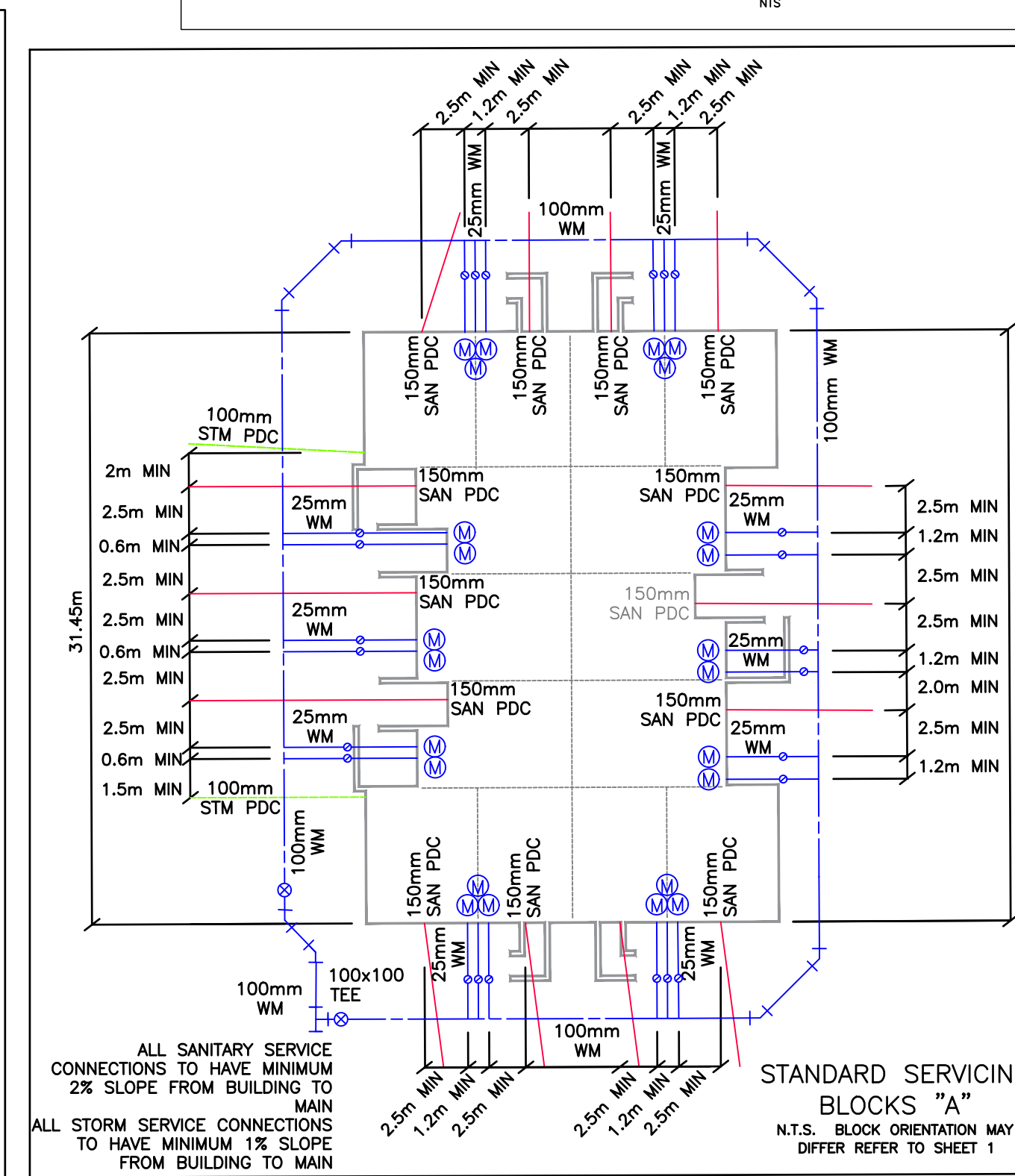
**TYPICAL SWALE WITH SUBDRAIN DETAIL N.T.S.**

WHERE SWALES HAVE A SLOPE LESS THAN 2% A SUBDRAIN WILL BE INSTALLED PER THIS DETAIL. DETAIL BASED ON OPSD 207.044



**STANDARD SERVICING BLOCKS "B"**

N.T.S. BLOCK ORIENTATION MAY DIFFER REFER SHEET 1



**STANDARD SERVICING BLOCKS "A"**

N.T.S. BLOCK ORIENTATION MAY DIFFER REFER SHEET 1

Revision	By	Appd.	YY.MM.DD	
1.0 REVISED FOR SPA	RWR	DV	24.09.25	
2.0 ISSUED FOR SPA	RWR	DV	24.09.25	
1.0 ISSUED FOR SPA PRE-CONSULTATION	RWR	DV	24.07.26	
Issued	By	Appd.	YY.MM.DD	
File Name: dwg_161414378_Civil	RWR	DV	RWR	23.10.30
	Dwn.	Chkd.	Dsgn.	YY.MM.DD

**Permit-Seal**



Client/Project  
SIFTON PROPERTIES LIMITED

4040 Colonel Talbot Road



London, ON Canada

Title

NOTES & DETAILS

Project No. 161414378

Drawing No. Sheet

Scale

Revision

W:\161414378\design\dwg\civ\sheet\161414378\_Civil.dwg 2024-09-25 1:53 PM by: austin.banc