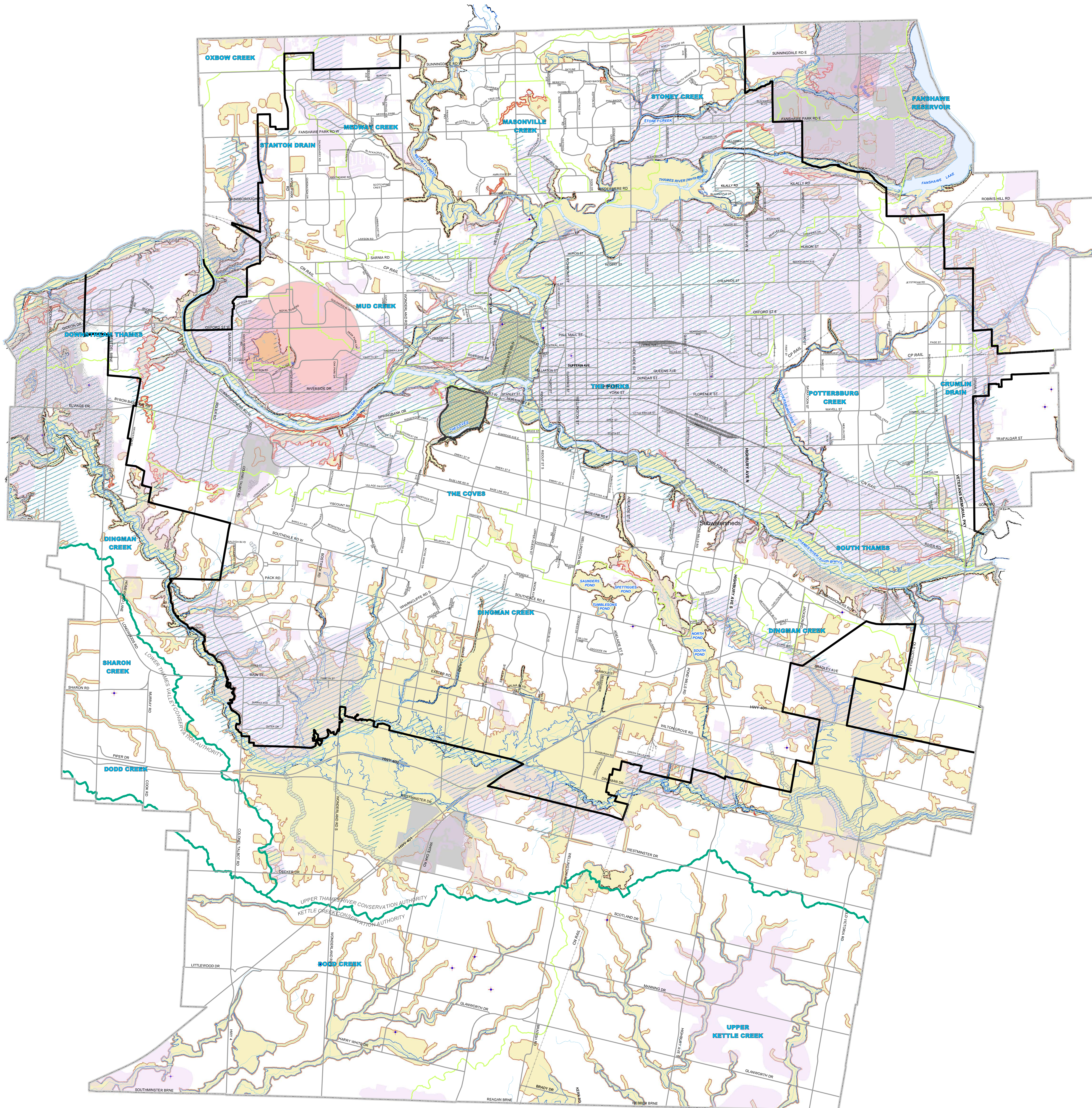


# MAP 6 - HAZARDS AND NATURAL RESOURCES



## LEGEND

### HAZARDS

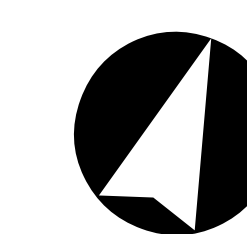
- Regulatory Flood Line  
NOTE 1: Flood Lines shown on this map are approximate. The precise delineation of flood plain mapping is available from the Conservation Authority having jurisdiction.
- Maximum Hazard Line  
NOTE 2: Flood Fringe mapping for certain areas of the City is available from the Upper Thames Conservation Authority.
- Special Policy Areas
- Potential Special Policy Areas
- Riverine Erosion Hazard Limit for Confined Systems
- Riverine Erosion Hazard Limit for Unconfined Systems
- Conservation Authority Regulation Limit
- Abandoned Oil/Gas Wells  
NOTE: Sharp Shapes Outside the Riverine Erosion Hazard Limit on the map are approximate. Precise delineation is available from the Conservation Authority having jurisdiction.

### NATURAL RESOURCES

- Aggregate Resource Areas
- Extractive Industrial Areas
- Wellhead Protection Areas
- Emergency Municipal Water Wells
- Significant Groundwater Recharge Areas
- Highly Vulnerable Aquifers

### BASE MAP FEATURES

- Streets (See Map 3)
- Railways
- Urban Growth Boundary
- Water Courses/Ponds
- Water Bodies
- Conservation Authority Boundary
- Subwatershed Boundary
- STONEY CREEK** Subwatershed Name



0 1 2 3 4  
Kilometers

1:30,000

ADOPTED BY COUNCIL ON JUNE 23, 2016

APPROVED BY THE MINISTRY OF  
MUNICIPAL AFFAIRS ON DECEMBER 28, 2016

LONDON PLAN CONSOLIDATED  
MAY 24, 2024

**THIS MAP MUST BE READ IN CONJUNCTION  
WITH THE TEXT OF THE LONDON PLAN**

While every effort has been made to ensure that the mapping is accurate, a reader should verify all information contained in this map before acting upon it by contacting the City Clerk's Office, Suite 308, 300 Dufferin Avenue, London, Ontario, N6B 1Z2 or by calling (519) 661-2500 extension 4939