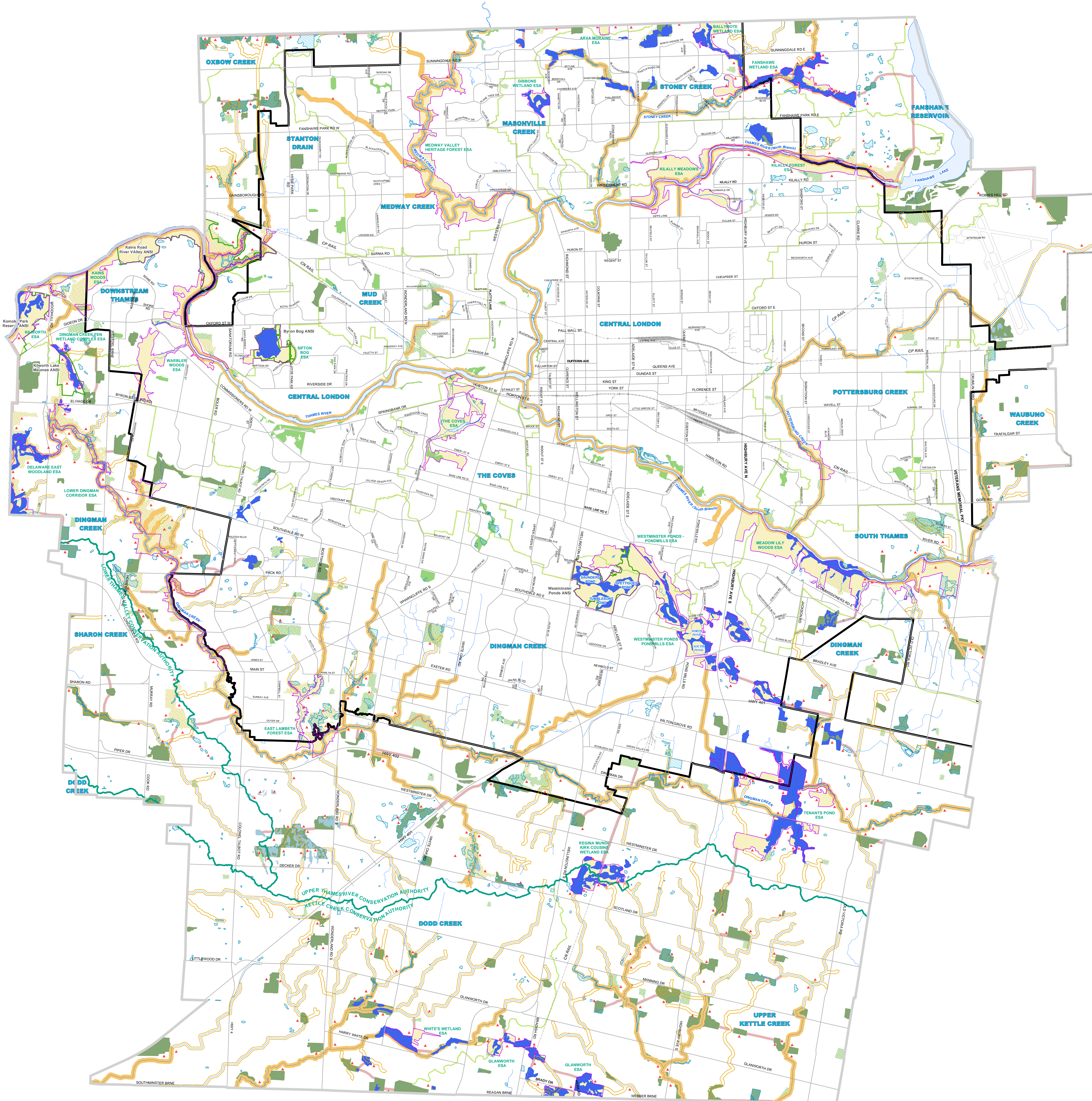


# MAP 5 - NATURAL HERITAGE



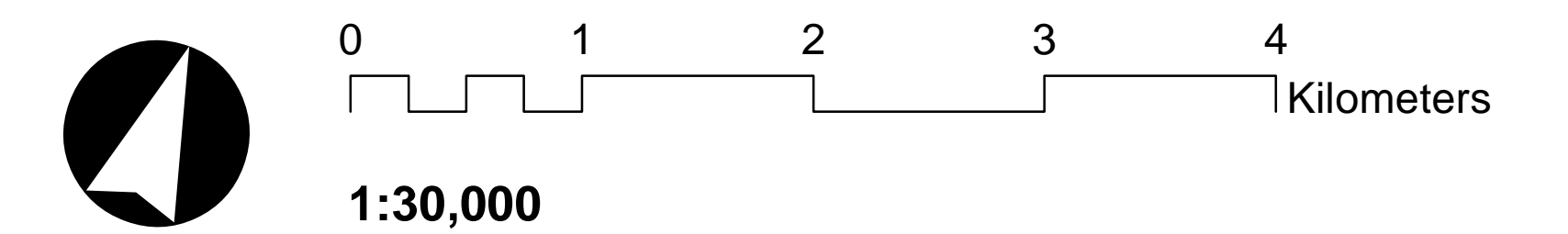
## LEGEND

### NATURAL HERITAGE SYSTEM

- |                                   |  |
|-----------------------------------|--|
| Provincially Significant Wetlands | Areas of Natural and Scientific Interest |
| Wetlands                          | Environmentally Significant Areas (ESA)  |
| Unevaluated Wetlands              | Potential ESAs                           |
| Significant Woodlands             | Upland Corridors                         |
| Woodlands                         | Potential Naturalization Areas           |
| Significant Valleylands           | Unevaluated Vegetation Patches           |
| Valleylands                       |  |

### BASE MAP FEATURES

- |                       |                                 |
|-----------------------|---------------------------------|
| Streets (See Map 3)   | Water Bodies                    |
| Railways              | Conservation Authority Boundary |
| Urban Growth Boundary | Subwatershed Boundary           |
| Water Courses/Ponds   | Subwatershed Name               |



ADOPTED BY COUNCIL ON JUNE 23, 2016

APPROVED BY THE MINISTRY OF  
MUNICIPAL AFFAIRS ON DECEMBER 28, 2016

LONDON PLAN CONSOLIDATED  
MAY 24, 2024

**THIS MAP MUST BE READ IN CONJUNCTION  
WITH THE TEXT OF THE LONDON PLAN**

*While every effort has been made to ensure that the mapping is accurate, a reader should verify all information contained in this map before acting upon it by contacting the City Clerk's Office, Suite 308, 300 Dufferin Avenue, London, Ontario, N6B 1Z2 or by calling (519) 661-2500 extension 4939*