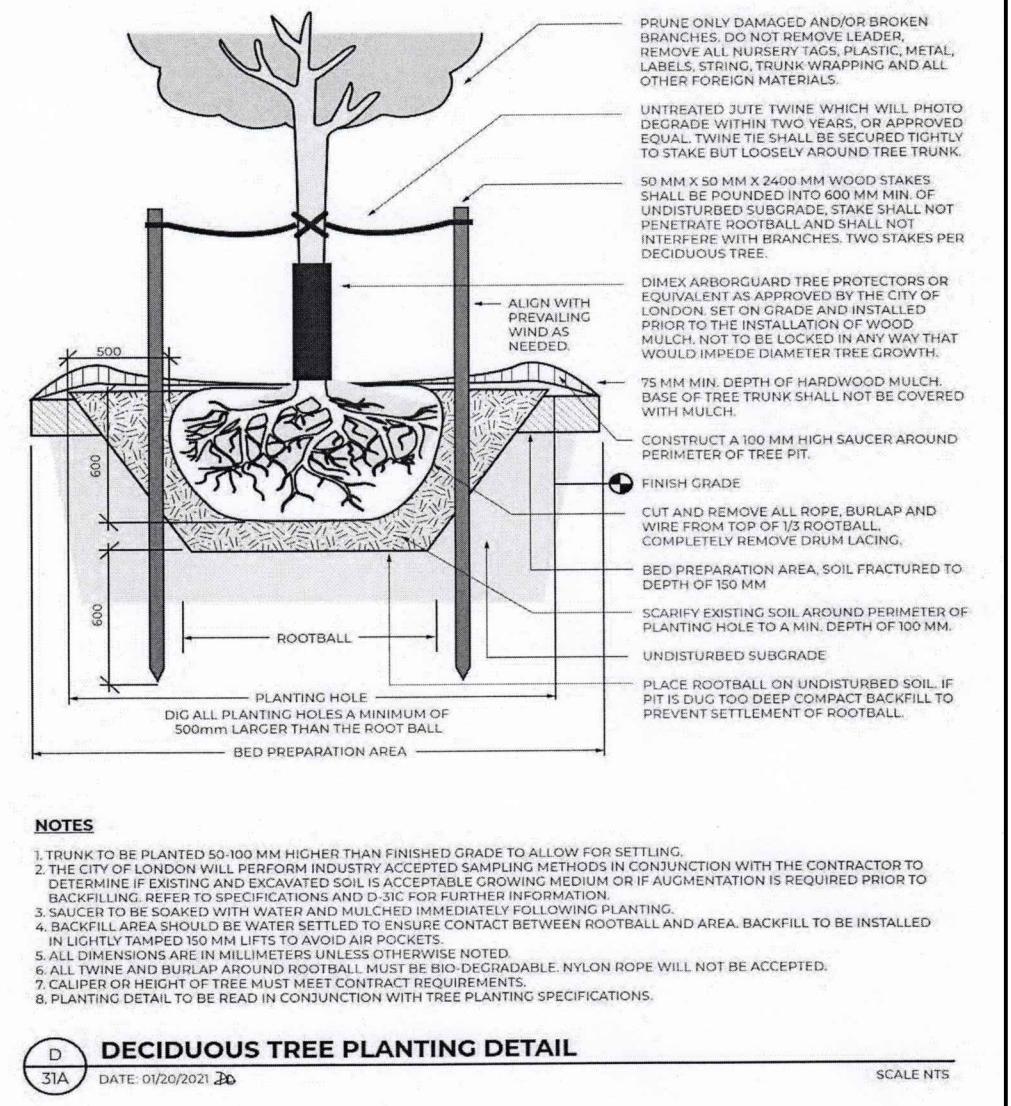
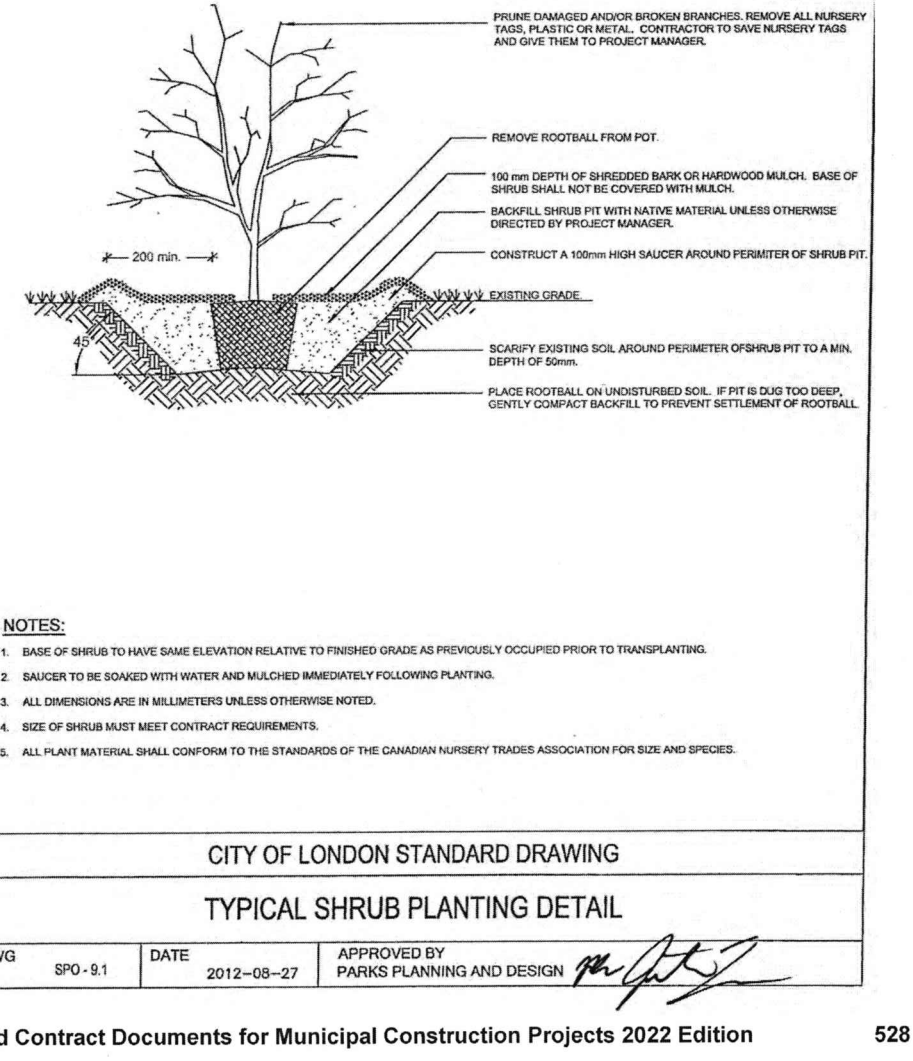


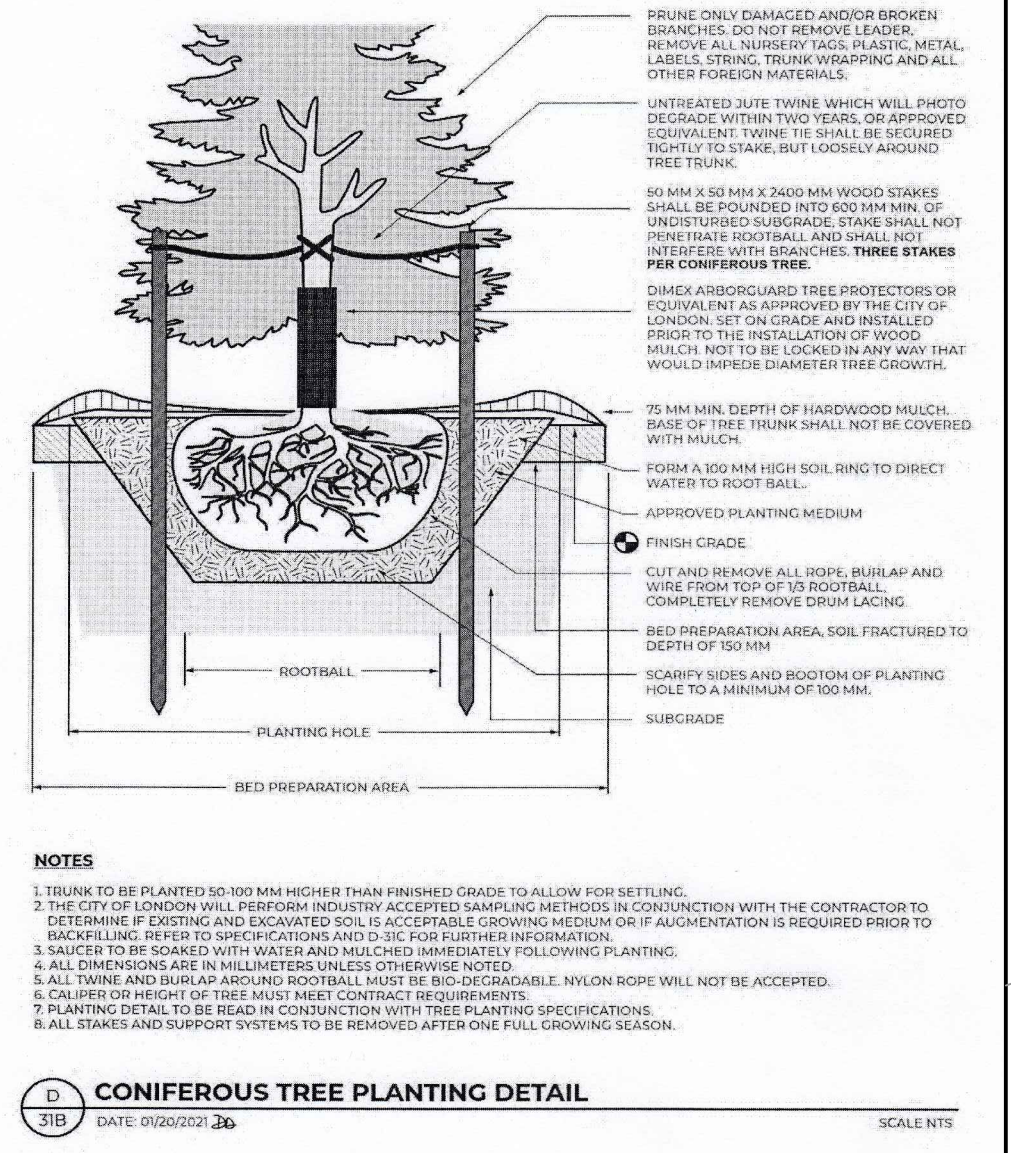
Deciduous Tree Planting Detail



Shrub Planting Detail



Coniferous Tree Planting Detail

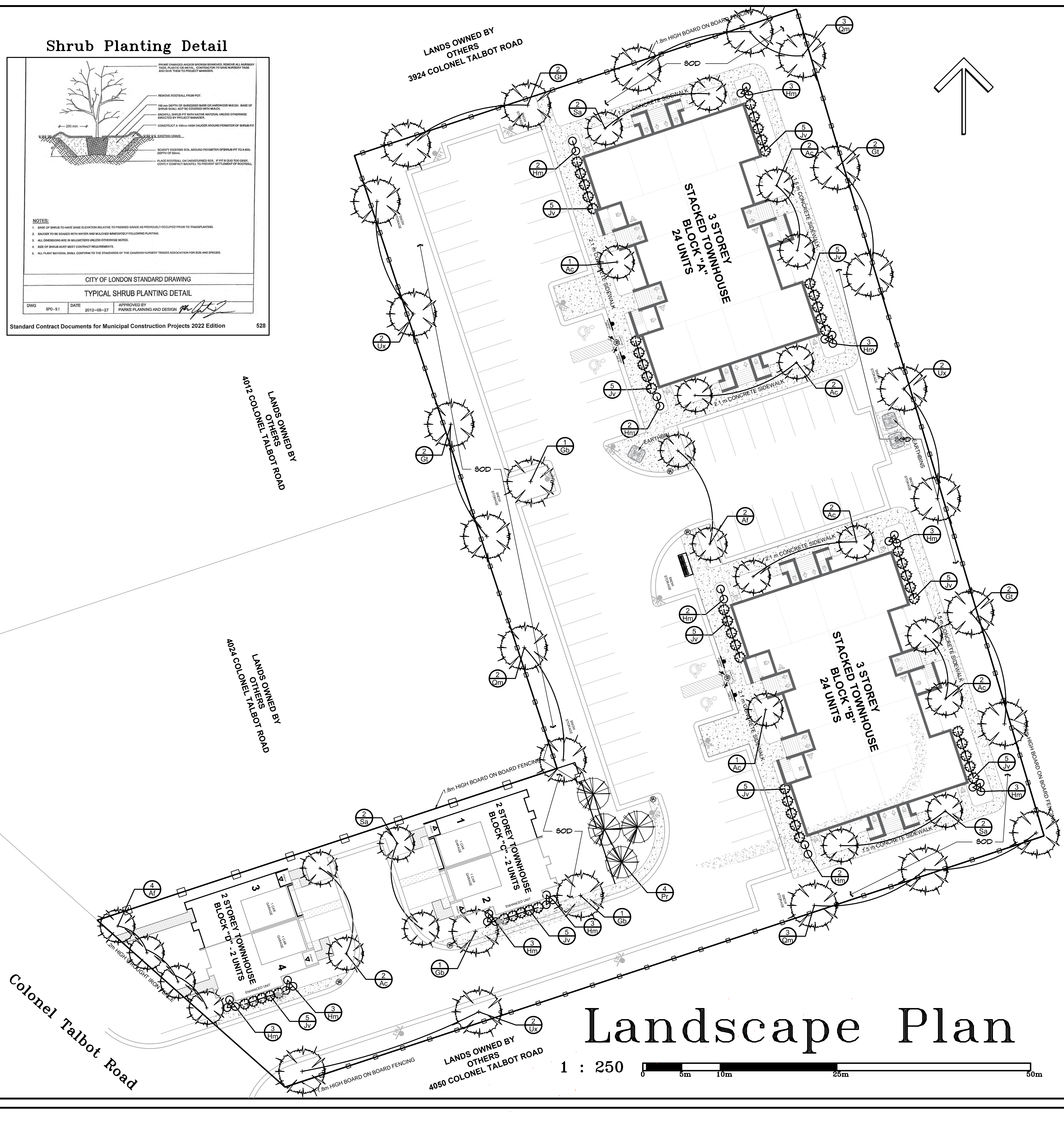


Notes

1. Site layout in accordance with site plan.
2. Landscape plan to be read in conjunction with current site servicing and grading plans.
3. Layout of all plant material to be approved in the field by the Landscape Architect prior to installation.
4. Contractor is responsible for utility and servicing locations. Any damage to utilities is the responsibility of the contractor for repair, to the satisfaction of the applicable utility / agency.
5. Contractor is required to confirm any discrepancies with respect to quantities or location of plant material, or other elements indicated on the plan. Do not proceed in uncertainty. Obtain direction as required from the Landscape Architect.
6. The Landscape Architect reserves the right to select / approve plant material at source, without limiting the right to refuse plant material at a future date where there are clear violations of specific characteristics.
7. Contractor is to notify the Landscape Architect upon completion of installation for the purposes of preparing a Certification of Completion. Pruning will be performed by or under the direct supervision of the Landscape Architect, a Certified Arborist or Certified Horticulturist.
8. Contractor is responsible for all installations until accepted by the owner. Plant material shall carry a two year warranty from date of acceptance.
9. Substitution of any plant material is subject to written approval of the Landscape Architect.
10. Tree pits shall be excavated to a minimum of 750mm wider than the root ball of the tree being installed. Trees shall be planted so that the top of the root ball is 100-150mm above the elevation of the top of the surrounding curb.
11. Remove top 1/3 of wire basket and burlap prior to installation and remove from site. Burlap is to be cut away from the stem and root ball to a depth of 300mm from the finished planting surface.
12. Remove guy wires, stakes and other stabilizing materials from trees upon acceptance by the owner or upon completion of the warranty period, whichever is later.
13. Ensure completed planting soil surface is mounded to provide positive drainage to adjacent top of curb enclosure.
14. All topsoil for planting shall be comprised of clay / sandy loam with 4 to 12% organic matter, capable of sustaining appropriate growth of the plants. The soil shall be free of contaminants, roots and stones larger than 25mm in diameter. Required pH for this installation is between 6.0 and 7.0. The Landscape Architect / owner reserves the right to inspect and reject / reject topped prior to application.
15. Mulch shall be placed at a minimum depth of 75mm throughout the planting area. Mulch is to be composed of aged cedar mulch or an allowable substitution upon acceptance by the Landscape Architect.
16. Graded areas to be restored with 200mm topsoil + nursery soil.
17. All plant material shall carry a two year warranty from the date of acceptance from the Landscape Architect. Any plant material replaced under this provision shall carry an additional one year warranty.
18. All work in the road allowance shall meet the minimum specifications of the City of London Standard Drawing SR-1.0. Ensure a minimum of 100mm topsoil is laid in boulevard and protect the City Owned Road Allowance from compaction or soil contamination.
19. Avoid mixing topsoil with subsoil if topsoil is intended to be re-used in landscaped areas. If possible, limit height of stockpile to 3 metres because stockpiling topsoil can result in the disruption and loss of beneficial soil organisms.
20. Ensure the planting locations of all trees are at least 2 metres from the centreline of drainage swales.

Plant List

KEY	No.	NAME	SIZE & CONDITION
N	50	Juniperus virginiana 'hetzli' - Hetz Juniper	80cm height, potted
Pr	4	Pinus resinosa - Red Pine	200 cm height, Wire Basket (W/B)
Ac	11	Amelanchier canadensis - Serviceberry	45 mm caliper; W/B.
Ar	6	Acer x freemantii 'Armstrong' - Armstrong Maple	60 mm caliper; W/B.
Gb	3	Ginkgo biloba 'Autumn Gold' - Autumn Gold Maidenhair Tree	60 mm caliper; W/B.
Gt	8	Gleditsia triacanthos var. 'enervis' 'Streetkeeper' - Streetkeeper Honey Locust	60 mm caliper; W/B.
Qm	8	Quercus macrocarpa - Burr Oak	60 mm caliper; W/B.
Sa	6	Sorbus aucuparia - Mountaish	45 mm caliper; W.B.
Ux	7	Ulmus x Frontier - Frontier Elm	60 mm caliper; W.B.
Hm	32	Hydrangea macrophylla 'Compacta' - Compacta Hydrangea	3 gallon Pot



Landscape Plan

1 : 250

*PLANS AND RELATED DOCUMENTS ARE "INSTRUMENTS OF SERVICE". THE INFORMATION CONTAINED REMAINS THE PROPERTY OF THE COORDINATOR AND PRINCIPAL PROFESSIONAL(S) AND MUST NOT BE REPRODUCED TO BENEFIT ANY OTHER PROJECT.

*THE OWNER WARRANTS THAT SITE PLANS AND CONCEPT PLANS WILL BE VERIFIED BY A SURVEYOR TO INCLUDE DIMENSIONS, BEARINGS, SET BACKS, AREA CALCULATIONS, GRADES, R.O.W., EASEMENTS, DEDICATIONS, AND ENCROACHMENTS.

*BUILDING FOUNDATION LAYOUT MUST BE VERIFIED BY A SURVEYOR.

*PLEASE ASK QUESTIONS IF YOU NEED CLARIFICATION OF INFORMATION FROM "INSTRUMENTS OF SERVICE".

*IT IS THE RESPONSIBILITY OF THE OWNER, VIEWER, TENANT, CONTRACTOR AND TRADER TO BE FAMILIAR WITH THE PROJECT AS A WHOLE. ALL DISCREPANCIES AND DIMENSIONAL ERRORS ON THE PLANS AND RELATED DOCUMENTS MUST BE REPORTED TO THIS OFFICE FOR CONSIDERATION AND CORRECTIVE RE-DESIGN AND RE-ISSUANCE PRIOR TO THE WORK.

date item by

Landscape Architect
Dan Weagant O.A.L.A., C.S.L.A.
 703 Forman Avenue
 Stratford ON N5A 0G2
 519.694.5470
 danweagant@rogers.com

PROJECT:
PROPOSED RESIDENTIAL DEVELOPMENT
 4040 COLONEL TALBOT ROAD
 LAMBETH ONTARIO

SHEET TITLE:
LANDSCAPE PLAN

DATE: SEPT. 18, 2024 DRAWN: M.S.

STANFORD CONSULTING & DESIGN
 625 EMERY STREET EAST - LONDON - ONTARIO - N6C 2G3
 TEL. (519) 679-8889 - Email mstanford@execulink.com

PROFESSIONAL SEAL
 DAN WEAGANT
 LANDSCAPE ARCHITECT
 SEPTEMBER 18, 2024
 6000110001

L: 1

SHEET No.
 SCALE: 1:250
 COMP. REF.
 / LSCAPE PLAN2