

NOTES:

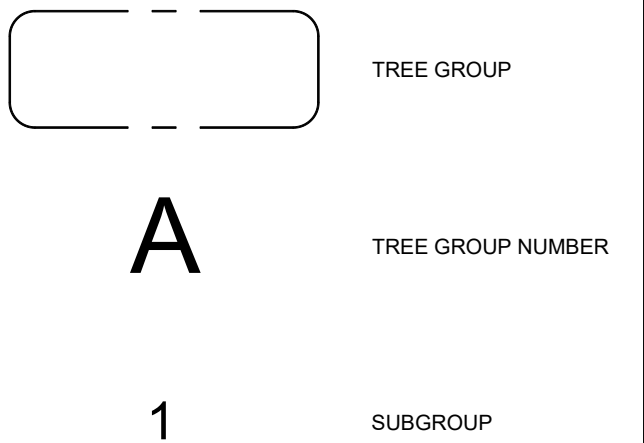
1. VERIFY ALL DIMENSIONS PRIOR TO CONSTRUCTION.
2. DO NOT SCALE DRAWINGS.
3. REPORT ALL DISCOVERIES OF ERRORS, OMISSIONS, OR DISCREPANCIES TO THE ARCHITECT OR DESIGN ENGINEER AS APPLICABLE.
4. USE ONLY LATEST REVISED DRAWINGS OR THOSE THAT ARE MARKED "ISSUED FOR CONSTRUCTION".
5. THE DRAWINGS ARE THE PROPERTY OF THE ARCHITECT AND/OR ENGINEER AND MUST BE RETURNED ON COMPLETION OF THE PROJECT. ANY UNAUTHORIZED USE IS PROHIBITED.
6. AREA CALCULATIONS ARE APPROXIMATE.
7. DATE FORMAT: YYYY-MM-DD

ISSUE & REVISION DESIGNATION
LETTER (A) = ISSUE, No. (1) = REVISION

No.	Date	Issued For / Revisions
A	2023-11-02	ISSUED FINAL REPORT TO CLIENT
B	2024-09-20	ISSUED FOR ZONING AMENDMENT

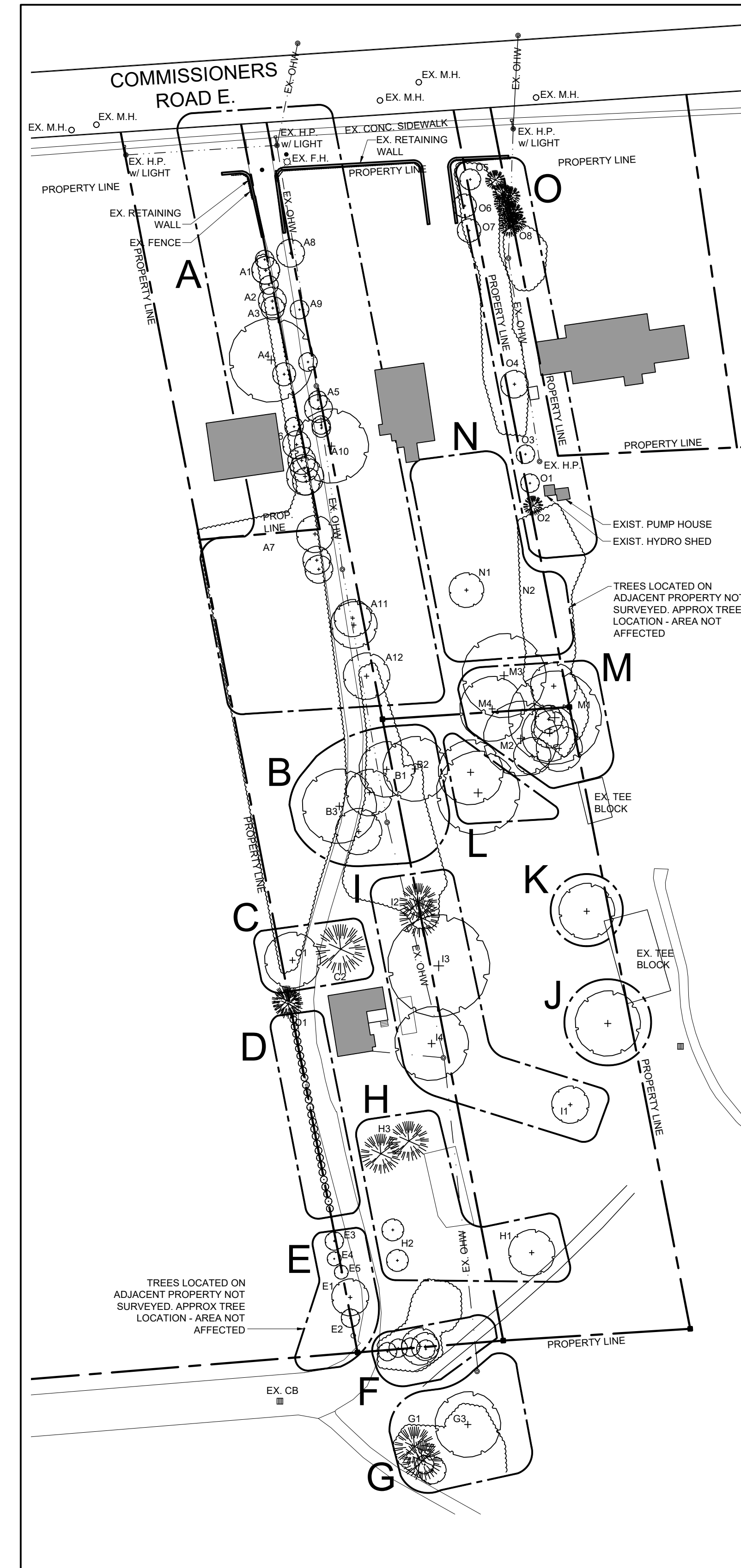
LEGEND:

REFER TO TREE INVENTORY LIST ON DRAWING TL2

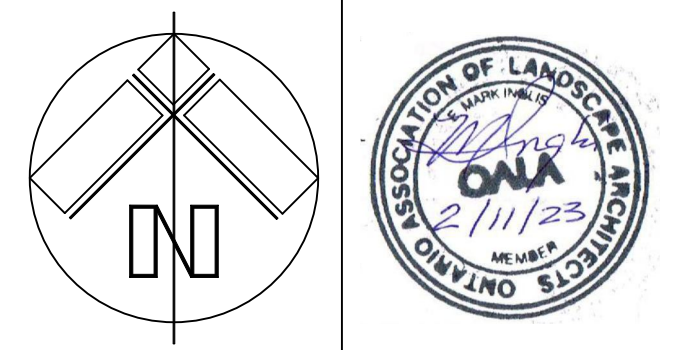


Tree Group no.	Species Botanical Name	Common Name	Size DBH (cm)	radius (m)	Condition	Location	Recommended Action
A							
1	acer platanoides	Norway Maple	15		poor; growing against fill	west side of driveway on residential property line	Retain / Protect
2	acer platanoides	Norway Maple	3	2m	10% dieback; fair	west side of driveway on residential property line	Retain / Protect
3a	celtis occidentalis	Common Hackberry	17		good; in group of three; understory of buckthorn, Norway maple, honeysuckle	west side of driveway on residential property line	Retain / Protect
b	celtis occidentalis	Common Hackberry	28				Retain / Protect
c	celtis occidentalis	Common Hackberry	12				Retain / Protect
4	juglans nigra	Black Walnut	80	6m	good	west side of driveway on residential property line	Retain / Protect
5a	acer platanoides	Norway Maple	20	2m	tar spot on leaves	east side of driveway within GC ownership	remove
b	acer platanoides	Norway Maple	11		tar spot on leaves		remove
6	acer platanoides	Norway Maple	7-14		four trees growing in 2.5m space between driveway and new house		Retain / Protect
7a	juglans nigra	Black Walnut	20-50		23 tree walnut grove; little understory located between driveway, new house construction (north) and rear yards to the west.	west side of driveway on open area of Highland GC	Retain / Protect
b	celtis occidentalis	Common Hackberry	12 + 23		two hackberry trees on edge of driveway		Retain / Protect
8	acer platanoides	Norway Maple	10-17		8 trees naturalizing on edge of driveway		remove
9	acer platanoides	Norway Maple	10-17		multi- and single-stem maples growing into overhead wires on edge of driveway and naturalizing the understory	east side of driveway within GC ownership	remove
10	juglans nigra	Black Walnut	75	6m	located within adjoining property overhanging driveway. Ash and buckthorn naturalizing adjacent to driveway.	east side of driveway on residential/GC property line	Retain / Protect
11	quercus alba	White Oak	48	6m	good	On proposed fire route within site	remove
12	acer platanoides	Norway Maple	32		poor; growing adjacent to driveway, interfering with utilities	On proposed fire route within site	remove
B							
1	juglans nigra	Black Walnut	50		good	Within proposed parking area within site	remove
2	quercus alba	White Oak	50		good	Within proposed parking area within site	remove
3	quercus alba	White Oak	82		good	Within grassy area of site	Retain / Protect
4	mix	Grape, honeysuckle, burningbush	3m ht		dense hedgerow	Within proposed parking area within site	remove
C							
1	juglans nigra	Black Walnut	50		good	Within grassy area of site	Retain / Protect
2	picea abies	Norway Spruce	70	6m	good	Within grassy area of site	Retain / Protect
D							
Adjoining Residential rear yard							
1	Thuja occidentalis	White Cedar	3-4m ht		good; lines west side of driveway	on adjoining lot	Retain / Protect
E							
Adjoining Residential rear yard							
1	juglans nigra	Black Walnut	7+12+22+15		good	on adjoining lot	Retain / Protect
2	fraxinus americana	White Ash	7		good	on adjoining lot	Retain / Protect
3	acer platanoides	Norway Maple	7		good	on adjoining lot	Retain / Protect
4	salix var.	Curly Willow	multistem		good	on adjoining lot	Retain / Protect
5	juniperus sp.	Juniper	multistem		good	on adjoining lot	Retain / Protect
F							
Dense Thicket							
1	acer platanoides	Norway Maple	12-25		good	Within proposed fire route of site	remove
2	mix	Lilac, buckthorn, white cedar	various		Thicket of shrubs containing F1 maples	within grassy area of site	Retain / Protect
G							
Dense Grove							
1	Thuja occidentalis	White Cedar	25-40		grove of cedars with dense edges and clear understory; buckthorn naturalizing on edge	within grassy area of site	Retain / Protect
2	morus alba	Mulberry	10-20		Invasive naturalizing in grove	within grassy area of site	Retain / Protect
3	acer saccharinum	Silver Maple	120	8m	good	within grassy area of site	Retain / Protect
H							
Superintendent House Rear Yard							
1	malus sp.	Apple	multistem		poor; 75% dieback	within future building footprint	remove
2	acer platanoides	Crimson King maple	12		good; young trees	within grassy area of site	Retain / Protect
3	picea abies	Norway Spruce	40+47	6m	Two trees with 2m clear of branches growing together 3m apart	within grassy area of site	Retain / Protect
I							
Superintendent House Side Yard							
1	malus sp.	Apple	multistem		fair; succoring; 25% dieback	within future building footprint	remove
2	pinus strobus	White Pine	38+45		good; growing together	within grassy area of site	Retain / Protect
3	quercus macrocarpus	Bur Oak	125		although showing good growth, the tree is compromised by significant splitting along the main trunk 4m above ground level. This splitting poses a danger to other parts of the property.	within grassy area of site	Retain / Protect
4	juglans nigra	Black Walnut	38		good; pruned for overhead utilities	within grassy area of site	Retain / Protect
J							
Superintendent House Side Yard							
1	juglans nigra	Black Walnut	20	3	fair; 10% dieback	within future building footprint	remove
2	acer platanoides	Norway Maple	15	2	growing into overhead wires	within future building footprint	remove
K							
Superintendent House Side Yard							
1	juglans nigra	Black Walnut	65	5	20% dieback	within future building footprint	remove
L							
Superintendent House North Side Yard							
1	acer saccharinum	Silver Maple	"63+76	5	20% dieback	within future building footprint	remove
M							
Adjacent Lot North of Superintendent House - property line							
1	pinus resinosa	Red Pine	38		good; growing in crowded property line	within future building parking	remove
2	juglans nigra	Black Walnut	25-40		good; Three walnuts growing on/near property line	within future building parking	remove
3	acer saccharinum	Silver Maple	90		poor	North of future parking	remove
4	acer platanoides	Norway Maple	43		10% dieback; fair	North of future parking	remove
N							
Adjacent Lot North of Superintendent House							
1	ginkgo biloba	Ginkgo	25	2m	good	On residential property	Retain / Protect
2	juglans nigra	Black Walnut	25-60		good; 4 trees	On residential property	Retain / Protect
O							
Easement from Commissioners Road to Golf Course							
1	juglans nigra	Black Walnut	25-50		Four trees growing into fence; fair		Retain / Protect
2	pinus sylvestris	Scots Pine	22		growing with walnuts		Retain / Protect
3	acer platanoides	Norway Maple	50		two trees growing near property line; 20m ht.; good condition		Retain / Protect
4	acer platanoides	Norway Maple	15		growing near property line; within mix of buckthorn, ash grape, burningbush; good condition	In easement from Commissioners Road to Golf Course	Retain / Protect
5	acer saccharinum	Silver Maple	65	7m	50% dieback; poor		Retain / Protect
6	juglans nigra	Black Walnut	50+55		good; within hedgerow of plants west of easement		Retain / Protect
7	juglans nigra	Black Walnut	22		good; within hedgerow of plants west of easement		Retain / Protect
8	juniperus virginiana	Eastern Red Cedar	5m ht		on property east of easement		Retain / Protect

TREE INVENTORY LIST
SCALE: N.T.S.



TREE INVENTORY PLAN
SCALE: 1:750



York Urbanist
25 Main Street, Kleinburg, ON, L0J 1C0
yorkurbanist@gmail.com · www.yorkurbanist.com
t:416-779-8862

Project:
Highland G&CC Maintenance Facility
1922 Highland Heights, London, ON N6C 2T4

Drawing:
TREE INVENTORY PLAN

Drawn By:	Job Captain:	Proped No.:
CW	MI	
Scale:	2139	
AS NOTED		
Plot Date:	Sheet No.:	
2024-09-20		
Current Issue:	Current Revision:	
B	-	TL1