

NOTES:

- EXISTING TREES ARE TO BE PROTECTED FROM CONSTRUCTION WITH THE INSTALLATION OF A 1200MM (4'-0") HIGH SNOW FENCE HELD IN PLACE WITH 800MM (6'-0") T-BARS. THE BARRIER IS TO BE INSTALLED PRIOR TO ANY CONSTRUCTION AND MUST REMAIN IN PLACE UNTIL ALL CONSTRUCTION IS COMPLETED.
- ALL SUPPORTS AND BRACING SHOULD BE INSIDE THE TREE PROTECTION ZONE. ALL SUCH SUPPORTS SHOULD MINIMIZE DAMAGING ROOTS IN THE TREE PROTECTION ZONE.
- NO CONSTRUCTION ACTIVITY, GRADE CHANGES, SURFACE TREATMENT, OR EXCAVATION OF ANY KIND IS PERMITTED WITHIN THE TREE PROTECTION ZONE.
- NO MOVEMENT OF EQUIPMENT, STORAGE OF BUILDING SUPPLIES, CLEANING OR EQUIPMENT, OR DUMPING OF SOLVENTS, GASOLINE, ETC. MAY OCCUR WITHIN THIS FENCE LINE.
- WHERE HIGH QUALITY SPECIFICATIONS OCCUR ADJACENT TO AREAS SUBJECTED TO INTENSIVE CONSTRUCTION ACTIVITY, WOODEN CRIBBING SHOULD BE INSTALLED TO PROTECT TRUNKS FROM DAMAGE IN THE EVENT THAT HEAVY EQUIPMENT BREAKS DOWN THE SNOW FENCING. FENCE TO BE INSPECTED BY ENVIRONMENTAL CONSULTANT ON A REGULAR BASIS AND BE MAINTAINED BY THE SUBDIVIDER / BUILDER.

TEMP. TREE PROTECTION BARRIER - N.T.S.

TREE PRESERVATION PLAN

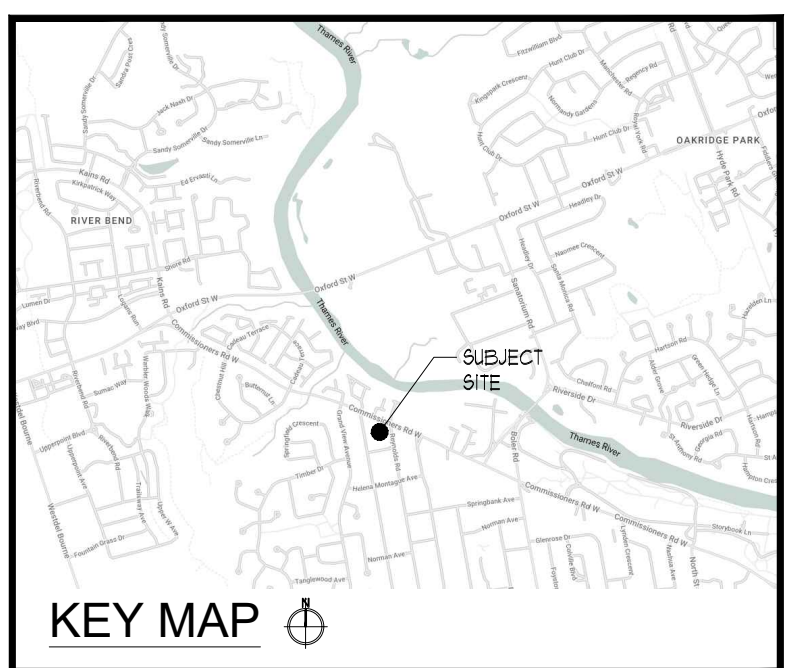
SCALE = 1:200

TREES TO BE PRESERVED

GENERAL INFORMATION		SIZE	HEALTH & CONDITION		RECOMMENDATIONS							
ID #	BOTANICAL NAME	COMMON NAME	LOCATION	DBH (cm)	CANOPY RADII (m)	ORIENTATION	STRUCTURAL FORM	STRUCTURAL INTEGRITY	COMMENTS	EXPECTED CONSTRUCTION IMPACTS	PRESERVE OR REMOVE	IMPACT MITIGATION or REMOVAL RATIONALE
1	<i>Thuja occidentalis</i>	White Cedar	Boundary 142 Commissioners Road W (subject site) and 1418 Commissioners Road W	-35, 30, 20, 20	3	5	Fair	Fair	Multi-stem 4, fence built around stems, low primary union	no expected construction impacts	preserve	tree protection barrier
11	<i>Juglans nigra</i>	Black Walnut	1404 Commissioners Road W	-30	3	4/5	Fair	Good	Minor deadwood	no expected construction impacts	preserve	tree protection barrier
12	<i>Picea spp.</i>	Spruce	1404 Commissioners Road W	-28	3	1	Fair	Fair	Fully dead	minor anticipated impacts - review at the time of SPA	preserve	tree protection barrier
13	<i>Picea pungens</i>	Colorado Spruce	1404 Commissioners Road W	-40	3	4	Fair	Fair	Minor deadwood, limbed up	minor anticipated impacts - review at the time of SPA	preserve	tree protection barrier
14	<i>Picea pungens</i>	Colorado Spruce	1404 Commissioners Road W	-25, 15	2	4	Fair	Good	Minor deadwood, codominant, light union, limbed up	minor anticipated impacts - review at the time of SPA	preserve	tree protection barrier
15	<i>Picea pungens</i>	Colorado Spruce	1404 Commissioners Road W	-40	4	4	Fair	Fair	View of entire tree limited, sparse, limbed up	minor anticipated impacts - review at the time of SPA	preserve	tree protection barrier
16	<i>Picea pungens</i>	Colorado Spruce	1404 Commissioners Road W	-40	4	4	Fair	Good	View of entire tree limited, sparse, limbed up	minor anticipated impacts - review at the time of SPA	preserve	tree protection barrier
17	<i>Picea pungens</i>	Colorado Spruce	1404 Commissioners Road W	-45	4	4	Fair	Good	View of entire tree limited, sparse, limbed up	minor anticipated impacts - review at the time of SPA	preserve	tree protection barrier
18	<i>Acer platanoides</i>	Norway Maple	1404 Commissioners Road W	-20	3	5	Fair	Good	Limited view of entire tree, suppressed	minor anticipated impacts - review at the time of SPA	preserve	tree protection barrier
19	<i>Juglans nigra</i>	Black Walnut	1404 Commissioners Road W	-50	4.5	5	Fair	Good	Limited view of entire tree, low branch	minor anticipated impacts - review at the time of SPA	preserve	tree protection barrier
25	<i>Thuja spp.</i>	Cedar	1408 Commissioners Road W (subject site)	<10	2	5	Good	Good	Recently planted, full form	no anticipated conflict	preserve	tree protection barrier
26	<i>Thuja spp.</i>	Cedar	1408 Commissioners Road W (subject site)	<10	2	5	Good	Good	Recently planted, full form	no anticipated conflict	preserve	tree protection barrier
27	<i>Thuja spp.</i>	Cedar	1408 Commissioners Road W (subject site)	<10	2	5	Good	Good	Recently planted, full form	no anticipated conflict	preserve	tree protection barrier
28	<i>Thuja spp.</i>	Cedar	1408 Commissioners Road W (subject site)	<10	2	5	Good	Good	Recently planted, full form	no anticipated conflict	preserve	tree protection barrier
29	<i>Thuja spp.</i>	Cedar	1408 Commissioners Road W (subject site)	<10	2	5	Good	Good	Recently planted, full form	no anticipated conflict	preserve	tree protection barrier
VEG UNITS												
veg 1	<i>Thuja spp.</i>	Cedar	Boundary 142 Commissioners Road W (subject site), 1418 Commissioners Road W, and partially located within the City ROW	-10-20	3	4	Fair	Fair	wood fence built around some individual trunks, lower limbs pruned, sparse	no expected construction impacts	preserve	tree protection barrier

TREES TO BE REMOVED

GENERAL INFORMATION		SIZE	HEALTH & CONDITION		RECOMMENDATIONS							
ID #	BOTANICAL NAME	COMMON NAME	LOCATION	DBH (cm)	CANOPY RADII (m)	ORIENTATION	STRUCTURAL FORM	STRUCTURAL INTEGRITY	COMMENTS	EXPECTED CONSTRUCTION IMPACTS	PRESERVE OR REMOVE	IMPACT MITIGATION or REMOVAL RATIONALE
2	<i>Acer saccharum</i>	Sugar Maple	1412 Commissioners Road W (subject site)	96	5	4/5	Fair	Fair	Sparse low primary union, included bark at union	conflict with proposed entrance and parking	remove	construction conflict
3	<i>Thuja occidentalis</i>	White Cedar	1412 Commissioners Road W (subject site)	38, 36, 36, 34	5	4/5	Poor	Fair	Multi-stem 4, primary union at grade	conflict with proposed building	remove	construction conflict
4	<i>Liriodendron tulipifera</i>	Tulip Tree	1412 Commissioners Road W (subject site)	55	5.5	4/5	Fair	Good	Minor deadwood	conflict with proposed building	remove	construction conflict
5	<i>Picea pungens</i>	Colorado Spruce	1412 Commissioners Road W (subject site)	40	5	5	Fair	Good	Limbed up	conflict with proposed parking	remove	construction conflict
6	<i>Picea glauca</i>	White Spruce	1412 Commissioners Road W (subject site)	35	4	5	Fair	Good	Limbed up	conflict with proposed parking	remove	construction conflict
7	<i>Picea pungens</i>	Colorado Spruce	1412 Commissioners Road W (subject site)	37	4.5	5	Fair	Good	Limbed up, suppressed	conflict with proposed parking	remove	construction conflict
8	<i>Malus spp.</i>	Apple	1412 Commissioners Road W (subject site)	-8, 12	2	5	Fair	Fair	Low primary union, grown into wood fence	conflict with proposed parking	remove	construction conflict
9	<i>Thuja occidentalis</i>	White Cedar	1408 Commissioners Road W (subject site)	29, 26, 21, 20, 15, 13, 13	4.5	5	Fair	Good	Low primary union at grade	conflict with proposed walkway and anticipated utilities	remove	construction conflict
10	<i>Picea glauca</i>	White Spruce	1408 Commissioners Road W (subject site)	38	4.5	3/4	Fair	Good	Sparse	conflict with proposed walkway and anticipated utilities	remove	construction conflict
20	<i>Fagus sylvatica purpurea</i>	Purple beech	1408 Commissioners Road W (subject site)	8	0.5	5	Good	Good	Recently planted, full form	planted as part of previous landscape	remove	opportunity to transplant to a more suitable location
21	<i>Prunus spp.</i>	Pear	1408 Commissioners Road W (subject site)	8	1	5	Good	Good	Recently planted, full form	planted as part of previous landscape	remove	opportunity to transplant to a more suitable location
22	<i>Calathea speciosa</i>	Northern Calathea	1408 Commissioners Road W (subject site)	44.4	6	4	Poor	Fair	Major cavity between codominant stems, deadwood throughout	conflict with proposed building	remove	construction conflict
23	<i>Malus spp.</i>	Apple	1408 Commissioners Road W (subject site)	-45	6	3	Poor	Fair	Deadwood throughout, minor cavities forming, poor branch attachments	conflict with proposed building, sidewalk, and parking	remove	construction conflict
24	<i>Picea pungens</i>	Colorado Spruce	1408 Commissioners Road W (subject site)	-30	4.5	3	Good	Good	Branches to grade, full form	conflict with proposed building and amenity area	remove	construction conflict
veg 2	<i>Thuja spp.</i>	Cedar	1412 Commissioners Road W (subject site)	-10-20	1.5	4	Poor	Fair	canopy one sided east, multiple trunks leaning east, deadwood throughout, interior sparse	conflict with proposed parking	remove	construction conflict
veg 3	<i>Thuja spp.</i>	Cedar	1408 Commissioners Road W (subject site)	-10-30	3	4	Fair	Fair	canopy one sided east, multiple trunks leaning east, multiple trees are multi-stemmed with the primary union at grade	conflict with proposed parking and building	remove	construction conflict
veg 4	<i>Thuja spp.</i>	Cedar	1412 Commissioners Road W (subject site)	<10	3	5	Fair	Good	hedge approx. 1.5 meters tall, dense	conflict with proposed parking	remove	construction conflict



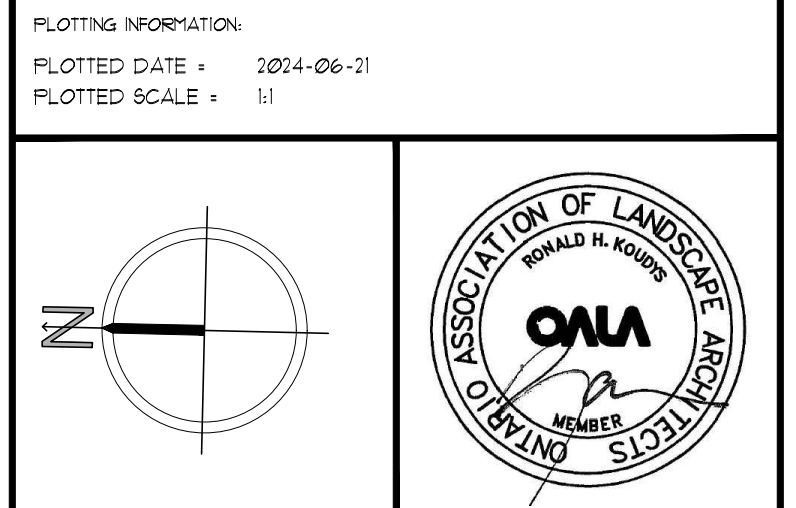
RON KOUJDYS LANDSCAPE ARCHITECTS INC.

ALL DRAWINGS REMAIN THE PROPERTY OF THE LANDSCAPE ARCHITECT AND SHALL NOT BE REPRODUCED OR REUSED WITHOUT THE LANDSCAPE ARCHITECTS WRITTEN PERMISSION.

THIS DRAWING SHALL NOT BE USED FOR CONSTRUCTION OR TENDER PURPOSES UNLESS SIGNED AND DATED BY RONALD H. KOUJDYS, O.A.L.A. C.S.L.A. LANDSCAPE ARCHITECT, LONDON, ONTARIO (519) 667-3322.

Ronald H. Koujdy, O.A.L.A. C.S.L.A. DATE

DATE	DESCRIPTION	No.
2024-06-21	ISSUED FOR ZBA	2
2024-06-11	ISSUED FOR REVIEW	1



PROJECT TITLE:
DOMDAY DEVELOPMENTS APARTMENTS
1408 & 1412 COMMISSIONERS ROAD W.
LONDON, ONTARIO

DRAWING TITLE:
TREE PRESERVATION PLAN

DATE: MAY, 2024 SCALE: AS NOTED DRAWING No. T-1

DRAWN: RKL/A INC. CHECKED BY: RHK

PROJECT No. 24-141L ZBA