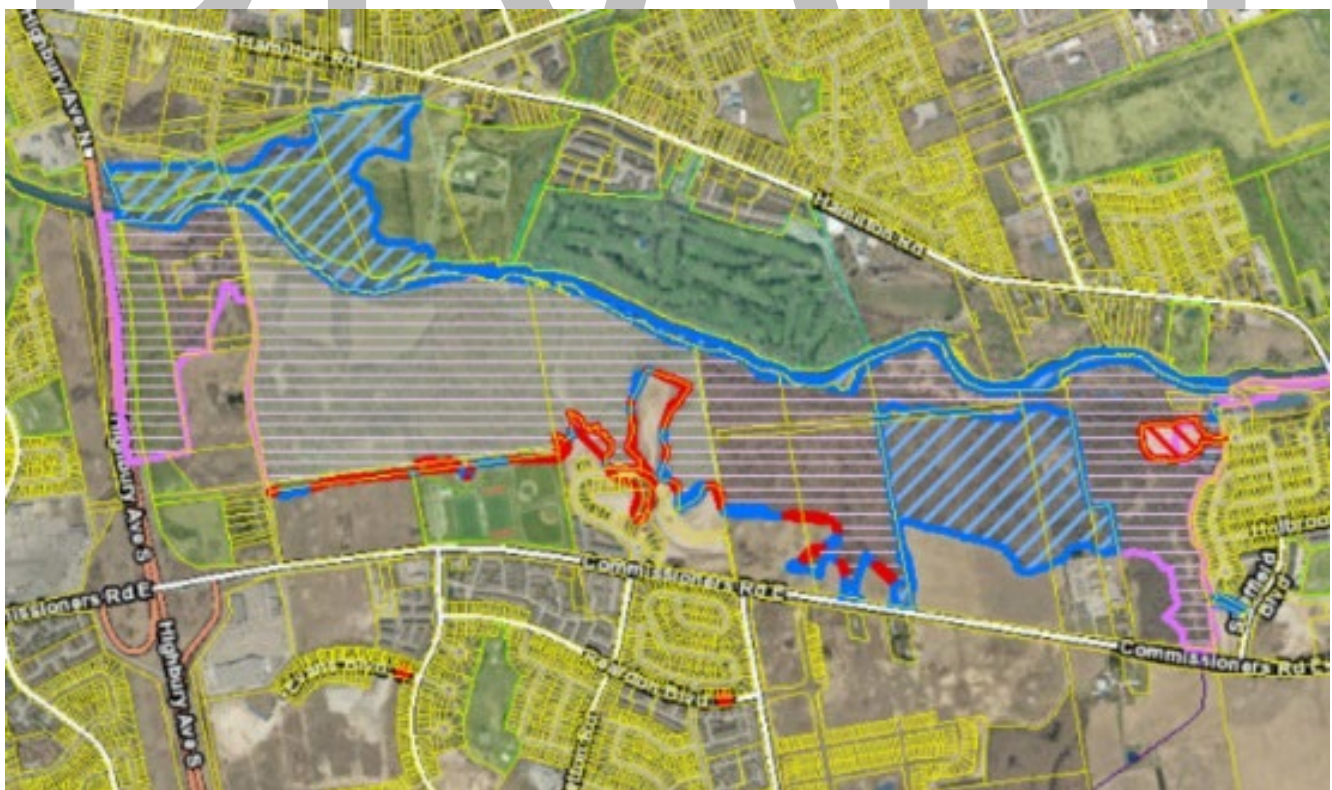


Purple Hatching: Existing, and remaining, natural heritage feature
 Blue Hatching: Added lands to Map 5 – Natural Heritage
 Red Hatching: Deleted lands from Map 5 – Natural Heritage



1. City of London; 1410 Lawson Drive
 Added: Significant Woodlands and Wetlands

DRAFT



2. Several Addresses on Norlan Ave, Meadowlily Rd North, Meadowlily Rd South, Meadowlark Ridge, and Commissioners Road East; Previous Application: 39T00517

Removed: ESA boundary adjustment to match previous zoning update
 Added: ESA boundary adjustment to match previous zoning update, with significant portions added to the north and east of the current ESA boundary



- 3. 220 Oriole Lane; Previous Application: 39T-17502
Added: ESA boundary extended

DRAFT



- 4. 930 Deveron Crescent; Previous Application: 39CD-23508
Added: Significant Woodlands



5. 2076 – 2124 Evan Boulevard; Previous Application: 39T-92020E

Removed: Potential ESA

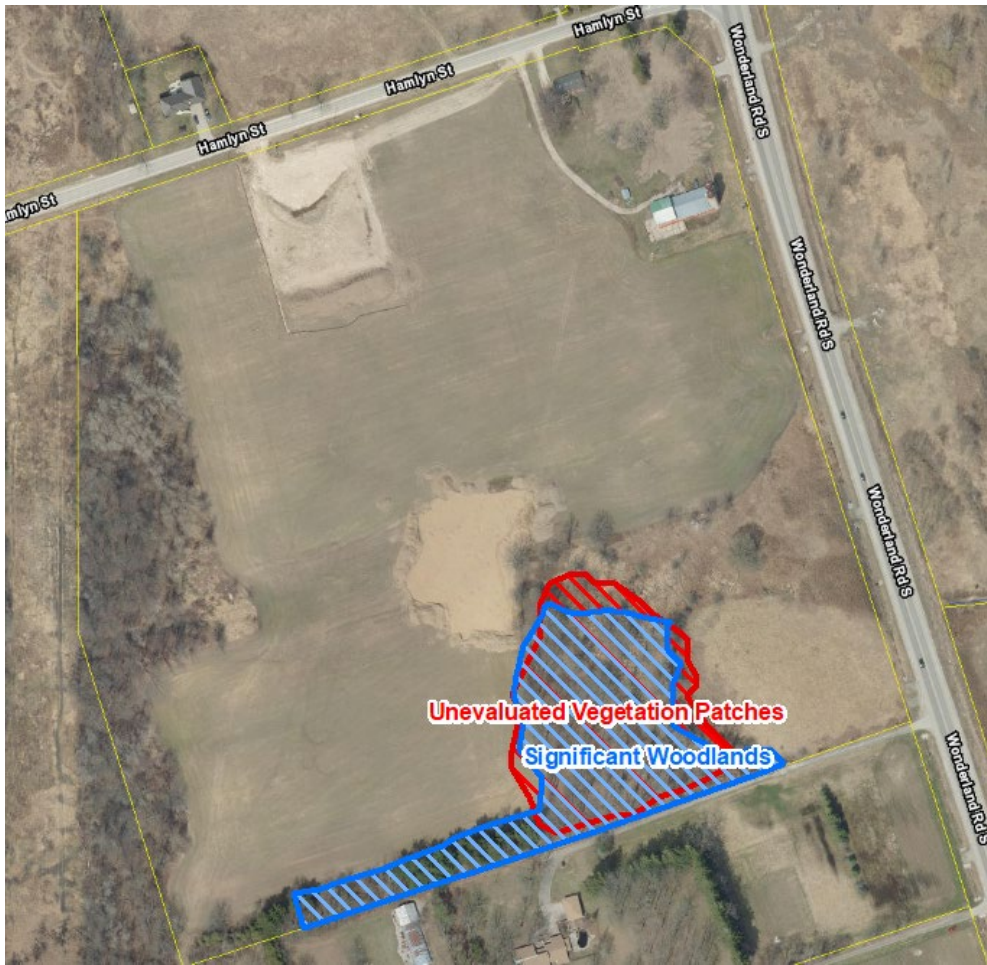
Added: ESA boundary adjustment

DRAFT



6. City of London; 1577 Wilton Grove Road; Previous Application: SPA18-132

Added: Wetland



7. 6019 Hamlyn Street; Previous Application: 39T-18504
 Removed: Unevaluated Vegetation Patches
 Added: Significant Woodlands

DRAFT



8. 6019 Hamlyn Street; Previous Application: 39T-18504
 Removed: Unevaluated Wetlands
 Added: Wetlands



9. 6019 Hamlyn Street; Previous Application: 39T-18504
Removed: Potential ESA
Added: ESA

DRAFT



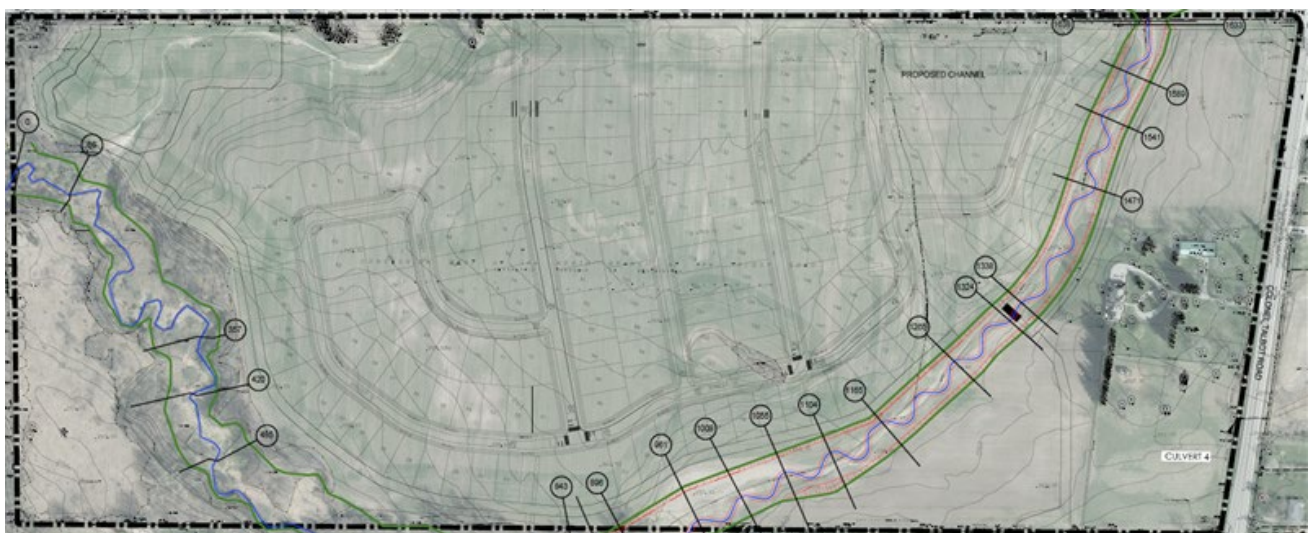
10. 325 Middleton Avenue; Previous Application: 39T-15501
Added: Wetlands



11. 7395 Silver Creek Crescent; Previous Application: 39T-14504

Removed: Eastern ESA
 Added: Western ESA

DRAFT



12. 7395 Silver Creek Cres; Previous Application: 39T-14504

Added: Floodplain (Green Line)



13. 3263 Wonderland Road South; Previous Application: OZ 6340, OZ 8590
Removed: Unevaluated Wetland

DRAFT



14. 2080 Upperpoint Boulevard; Previous Application: 39T-14505

Removed: Woodland
Added: Woodland

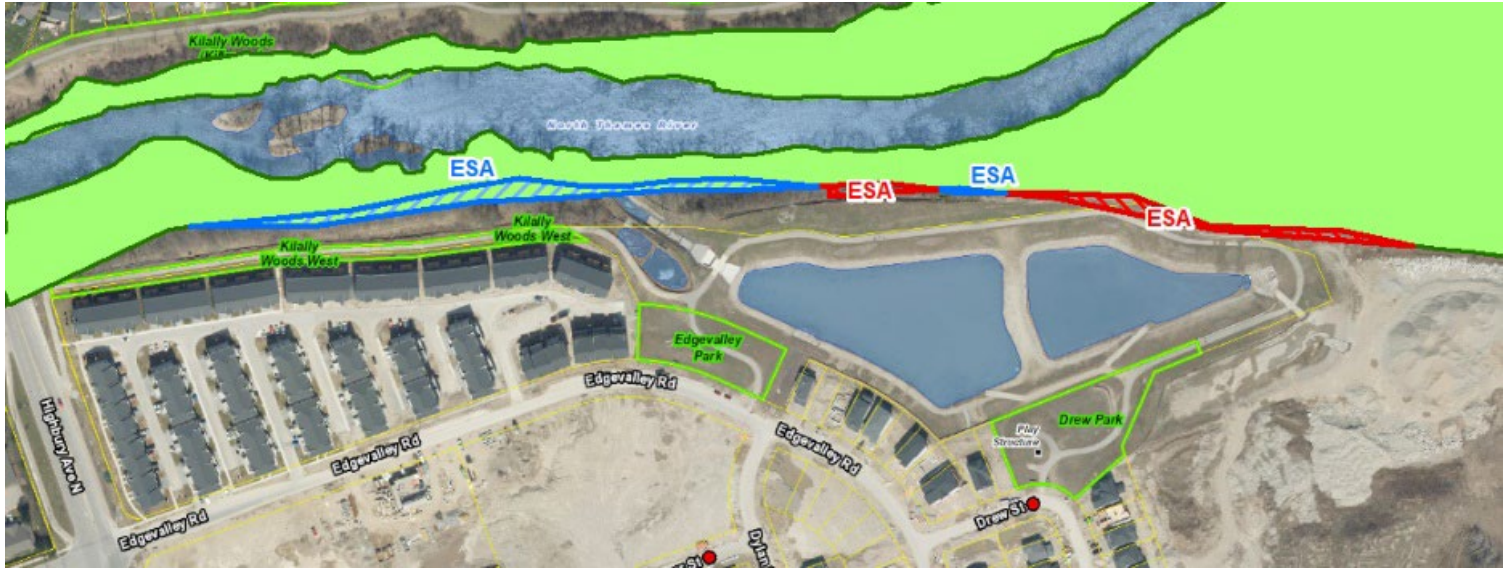


15.401 Sunningdale Road West; Previous Application: 39T-16504
 Removed: Unevaluated Vegetation Patches
 Added: Significant Woodlands

DRAFT



16.401 Sunningdale Road West; Previous Application: 39T-16504
 Removed: Unevaluated Wetland
 Added: Wetlands



17. 1782 Kilally Road; Previous Application: 39T-05505
 Removed: Portions of ESA boundary
 Added: Portions of ESA boundary

DRAFT



18. 1964 Commissioners Road East; Previous Application: 39T-19501
 Removed: Unevaluated Vegetation Patches
 Added: Significant Woodlands



19.3700 Colonel Talbot Road Previous Application: 39T-00510

Added: Floodplain

DRAFT