

LANDSCAPE NOTES:

- ALL WORK TO BE CARRIED OUT IN ACCORDANCE WITH BY-LAWS AND CODES HAVING JURISDICTION OVER SITE
- LOCATION
- COMPLETE ALL WORK TO THE SATISFACTION OF THE LANDSCAPE ARCHITECT
- REPORT ANY CHANGES, DISCREPANCIES OR SUBSTITUTIONS TO THE LANDSCAPE ARCHITECT FOR REVIEW
- OBTAIN APPROVAL FROM THE LANDSCAPE ARCHITECT BEFORE PROCEEDING
- IT IS THE CONTRACTOR'S RESPONSIBILITY TO DETERMINE EXISTING SERVICE LOCATIONS
- EXACT LOCATIONS OF PLANT MATERIAL WILL BE DETERMINED BY PLACEMENT OF SITE SERVICES SUCH AS HYDRO VAULTS, METERS, UTILITIES, ROOF RAIN WATER LEADERS, DRIVEWAYS, LIGHT STANDARDS, ETC.
- ALL PLANT MATERIAL LOCATIONS TO BE STAKED OR MARKED OUT AND APPROVED BY LANDSCAPE ARCHITECT PRIOR TO INSTALLATION
- SUPPLY ALL PLANT MATERIAL IN ACCORDANCE WITH THE CANADIAN STANDARDS FOR NURSERY STOCK (8th Ed.)
- INSTALL PLANT MATERIAL ACCORDING TO DETAILS SHOWN
- DISTURBED SOIL AREAS AROUND TREES AND SHRUBS ARE TO BE COVERED WITH SHREDDED CONIFER BARK MULCH SUCH AS 'CANADA RED' OR 'GRO-BARK' 5PM MULCH, OR APPROVED EQUIVALENT. ALTERNATIVE MULCHES MUST BE APPROVED BY THE LANDSCAPE ARCHITECT
- CONTRACTOR TO UTILIZE LAYOUT DIMENSIONS WHERE PROVIDED
- PROVIDE PLANTING BED AREA AS NOTED ON THE DRAWING OR TO ACCOMMODATE MATURE SIZE OF PLANT MATERIAL
- ALL SUPPORT SYSTEMS MUST BE REMOVED BY THE CONTRACTOR AT TIME OF FINAL ACCEPTANCE. NO EXTRAS WILL BE PAID TO COMPLETE THIS WORK
- SUPPLY AND PLACE TOPSOIL IN ACCORDANCE WITH OPSS 570 TO A MINIMUM DEPTH OF 150mm UNLESS OTHERWISE SPECIFIED
- SUPPLY AND PLACE SOD IN ACCORDANCE WITH OPSS 571 UNLESS OTHERWISE SPECIFIED
- SUPPLY AND PLACE SEED IN ACCORDANCE WITH OPSS 572 UNLESS OTHERWISE SPECIFIED. ALL 5:1 OR GREATER SLOPES TO BE SEED WITH TACKLER. CONTRACTOR TO PROVIDE NECESSARY EROSION CONTROL PROTECTION AS REQUIRED TO ENSURE SOIL STABILIZATION AND PROPER SEED GERMINATION
- ALL DIMENSIONS IN METRES UNLESS OTHERWISE NOTED
- IF DISCREPANCIES ARISE BETWEEN PLANT MATERIAL COUNT SHOWN ON DRAWING AND PLANT LIST, THE DRAWING SHALL BE CONSIDERED CORRECT
- CONTRACTOR TO PROVIDE MINIMUM TWO (2) YEAR WARRANTY FROM DATE ACCEPTED ON ALL WORK UNLESS OTHERWISE SPECIFIED
- ANY SITE PLAN OR GRADING AND SERVICING SHOWN IS FOR INFORMATION ONLY. REFER TO APPROVED DRAWINGS
- NOT FOR CONSTRUCTION UNLESS STAMPED, SIGNED AND DATED BY LANDSCAPE ARCHITECT
- DRAWINGS NOT TO BE REPRODUCED WITHOUT WRITTEN CONSENT FROM LANDSCAPE ARCHITECT
- APPROVAL OF LANDSCAPE PLAN TO BE OBTAINED FROM MUNICIPALITY
- FOR GRADING AND SERVICING INFORMATION REFER TO THE CONSULTING ENGINEERS DRAWINGS
- FOR LIGHTING INFORMATION AND POWER DISTRIBUTION REFER TO THE ELECTRICAL CONSULTANTS DRAWINGS

CLIENT
192 CENTRAL
CITY OF LONDON

COPYRIGHT
This drawing has been prepared solely for the intended use, thus any reproduction or distribution for any purpose other than authorized by Arcadis is forbidden. Written dimensions shall have precedence over scaled dimensions. Contractors shall verify and be responsible for all dimensions and conditions on the job, and Arcadis shall be informed of any variations from the dimensions and conditions shown on the drawing. Shop drawings shall be submitted to Arcadis for general conformance before proceeding with fabrication.

Arcadis Professional Services (Canada) Inc.
is a part of Arcadis

No.	DESCRIPTION	DATE
1	ISSUED FOR 60% DESIGN REVIEW	2022-06-08

KEY PLAN

LEGEND

- TOPSOIL AND SOD AS SPECIFIED MINIMUM 150mm TOPSOIL DEPTH
- CONCRETE PAVING
- PAVESTONE
- PROPOSED DECIDUOUS TREE
- PROPOSED SHRUBS
- PROPOSED PERENNIALS
- PLANT SPECIES QUANTITY
- DETAIL NUMBER SHEET NUMBER

SEAL

CONSULTANT
ARCADIS
410 Albert Street - Suite 101
Waterloo ON N2L 3V3 Canada
tel 519 585 2255
www.arcadis.com

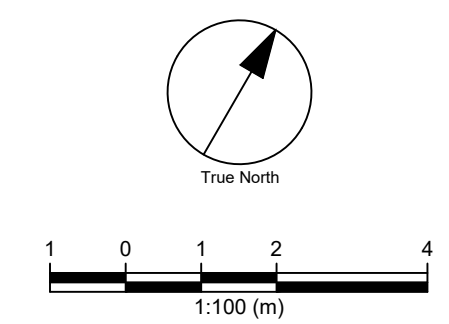
PROJECT
192 CENTRAL
CITY OF LONDON

PROJECT NO: 139153
DRAWN BY: E.L.
PROJECT MGR: M.P.
CHECKED BY: M.P.
APPROVED BY: T.M.

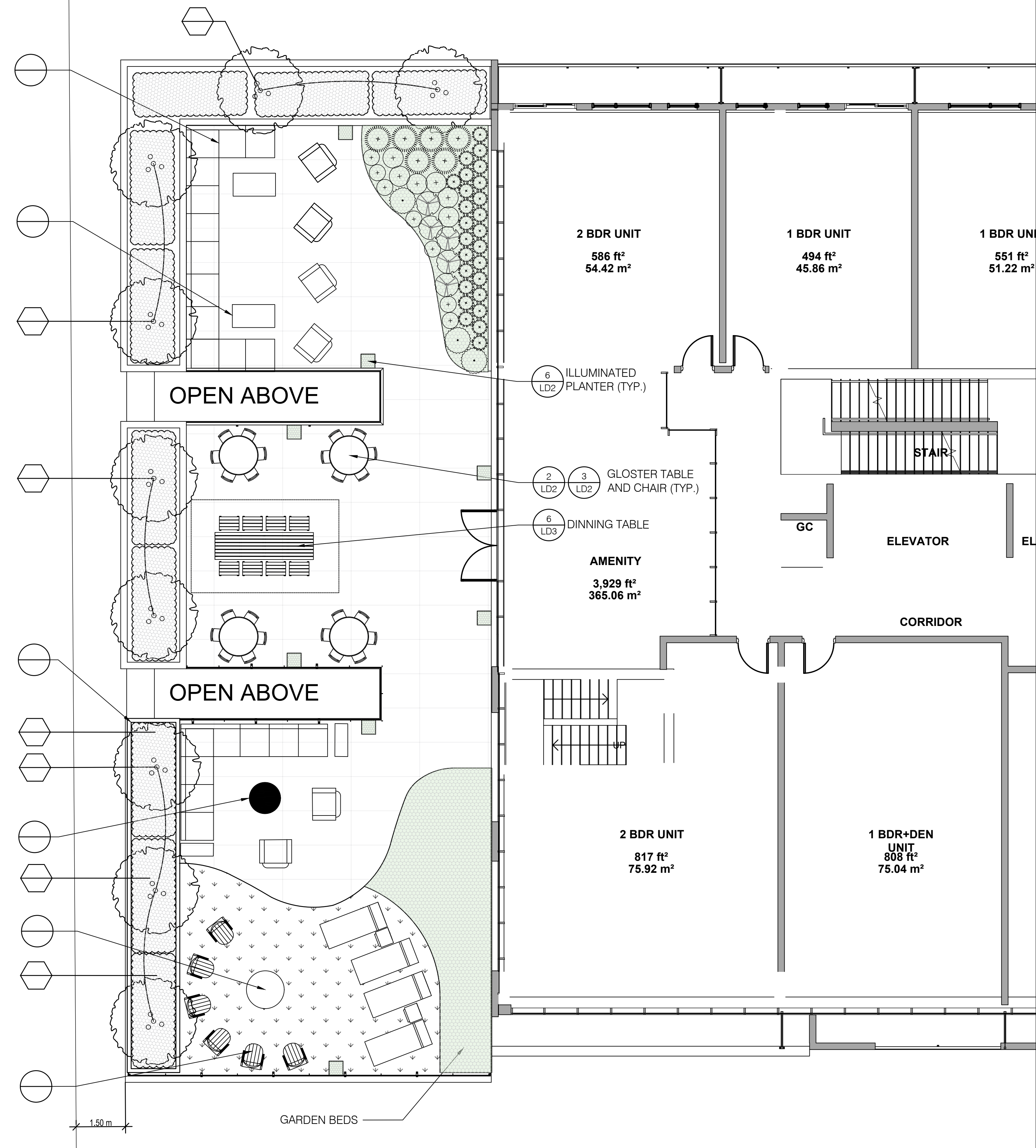
SHEET TITLE
LANDSCAPE PLAN

SHEET NUMBER LP1 **ISSUE** 1

KEY	QTY.	BOTANICAL NAME	COMMON NAME	CALIPER (mm)	SIZE (cm)	CONDITION/FORM	MIN. O.C. SPACING (m)
TREES							
Ag	2	<i>Acer griseum</i>	Paperbark Maple		300	W.B., Clump Form	6
Al	1	<i>Amelanchier laevis</i>	Servceberry	50		W.B., Multistem	6
Cj	3	<i>Cercidiphyllum japonicum</i>	Katsura tree				
SmP	4	<i>Syringa meyeri 'Palibin'</i>	Dwarf Korean Lilac	50		W.B., Standard tree form	6
TOTAL: 10							
PERENNIALS & GRASSES							
CaK	31	<i>Calamagrostis x acutiflora 'Karl Foerster'</i>	Karl forester grass			1 Gal.	0.5
Dm	120	<i>Dianthus X 'Barbatus' Midget Mx'</i>	Sweet William			1 Gal.	0.3
DxC	110	<i>Dianthus X 'Classic Coral'</i>	Sweet William			1 Gal.	0.3
DxE	70	<i>Dianthus X 'Early Bird Frosty'</i>	Sweet William			1 Gal.	0.3
LsS	155	<i>Leucanthemum x 'superbum' 'Snowcap'</i>	Shasta Daisy			1 Gal.	0.3
MzS	15	<i>Miscanthus sinensis 'Zebrinus'</i>	Zebra Grass			1 Gal.	0.5
TOTAL: 501							



File Location: \\139153_192-196_Cent7_0_Production\7_03_Design\05_Landscape\Sheets\139153_LP1.dwg
 Plot Date: August 3, 2023, 9:43:55 AM by Connor Winrow
 P10861

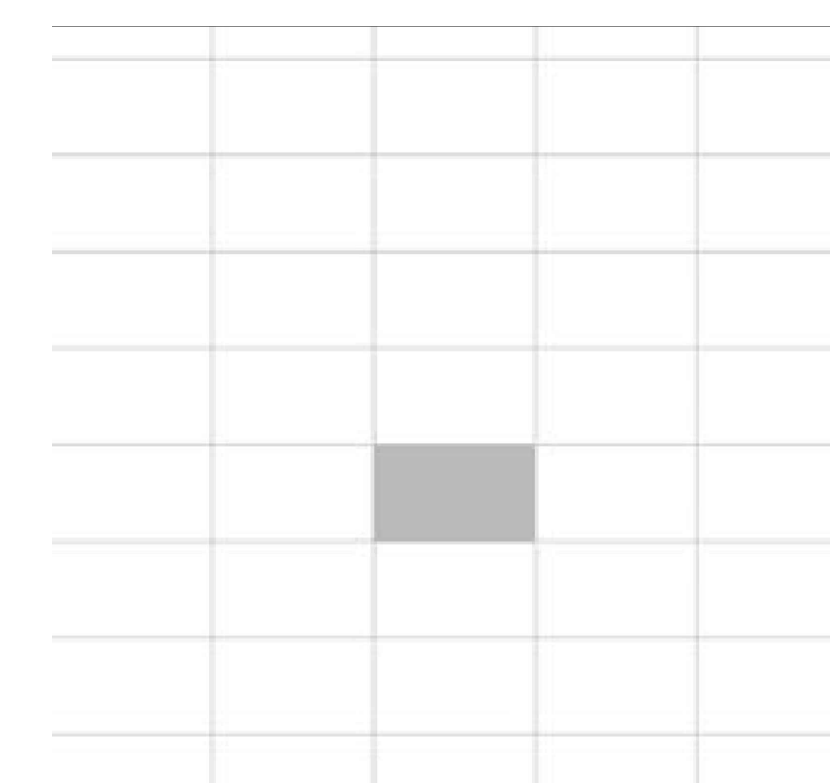


PLANT SCHEDULE:

KEY	QTY.	BOTANICAL NAME	COMMON NAME	CALIPER (mm)	SIZE (cm)	CONDITION/FORM	MIN. O.C. SPACING (m)
TREES							
Ag	2	<i>Acer griseum</i>	Paperbark Maple		300	W.B., Clump Form	6
Al	1	<i>Amelanchier lancea</i>	Serviceberry	50		W.B., Multistem	6
Cj	3	<i>Cercidiphyllum japonicum</i>					
SmP	4	<i>Syringa meyeri 'Palibin'</i>	Dwarf Korean Lilac	50		W.B., Standard tree form	6
TOTAL:	10						

TBD

KEY	QTY.	BOTANICAL NAME	COMMON NAME	CALIPER (mm)	SIZE (cm)	CONDITION/FORM	MIN. O.C. SPACING (m)
PERENNIALS & GRASSES							
CaK	31	<i>Calamagrostis x acutiflora 'Karl Foerster'</i>	Karl foerster grass			1 Gal.	0.5
Dtm	120	<i>Dianthus X Barbatus 'Widjet Mix'</i>	Sweet William			1 Gal.	0.3
DxC	110	<i>Dianthus X Classic 'Coral'</i>	Sweet William			1 Gal.	0.3
DxE	70	<i>Dianthus X Early Bird 'Frosty'</i>	Sweet William			1 Gal.	0.3
LsS	155	<i>Leucanthemum x superbum 'Snowcap'</i>	Shasta Daisy			1 Gal.	0.3
MsZ	15	<i>Miscanthus sinensis 'Zebra'</i>	Zebra Grass			1 Gal.	0.5
TOTAL:	501						

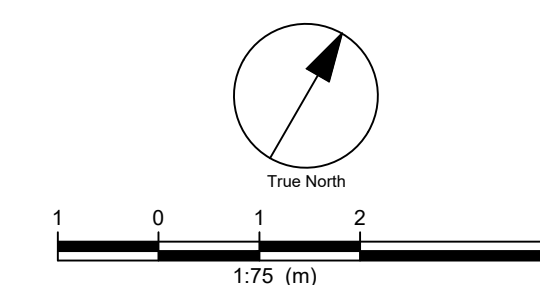


Linear laying pattern 01 for Blu Grande slabs



Item Size Description: 500 X 750 mm

1 TERRACE SURFACING DETAIL (PRECAST PAVERS)
LP2 N.T.S.



CLIENT
192 CENTRAL

CITY OF LONDON

COPYRIGHT

This drawing has been prepared solely for the intended use, thus any reproduction or distribution for any purpose other than authorized by Arcadis is forbidden. Written dimensions shall have precedence over scaled dimensions. Contractors shall verify and be responsible for all dimensions and conditions on the job, and Arcadis shall be informed of any variations from the dimensions and conditions shown on the drawing. Shop drawings shall be submitted to Arcadis for general conformance before proceeding with fabrication.

Arcadis Professional Services (Canada) Inc.
is a part of Arcadis

ISSUES

No.	DESCRIPTION	DATE
1	ISSUED FOR 60% DESIGN REVIEW	2022-08-02

KEY PLAN

LEGEND

- TOPSOIL AND SOD AS SPECIFIED
MINIMUM 150mm TOPSOIL DEPTH
- CONCRETE PAVING
- PAVESTONE
- PROPOSED DECIDUOUS TREE
- PROPOSED SHRUBS
- PROPOSED PERENNIALS
- PLANT SPECIES QUANTITY
- DETAIL NUMBER SHEET NUMBER

SEAL

CONSULTANT

ARCADIS
410 Albert Street - Suite 101
Waterloo ON N2L 3V3 Canada
tel 519 585 2255
www.arcadis.com

PROJECT

192 CENTRAL

CITY OF LONDON

PROJECT NO:
139153

DRAWN BY:
E.L.

CHECKED BY:
M.P.

PROJECT MGR:
M.P.

APPROVED BY:
T.M.

SHEET TITLE

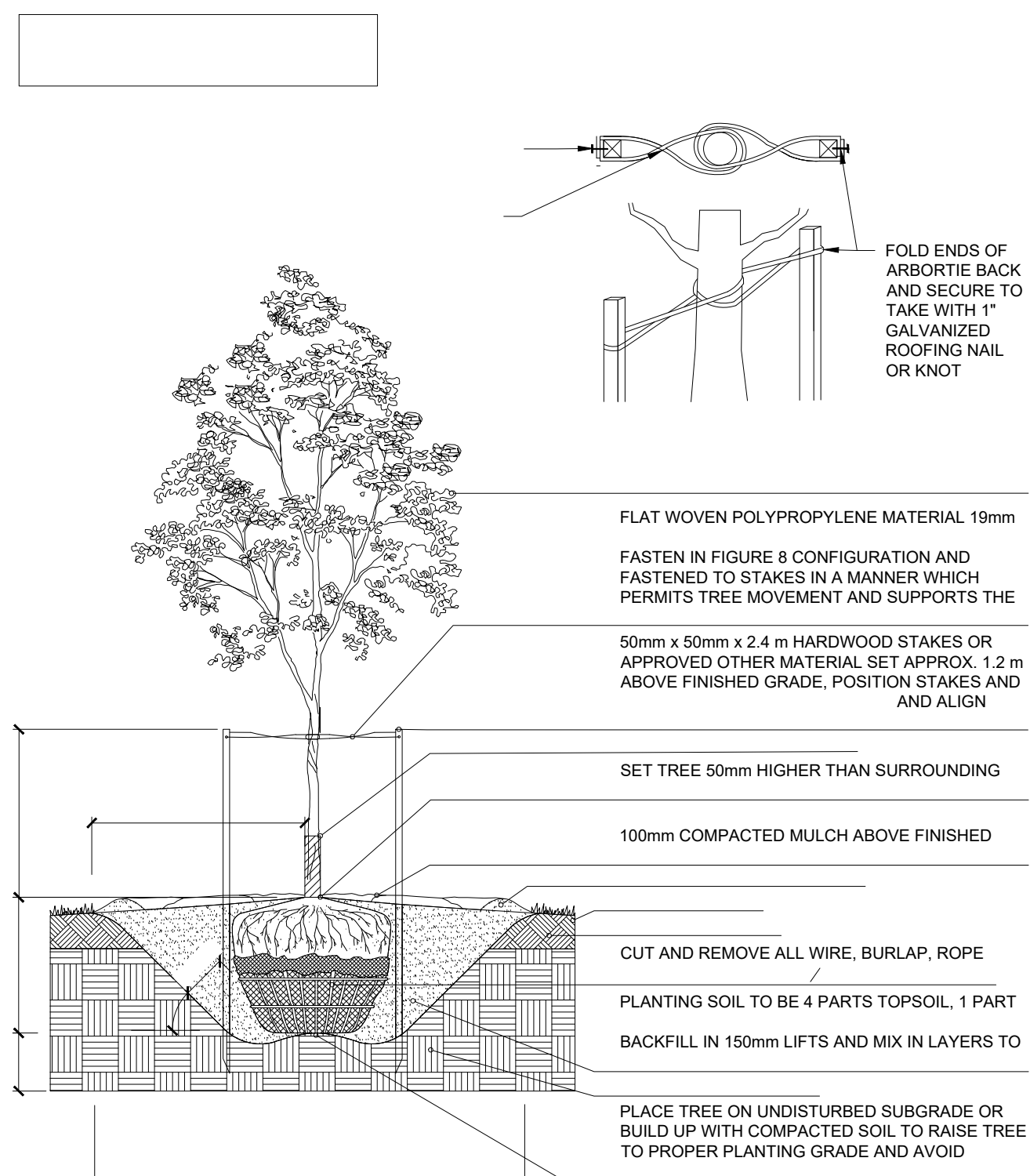
ROOFTOP PLAN

SHEET NUMBER

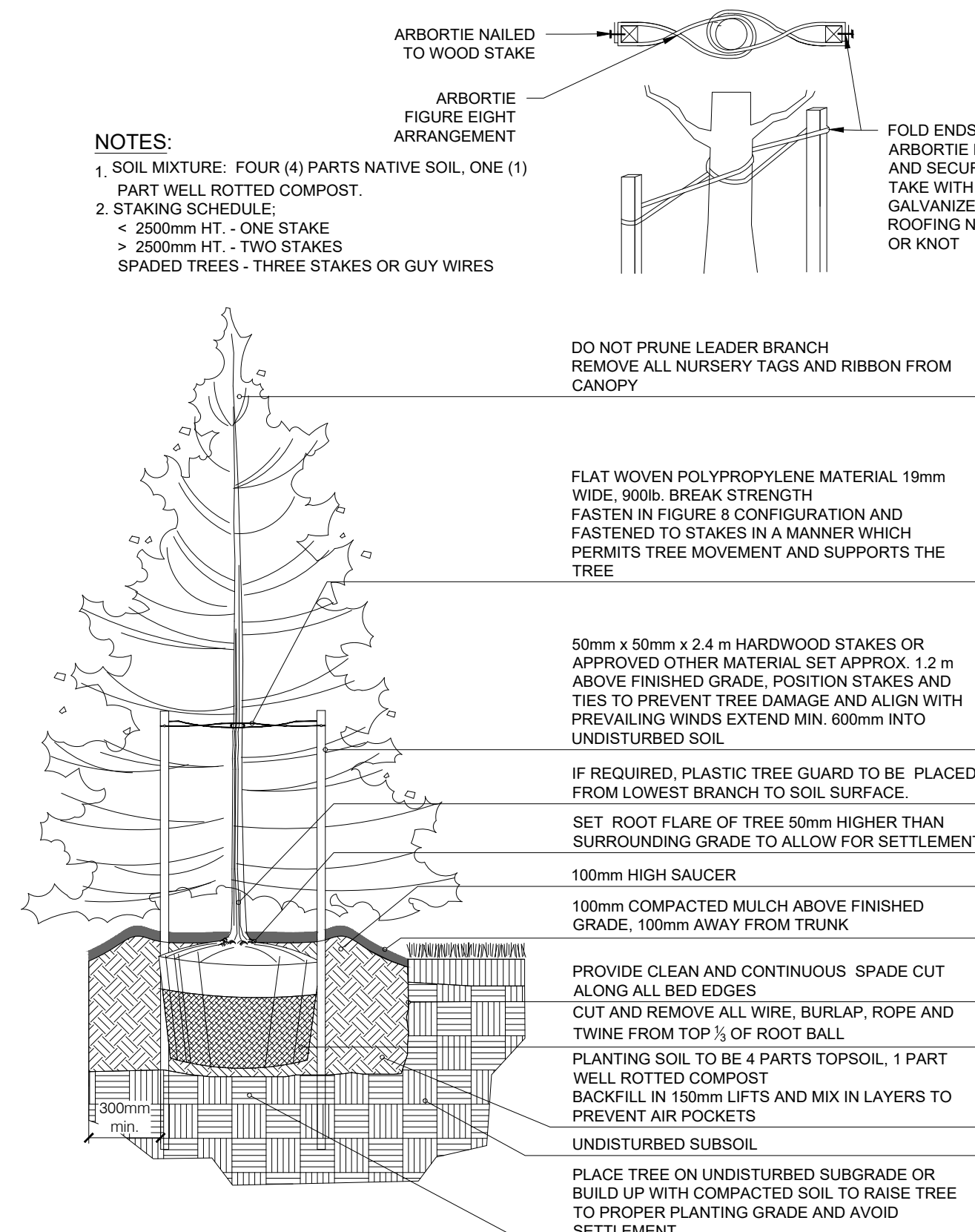
LP2

ISSUE

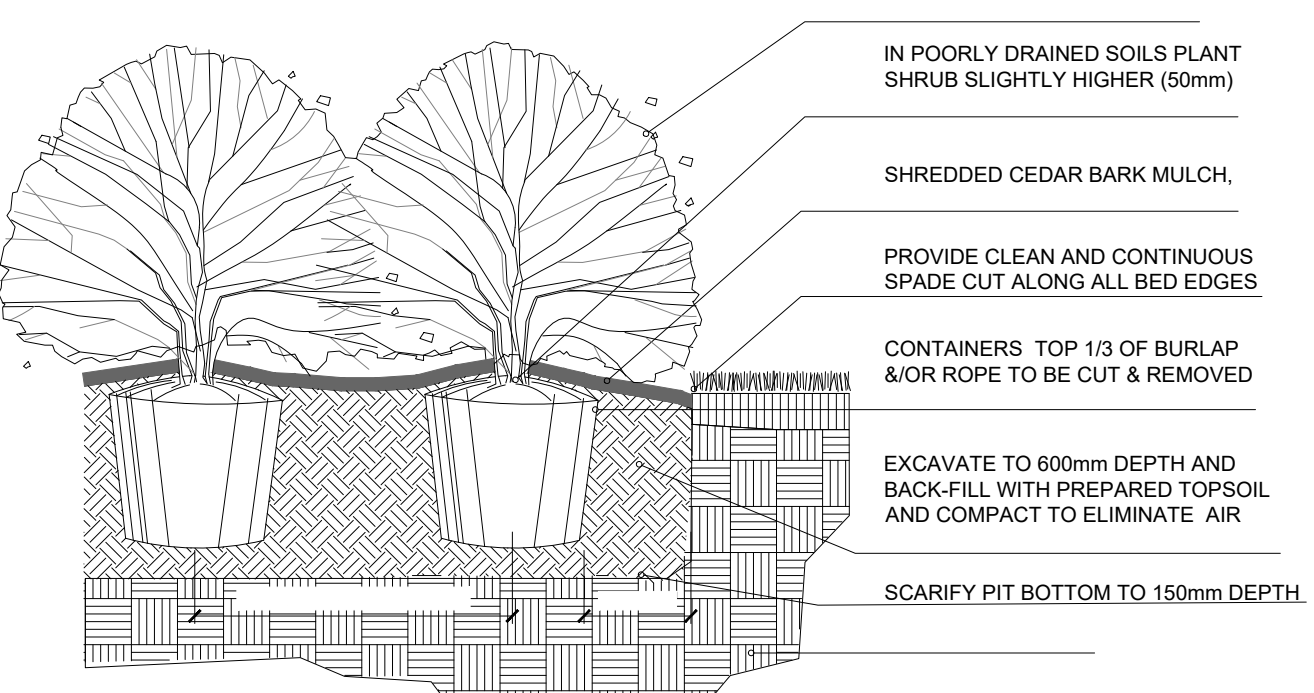
1



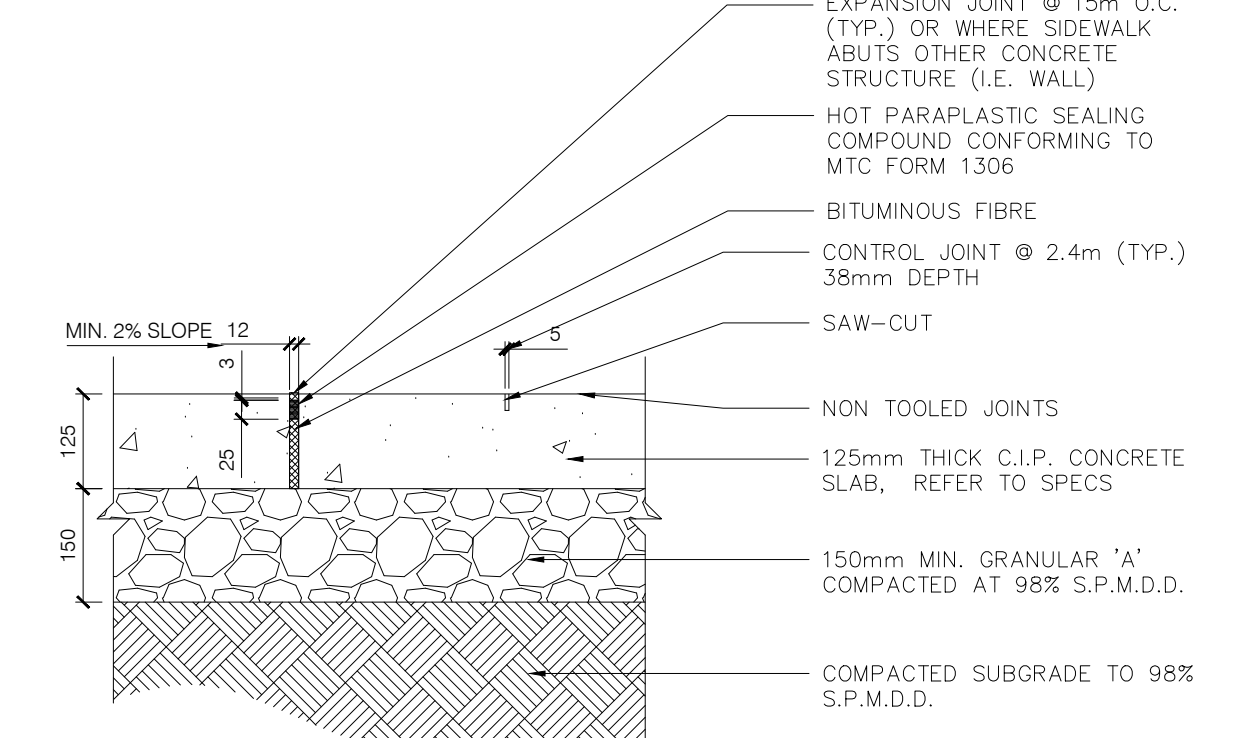
3 BALLED & BURLAPPED/WIRE BASKET DECIDUOUS/CONIFEROUS TREE



4 BALLED & BURLAPPED/WIRE BASKET CONIFEROUS TREE N.T.S.



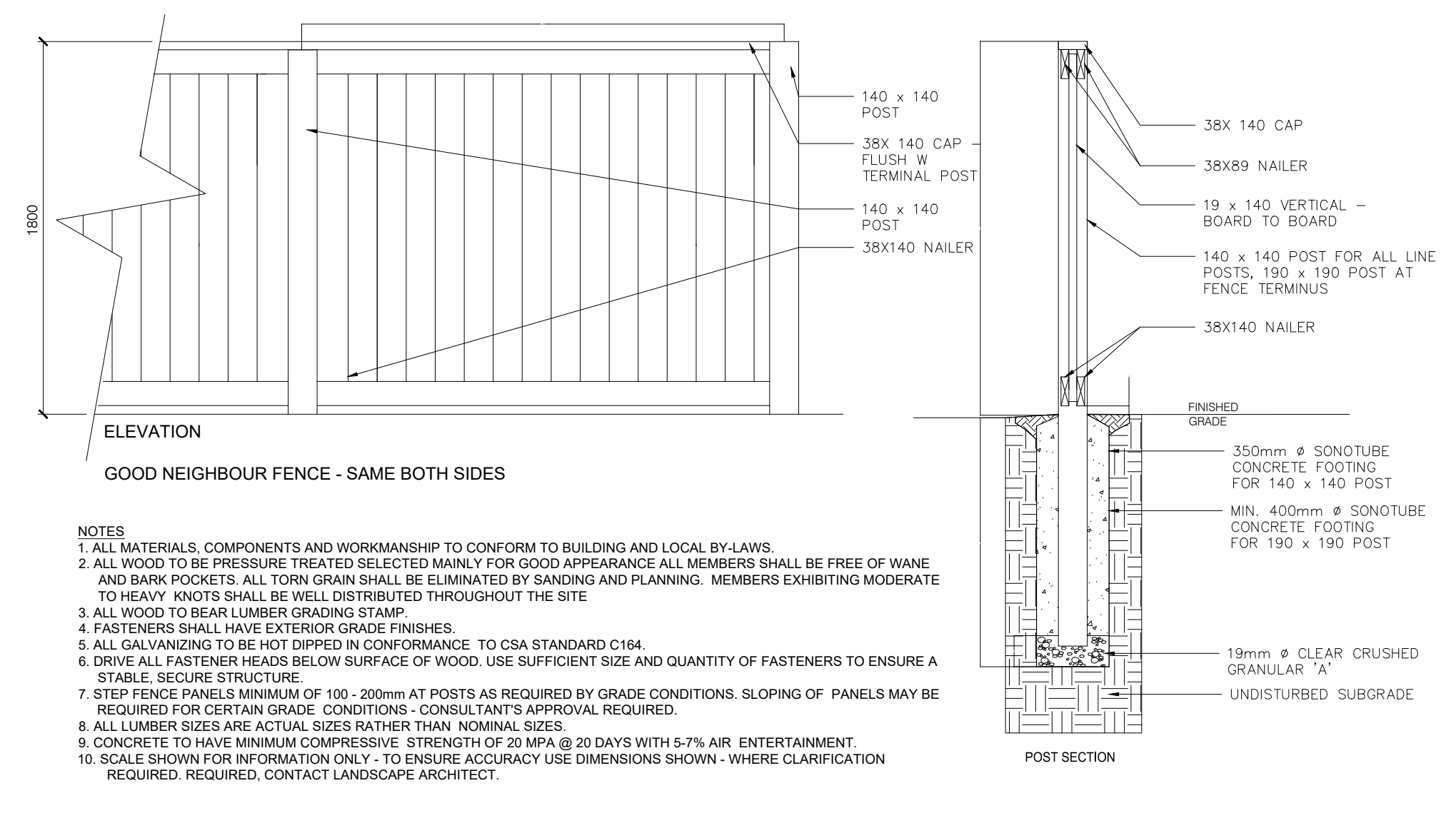
5 UNIT PAVING ON GRANULAR BASE (TYPE 2) N.T.S.



6 C.I.P. CONC. SIDEWALK N.T.S.

- GENERAL NOTES**
- Any ambiguity in the drawings, specifications or details are to be reported to the Landscape Architect for direction. These drawings shall not be used for construction unless stamped and signed by the Landscape Architect. The Contractor is not to proceed in uncertainty. The limits of work are to be clearly understood by the Contractor prior to any work taking place on the site.
 - All dimensions are in meters unless otherwise noted. The drawings may be scaled for approximate layout. The Contractor is to verify all dimensions on the drawing(s) and report any discrepancies to the Landscape Architect.
 - The Contractor is to locate and mark all infrastructure and utilities prior to any excavation work or planting on the site. Do not plant directly above underground utilities or infrastructure unless approved by the Landscape Architect. Dig all holes by hand when closer than 1.0m to any underground power, telephone or gas utility. The Contractor is responsible for the coordination and maintenance of all utility/infrastructure located for the duration of the Contract.
 - The Contractor shall supply all materials in quantities sufficient to complete work shown on these drawings. The Contractor is not to substitute materials, products or quantities without prior written consent of the Landscape Architect.
 - The Contractor is to take all necessary precautions to protect all existing site features unless specified for removal/demolition. This includes all survey bars, stakes, monuments and sediment barriers. The Contractor is responsible for any damages incurred during construction and must make all necessary restorations and repairs to original or better condition.
 - All existing trees, shrubs, and herbaceous plants beyond the limit of work are to be protected from construction damage. This includes but is not limited to: not storing construction materials or fuel within the dripline of an existing tree, not altering existing grades or compacting soil around protected vegetation and taking care not to disturb or expose the roots of any existing trees. The Contractor is responsible for all protection or hoarding measures of all existing trees and vegetation to be preserved within or adjacent to construction work limits.
 - Contractor is responsible for the removal of all debris, garbage and surplus materials on site related to their contract or work and must keep the site in a clean, safe, useable condition at all times or as directed by the Contract Administrator.

- PLANTING NOTES**
- The Contractor must notify the Landscape Architect prior to the commencement of any planting. The Contractor shall supply all plants and materials in quantities sufficient to complete the work shown on this drawing. Any discrepancies between quantities shall be reported to the Landscape Architect.
 - All landscape works will be warranted for a period of two years following inspection and written notice of start of warranty period as determined and provided by the Landscape Architect. Plant material, which is not in a healthy, vigorous growing condition at the end of the warranty period, shall be replaced to the satisfaction of the Landscape Architect / Owner.
 - The Landscape Architect reserves the right to extend Contractor's warranty responsibilities for an additional year if, at the end of initial warranty period, leaf development and growth is not sufficient to ensure future survival as determined by the Landscape Architect.
 - The Contractor is to identify with Landscape Architect/Owner any maintenance requirements necessary for warranty purposes.
 - Plant materials specified for this project will conform to the Canadian Nursery Landscape Association (C.N.L.A.) for size, variety and condition as indicated on the plant schedule shown on these drawings. Any plant materials which do not conform will be promptly removed from the site and replaced by the Contractor at no additional cost to the project.
 - The Landscape Architect is to be contacted for inspection and written approval prior to plant material arriving on site. The Landscape Architect reserves the right to reject any plant materials that have not been inspected and approved.
 - The Landscape Architect reserves the right to refuse acceptance of any plant displaying poor growth habits, injury or disease. Any plant material that is rejected by the Landscape Architect will be promptly removed from the site and replaced with material of acceptable quality at no additional charge to the project.
 - Plant materials collected from wild sources will not be accepted without written approval of the Landscape Architect. The Landscape Architect reserves the right to require that supplier invoices be submitted for inspection and approval prior to acceptance.
 - On-site layout of the plant materials to be approved by the Landscape Architect prior to installation. Minor field adjustments to plant material locations may be necessary to respond to the locations of existing plants and site conditions. The Contractor to review with Landscape Architect where relocations are necessary. The Contractor must receive approval from Landscape Architect prior to installation.
 - Plants are not to be installed during extreme heat, drought, or other undesirable conditions. Thoroughly water all plants immediately after installation. The Contractor shall regularly monitor site conditions and water as required to ensure healthy growth conditions throughout the duration of the warranty period.
 - Do not plant directly in centerline of drainage swales or depression areas. Where proposed planting locations conflict with constructed swales or low-lying wet areas, contact Landscape Architect for direction.
 - All plants are to be planted in accordance with the planting details shown on this drawing. All plants are to be installed vertical and plumb, regardless of ground slope.
 - Supply and place topsoil in accordance with OPSS 802 to a minimum depth of 150mm in seed/sod areas and 600mm in planting beds unless otherwise specified. Each source of topsoil, imported or native to be approved by Landscape Architect prior to use. Submit topsoil analysis/test results to Landscape Architect prior to order or delivery to site. Testing to be in accordance with Contract specifications. Prepared topsoil shall be 4 parts topsoil to one part well-rotted compost.
 - Mulch: to be spread uniformly around the base of trees and shrubs to a minimum depth of 100 mm. Do not place mulch in direct contact with trunk or stem(s). Allow a 100 mm mulch free zone at trunk/stems. Shrubs to be in continuously mulched planting beds unless otherwise specified.
 - Supply and place seed in accordance with OPSS 804 unless otherwise specified. All 5:1 or greater slopes to be seeded with tackifier. All slopes greater than 3:1 shall be matted with an erosion control blanket. Supply and place sod in accordance with OPSS 803 unless otherwise specified.
 - The Contractor is to remove dead or damaged branches on trees or shrubs. All pruning shall be performed in accordance with standard horticultural practices and appropriate timing for each species.
 - All stakes and associated ties are to be removed after the first full growing season. Rodent guards are to be removed at the conclusion of the warranty period. If utilized, Gatorbags are to be removed for winter months.



7 1.8m HIGH WOODEN PRIVACY FENCE N.T.S.

CLIENT
192 CENTRAL
CITY OF LONDON

COPYRIGHT
This drawing has been prepared solely for the intended use, thus any reproduction or distribution for any purpose other than authorized by Arcadis is forbidden. Written dimensions shall have precedence over scaled dimensions. Contractors shall verify and be responsible for all dimensions and conditions on the job, and Arcadis shall be informed of any variations from the dimensions and conditions shown on the drawing. Shop drawings shall be submitted to Arcadis for general conformance before proceeding with fabrication.

Arcadis Professional Services (Canada) Inc.
a part of Arcadis

ISSUES	No.	DESCRIPTION	DATE
	1	ISSUED FOR 60% DESIGN REVIEW	2022-06-08

KEY PLAN

SEAL

CONSULTANT
ARCADIS
410 Albert Street - Suite 101
Waterloo ON N2L 3V3 Canada
tel 519 585 2255
www.arcadis.com

PROJECT
192 CENTRAL
CITY OF LONDON

PROJECT NO:
139153

DRAWN BY: E.L.	CHECKED BY: M.P.
PROJECT MGR: M.P.	APPROVED BY: T.M.

SHEET TITLE
LANDSCAPE DETAILS

SHEET NUMBER LD1	ISSUE 1
----------------------------	-------------------

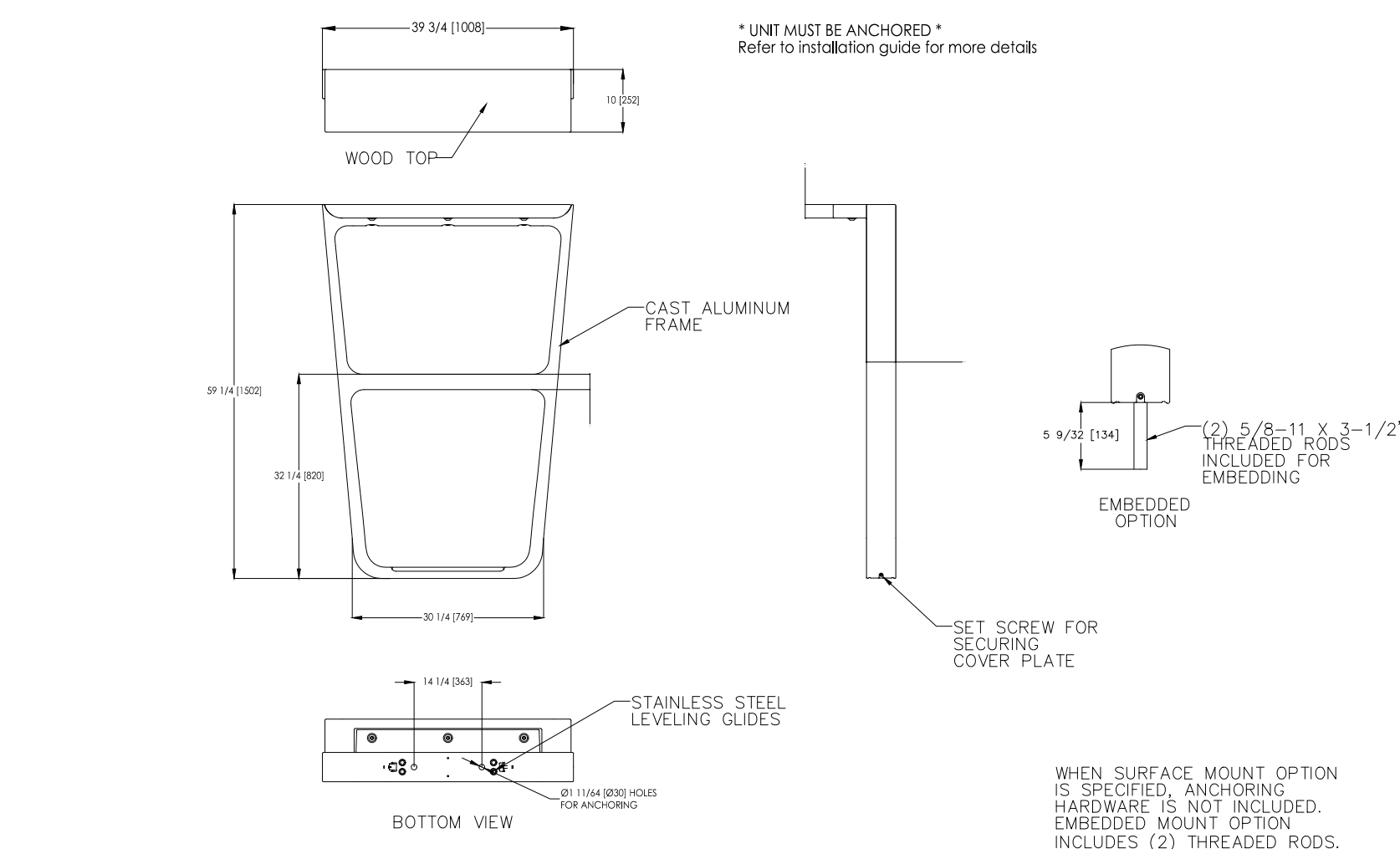
File Location: \\1139153_192-199_CentR7_0_Production\7_03_Design\05_Landscape\Sheet\139153_LP.dwg
Last Saved: August 3, 2023 9:44:14 AM by Connor Wiroaw
Printed: Thursday, August 3, 2023 9:44:14 AM by Connor Wiroaw

Prairie Bench
PS-850-AL-WD3-WD3-A-WD3 - 6' Prairie Bench

Our 'Prairie' bench features an all-welded aluminum, powdercoated frame with 'ipe' tropical wood slats. Available in a variety of sizes and finishes, freestanding or bolt-down.



Width: 72" (182.9 cm)
Depth: 27" (68.6 cm)
Height: 34" (86.4 cm)
Seat Height: 18.25" (46.4 cm)
Arm Height: 26" (66.0 cm)
Weight: 87.6 lb (39.5 kg)



landscapiforms Drawing: FU10001 Dimensions are in inches (mm) U.S. Patent No. D710,783
CONFIDENTIAL DRAWING INFORMATION CONTAINED HEREIN IS THE PROPERTY OF LANDSCAPE FORMS, INC. INTENDED USE IS LIMITED TO DESIGN PROFESSIONALS' SPECIFYING LANDSCAPE FORMS, INC. PRODUCTS AND THEIR DIRECT CLIENTS. DRAWING IS NOT TO BE COPIED OR DISCLOSED TO OTHERS WITHOUT THE CONSENT OF LANDSCAPE FORMS, INC. ©2014 LANDSCAPE FORMS, INC. ALL RIGHTS RESERVED.

17" Tapered Illuminated Planter
HSTW75 - Tapered Illuminated Planter



Width: 13" (33.0 cm)
Depth: 13" (33.0 cm)
Height: 17" (43.2 cm)
Total Capacity: 4.2 gal (15.9 L)



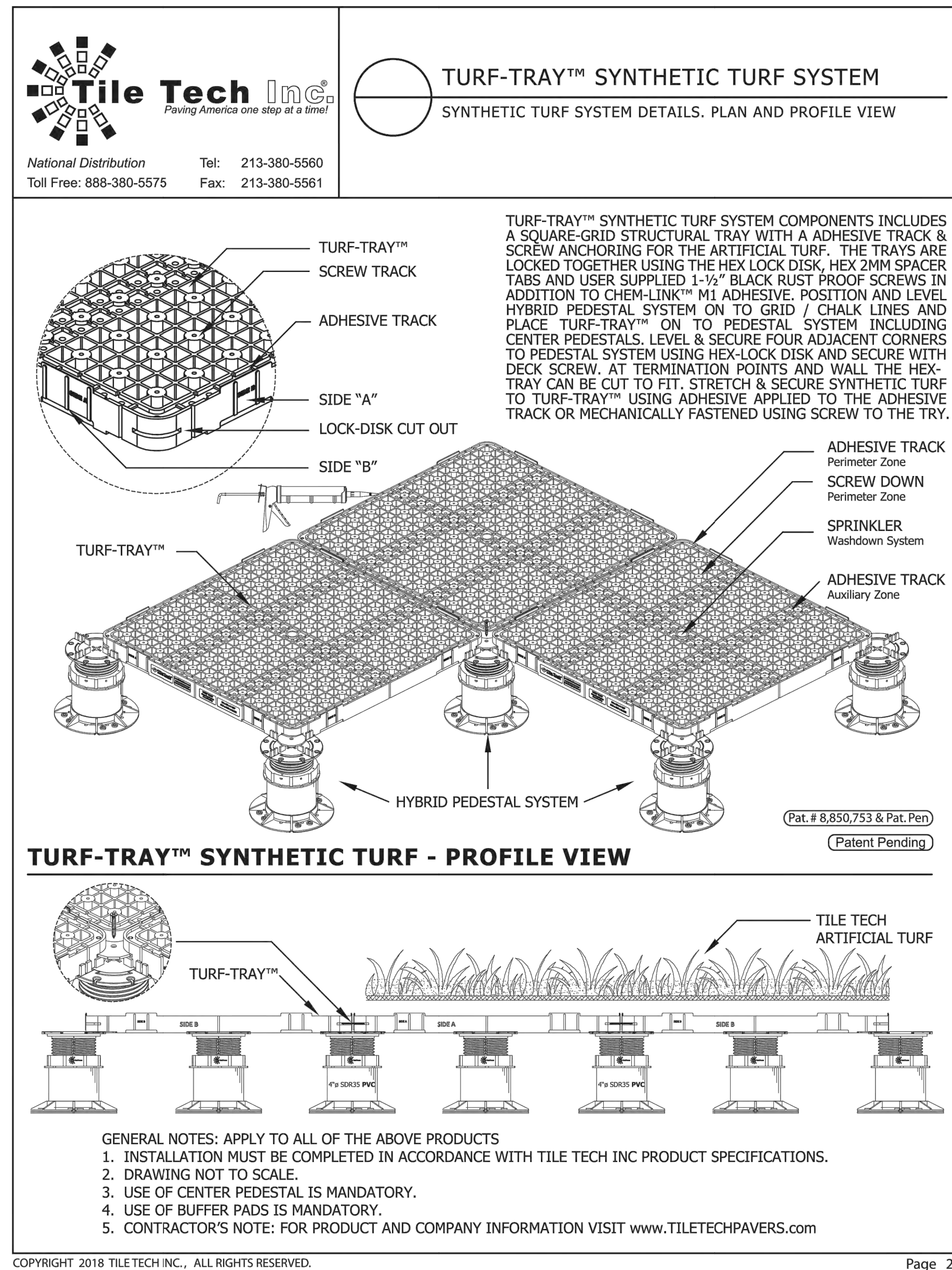
4 BIKE RACK (MultipliCITY Bike Rack BY LANDSCAPEFORMS)
LD2 N.T.S.

6 17" TAPERED ILLUMINATED PLANTER BY HAUSER
LD2 N.T.S.



DIAMETER: 150cm / 59"
HEIGHT: 74cm / 29"
PRODUCT WEIGHT: 65kg / 143lb
CBM / CCF: 0.58m³ / 20.58"
DESIGNER: Henrik Pedersen
ASSEMBLY: Required
SEATING CAPACITY: 6

ITEM NUMBER: 102264 - Task 59" Round Dining Table
MATERIALS: Natural finish teak frame & slatted teak table top. Without parasol hole.
ACCESSORIES: 107105 - Protective Cover
WARRANTY / MAINTENANCE: See glister.com for warranty terms & maintenance instructions.



5 ARTIFICIAL TURF
LD2 N.T.S.



7 CUSTON CONFERENCE TABLE PROVIDED BY TEKNION
LD2 N.T.S.



WIDTH: 60cm / 23.5"
DEPTH: 55cm / 21.5"
HEIGHT: 80cm / 31.5"
SEAT HEIGHT: 47cm / 18.5"
ARM HEIGHT: 64cm / 25"
PRODUCT WEIGHT: 7kg / 15lb
CBM / CCF: 0.33m³ / 11.93ft³
DESIGNER: Mark Gabbertas
ASSEMBLY: Not Required

ITEM NUMBER: 102270 - Dining Chair with Arms
MATERIALS: Powder coated stainless steel frame. Natural finish teak seat & back.
ACCESSORIES: 107107 - Protective Cover
107568 - Seat & Cushion (Outdoor Performance Fabric)
107569 - Seat & Cushion (Water Resistant Fabric)
WARRANTY / MAINTENANCE: See glister.com for warranty terms & maintenance instructions.

CLIENT		192 CENTRAL
CITY OF		LONDON
COPYRIGHT		
This drawing has been prepared solely for the intended use, thus any reproduction or distribution for any purpose other than authorized by Arcadis is forbidden. Written dimensions shall have precedence over scaled dimensions. Contractors shall verify and be responsible for all dimensions and conditions on the job, and Arcadis shall be informed of any variations from the dimensions and conditions shown on the drawing. Shop drawings shall be submitted to Arcadis for general conformance before proceeding with fabrication.		
Arcadis Professional Services (Canada) Inc. <small>is a part of Arcadis</small>		
ISSUES		
No.	DESCRIPTION	DATE
1	ISSUED FOR 60% DESIGN REVIEW	2022-06-08
KEY PLAN		
SEAL		
CONSULTANT		
<p>410 Albert Street - Suite 101 Waterloo ON N2L 3V3 Canada tel 519 585 2255 www.arcadis.com</p>		
PROJECT		
192 CENTRAL		
CITY OF LONDON		
PROJECT NO: 139153		
DRAWN BY: E.L.	CHECKED BY: M.P.	
PROJECT MGR: M.P.	APPROVED BY: T.M.	
SHEET TITLE		
LANDSCAPE DETAILS		
SHEET NUMBER	LD2	ISSUE
		1

Veranda Sectional Corner Chair, Driftwood

CHSPR8003-DW-WT - Veranda Sectional Corner Chair
Our Veranda Sectional Corner chair features an all-welded, powdercoated tubular aluminum frame, and is hand woven in Hauser Weather Resistant Wicker. The variegated synthetic fibre used is unmatched for its high grade flexibility, strength, UV and weather resistance. Our Hauser Weather Resistant Wicker combines modern day technology with classic styling to create the ultimate furniture for commercial use. Shown here with our Driftwood (DW) frame. (Weighted for commercial use)



Width: 32.5" (82.6 cm)
Depth: 32.5" (82.6 cm)
Height: 28" (71.1 cm)
Seat Height: 18" (45.7 cm)
Cushions: Reversible



27" Skyline II Bar Table

PS-1040-AL-27X27-42-WT - Skyline II Bar Table
Our Skyline II Bar Table features an all welded aluminum, powdercoated frame, and is shown here with an aluminum slat table top. Available in a variety of finishes, freestanding or bolt-down. Weighted for commercial use.



Width: 27" (68.6 cm)
Depth: 27" (68.6 cm)
Height: 42" (106.7 cm)



Monterey Counter Stool

GS-4310-AL Monterey
Our 'Monterey' counter stool features an all-welded aluminum frame, and is shown here with an 'ipe' tropical wood slat seat, and our 'Pewter' powdercoat finish.



Width: 17" (43.2 cm)
Depth: 22" (55.9 cm)
Height: 40" (101.6 cm)
Seat Height: 24.5" (62.2 cm)

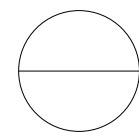


48" Rectangular Firepit

CHSDK003 - Rectangular Firepit
Our Rectangular Firepit embodies the highest level of quality, design and Canadian craftsmanship. The proprietary material is less than half the weight of regular concrete. Strength and durability are uncompromised, rendering a product that is weather resistant, and able to take extreme heat and cold, all while achieving a striking resemblance of real stone. Includes weather cover, protective glass surrounds and is available with either Propane or Natural Gas connections. Standard Manual Ignition. Electric Start Ignition available as a premium (overall height increases to 16" with this option). Weight listed below does not include decorative rock or protective glass surround.
CSA / UL Approved



Width: 48" (121.9 cm)
Depth: 26" (66.0 cm)
Height: 15" (38.1 cm)
Weight: 145.0 lb (65.8 kg)



2 HAUSER SKYLINE II BAR TABLE
LD3 N.T.S.

3 HAUSER MONTEREY COUNTER STOOL
LD3 N.T.S.

4 HAUSER 48" RECTANGULAR FIREPIT
LD3 N.T.S.

60" Rectangular Firepit

CHSDK003 - Rectangular Firepit
Our Rectangular Firepit embodies the highest level of quality, design and Canadian craftsmanship. The proprietary material is less than half the weight of regular concrete. Strength and durability are uncompromised rendering a product that is weather resistant, and able to take extreme heat and cold, all while achieving a striking resemblance of real stone. Includes weather cover, protective glass surrounds and is available with either Propane or Natural Gas connections. Standard Manual Ignition. Electric Start Ignition available as a premium (overall height increases to 16" with this option).



Width: 60" (152.4 cm)
Depth: 26" (66.0 cm)
Height: 15" (38.1 cm)



Cabana Lounge Chair

CHS8502-WT - Cabana Lounge Chair
The Cabana Lounge Chair features a curvaceous all-welded tubular aluminum frame, with strong horizontal lines (weighted for commercial use). It is available in any HauserKOTE powdercoat finish, with upholstery in any standard Hauser acrylic fabric, or GOM. Shown here with our 'Gunmetal' powdercoat finish, and 'Spectrum Dove' acrylic fabric.



Width: 34" (86.4 cm)
Depth: 31" (78.7 cm)
Height: 29" (73.7 cm)
Seat Height: 17.5" (44.5 cm)
Cushions: Reversible



Cabana Coffee Table

CHS8511-WT - Cabana Coffee Table
The Cabana Coffee Table features a curvaceous all-welded tubular aluminum frame and a slatted aluminum table top (weighted for commercial use). It is available in any HauserKOTE powdercoat finish, and is shown here with our 'Gunmetal' finish.



Diameter: 42" (106.7 cm)
Height: 16.5" (41.9 cm)
Weight: 36.0 lb (16.3 kg)

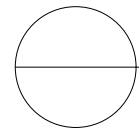


Garden Bowl Firepit

CHSDK001-18 - Garden Bowl Firepit
Our Garden Bowl Firepit embodies the highest level of quality, design and Canadian craftsmanship. The proprietary material is less than half the weight of regular concrete. Strength and durability are uncompromised, rendering a product that is weather resistant, and able to take extreme heat and cold, all while achieving a striking resemblance of real stone. Includes weather cover and glass surround. Available with either Propane or Natural Gas connections. Standard Manual Ignition. Electric Start Ignition available as a premium. Weight provided below does not include decorative rock.



Diameter: 32" (81.3 cm)
Height: 15.5" (39.4 cm)
Weight: 90.0 lb (40.9 kg)



6 CABANA LOUNGE CHAIR
LD3 N.T.S.

7 CABANA COFFEE TABLE
LD3 N.T.S.

8 Garden Bowl Firepit - CHSDK001-18 - Garden Bowl Firepit
LD3 N.T.S.

Gloster Dansk End Table

HSTK6470 - Dansk End Table
The Dansk End Table strikes a familiar chord with its clean, tapering lines that reflect a classic Danish furniture design. Featuring an 'Acrylic Stone' table top, and teak frame. Special order only.



Diameter: 19.5" (49.5 cm)
Height: 15.5" (39.4 cm)



Maine Adirondack Chair

HCSC-280 - Maine Adirondack Chair
The Maine Adirondack Chair is constructed of 100% recycled plastics, and is UV stabilized to prevent fading. This modern outdoor furniture is virtually maintenance free, and will not crack, split, rot or splinter. Available in a wide array of colour choices.



Width: 31.5" (80.0 cm)
Depth: 36.5" (92.7 cm)
Height: 36.5" (92.7 cm)
Seat Height: 14" (35.5 cm)
Arm Height: 22" (55.9 cm)
Weight: 49.0 lb (22.2 kg)

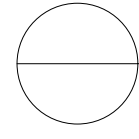


Quantum Coffee Table With Enviro-Wood Slats

CHS8106-EW-40.5-12
The Quantum Coffee Table features a sleek all-welded aluminum frame, with Enviro-wood Slats. It is available in any HauserKOTE powdercoat finish. Shown here with our 'GUNMETAL' powdercoat finish.



Width: 40.5" (102.9 cm)
Height: 12.5" (31.8 cm)
Weight: 46.0 lb (20.9 kg)



10 HAUSER LOUNGE CHAIR (GREEN)
LD3 N.T.S.

11 QUANTUM COFFEE TABLE
LD3 N.T.S.

CLIENT

192 CENTRAL

CITY OF LONDON

COPYRIGHT

This drawing has been prepared solely for the intended use, thus any reproduction or distribution for any purpose other than authorized by Arcadis is forbidden. Written dimensions shall have precedence over scaled dimensions. Contractors shall verify and be responsible for all dimensions and conditions on the job, and Arcadis shall be informed of any variations from the dimensions and conditions shown on the drawing. Shop drawings shall be submitted to Arcadis for general conformance before proceeding with fabrication.

Arcadis Professional Services (Canada) Inc.
is a part of Arcadis

ISSUES

No.	DESCRIPTION	DATE
1	ISSUED FOR 60% DESIGN REVIEW	2022-06-08

KEY PLAN

SEAL

CONSULTANT



410 Albert Street - Suite 101
Waterloo ON N2L 3V3 Canada
tel 519 585 2255
www.arcadis.com

PROJECT

192 CENTRAL

CITY OF LONDON

PROJECT NO:

139153

DRAWN BY:

E.L.

CHECKED BY:

M.P.

PROJECT MGR:

M.P.

APPROVED BY:

T.M.

SHEET TITLE

LANDSCAPE DETAILS

SHEET NUMBER

LD3

ISSUE

1