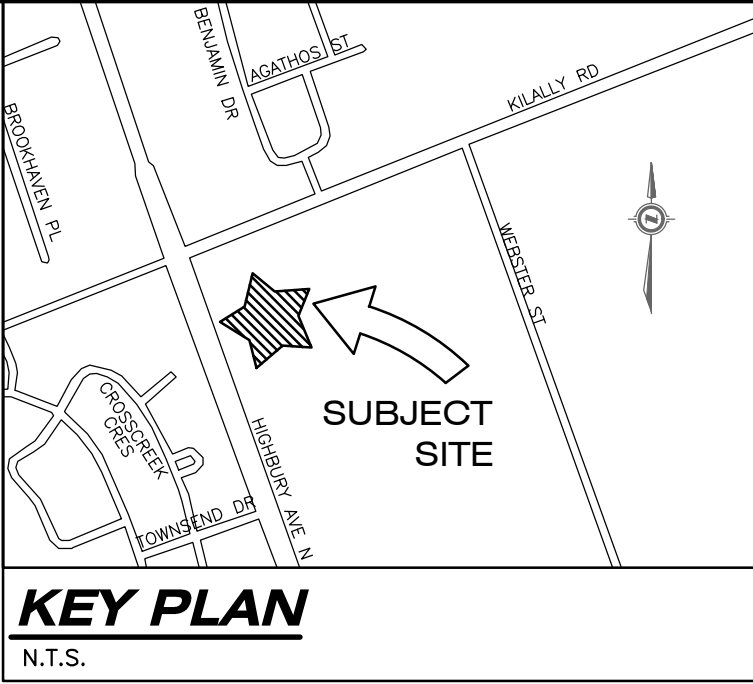


TREE PRESERVATION NOTES

- THE TREE PRESERVATION FENCING INDICATED ON THE LANDSCAPE PLAN MUST BE INSTALLED PRIOR TO THE INITIATION OF SITE WORKS, UNDER THE DIRECTION OF THE LANDSCAPE ARCHITECT.
- ONCE THE EXCAVATION WORK ADJACENT TO THE TREE PROTECTION ZONE HAS BEEN COMPLETED, THE TREE PROTECTION FENCE SHOULD BE RE-INSTALLED AND LEFT IN PLACE UNTIL THE CONSTRUCTION PHASE OF THE PROJECT IS COMPLETE. MAINTENANCE OF THE TREE PROTECTION FENCE THROUGHOUT CONSTRUCTION WILL LIMIT PHYSICAL DAMAGE TO THE TREES BY PASSING VEHICLES OR EQUIPMENT. IT WILL ALSO SERVE TO REDUCE SOIL COMPACTION IN THE ROOT ZONES. BOTH PHYSICAL DAMAGE AND SOIL COMPACTION ARE ALSO COMMON CAUSES OF TREE LOSS ON CONSTRUCTION SITES.
- ALL TREES LOCATED WITHIN THE PROJECT AREA DESIGNATED FOR PRESERVATION, OR DEMOTED AS EXISTING AND ALL TREES LOCATED ON ADJACENT PROPERTIES SHALL BE PROTECTED.
- IN THE EVENT THAT ANY OF THE TREES DESIGNATED FOR PROTECTION, LOCATED ON THE ADJACENT PROPERTY OR THE ROAD ALLOWANCE, ARE DAMAGED OR KILLED BY THE ACTIONS OF THE CONTRACTOR OR SUB-CONTRACTOR, THE CONTRACTOR / OWNER WILL BE RESPONSIBLE FOR THE REPLACEMENT OF THE TREE(S) WITH MATERIAL OF EQUAL VALUE AND COMPARABLE SPECIES, TO THE SATISFACTION OF THE LANDSCAPE ARCHITECT, OWNER AND CITY OF LONDON AS APPROPRIATE.
- THE AREAS WITHIN THE DRIPLINES OF THE TREES BEING PROTECTED ARE NOT TO BE USED FOR ANY TYPE OF STORAGE, FOR ANY DURATION. EXAMPLES INCLUDE TOPSOIL, GRANULAR MATERIAL, CONSTRUCTION MATERIAL / DEBRIS OR EQUIPMENT. NO TRENCHING FOR ANY UNDERGROUND SERVICES IS PERMITTED WITHIN THE DRIPLINE OF PROTECTED TREES. TUNNELING MAY BE PERMITTED, BUT NOT WITHOUT APPROVAL OF THE LANDSCAPE ARCHITECT.
- NO RIGGING, CABLES, ANCHORS, OR ANY OTHER STRUCTURE IS TO BE ATTACHED TO TREES BEING PROTECTED. NOTWITHSTANDING ENVIRONMENTAL RESTRICTIONS OTHERWISE, FLUSHING, WASHING, RINSING, OR DISPOSING OF ANY LIQUIDS IS NOT PERMITTED WITHIN THE FEEDING ROOT ZONE OF PROTECTED TREES.

REFERENCE DOCUMENTS:

- INFORMATION OBTAINED FROM TOPOGRAPHIC SURVEY BY SBMGEOMATICS. FILE NUMBER: SBM-21-0073, DATED JANUARY 11, 2022.



LEGAL INFORMATION

PART OF
LOT 11, 12, 25
REGISTERED PLAN 80(C)
(GEOGRAPHIC TOWNSHIP OF LONDON)
NOW IN THE
CITY OF LONDON
COUNTY OF MIDDLESEX

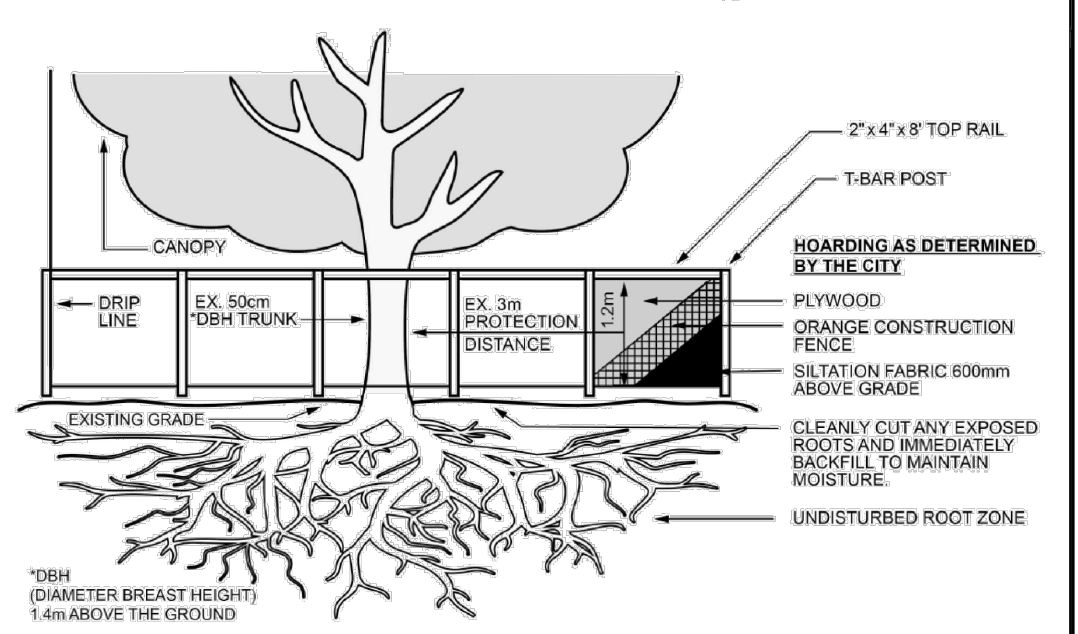
LEGEND:

- BUILDING ENTRANCE
- EX. DECIDUOUS/ CONIFEROUS TREE
- EX. DECIDUOUS/ CONIFEROUS TREE TO BE REMOVED
- PROPOSED TREE PRESERVATION FENCE
- EXISTING TREE INVENTORY I.D. MARKER

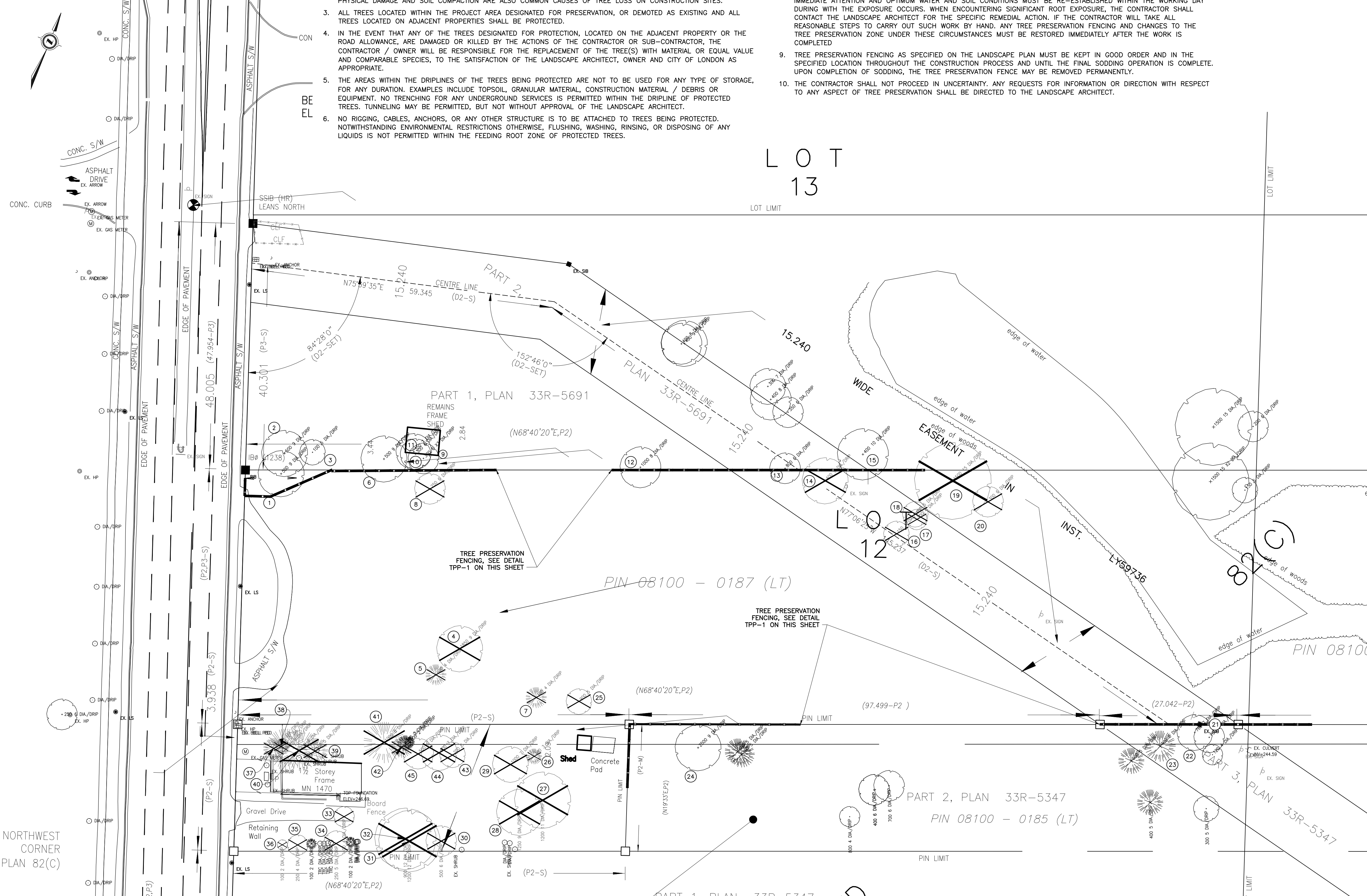
Tree Inventory

COMPLETED JANUARY 7 & JANUARY 9, 2022.
PREPARED BY DAN WEAGANT, OALA, CSLA

No.	Species	Caliper (DBH) (mm)	Condition and Notes
1	Celtis occidentalis - Hackberry	600	Good - Retain (on future road allowance)
2	Acer negundo - Manitoba Maple	500	Poor - retain (on adjacent property)
3	Celtis occidentalis - Hackberry	100	Good - Retain (on adjacent property)
4	Cornus florida - Flowering Dogwood	400	Fair - Remove for site grading
5	Picea glauca - White Spruce	200	Good - Remove for site grading
6	Acer negundo - Manitoba Maple	500	Poor - Retain (on adjacent property)
7	Picea glauca - White Spruce	300	Good - Remove for site grading
8	Acer negundo - Manitoba Maple	250	Poor - Remove for building construction
9	Celtis occidentalis - Hackberry	300	Good - Retain (on adjacent property)
10	Celtis occidentalis - Hackberry	300	Good - Retain (on adjacent property)
11	Acer negundo - Manitoba Maple	250	Poor - Retain (on adjacent property)
12	Acer saccharum - Sugar Maple	1100	Poor - Retain (on adjacent property)
13	Populus grandidentata - Large-toothed Aspen	800	Fair - Retain (on adjacent property)
14	Betula alleghaniensis - Yellow Birch	400	Poor - Remove for site grading
15	Acer saccharum - Sugar Maple	400	Fair - Retain (on adjacent property)
16	Ulmus thomassii - Rock Elm	150	Good - Remove for site grading
17	Ulmus thomassii - Rock Elm	200	Good - Remove for site grading
18	Ulmus thomassii - Rock Elm	150	Good - Remove for site grading
19	Salix spp. - Weeping Willow	700	Poor - Remove for site grading
20	Betula alleghaniensis - Yellow Birch	300	Poor - Remove for site grading
21	Tilia cordata - Littleleaf Linden	300	Fair - Retain (on adjacent property)
22	Tilia cordata - Littleleaf Linden	700	Good - Retain (on adjacent property)
23	Pinus strobus - White Pine	300	Good - Retain (on adjacent property)
24	Salix spp. - Weeping Willow	2500	Poor - Retain (on adjacent property)
25	Cornus florida - Flowering Dogwood	800	Poor - Remove for site grading
26	Acer saccharum - Sugar Maple	250	Fair - Remove for site grading
27	Acer saccharum - Silver Maple	1200	Fair - Remove for site grading
28	Acer saccharum - Silver Maple	600	Fair - Remove for site grading
29	Acer saccharum - Silver Maple	1000	Fair - Remove for site grading
30	Acer negundo - Manitoba Maple	500	Poor - Remove for building construction
31	Acer saccharum - Silver Maple	600	Poor - Remove for building construction
32	Acer saccharum - Silver Maple	700	Poor - Remove for building construction
33	Acer saccharum - Sugar Maple	400	Poor - Remove for building construction
34	Acer saccharum - Sugar Maple	100	Poor - Remove for building construction
35	Picea glauca - White Spruce	200	Poor - Remove for building construction
36	Acer saccharum - Sugar Maple	100	Poor - Remove for building construction
37	Thuja occidentalis - Cedar	200	Poor - Remove for building construction
38	Thuja occidentalis - Cedar	200	Poor - Remove for building construction
39	Picea glauca - White Spruce	300	Poor - Remove for building construction
40	Picea glauca - White Spruce	400	Poor - Remove for building construction
41	Thuja occidentalis - Cedar	200	Poor - Remove for building construction
42	Thuja occidentalis - Cedar	200	Poor - Remove for building construction
43	Acer saccharum - Sugar Maple	200	Poor - Remove for building construction
44	Acer negundo - Manitoba Maple	400	Poor - Remove for building construction
45	Celtis occidentalis - Hackberry	200	Poor - Remove for building construction



CITY OF LONDON STANDARD DRAWING
TREE PRESERVATION DETAILS
DWG: TPP-1 DATE: 2022-09-28 APPROVED BY: [Signature]



AS CONSTRUCTED SERVICES	COMPLETION	No.	REVISIONS	D/M/Y	BY	CONSULTANT	LA'S STAMP	LA'S STAMP	CLIENT	SCALE	TITLE	PROJECT No.
DESIGN	DW	1	ISSUED FOR REZONING	14/01/22	AK	DAN WEAGANT, OALA, CSLA, LANDSCAPE ARCHITECT 703 FORMAN AVENUE STRATFORD, ON N5A 0G2 PH 519-694-5470 danweagant@rogers.com			COPIA DEVELOPMENTS 11-1673 RICHMOND ST N - SUITE 244 LONDON, ON N6G 2N3 P: 514.453.6439	SCALE 1:400 4.0m 8.0m	TREE MANAGEMENT PLAN, LEGEND, AND TREE INVENTORY HIGHBURY AVE RESIDENTIAL DEVELOPMENT	SBM-19-0166
DRAWN	AW											SHEET No.
CHECKED	DW											L1
APPROVED	DW											PLAN FILE No.
DATE												
CAD	19-0166											

13-2013 John SBM-19-0166 -1470-1474 Highbury Ave N3, TPP-1 SBM-19-0166, Copied, Development - 1470 - Highbury Ave N - Toronto Municipal Council