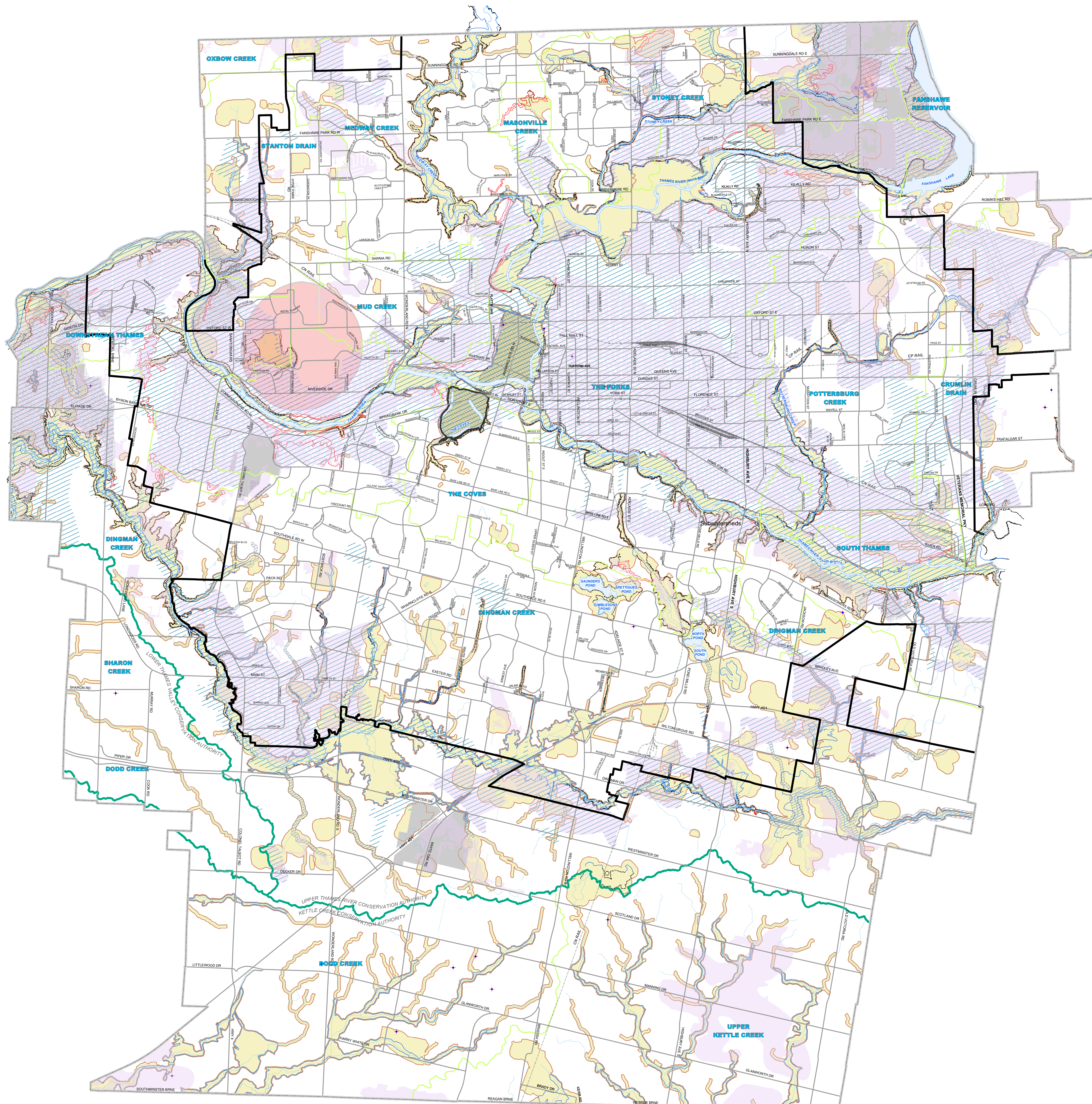
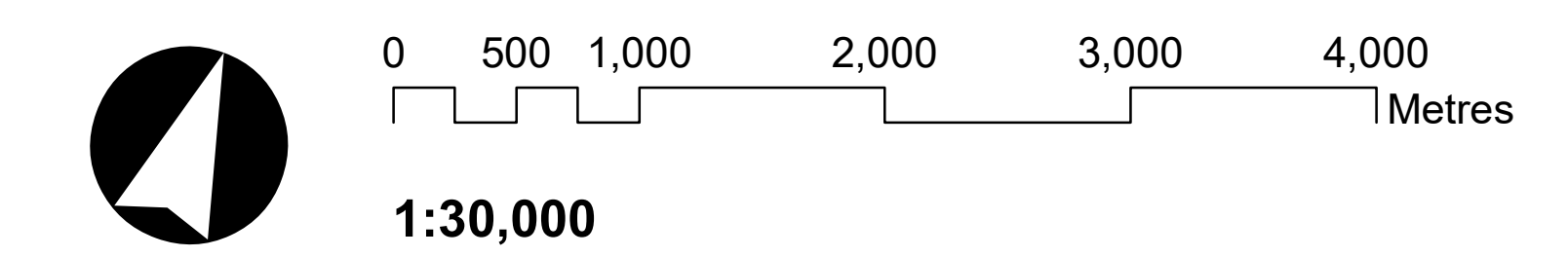


MAP 6 - HAZARDS AND NATURAL RESOURCES



LEGEND

- HAZARDS**
- Regulatory Flood Line
NOTE 1: Flood Lines shown on this map are approximate. The precise delineation of flood plain mapping is available from the Conservation Authority having jurisdiction.
 - Special Policy Areas
 - Potential Special Policy Areas
 - Riverine Erosion Hazard Limit for Confined Systems
 - Riverine Erosion Hazard Limit for Unconfined Systems
 - Maximum Hazard Line
 - Conservation Authority Regulation Limit
 - Abandoned Oil/Gas Wells
- NOTE 2: Flood Fringe mapping for certain areas of the City is available from the Upper Thames Conservation Authority.
- NOTE: Steep Slopes Outside the Riverine Erosion Hazard Limit on the map are approximate. Precise delineation is available from the Conservation Authority having jurisdiction.
- NATURAL RESOURCES**
- Aggregate Resource Areas
 - Extractive Industrial Areas
 - Wellhead Protection Areas
 - Emergency Municipal Water Wells
 - Significant Groundwater Recharge Areas
 - Highly Vulnerable Aquifers
- BASE MAP FEATURES**
- Streets (See Map 3)
 - Railways
 - Urban Growth Boundary
 - Water Courses/Ponds
 - Water Bodies
 - Conservation Authority Boundary
 - Subwatershed Boundary
 - STONEY CREEK Subwatershed Name



ADOPTED BY COUNCIL ON JUNE 23, 2016

APPROVED BY THE MINISTRY OF MUNICIPAL AFFAIRS ON DECEMBER 28, 2016

LONDON PLAN CONSOLIDATED MAY 25, 2023

THIS MAP MUST BE READ IN CONJUNCTION WITH THE TEXT OF THE LONDON PLAN

While every effort has been made to ensure that the mapping is accurate, a reader should verify all information contained in this map before acting upon it by contacting the City Clerk's Office, Suite 308, 300 Dufferin Avenue, London, Ontario, N6B 1Z2 or by calling (519) 661-2500 extension 4939