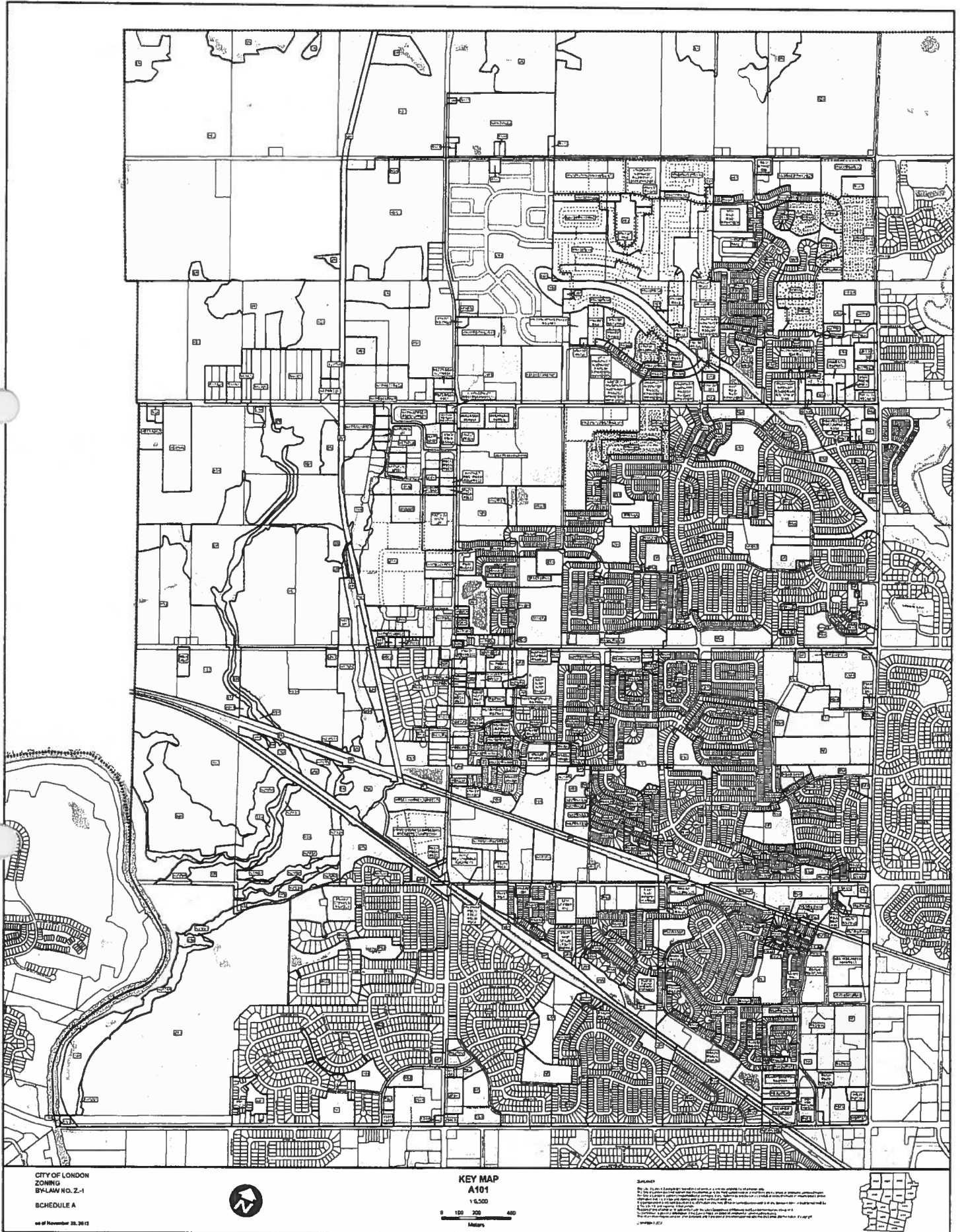


CITY OF LONDON
 ZONING BY-LAW
 NO. Z-1

SCHEDULE 'A'
 INDEX MAP





CITY OF LONDON
ZONING
BY-LAW NO. Z-1
SCHEDULE A

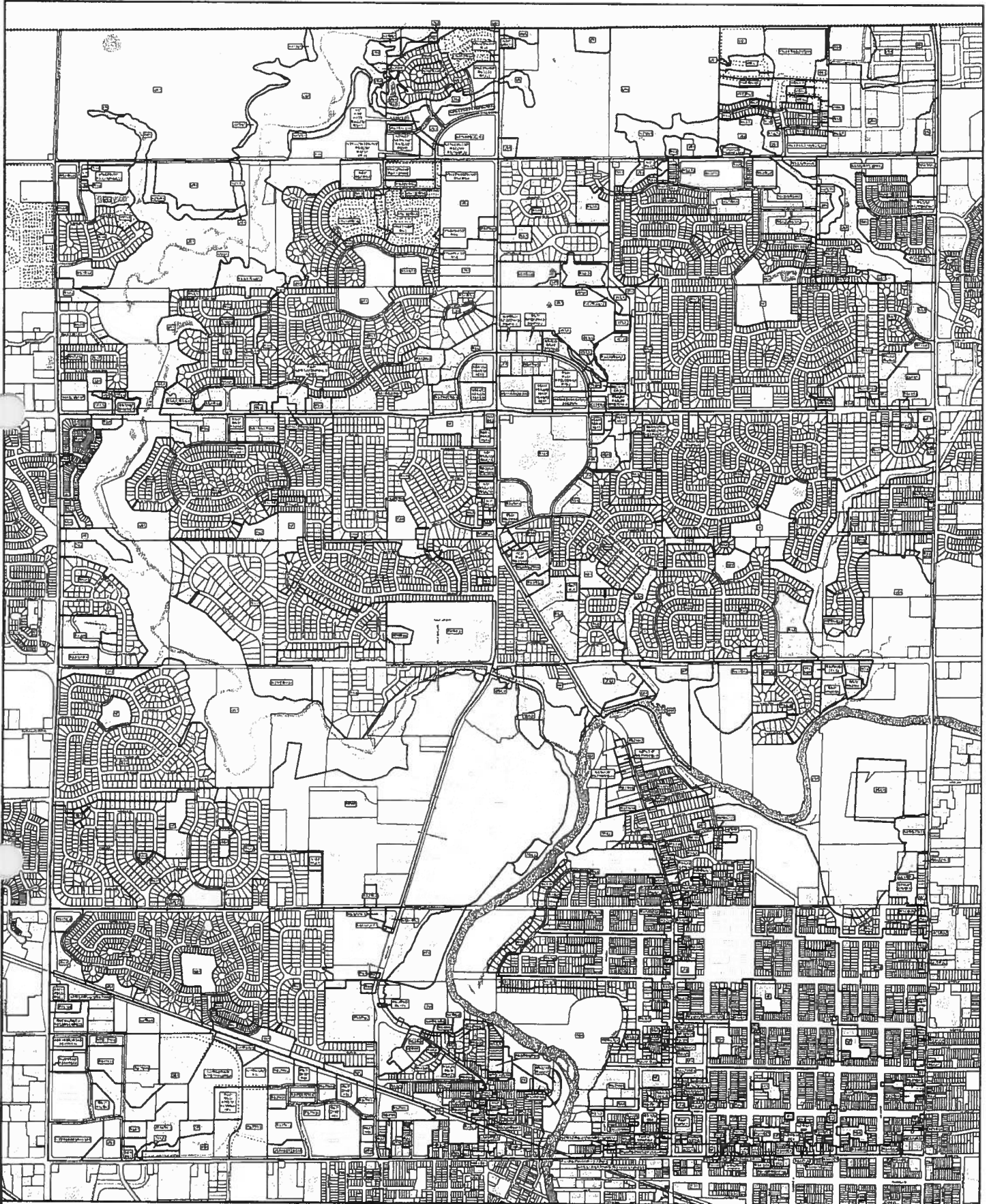
as of November 23, 2011



KEY MAP
A101
1:6,500
0 100 200 400
Meters

Summary
This key map is intended to provide a visual reference to the zoning map.
It is not a substitute for the zoning map and should not be used to determine the zoning of a specific parcel of land.
For more information, please contact the City of London Planning Department.
© City of London 2011. All rights reserved.





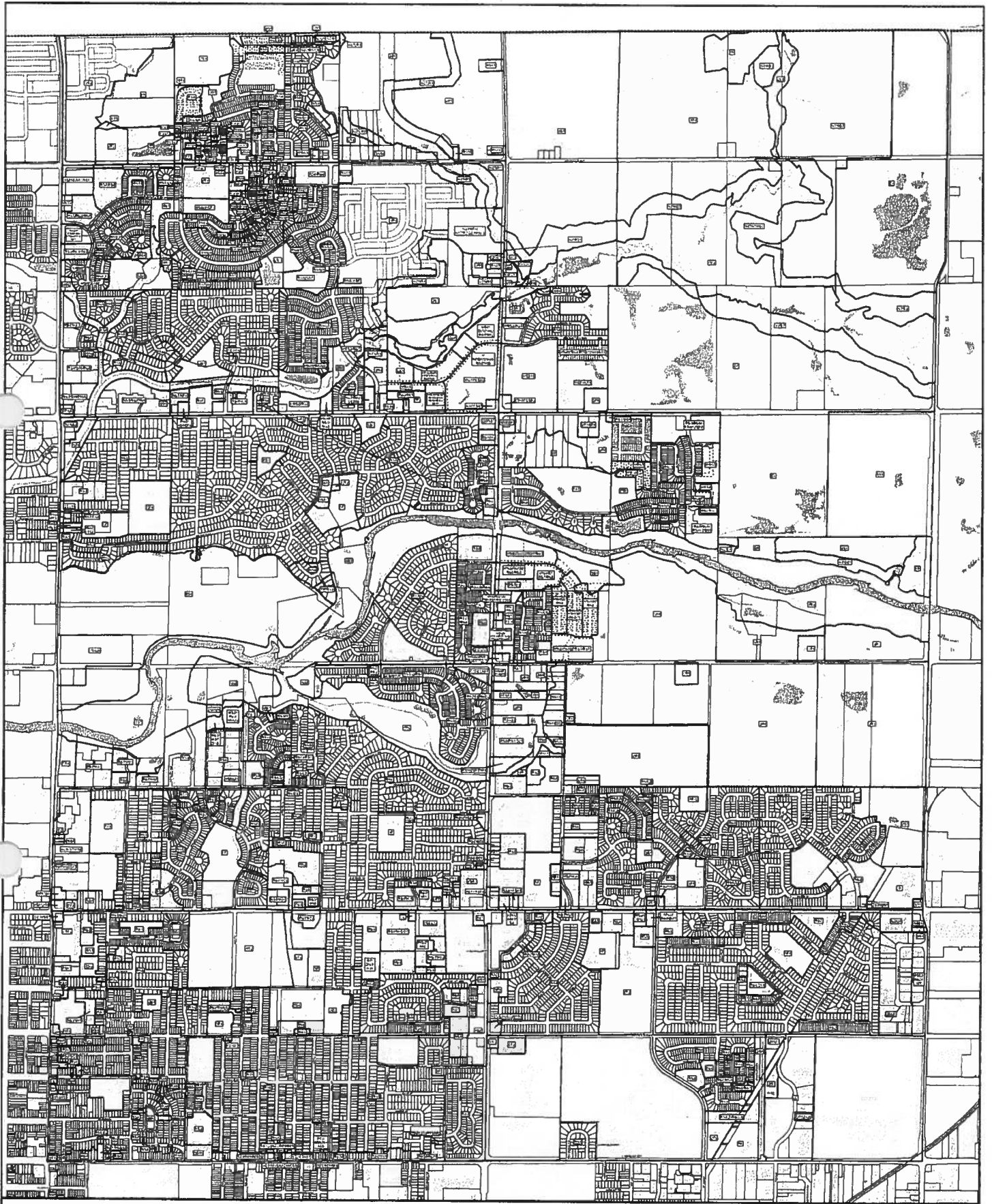
CITY OF LONDON
 ZONING
 BY-LAW NO. 2-1
 SCHEDULE A
 as of November 28, 2012



KEY MAP
 A102
 1:4,500
 0 100 200 400
 Meters

This map is a key map of the City of London and is not intended to be used as a legal document. It is a simplified representation of the City's zoning and is not intended to be used as a legal document. It is a simplified representation of the City's zoning and is not intended to be used as a legal document. It is a simplified representation of the City's zoning and is not intended to be used as a legal document.





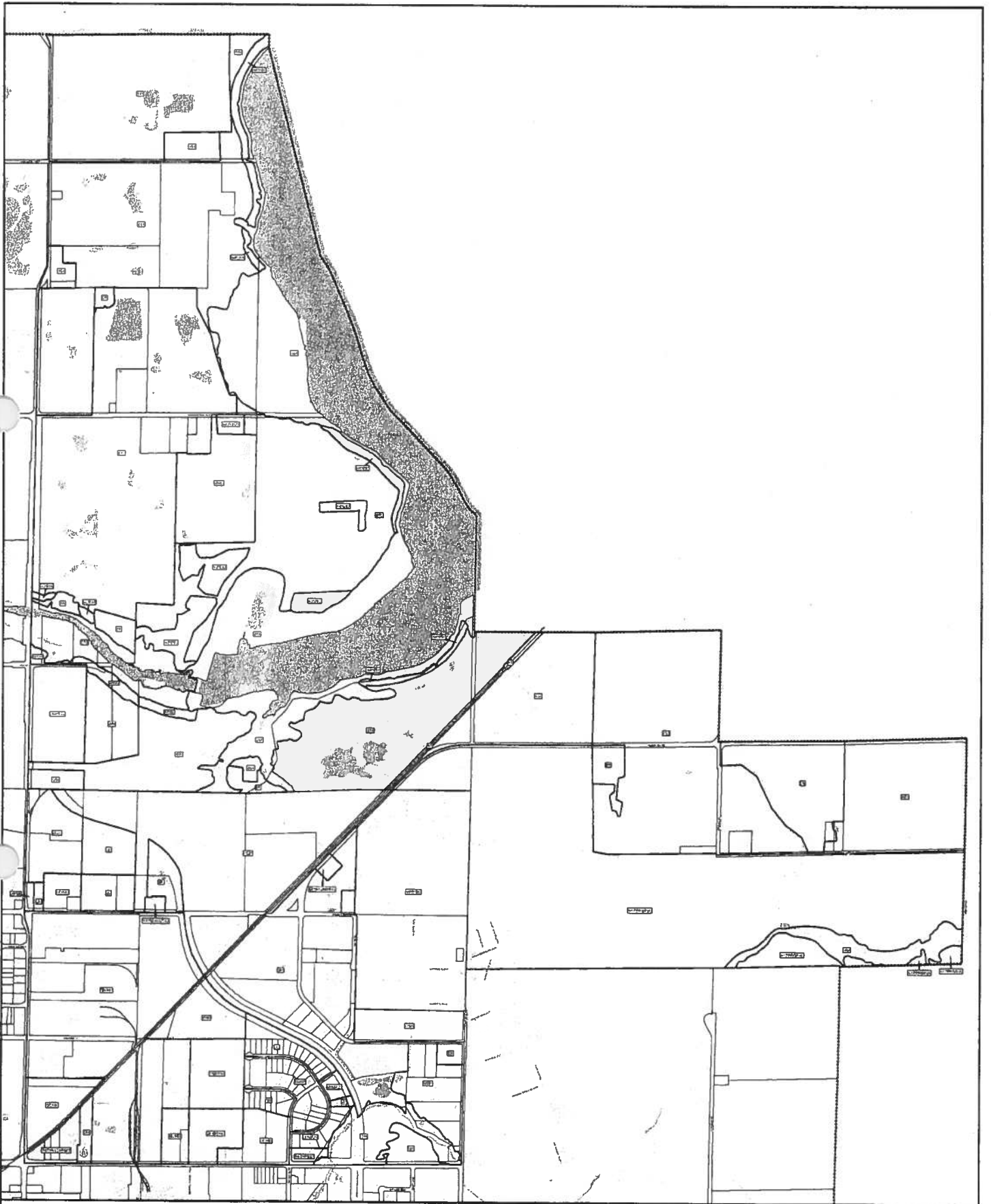
CITY OF LONDON
 ZONING
 BY-LAW NO. 2-1
 SCHEDULE A
 as of November 28, 2013



KEY MAP
 A103
 1:8,500
 0 100 200 400
 METERS

NOTES:
 1. The City of London Zoning By-Law No. 2-1 is the legal authority for the zoning designations shown on this map.
 2. The City of London Zoning By-Law No. 2-1 is subject to change without notice.
 3. The City of London Zoning By-Law No. 2-1 is subject to the provisions of the Planning Act, R.S.O. 1990, c. 30, and the Planning Act, R.S.O. 1990, c. 30, as amended.
 4. The City of London Zoning By-Law No. 2-1 is subject to the provisions of the Planning Act, R.S.O. 1990, c. 30, and the Planning Act, R.S.O. 1990, c. 30, as amended.
 5. The City of London Zoning By-Law No. 2-1 is subject to the provisions of the Planning Act, R.S.O. 1990, c. 30, and the Planning Act, R.S.O. 1990, c. 30, as amended.
 6. The City of London Zoning By-Law No. 2-1 is subject to the provisions of the Planning Act, R.S.O. 1990, c. 30, and the Planning Act, R.S.O. 1990, c. 30, as amended.
 7. The City of London Zoning By-Law No. 2-1 is subject to the provisions of the Planning Act, R.S.O. 1990, c. 30, and the Planning Act, R.S.O. 1990, c. 30, as amended.
 8. The City of London Zoning By-Law No. 2-1 is subject to the provisions of the Planning Act, R.S.O. 1990, c. 30, and the Planning Act, R.S.O. 1990, c. 30, as amended.
 9. The City of London Zoning By-Law No. 2-1 is subject to the provisions of the Planning Act, R.S.O. 1990, c. 30, and the Planning Act, R.S.O. 1990, c. 30, as amended.
 10. The City of London Zoning By-Law No. 2-1 is subject to the provisions of the Planning Act, R.S.O. 1990, c. 30, and the Planning Act, R.S.O. 1990, c. 30, as amended.





CITY OF LONDON
 ZONING
 BY-LAW NO. Z-1
 SCHEDULE A

as of November 20, 2013



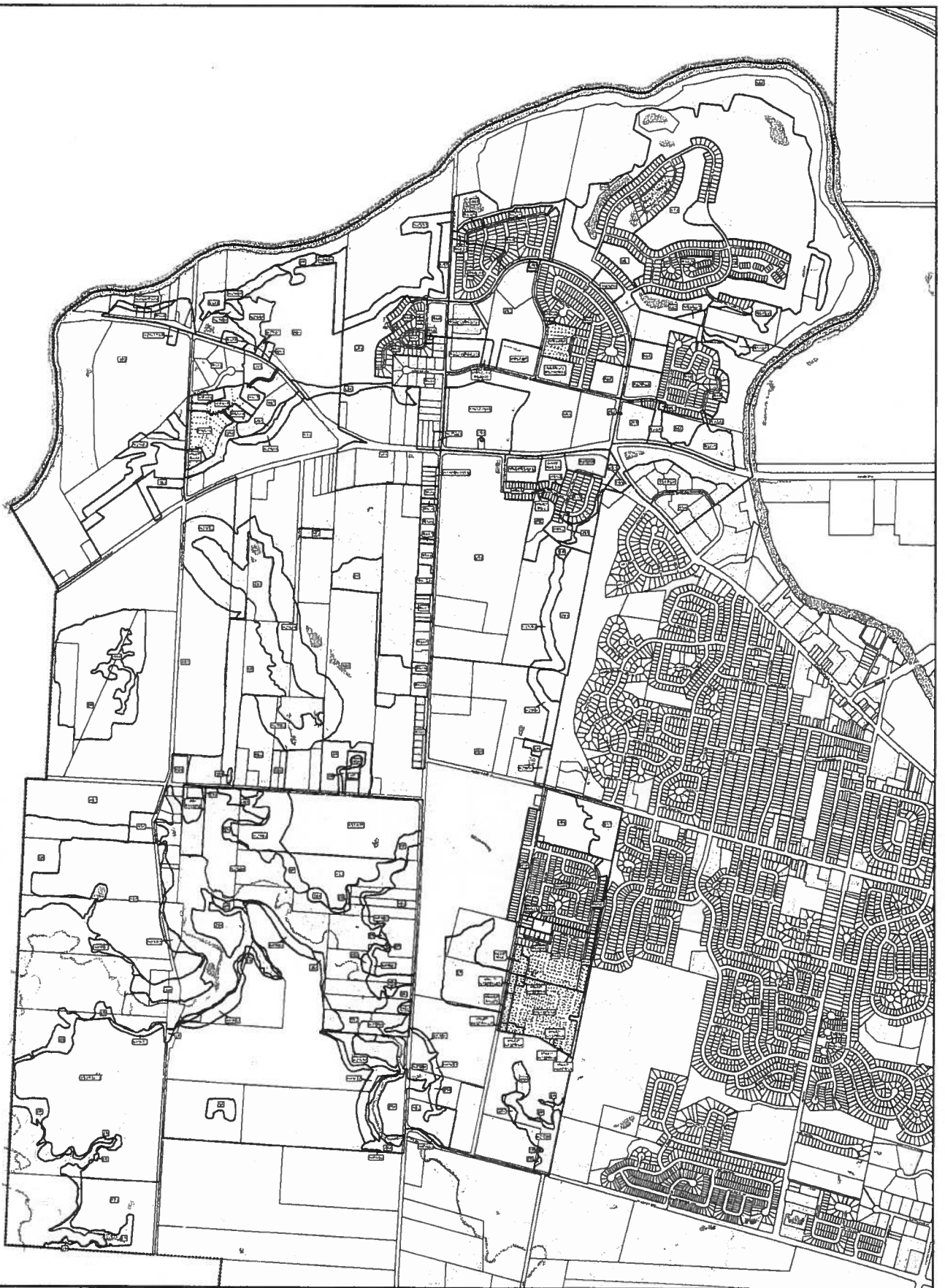
KEY MAP
 A104

1:8,500



DISCLAIMER
 This map is a key map and does not constitute a zoning by-law or a zoning certificate. It is intended to provide a general overview of the zoning scheme and is not to be used as a legal document. The City of London is not responsible for any errors or omissions in this map. The City of London is not responsible for any changes to the zoning scheme that may occur after the date of publication of this map. The City of London is not responsible for any changes to the zoning scheme that may occur after the date of publication of this map.





CITY OF LONDON
ZONING
BY-LAW NO. 2-1
SCHEDULE A

as of November 28, 2012



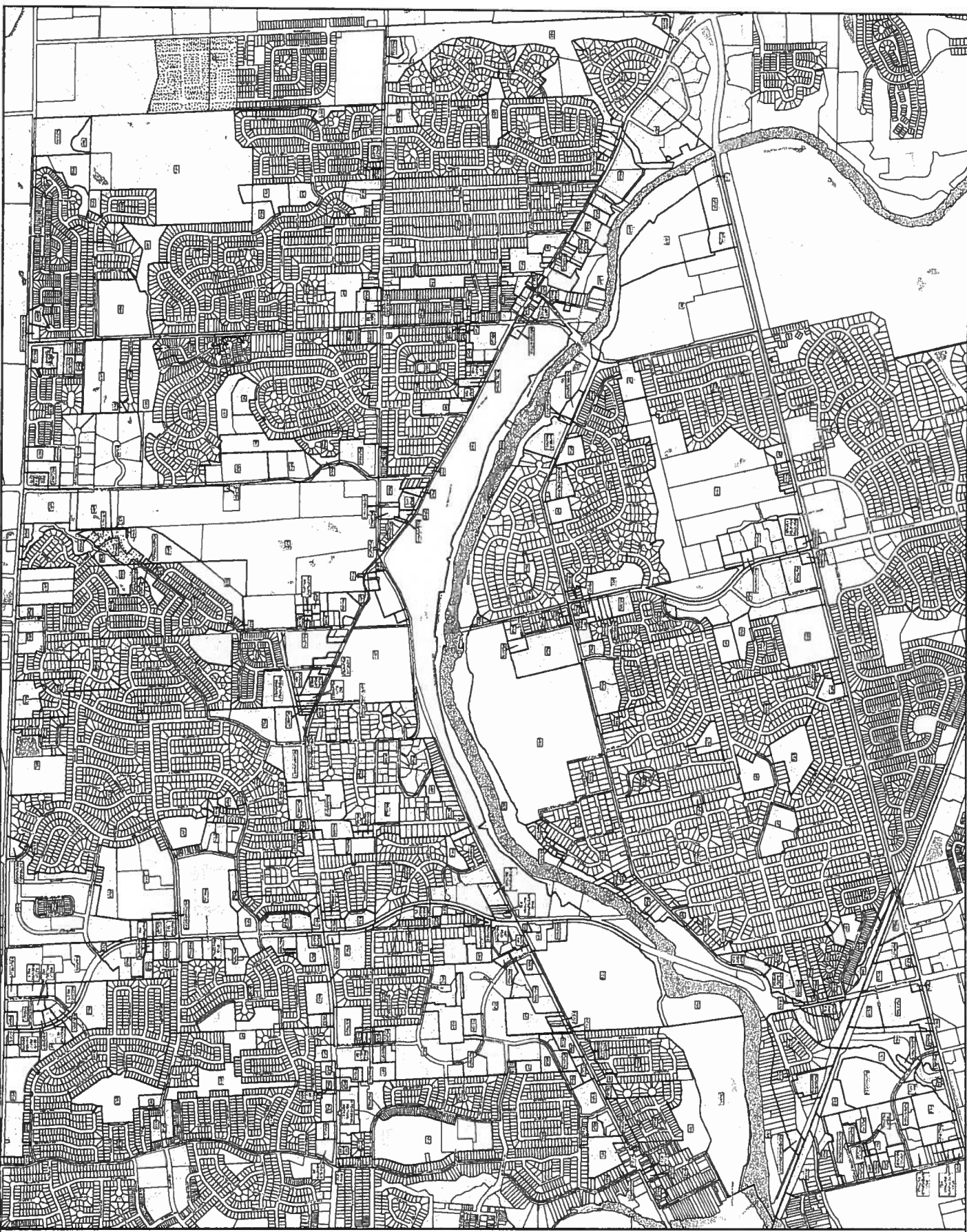
KEY MAP
A105

1:8,500



DISCLAIMER
The City of London does not warrant or represent in any way the accuracy or completeness of the information contained in this key map. The City of London is not responsible for any errors or omissions in this key map. The City of London is not responsible for any damages or losses resulting from the use of this key map. The City of London is not responsible for any legal actions or claims arising from the use of this key map. The City of London is not responsible for any other matters relating to this key map.





CITY OF LONDON
 BY-LAW NO. 2-11
 SCHEDULE A
 as amended 28. 03. 72



KEY MAP
 A105



DISCLAIMER
 The City of London Corporation is not responsible for any errors or omissions in this map or for any consequences arising therefrom. The Corporation is not liable for any damage or loss, whether direct or indirect, arising from the use of this map. The Corporation is not responsible for any changes to the map or for any consequences arising therefrom. The Corporation is not liable for any damage or loss, whether direct or indirect, arising from the use of this map.



CITY OF LONDON
 ZONING
 BY-LAW NO. Z-1
 SCHEDULE A
 as of November 26, 2012



KEY MAP
A107

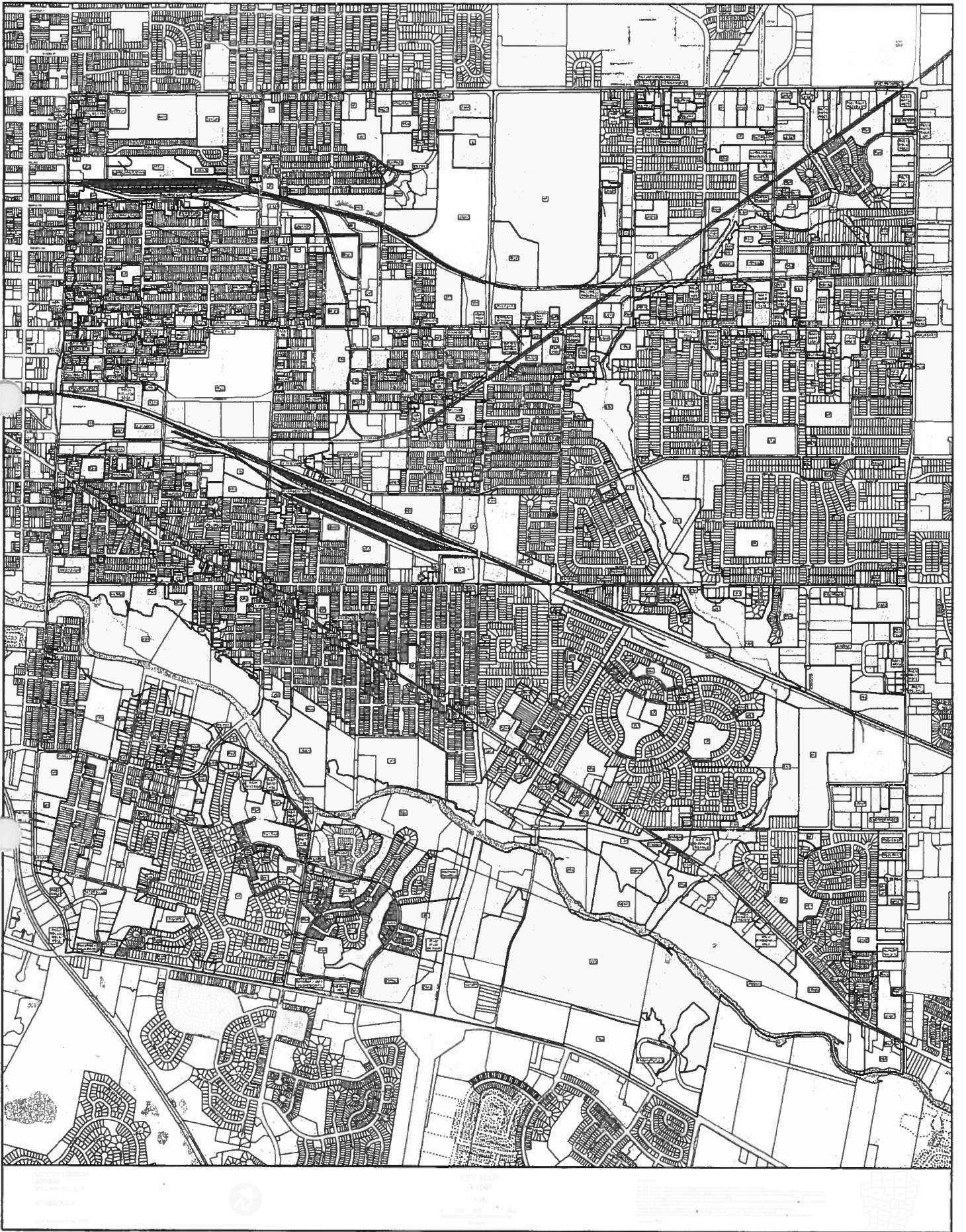
1:5,500

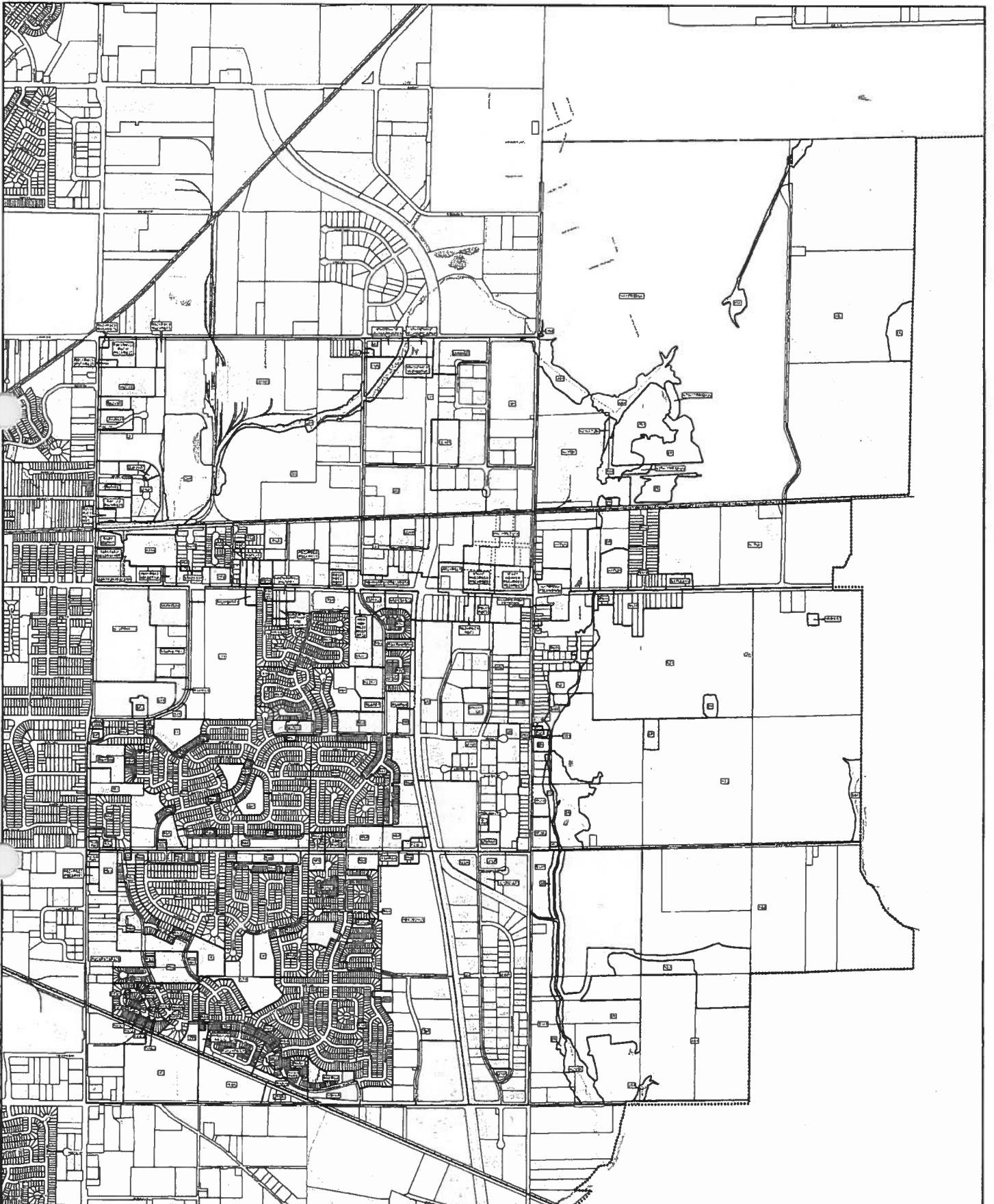


Meters

DISCLAIMER
 This map is provided for informational purposes only and does not constitute a contract or any other legal instrument. It is not intended to be used as a basis for any legal action or to determine the exact boundaries of any property. The City of London is not responsible for any errors or omissions in this map. The City of London is not responsible for any damages or losses resulting from the use of this map. The City of London is not responsible for any changes to the map after the date of publication. The City of London is not responsible for any changes to the map after the date of publication.





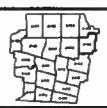


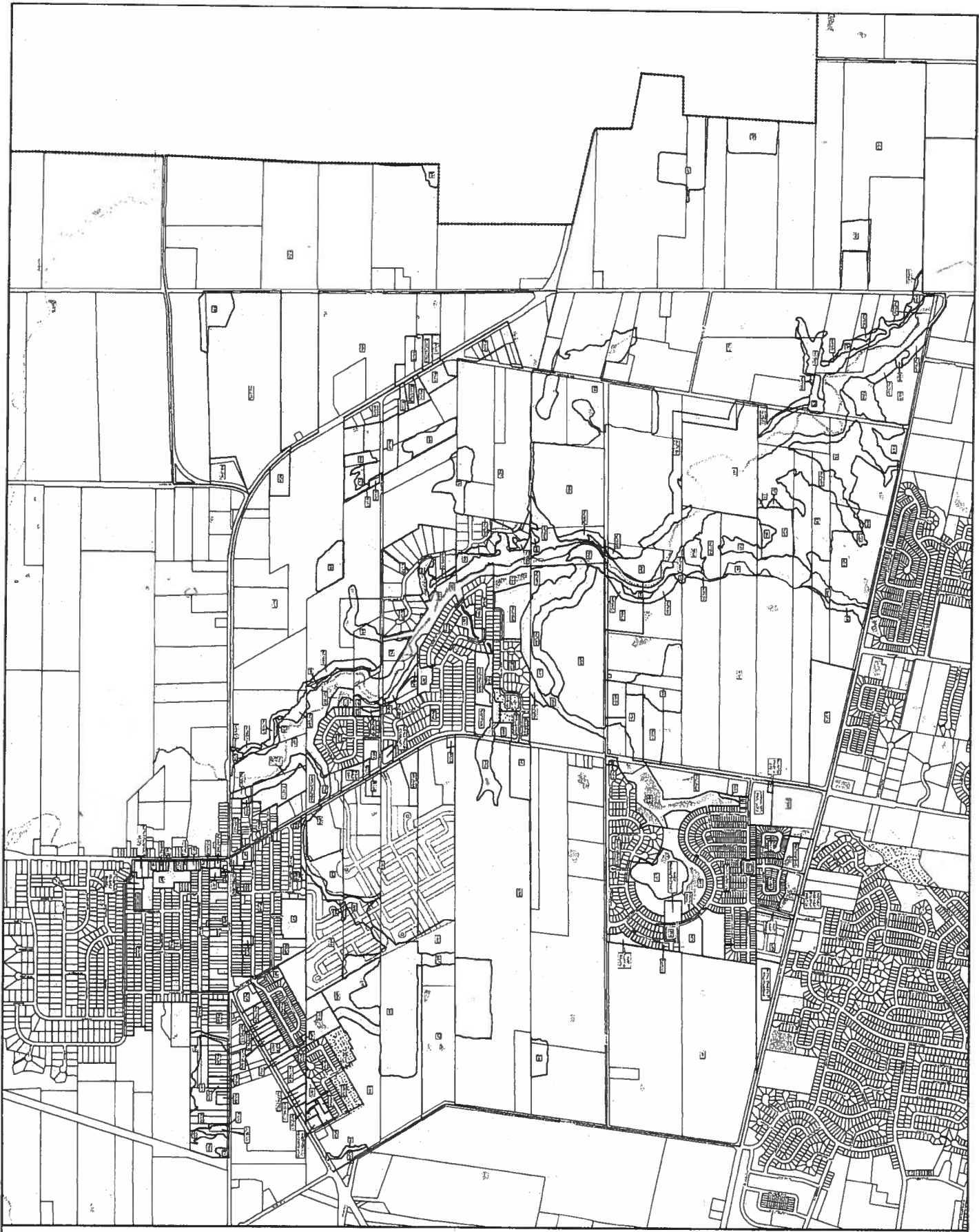
CITY OF LONDON
 ZONING
 BY-LAW NO. Z-1
 SCHEDULE A
 AS OF FEBRUARY 28, 2012



KEY MAP
 A108
 1:5,500
 0 100 200 400
 Meters

Disclaimer
 The City of London Zoning and other information is not intended to constitute any form of insurance, and is not intended to be used as such. It is not intended to be used as a basis for any insurance policy. The City of London Zoning and other information is not intended to be used as a basis for any insurance policy. The City of London Zoning and other information is not intended to be used as a basis for any insurance policy. The City of London Zoning and other information is not intended to be used as a basis for any insurance policy.





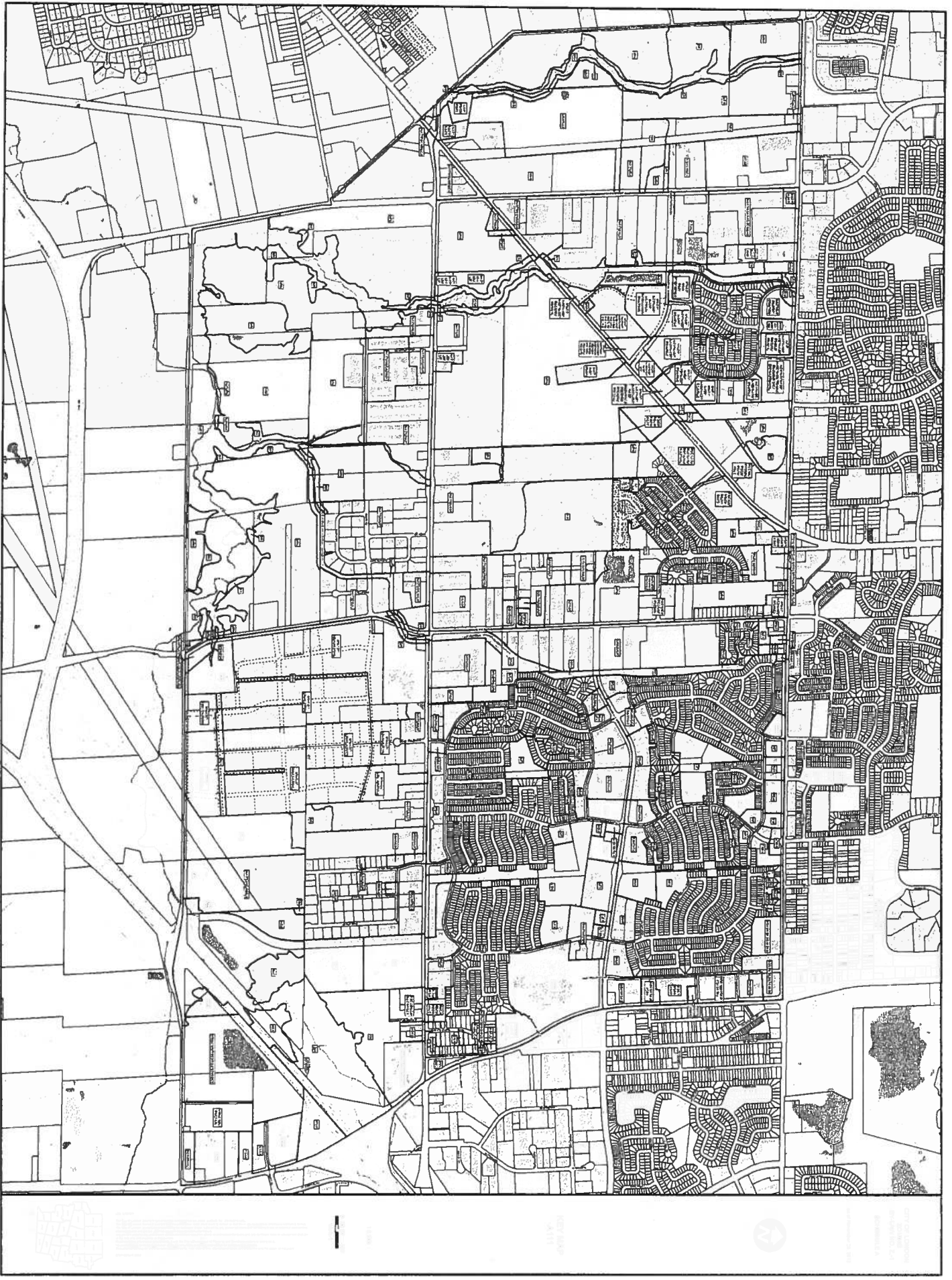
NOTICE
This map is a reproduction of the original map on file in the City of London Planning Department. It is not to be used for any purpose other than that for which it was prepared. The City of London Planning Department is not responsible for any errors or omissions in this map. The City of London Planning Department is not responsible for any changes in the law or in the facts which may affect the validity of this map. The City of London Planning Department is not responsible for any damages or losses resulting from the use of this map. The City of London Planning Department is not responsible for any claims or actions against it or its officers or employees in connection with this map. The City of London Planning Department is not responsible for any claims or actions against it or its officers or employees in connection with this map. The City of London Planning Department is not responsible for any claims or actions against it or its officers or employees in connection with this map.

1:2,500
0.25" = 100'
MAY 2011

KEY MAP
A110



CITY OF LONDON
BUILDING & PLANNING
SCHEME 1A
25th February 2011



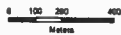


CITY OF LONDON
 ZONING
 BY-LAW NO. Z-1
 SCHEDULE A
 as of November 28, 2012



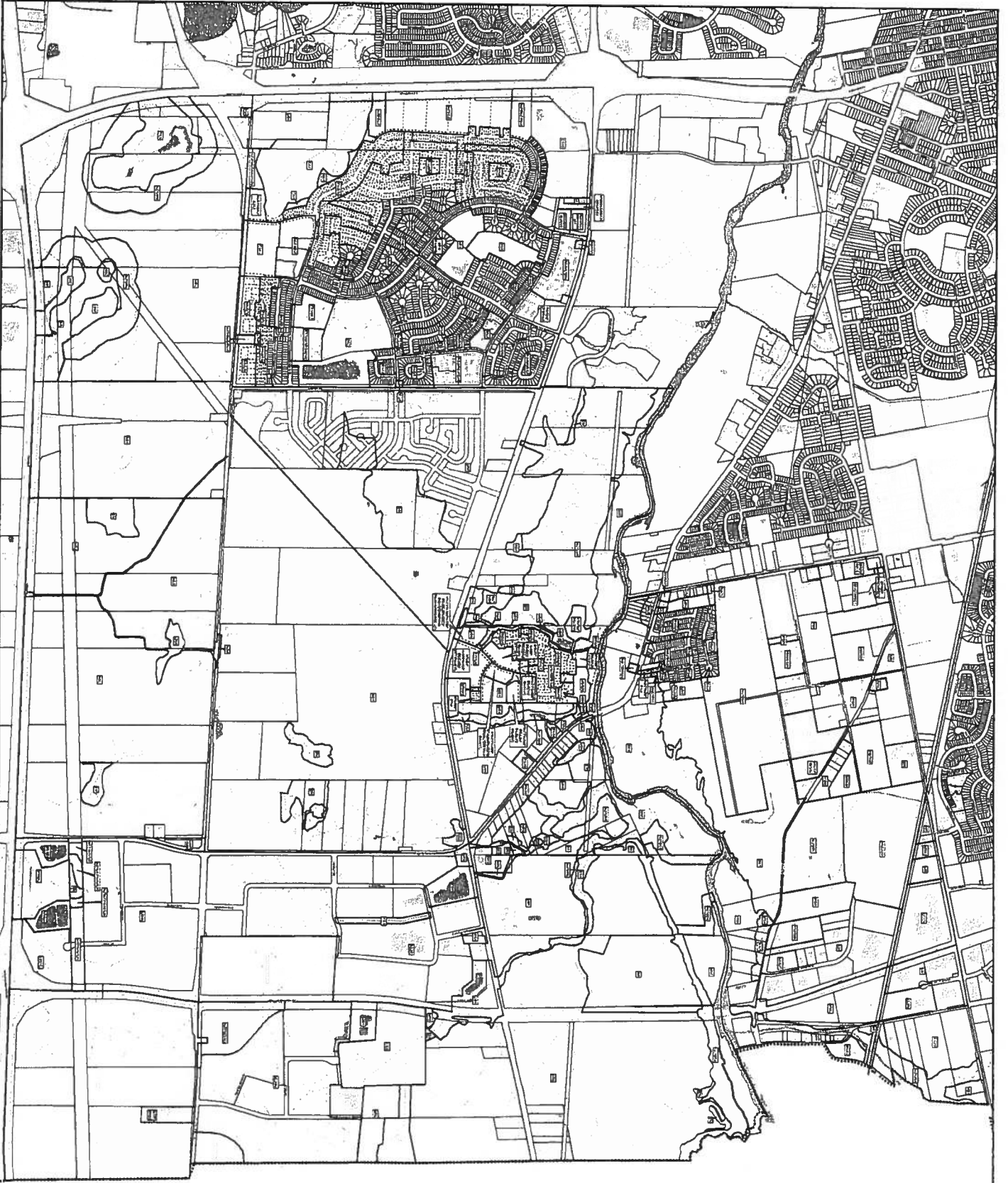
KEY MAP
A112

1:8,500



LEGEND
 The City of London Zoning By-Law No. Z-1, 2012, is a zoning by-law that sets out the rules for the use of land in the City of London. It is a key piece of legislation that governs the development and use of land in the City. The map shows the various zones established by the by-law, including residential, commercial, and industrial zones. The map is a key map, which means it provides a general overview of the zoning scheme. For more detailed information, refer to the full zoning by-law.





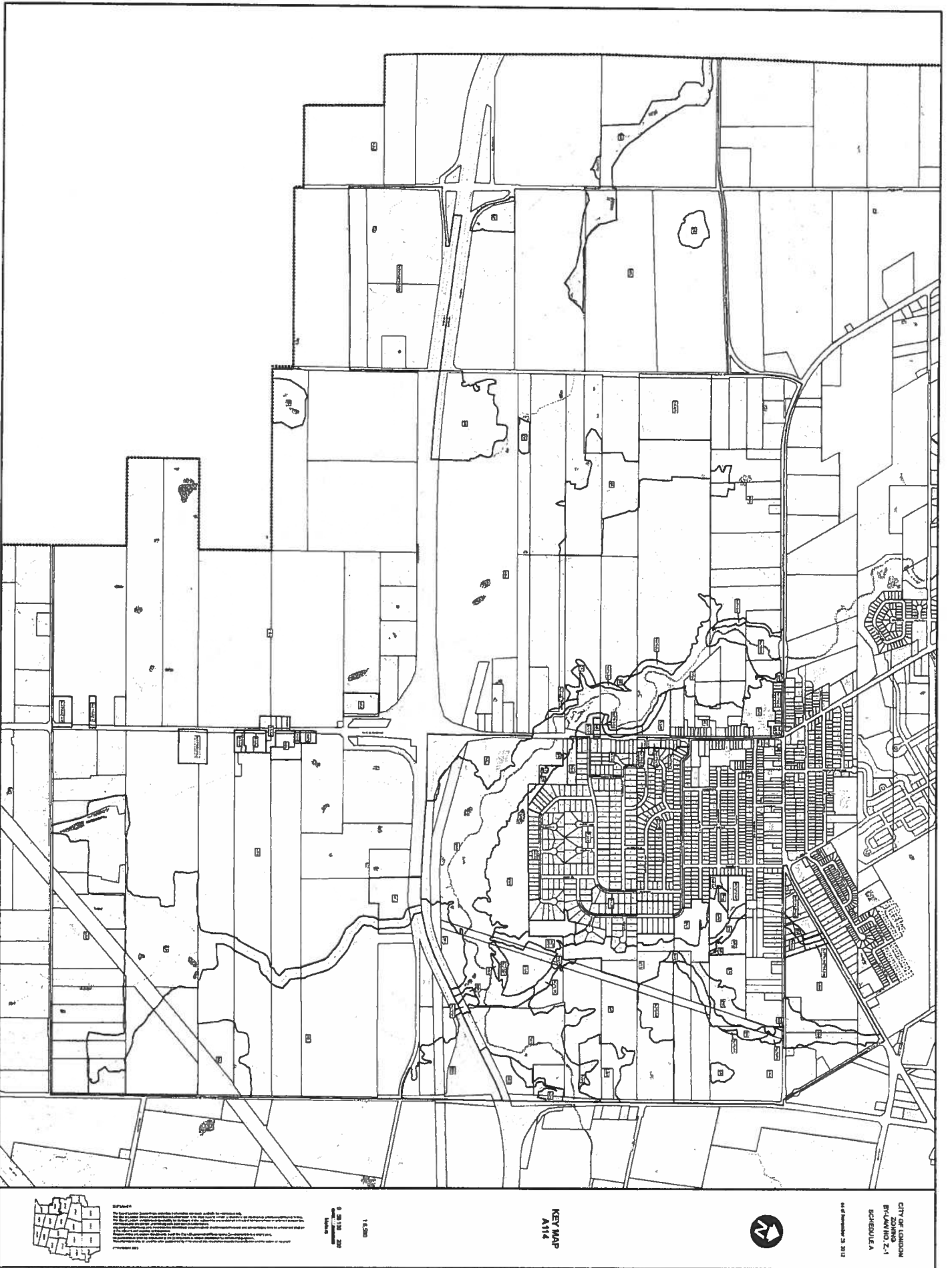
NOTES:
 1. This map is a preliminary map and is subject to change without notice.
 2. The map is based on the latest available data and is not a guarantee of accuracy.
 3. The map is not a substitute for a professional survey or engineering plan.
 4. The map is not a guarantee of title or ownership.
 5. The map is not a guarantee of the location or extent of any property.
 6. The map is not a guarantee of the location or extent of any public utility.
 7. The map is not a guarantee of the location or extent of any other public facility.
 8. The map is not a guarantee of the location or extent of any other public facility.
 9. The map is not a guarantee of the location or extent of any other public facility.
 10. The map is not a guarantee of the location or extent of any other public facility.

1:5,000
 0 50 100 200
 Feet

KEY MAP
 A113



CITY OF LANSING
 ZONING
 BY-LAW NO. 2-1
 SCHEDULE A
 As of November 28, 2012



NOTES
1. The boundaries shown on this map are based on the most recent available information.
2. The boundaries shown on this map are not to be construed as a warranty of accuracy.
3. The boundaries shown on this map are not to be construed as a warranty of title.
4. The boundaries shown on this map are not to be construed as a warranty of ownership.
5. The boundaries shown on this map are not to be construed as a warranty of any other right or interest.
6. The boundaries shown on this map are not to be construed as a warranty of any other right or interest.
7. The boundaries shown on this map are not to be construed as a warranty of any other right or interest.
8. The boundaries shown on this map are not to be construed as a warranty of any other right or interest.
9. The boundaries shown on this map are not to be construed as a warranty of any other right or interest.
10. The boundaries shown on this map are not to be construed as a warranty of any other right or interest.

1:4,500
9 20 100 200
Feet
1:4,500

KEY MAP
A114



CITY OF LONDON
BY-LAW NO. 2-1
SCHEDULE A
14th Amendment, 2012



CITY OF LONDON
 BOROUGH OF SOUTHWARK
 SCHEDULE 2.4
 SCHEDULE A
 as at November 29, 2013



NEW MAP
 A115

1:6300
 0 100 200
 METRES

Notes
 1. The map is a planimetric map and does not show any relief or elevation. It is based on the best available aerial photography and ground survey data.
 2. The map is a planimetric map and does not show any relief or elevation. It is based on the best available aerial photography and ground survey data.
 3. The map is a planimetric map and does not show any relief or elevation. It is based on the best available aerial photography and ground survey data.
 4. The map is a planimetric map and does not show any relief or elevation. It is based on the best available aerial photography and ground survey data.
 5. The map is a planimetric map and does not show any relief or elevation. It is based on the best available aerial photography and ground survey data.
 6. The map is a planimetric map and does not show any relief or elevation. It is based on the best available aerial photography and ground survey data.
 7. The map is a planimetric map and does not show any relief or elevation. It is based on the best available aerial photography and ground survey data.
 8. The map is a planimetric map and does not show any relief or elevation. It is based on the best available aerial photography and ground survey data.
 9. The map is a planimetric map and does not show any relief or elevation. It is based on the best available aerial photography and ground survey data.
 10. The map is a planimetric map and does not show any relief or elevation. It is based on the best available aerial photography and ground survey data.





CITY OF LONDON
 BUILDING Z-1
 SCHEDULE A
 as amended 28. 2012

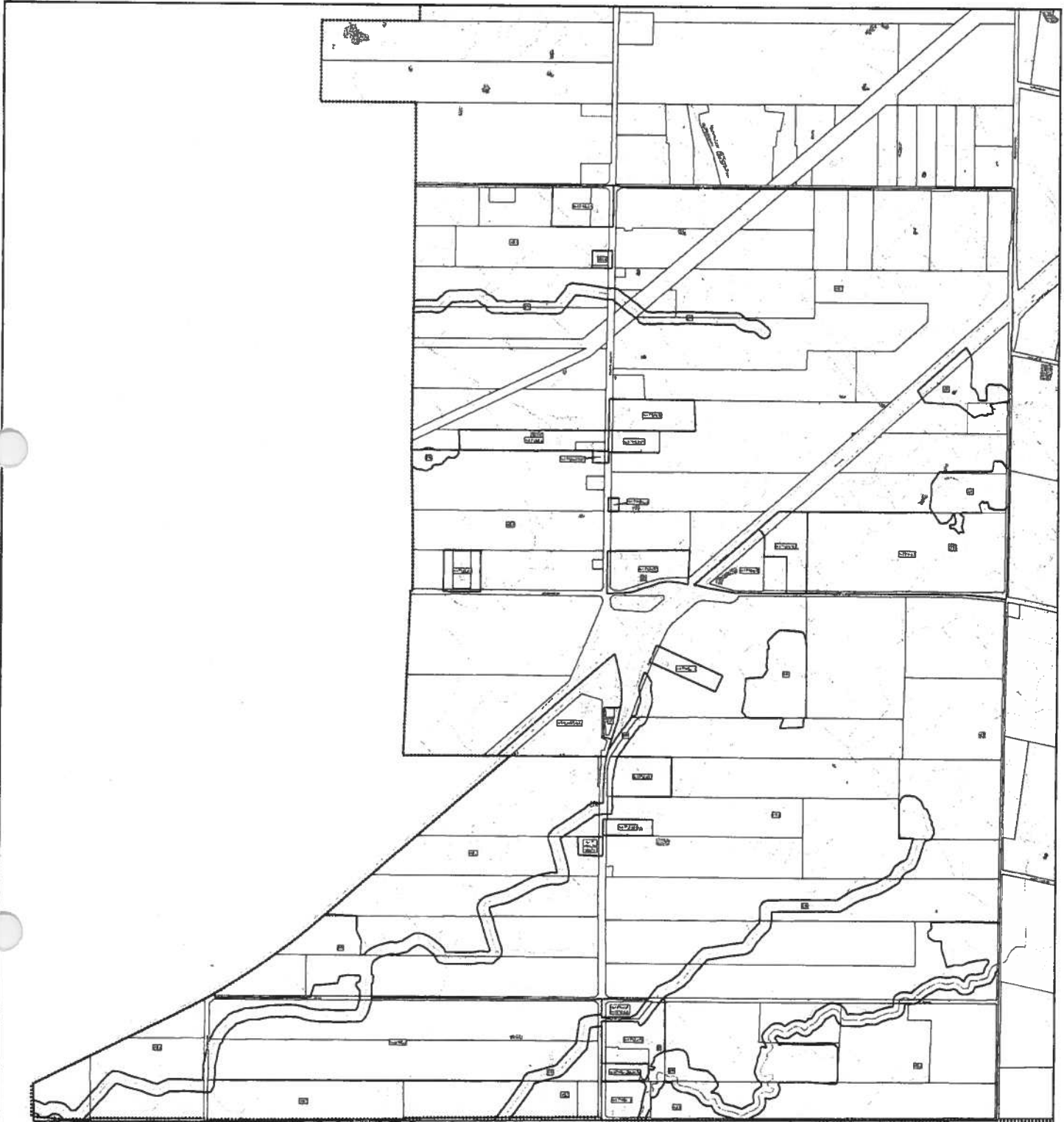


KEY MAP
 A116



NOTES
 1. The map shows the boundaries of the plots as they appear on the ground.
 2. The map shows the boundaries of the plots as they appear on the ground.
 3. The map shows the boundaries of the plots as they appear on the ground.
 4. The map shows the boundaries of the plots as they appear on the ground.
 5. The map shows the boundaries of the plots as they appear on the ground.
 6. The map shows the boundaries of the plots as they appear on the ground.
 7. The map shows the boundaries of the plots as they appear on the ground.
 8. The map shows the boundaries of the plots as they appear on the ground.
 9. The map shows the boundaries of the plots as they appear on the ground.
 10. The map shows the boundaries of the plots as they appear on the ground.





CITY OF LONDON
ZONING
BY-LAW NO. Z-1
SCHEDULE A

as of November 28, 2012



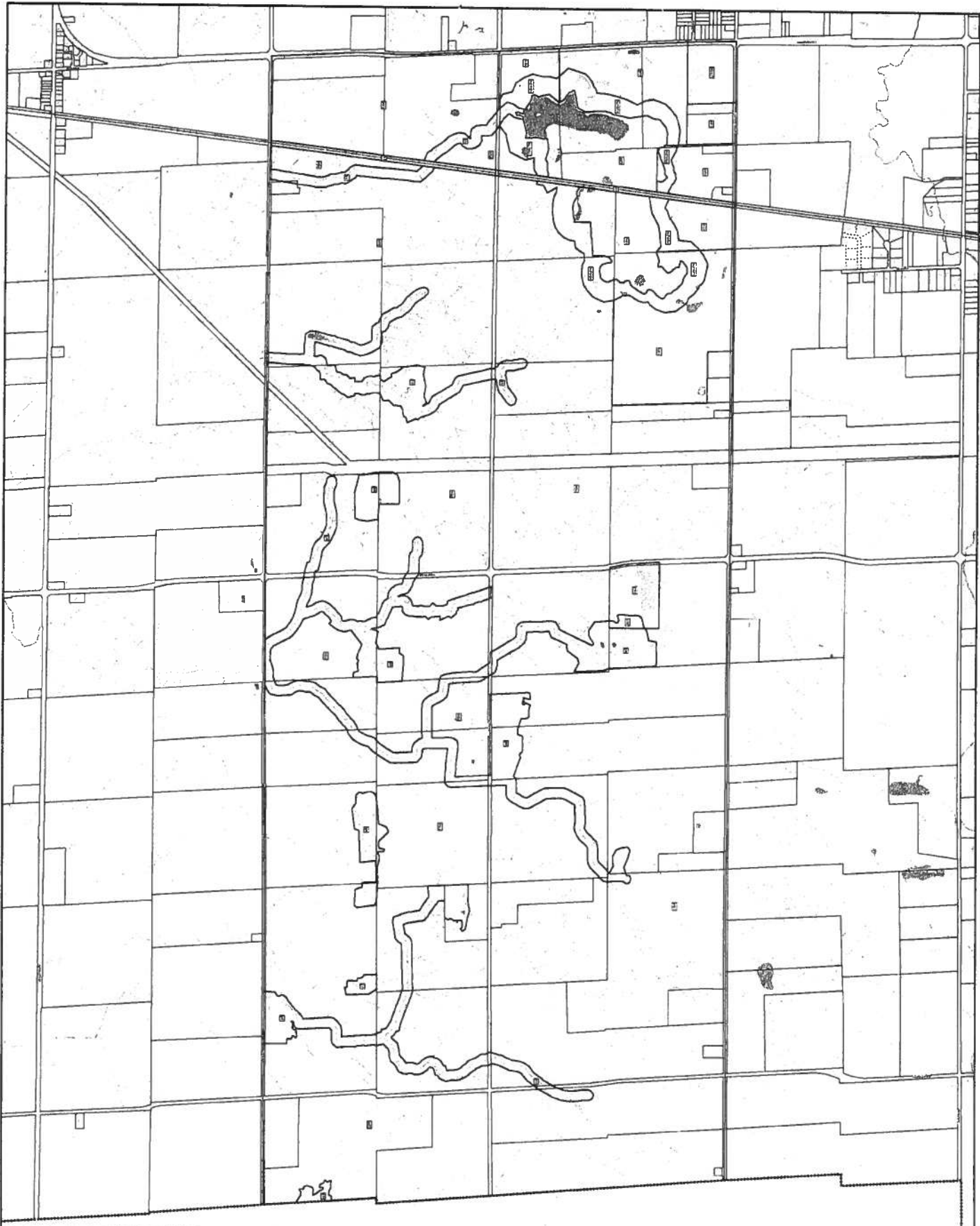
KEY MAP
A117

1:4,500



Disclaimer
The City of London Corporation and its officers and employees do not warrant or accept any liability for the accuracy or completeness of the information contained in this key map. The City of London Corporation and its officers and employees do not accept any liability for any loss or damage, whether direct or indirect, arising from the use of this key map. The City of London Corporation and its officers and employees do not accept any liability for any loss or damage, whether direct or indirect, arising from the use of this key map. The City of London Corporation and its officers and employees do not accept any liability for any loss or damage, whether direct or indirect, arising from the use of this key map.





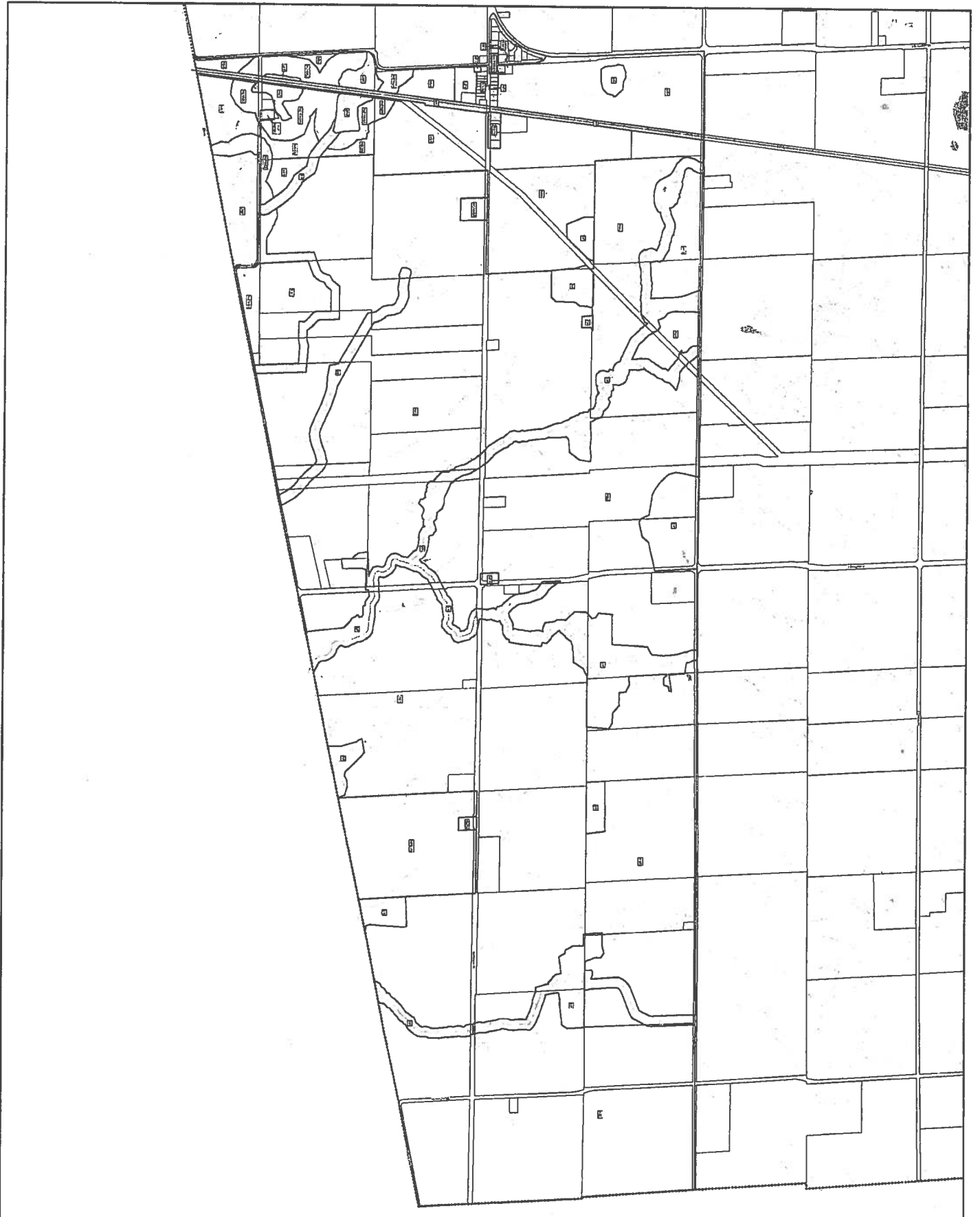
CITY OF LONDON
 ZONING
 BY-LAW NO. 2-1
 SCHEDULE A
 as amended 2012



KEY MAP
 A115



Legend
 The following table sets out the meaning of the various symbols and colors used on the map.
 The numbers in the table refer to the corresponding numbers on the map.
 The numbers in the table refer to the corresponding numbers on the map.
 The numbers in the table refer to the corresponding numbers on the map.
 The numbers in the table refer to the corresponding numbers on the map.



CITY OF LONDON
 BULKY NO. 2-4
 SCHEDULE A
 28th November 2012



KEY MAP
 A120

1:1,000



DISCLAIMER
 This Key Map is an abstract of the information contained in the original map. It is not intended to be used as a substitute for the original map. The City of London is not responsible for any errors or omissions in this Key Map. The City of London is not responsible for any loss or damage arising from the use of this Key Map. The City of London is not responsible for any loss or damage arising from the use of this Key Map.