



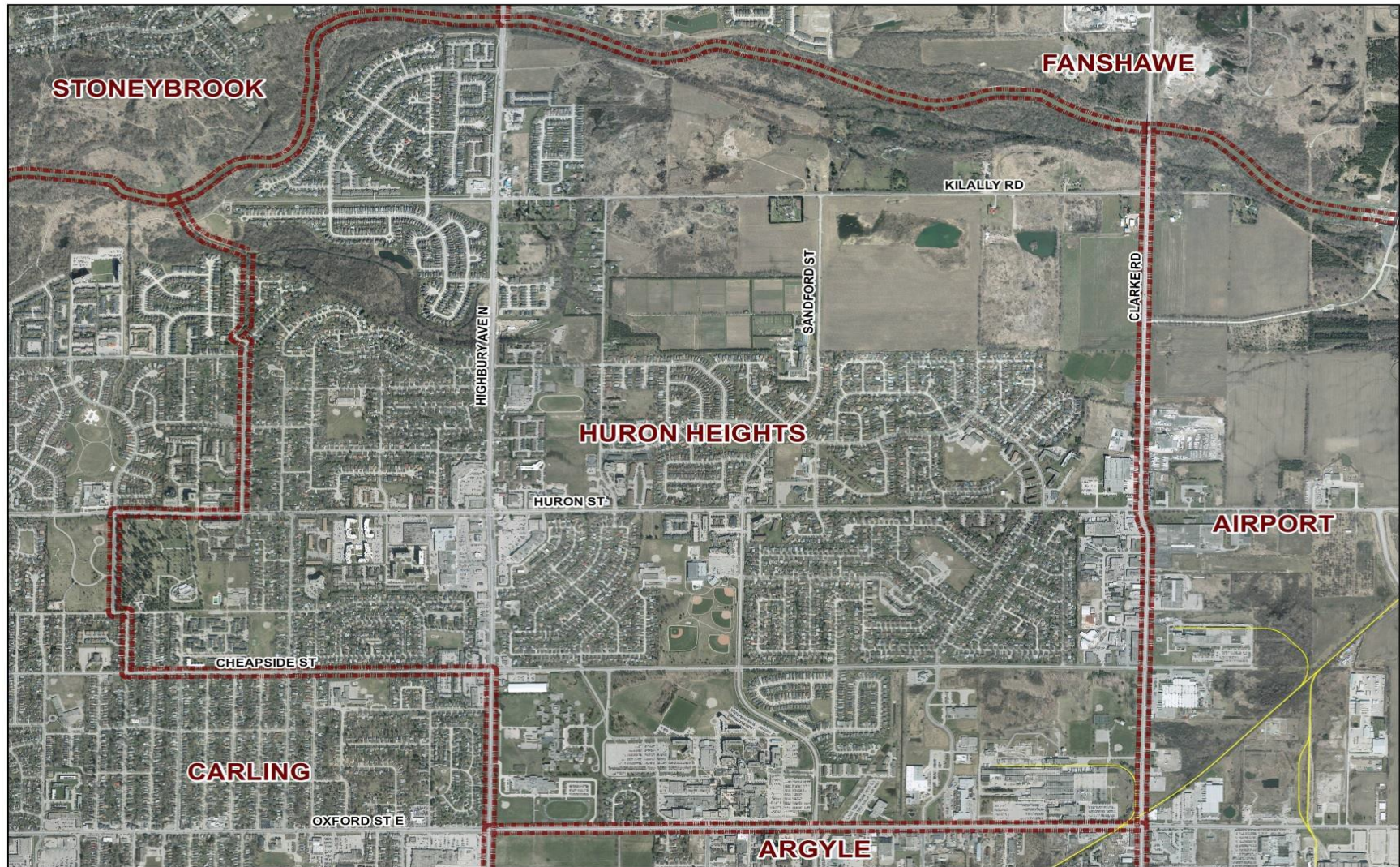
## City of London



### Huron Heights Neighbourhood Profile (1996-2016)

**For further information contact:**  
Policy and Planning Support  
Email: [neighbourhoods@london.ca](mailto:neighbourhoods@london.ca)

# Neighbourhood Profile -Huron Heights Planning District



Coordinate System: NAD 1983 UTM Zone 17N  
Projection: Transverse Mercator  
Datum: North American 1983

## Acknowledgment:

Profiles for all 42 neighbourhoods across the city were compiled by the Policy and Planning Division (Dr. Momodou Jeng, Laure Eldik, Randy MacTaggart, and Anna Oliveira). Thank you to Planning Services for providing the 2016 census data that informed the development of this work.

## Cautionary Notes:

- 1. Comparability of Data:** caution should be used when comparing NHS data (2011) to long-form census data (1996, 2001, 2006 and 2016), **especially when it comes to data for small geographies due to a difference in data collection methodologies employed by Statistics Canada.**
- 2. Percentage Totals:** some differences in the percentage totals (not adding up to 100%) are due to rounding and sampling errors, low response rates, and data suppression related to confidentiality rules adopted by Statistics Canada.
- 3. As a % of Neighbourhood/As a % of Active Labour Force:** some differences in percentage totals (not adding up to 100%) are based on the data being compared to the overall population of the neighbourhood or the overall active labour force as opposed to the actual number of respondents to the census question (e.g. population aged 15 years and over).
- 4. Changes from Previous Neighbourhood Profiles:** some revisions and omissions of data in the current Neighbourhood Profiles are based on the way in which data was aggregated by Statistics Canada (e.g. marital status) or questions not asked in the 2016 census (e.g. religion).

### Data Sources:

- 1996, 2001, 2006, 2011 and 2016 Census Data and 2011 NHS data, Statistics Canada, Ottawa.
- Customized City of London Planning District data extracted and tabulated by the City of London Planning – Urban Design and Geographic Information Systems Division and the City of London Policy and Planning Support Division.

## Legend:



is a decrease

— means no change



is an increase

N.A. means (Not available)

## Population Characteristics & Age Distribution

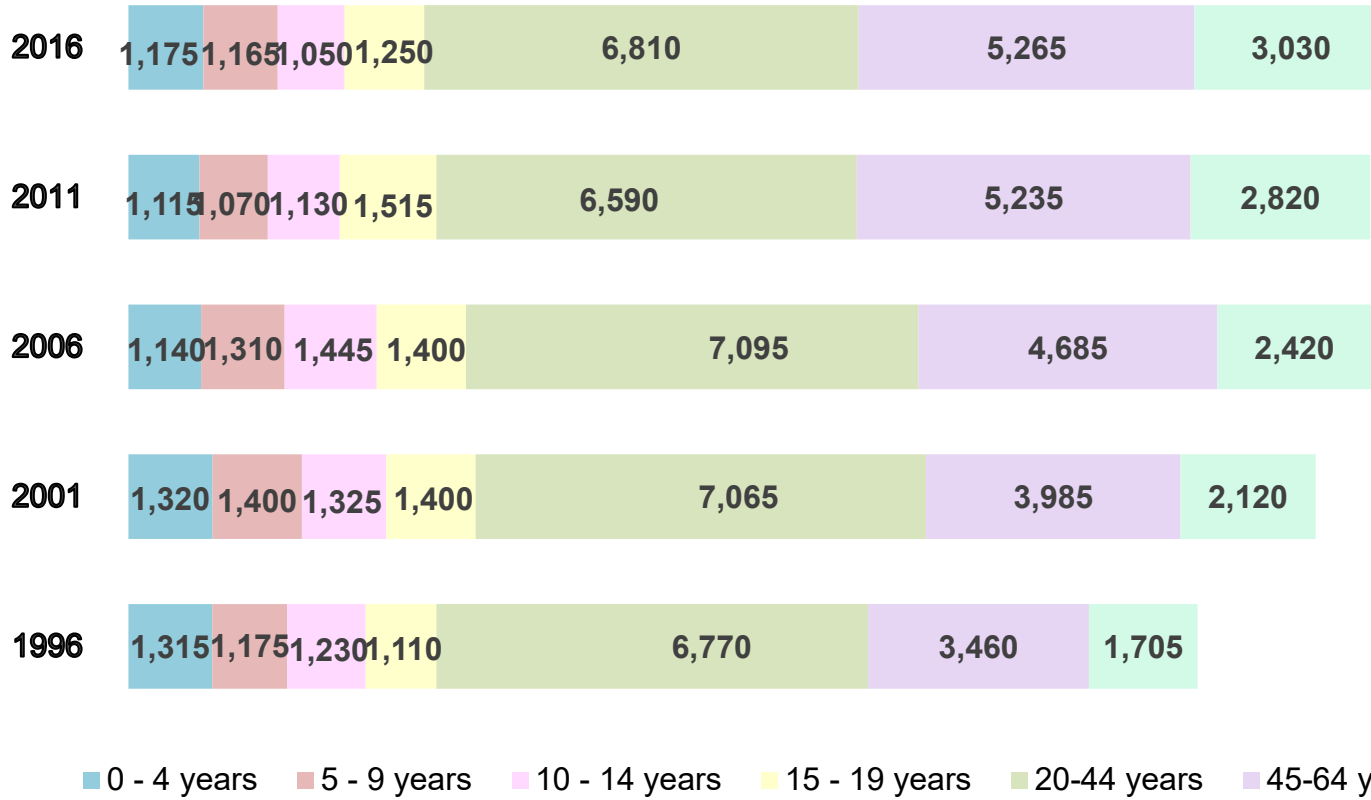
Huron Heights Neighbourhood	1996	2001	2006	2011	2016	Change From Previous Period (2011 to 2016)	
<b>Total Population</b>	<b>16,760</b>	<b>18,620</b>	<b>19,520</b>	<b>19,470</b>	<b>19,750</b>	↑	1%
Female	8,630	9,570	10,135	9,985	10,030	↑	<1%
Male	8,130	9,050	9,385	9,485	9,720	↑	2%

Age Structure	1996	2001	2006	2011	2016	Change From Previous Period (2011 to 2016)		As a % of Neighbourhood
<b>0 to 19</b>	<b>4,830</b>	<b>5,445</b>	<b>5,295</b>	<b>4,830</b>	<b>4,645</b>	↓	-4%	<b>24%</b>
0 to 4	1,315	1,320	1,140	1,115	1,175	↑	5%	6%
5 to 9	1,175	1,400	1,310	1,070	1,165	↑	9%	6%
10 to 14	1,230	1,325	1,445	1,130	1,050	↓	-7%	5%
15 to 19	1,110	1,400	1,400	1,515	1,250	↓	-17%	6%
<b>20 to 44</b>	<b>6,770</b>	<b>7,065</b>	<b>7,095</b>	<b>6,590</b>	<b>6,810</b>	↑	3%	<b>34%</b>
<b>45 to 64</b>	<b>3,460</b>	<b>3,985</b>	<b>4,685</b>	<b>5,235</b>	<b>5,265</b>	↑	1%	<b>27%</b>
<b>65+</b>	<b>1,705</b>	<b>2,120</b>	<b>2,420</b>	<b>2,820</b>	<b>3,030</b>	↑	7%	<b>15%</b>
<b>Median Age</b>	<b>N.A.</b>	<b>N.A.</b>	<b>N.A.</b>	<b>38</b>	<b>38.1</b>			

2016 Census Age Cohort Breakout	Male	Female	Total	As a % of Neighbourhood
0 to 4	605	570	1,175	6%
5 to 9	610	550	1,160	6%
10 to 14	550	500	1,050	5%
15 to 19	660	595	1,255	6%
20 to 24	1,055	790	1,845	9%
25 to 29	630	735	1,365	7%
30 to 34	625	660	1,285	7%
35 to 39	565	580	91,145	6%
40 to 44	505	660	1,165	6%
45 to 49	655	665	1,320	7%
50 to 54	770	660	1,430	7%
55 to 59	665	790	1,455	7%
60 to 64	510	550	1,060	5%
65 to 69	450	530	980	5%
70 to 74	330	410	740	4%
75 to 79	280	365	645	3%
80 to 84	160	240	400	2%
85+	85	180	265	1%
<b>Total</b>	<b>9,710</b>	<b>10,030</b>	<b>19,740<sup>1</sup></b>	

<sup>1</sup> There is likely to be some differences due to rounding and sampling errors.

### Age Cohort Breakout 1996 - 2016

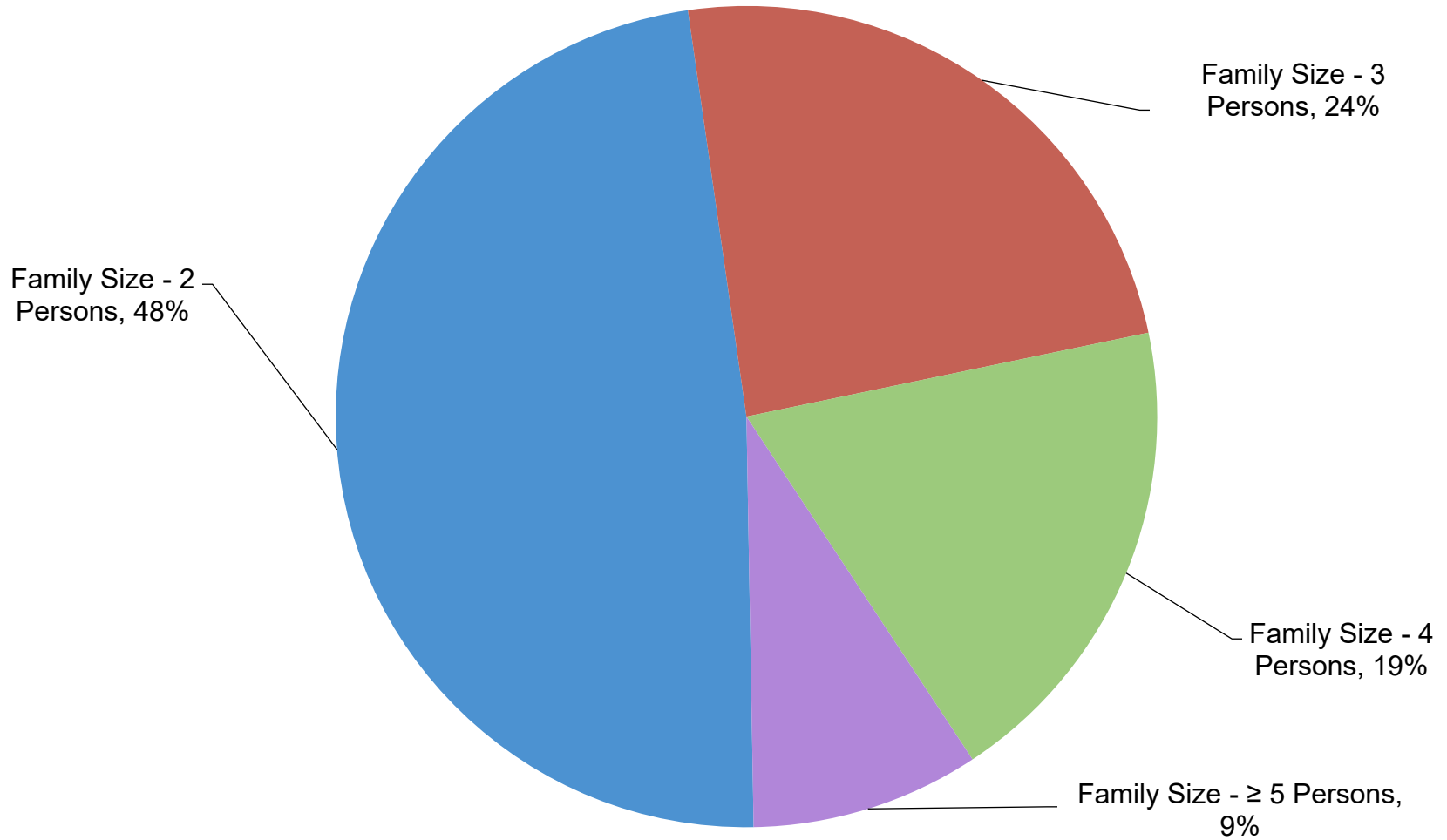


Marital Status	1996	2001	2006	2011	2016	Change From Previous Period (2011 to 2016)		As a % of Neighbourhood
Single	3,980	4,770	5,385	5,095	5,400	↑	6%	27%
Married	6,805	7,380	7,460	7,015	6,810	↓	-3%	34%
Common-Law	800	1,090	1,270	1,410	1,565	↑	11%	8%
Divorced	960	1,075	1,220	1,090	1,085	—		5%
Separated	580	565	665	600	600	—		3%
Widowed	710	790	900	955	905	↓	-5%	5%
Citizenship, Immigration & Ethnic Identity	1996	2001	2006	2011	2016	Change From Previous Period (2011 to 2016)		As a % of Neighbourhood
<b>Citizenship</b>								
Canadian Citizens	15,620	17,790	18,620	18,000	18,350	↑	2%	93%
Non-Canadian Citizens	1,140	835	900	940	1,400	↑	49%	7%
<b>Immigration Status</b>								
Canadian Born Population	12,320	14,050	14,530	14,245	14,565	↑	2%	74%
Foreign Born Population	4,400	4,480	4,875	4,585	4,745	↑	3%	24%
Visible Minority Population	2,640	3,320	4,150	4,020	5,205	↑	29%	26%
Indigenous Identity Population	275	315	395	710	690	↑	-3%	3%

Family Composition	1996	2001	2006	2011	2016	Change From Previous Period (2011 to 2016)		As a % of Census Families
<b>Number of Census Families</b>	<b>4,700</b>	<b>5,300</b>	<b>5,460</b>	<b>5,405</b>	<b>5,360</b>	↓	-1%	
Family Size - 2 Persons	2,160	2,520	2,570	2,670	2,585	↓	-3%	48%
Family Size - 3 Persons	1,010	1,115	1,265	1,290	1,295	—		24%
Family Size - 4 Persons	1,045	1,115	1,095	965	1,000	↑	4%	19%
Family Size - ≥ 5 Persons	490	595	530	485	485	—		9%
<b>Census Family - Average Size</b>	<b>3.0</b>	<b>3.0</b>	<b>3.0</b>	<b>2.9</b>	<b>2.9</b>			



### 2016 Family Composition

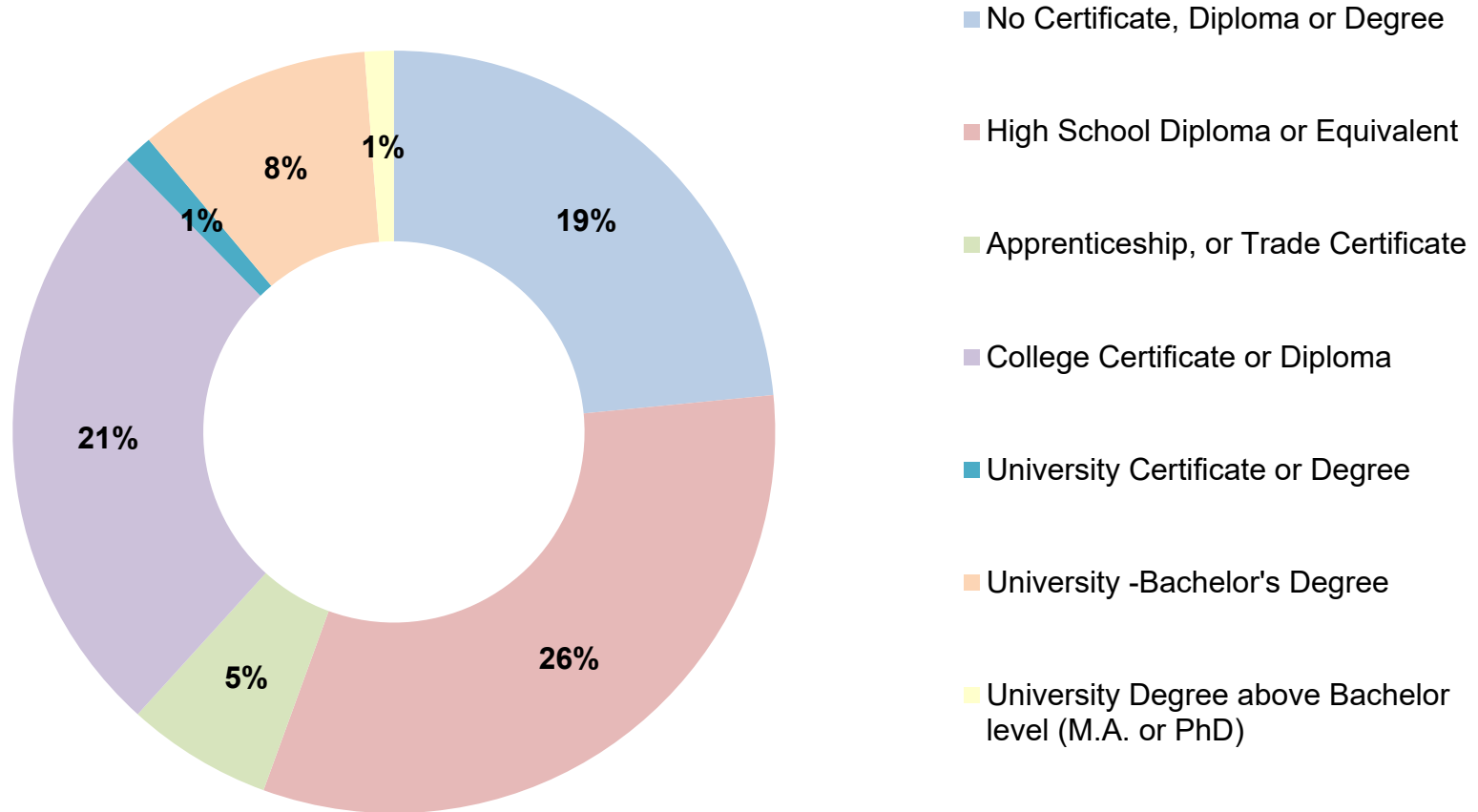


Family Structure & Number of Children	1996	2001	2006	2011	2016	Change From Previous Period (2011 to 2016)	
<b>Couples (Married or Common Law)<sup>2</sup></b>	<b>3,785</b>	<b>4,200</b>	<b>4,310</b>	<b>4,110</b>	<b>4,135</b>	↑	1%
Without Children	1,660	1,905	1,950	1,915	1,865	↓	-3%
With Children	2,115	2,290	2,365	2,200	2,270	↑	3%
<b>Lone Parent Families</b>	<b>920</b>	<b>1,100</b>	<b>1,150</b>	<b>1,295</b>	<b>1,230</b>	↓	-5%
1 Child	495	615	625	755	715	↓	-5%
2 Children	290	305	380	370	370	—	
≥ 3 Children	135	185	140	165	145	↓	-12%
<b>Male Headed</b>	<b>140</b>	<b>100</b>	<b>185</b>	<b>240</b>	<b>190</b>	↓	-21%
<b>Female Headed</b>	<b>785</b>	<b>995</b>	<b>970</b>	<b>1,055</b>	<b>1,035</b>	↓	-2%

<sup>2</sup> 2016 Census combines data for Married or Common Law couples without/with Children.

Educational Attainment by Credential	1996	2001	2006	2011	2016	Change From Previous Period (2011 to 2016)		As a % of Neighbourhood
No Certificate, Diploma or Degree	N.A.	2,685	3,020	3745	3,775	↑	1%	19%
High School Diploma or Equivalent	N.A.	N.A.	4,745	5,000	5,045	↑	1%	26%
Apprenticeship, or Trade Certificate	N.A.	1,530	1,385	1,505	1,045	↓	-31%	5%
College Certificate or Diploma	N.A.	2,590	3,280	3,610	4,160	↑	15%	21%
University Certificate or Degree	N.A.	N.A.	N.A.	380	225	↓	-41%	1%
University - Bachelor's Degree	N.A.	N.A.	895	1,145	1,495	↑	31%	8%
University Degree above bachelor level (MA or PhD)	N.A.	N.A.	305	465	135	↓	-71%	1%

### Education Attainment by Credential

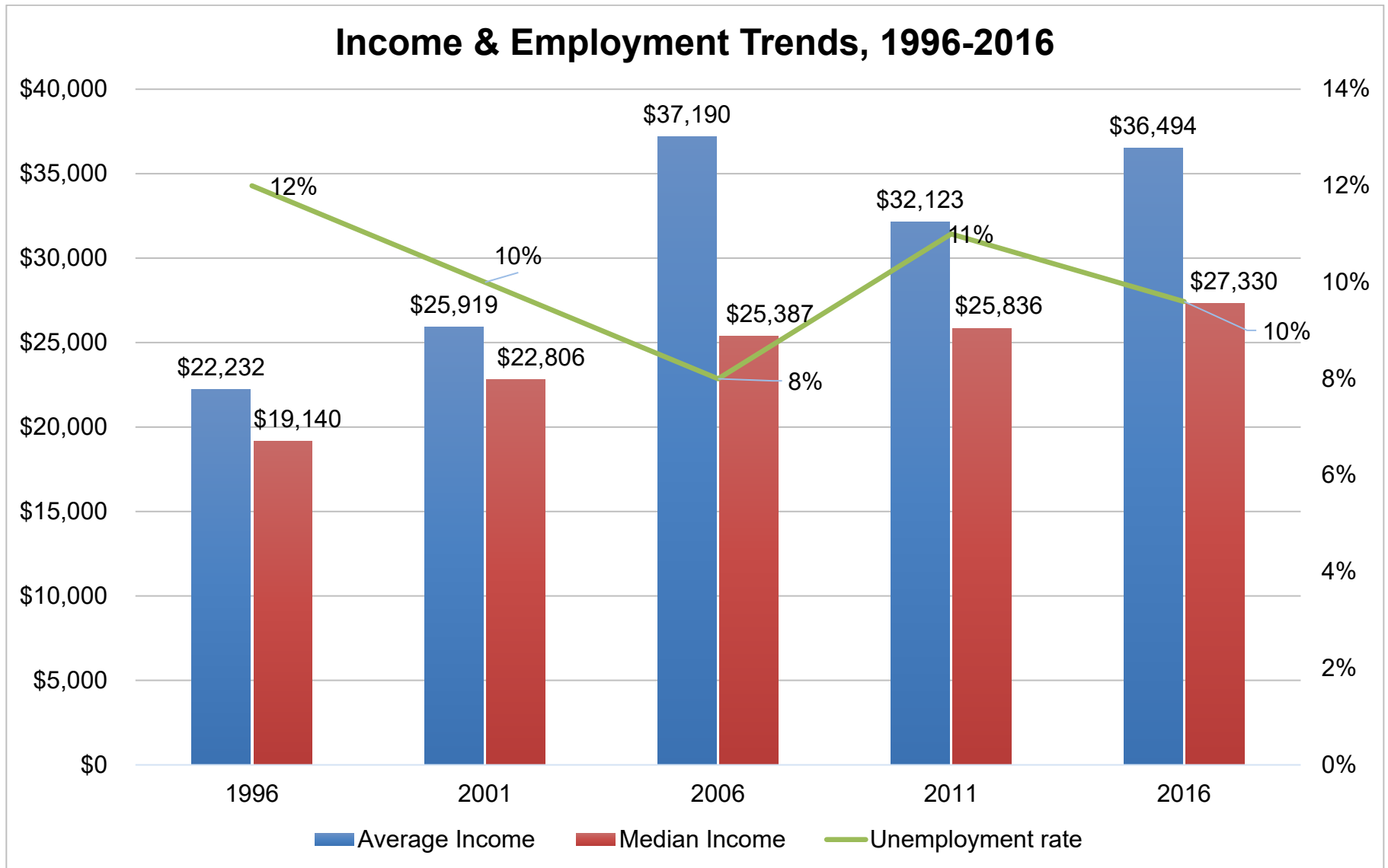


Housing by Structure Type & Tenure	1996	2001	2006	2011	2016	Change From Previous Period (2011 to 2016)		As a % of Total Occupied Dwellings
<b>Total Occupied Dwellings</b>	<b>6,440</b>	<b>7,265</b>	<b>7,600</b>	<b>7,805</b>	<b>8,085</b>	↑	4%	
Single-Detached	2,990	3,610	3,885	3,895	4,005	↑	3%	50%
Semi-Detached	340	360	330	350	350	—		4%
Row House	935	1,030	1,075	1,105	1,130	↑	2%	14%
Duplex	50	15	65	75	65	↓	-13%	1%
Apartment < 5 Storeys	895	895	945	1,045	1,140	↑	9%	14%
Apartment ≥ 5 Storeys	1,230	1,355	1,305	1,320	1,395	↑	6%	17%
<b>Number of Owned Dwellings</b>	<b>3,365</b>	<b>4,060</b>	<b>4,525</b>	<b>4,465</b>	<b>4,490</b>	↑	1%	
Owned as a % of Total	52%	56%	60%	57%	56%	↓		
<b>Number of Rented Dwellings</b>	<b>3,075</b>	<b>3,205</b>	<b>3,075</b>	<b>3,340</b>	<b>3,590</b>	↑	7%	
Rented as a % of Total	48%	44%	40%	43%	44%	↑		
Average # of Rooms	6	6	6	6.3	6.2	↓		
Average Gross Rent	\$533	\$551	\$627	\$702	\$775	↑	10%	
Average Value of Dwelling	\$138,211	\$143,057	\$200,283	\$231,279	\$255,317	↑	10%	

Labour Market Indicators	1996	2001	2006	2011	2016	Change From Previous Period (2011 to 2016)		As a % of Neighbourhood
<b>Total Labour Force ≥ 15 years</b>	<b>8,130</b>	<b>9,200</b>	<b>9,810</b>	<b>9,680</b>	<b>9,990</b>	↑	3%	<b>51%</b>
Female	3,925	4,820	4,810	4,740	4,755	↑	<1%	24%
Male	4,205	4,380	5,000	4,935	5,235	↑	6%	27%
<b>Unemployment Rate</b>	<b>12%</b>	<b>10%</b>	<b>8%</b>	<b>11%</b>	<b>10%</b>	↓		
Female	13%	9%	9%	11.1%	8.5%	↓		
Male	11%	9%	6%	10.9%	10.5%	↓		
<b>Employment Rate</b>	<b>N.A.</b>	<b>N.A.</b>	<b>N.A.</b>	<b>57.2%</b>	<b>55.3%</b>	↓		
<b>Participation Rate</b>	<b>62%</b>	<b>63%</b>	<b>64%</b>	<b>61.1%</b>	<b>61.1%</b>	—		
Female	58%	58%	58%	58.1%	56.6%	↓		
Male	68%	69%	71%	64.3%	65.8%	↑		

Income Characteristics of Economically Active Population <sup>3</sup>	1996	2001	2006	2011	2016	Change From Previous Period (2011 to 2016)	
<b>Individual Income</b>							
Average Income	\$22,232	\$25,919	\$37,190	\$32,123	\$36,494	↑	14%
Median Income	\$19,140	\$22,806	\$25,387	\$25,836	\$27,330	↑	6%
<b>Income by Gender</b>							
Average Income – Male	\$27,121	\$31,203	\$50,002	\$36,844	\$42,118	↑	14%
Average Income- Female	\$17,344	\$20,635	\$25,495	\$27,629	\$31,213	↑	13%
Median Income – Male	\$23,954	\$29,149	\$32,082	\$29,748	\$31,075	↑	4%
Median Income - Female	\$14,326	\$16,464	\$19,911	\$22,908	\$24,983	↑	9%
<b>Household Income</b>							
Average Household Income	\$41,140	\$57,589	\$71,483	\$61,118	\$69,872	↑	14%
Median Household Income	\$35,400	\$46,153	\$50,006	\$48,899	\$53,313	↑	9%
<b>Family Income</b>							
Average Family Income	\$46,855	\$69,121	\$85,753	\$71,288	\$79,125	↑	11%
Median Family Income	\$42,998	458,687	\$61,322	\$62,561	\$69,081	↑	10%
<b>Lone-Parent Families</b>							
Average Family Income	N.A.	N.A.	N.A.	\$43,809	\$48,773	↑	11%
Median Family Income	N.A.	N.A.	N.A.	\$35,708	\$40,598	↑	14%

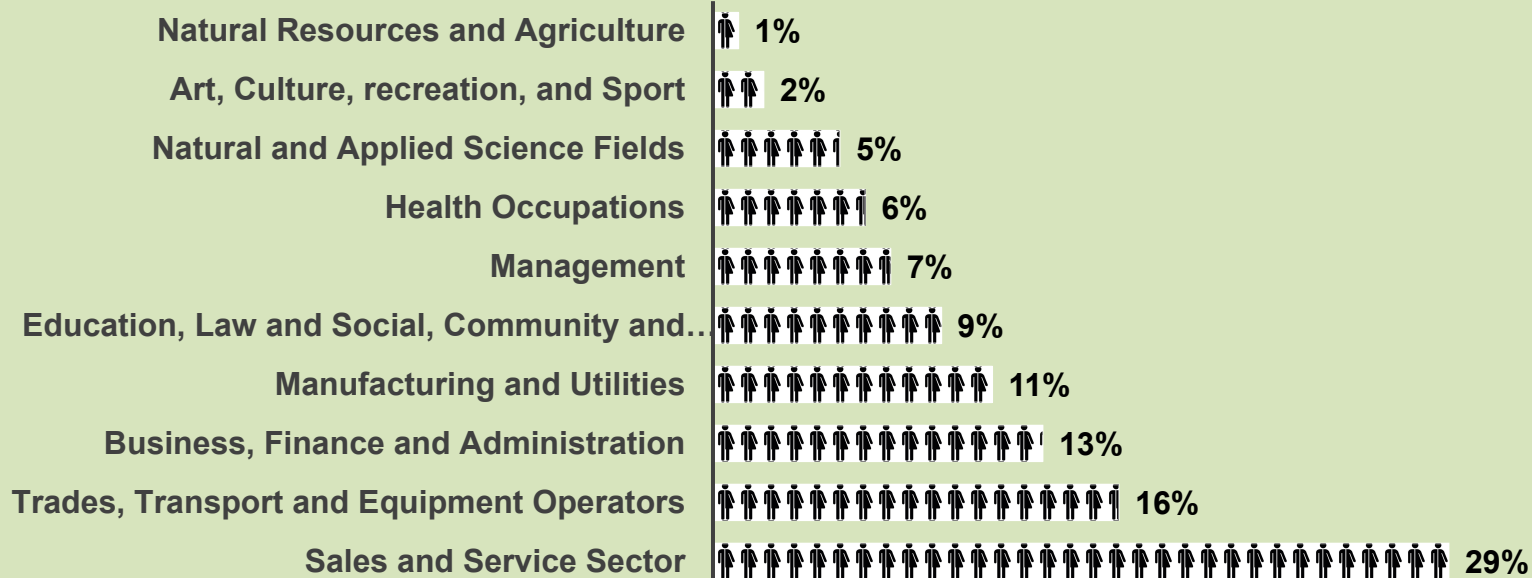
<sup>3</sup> Data Note: Income figures based on previous reporting year and reflect gross earnings (1995, 2000, 2005, 2010 & 2015).





Labour Force by National Occupational Classification	1996	2001	2006	2011	2016	Change From Previous Period (2011 to 2016)		As a % of Huron Heights Active Labour Force
Management	490	780	810	680	655	↓	-4%	7%
Business, Finance and Administration	1,440	1,450	1,590	1,260	1,270	↑	1%	13%
Natural and Applied Science Fields	245	500	525	425	475	↑	12%	5%
Health Occupations	420	485	710	515	605	↑	17%	6%
Education, Law and Social, Community and Government Services	270	520	510	905	860	↓	-5%	9%
Art, Culture, recreation, and Sport	115	120	205	135	190	↑	41%	2%
Sales and Service Sector	2,465	2,445	2,585	2,990	2,910	↓	-3%	29%
Trades, Transport and Equipment Operators	1,155	1,535	1,585	1,350	1,550	↑	15%	16%
Natural Resources and Agriculture	135	90	125	100	110	↑	10%	1%
Manufacturing and Utilities	955	960	1,170	885	1,055	↑	19%	11%

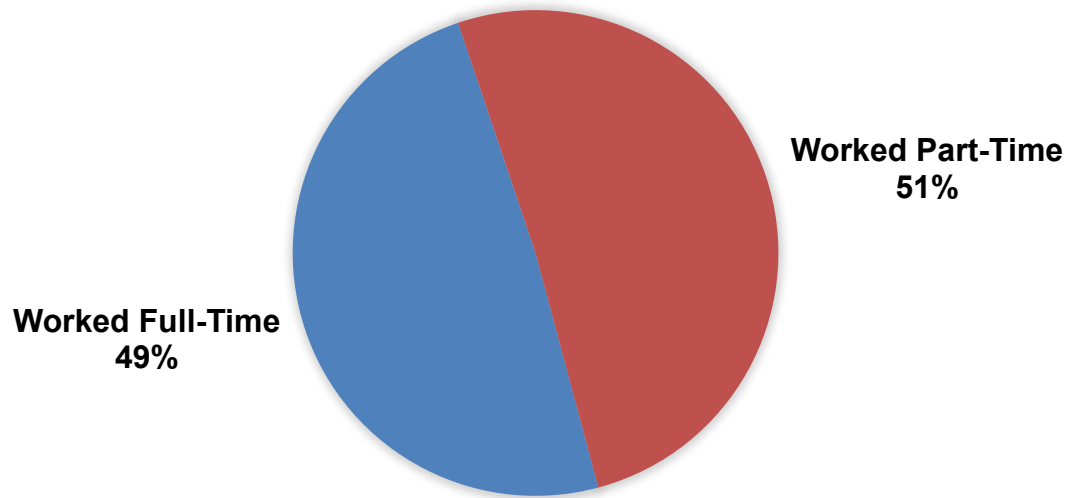
## Employment Trends by Occupation Breakout - 2016



Class of Worker	1996	2001	2006	2011	2016	Change From Previous Period		As a % of Neighbourhood
						Direction	Percentage	
<b>Employee</b>	<b>7,125</b>	<b>8,205</b>	<b>8,990</b>	<b>8,775</b>	<b>8,890</b>	↑	1%	<b>45%</b>
Female	3,450	4,005	4,365	4,390	4,315	↓	-2%	22%
Male	3,675	4,205	4,630	4,380	4,575	↑	4%	23%
<b>Self-Employed</b>	<b>560</b>	<b>620</b>	<b>790</b>	<b>475</b>	<b>775</b>	↑	<b>63%</b>	<b>4%</b>
Female	215	225	310	125	290	↑	132%	1%
Male	345	400	485	350	480	↑	37%	2%

Employment Status	1996	2001	2006	2011	2016	Change From Previous Period (2011 to 2016)		As a % of Argyle Active Labour Force
Worked Full-Time in 2015	N.A.	N.A.	N.A.	6,865	4,940	↓	-28%	49%
Worked Part-Time in 2015	N.A.	N.A.	N.A.	2,105	5,045	↑	140%	51%

### Employment Status, 2015 Reference Period



Mode of Transport to Work	1996	2001	2006	2011	2016	Change From Previous Period (2011 to 2016)		As a % of Huron Heights Active Labour Force
Automobile - As a Driver	5,060	6,235	6,475	5,975	6,500	↑	9%	65%
Car-Pool	575	585	1,060	685	690	↑	1%	7%
Public Transportation	605	710	760	995	955	↓	-4%	10%
Walked or Bicycled	490	415	440	525	420	↓	-20%	4%
Other Modes	40	90	80	65	85	↑	31%	1%

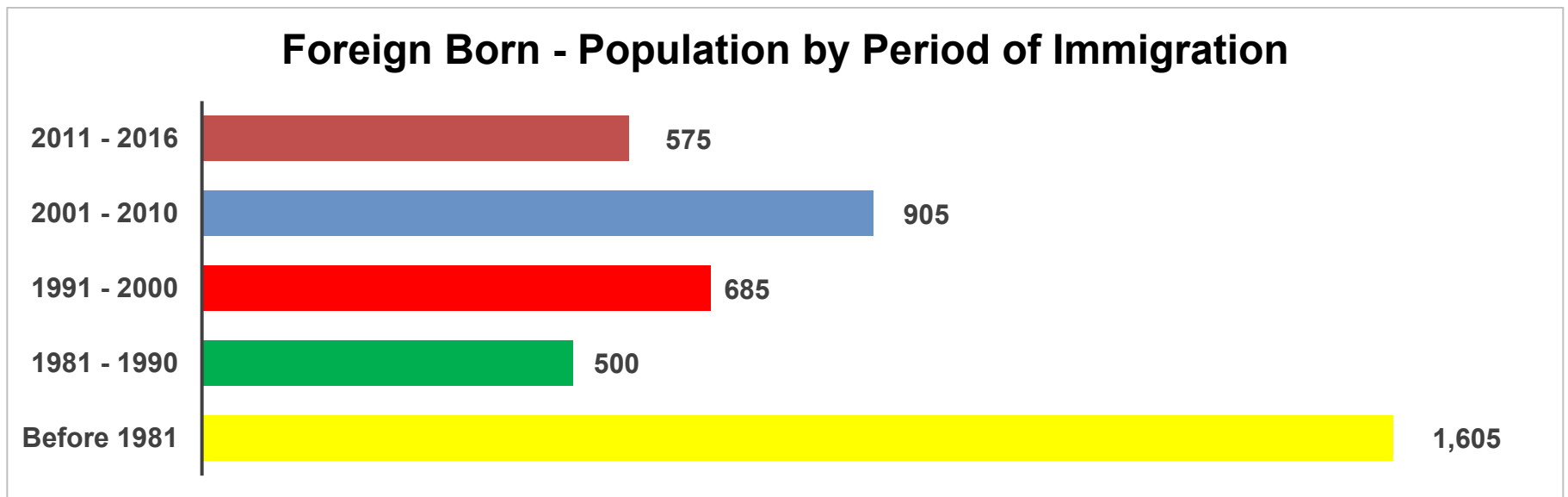
Place of Work	1996	2001	2006	2011	2016	Change From Previous Period (2011 to 2016)		As a % of Neighbourhood
Worked at Home	385	245	395	360	380	↑	6%	2%
Worked at a Fixed Address	6,290	7,310	8,010	7,250	7,695	↑	6%	39%
No Fixed Workplace Address	460	740	815	995	955	↓	-4%	5%
Worked within Municipality	5,595	6,505	7,190	N.A.	6,740	N.A.		34%
Work in a different Municipality	690	810	825	N.A.	660	N.A.		3%
Worked outside Canada	15	30	20	0	10	↑		<1%

Mobility/Migration Status	1996	2001	2006	2011	2016	Change From Previous Period (2011 to 2016)		As a % of Neighbourhood
Lived at the same address 5 years ago	7,600	8,190	10,000	10,825	11,215	↑	4%	57%
Moved sometime within the last 5 years	7,840	9,115	8,375	7,035	7,360	↑	5%	37%
<b>Internal Migrants</b>	<b>1,740</b>	<b>2,460</b>	<b>2,140</b>	<b>1,805</b>	<b>1,770</b>	↓	-2%	<b>9%</b>
- Intra-provincial	1,510	2,460	1,780	1,615	1,475	↓	-9%	7%
- Inter-provincial	225	370	355	185	295	↑	59%	1%
<b>External Migrants</b>	<b>660</b>	<b>460</b>	<b>580</b>	<b>480</b>	<b>845</b>	↑	76%	<b>4%</b>
Lived at the same address 1 years ago	13,505	14,820	16,270	16,055	16,710	↑	4%	85%
Moved sometime within the last year	3,020	3,605	3,025	2,685	2,795	↑	4%	14%
<b>Internal Migrants</b>	<b>685</b>	<b>850</b>	<b>705</b>	<b>710</b>	<b>715</b>	↑	1%	<b>4%</b>
- Intra-provincial	525	705	615	645	570	↓	-12%	3%
- Inter-provincial	60	150	90	70	145	↑	107%	1%
<b>External Migrants</b>	<b>105</b>	<b>70</b>	<b>115</b>	<b>85</b>	<b>380</b>	↑	347%	<b>2%</b>

Place of Birth by Region	2011	2016	Change From Previous Period (2011 to 2016)		As a % of Neighbourhood
<b>Total Immigrant Population</b>	<b>4,585</b>	<b>4,745</b>	↑	3%	<b>24%</b>
North America (US only)	120	95	↓	-21%	<1%
Africa	295	280	↓	-5%	1%
Asia	2,120	2,385	↑	13%	12%
Caribbean	45	N.A.	N.A.		N.A.
Central and South America	120	425	↑	254%	2%
Oceania and other places of birth	N.A.	15	N.A.		<1%
Europe	1,820	1,545	↓	-15%	8%
<b>Recent Immigrants</b>	<b>470</b>	<b>670</b>	↑	<b>43%</b>	<b>3%</b>
North America (US only)	20	10	↓	-50%	<1%
Africa	40	40	—		<1%
Asia	335	525	↑	57%	3%
Caribbean	0	N.A.	N.A.		N.A.
Central and South America	10	40	↑	300%	<1%
Oceania and other places of birth	N.A.	10	N.A.		<1%
Europe	50	55	↑	10%	<1%

<b>Immigration by Place of Birth 2011</b>	<b>2011</b>	<b>As a % of Neighbourhood 2011</b>	<b>Immigration by Place of Birth 2016</b>	<b>2016</b>	<b>As a % of Neighbourhood 2016</b>
<b>1. Viet Nam</b>	695	4%	<b>1. Viet Nam</b>	520	3%
<b>2. United Kingdom</b>	365	2%	<b>2. Philippines</b>	385	2%
<b>3. Portugal</b>	260	1%	<b>3. United Kingdom</b>	345	2%
<b>4. Poland</b>	245	1%	<b>4. Syria</b>	275	1%
<b>5. Iraq</b>	180	1%	<b>5. Poland</b>	235	1%
<b>6. Philippines</b>	160	1%	<b>6. India</b>	145	1%
<b>7. Netherlands</b>	135	1%	<b>7. Germany</b>	125	1%
<b>8. Germany</b>	125	<1%	<b>8. Portugal</b>	115	1%
<b>9. United States</b>	120	<1%	<b>9. Netherlands</b>	100	1%
<b>10. Italy</b>	90	<1%	<b>10. Iraq</b>	100	1%

Period of Immigration	1996	2001	2006	2011	2016	Change From Previous Period (2011 to 2016)		As a % of Neighbourhood
Before 1981	N.A.	N.A.	1,520	1,470	1,215	↓	-17%	6%
1981 to 1990	N.A.	N.A.	1,320	995	970	↓	-3%	5%
1991 to 2000	N.A.	N.A.	1,260	1,070	790	↓	-26%	4%
2001 to 2010	N.A.	N.A.	N.A.	N.A.	1,100	N.A.		6%
2011 to 2016	N.A.	N.A.	N.A.	N.A.	670	N.A.		3%





Language	1996	2001	2006	2011	2016	Change From Previous Period (2011 to 2016)	As a % of Neighbourhood
<b>Knowledge of Official Languages</b>							
English Only	15,475	17,160	17,865	17,690	18,005	↑ 2%	91%
French Only	0	20	15	30	25	↓ -17%	<1%
English and French	50	995	1,165	1,175	1,115	↓ -5%	6%
Neither English or French	420	445	475	440	600	↑ 36%	3%
<b>Language Spoken Most Often at Home</b>							
English	13,850	14,670	16,185	18,495	15,915	↓ -14%	81%
French	35	60	155	115	120	↑ 4%	1%
Non-Official Language	2,415	1,615	2,850	2,540	2,650	↑ 4%	13%
<b>Mother Tongue <sup>4</sup></b>							
English	12,440	13,900	14,130	14,205	14,230	↑ <1%	72%
French	200	270	350	310	270	↓ -13%	1%
Non-Official Language	3,720	4,215	4,835	4,445	4,715	↑ 6%	24%

<sup>4</sup> Statistics Canada defines 'mother tongue' as the first language learned in childhood and still understood by the individual at the time of census reporting.

Top Non-Official Languages Spoken At Home <sup>5</sup>	2016	As a % of Neighbourhood
Vietnamese	385	2%
Khmer (Cambodian)	345	2%
Assyrian Neo-Aramaic	285	1%
Arabic	205	1%
Polish	145	1%
Spanish	145	1%
Tagalog (Pilipino, Filipino)	100	1%
Albanian	100	1%
Russian	85	<1%
Cantonese	75	<1%

<sup>5</sup> Data Note: The 2011 Neighbourhood profiles data reported on languages was discontinued in 2016; therefore, cannot be compared to 2016 data.