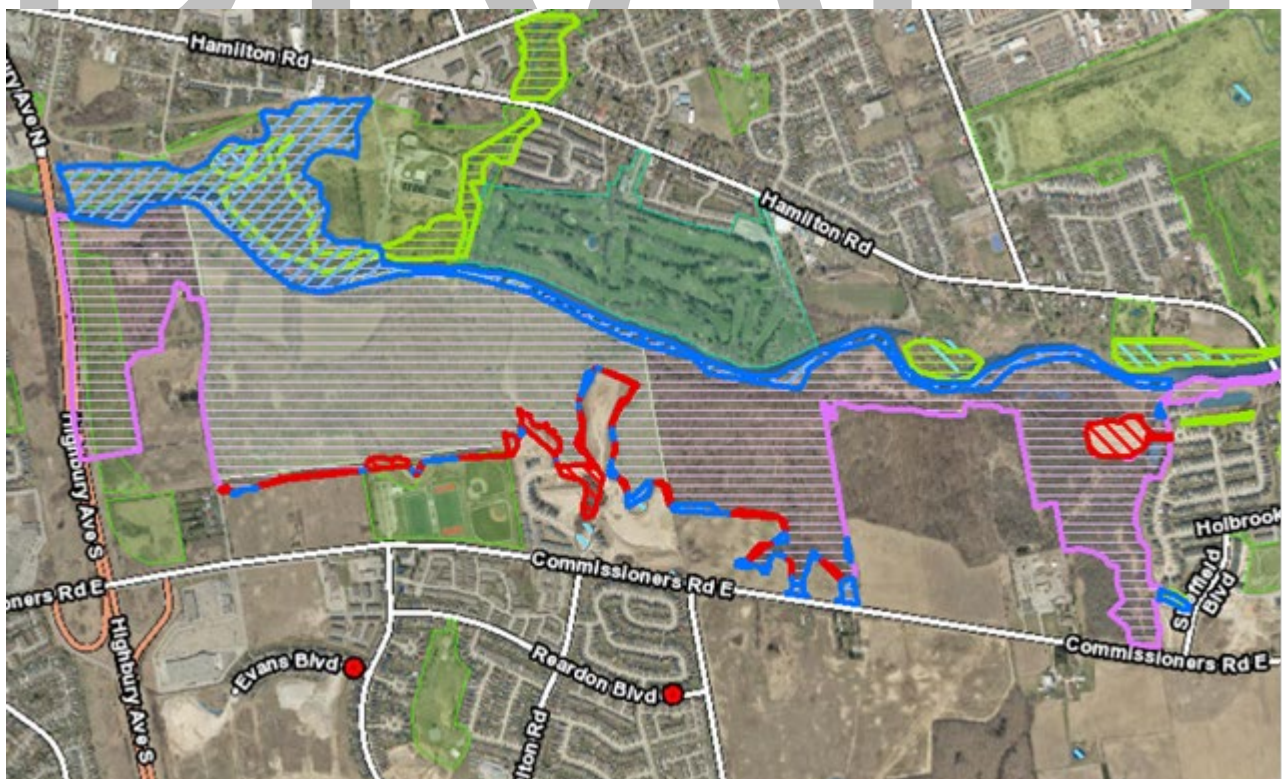


Purple Hatching: Existing, and remaining, natural heritage feature
 Blue Hatching: Added lands to Map 5 – Natural Heritage
 Red Hatching: Deleted lands from Map 5 – Natural Heritage



1. City of London; 1410 Lawson Drive
 Added: Significant Woodlands and Wetlands



2. Several Addresses on Norlan Ave, Meadowlily Rd North, Meadowlily Rd South, Meadowlark Ridge, and Commissioners Road East; Previous Application: 39T00517

Removed: ESA boundary adjustment to match previous zoning update
 Added: ESA boundary adjustment to match previous zoning update, with significant portions added to the north and east of the current ESA boundary



- 3. 220 Oriole Lane; Previous Application: 39T-17502
Added: ESA boundary extended

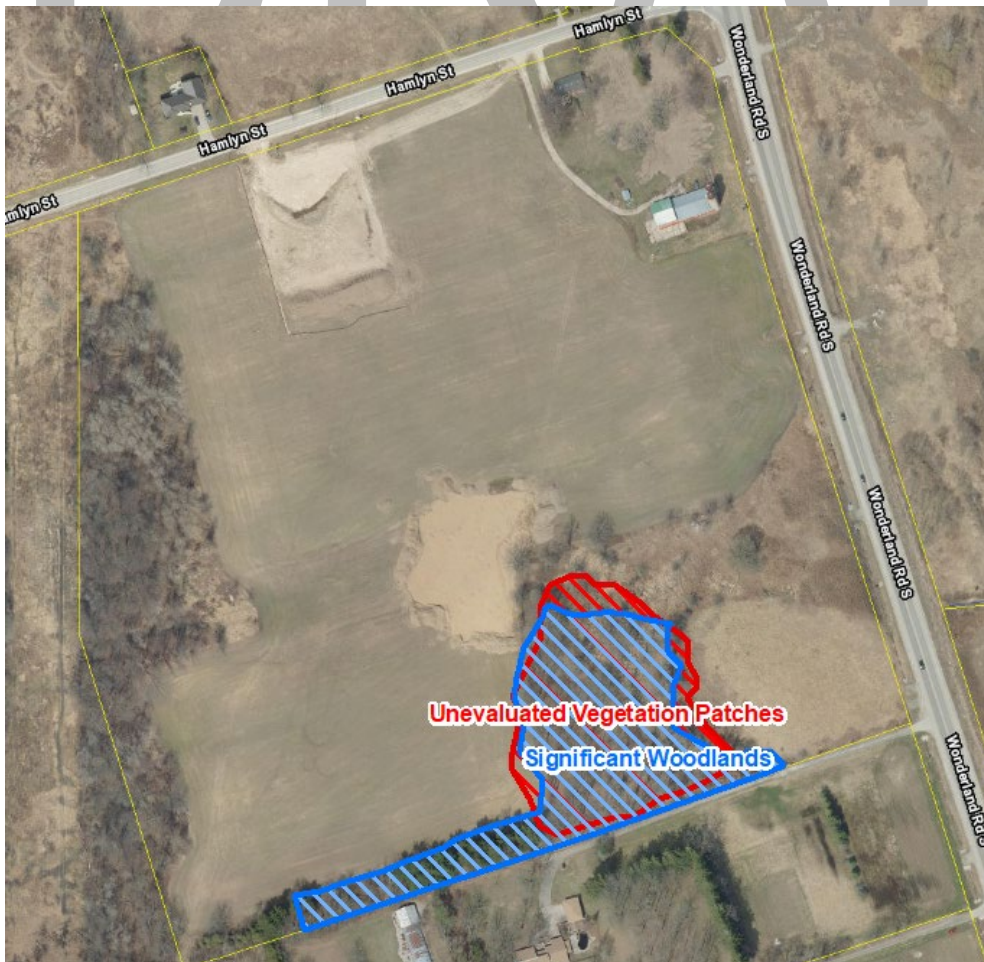
DRAFT



- 4. 930 Deveron Crescent; Previous Application: 39CD-23508
Added: Significant Woodlands



5. 2076 – 2124 Evan Boulevard; Previous Application: 39T-92020E
 Removed: Potential ESA
 Added: ESA boundary adjustment



6. 6019 Hamlyn Street; Previous Application: 39T-18504
 Removed: Unevaluated Vegetation Patches
 Added: Significant Woodlands



7. 6019 Hamlyn Street; Previous Application: 39T-18504

Removed: Unevaluated Wetlands

Added: Wetlands

DRAFT



8. 6019 Hamlyn Street; Previous Application: 39T-18504

Removed: Potential ESA

Added: ESA

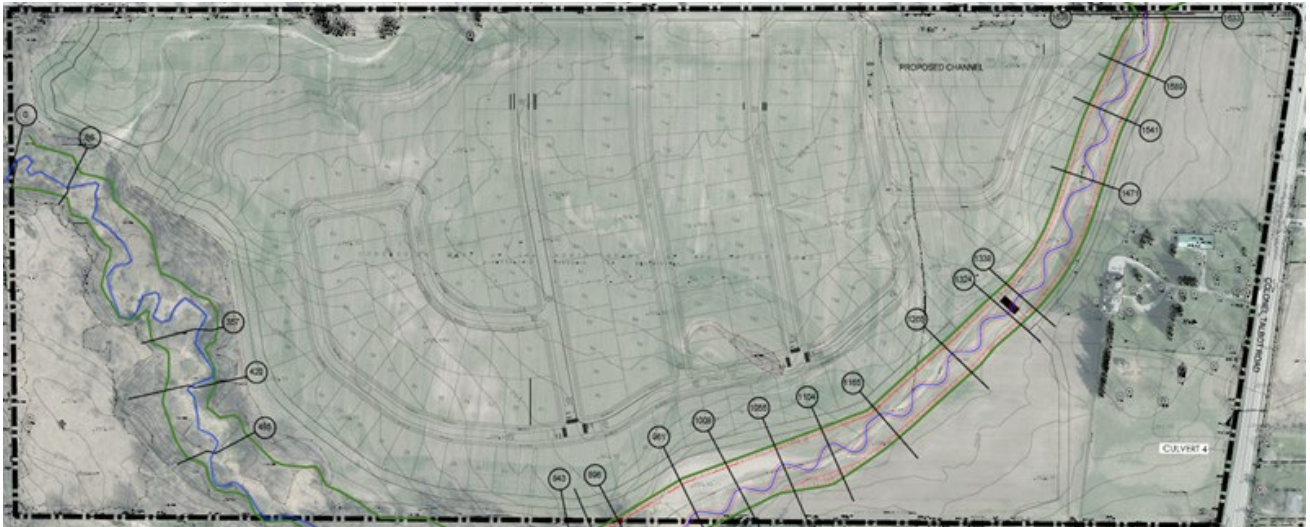


9. 325 Middleton Avenue; Previous Application: 39T-15501
 Added: Wetlands

DRAFT



10. 7395 Silver Creek Crescent; Previous Application: 39T-14504
 Removed: Eastern ESA
 Added: Western ESA

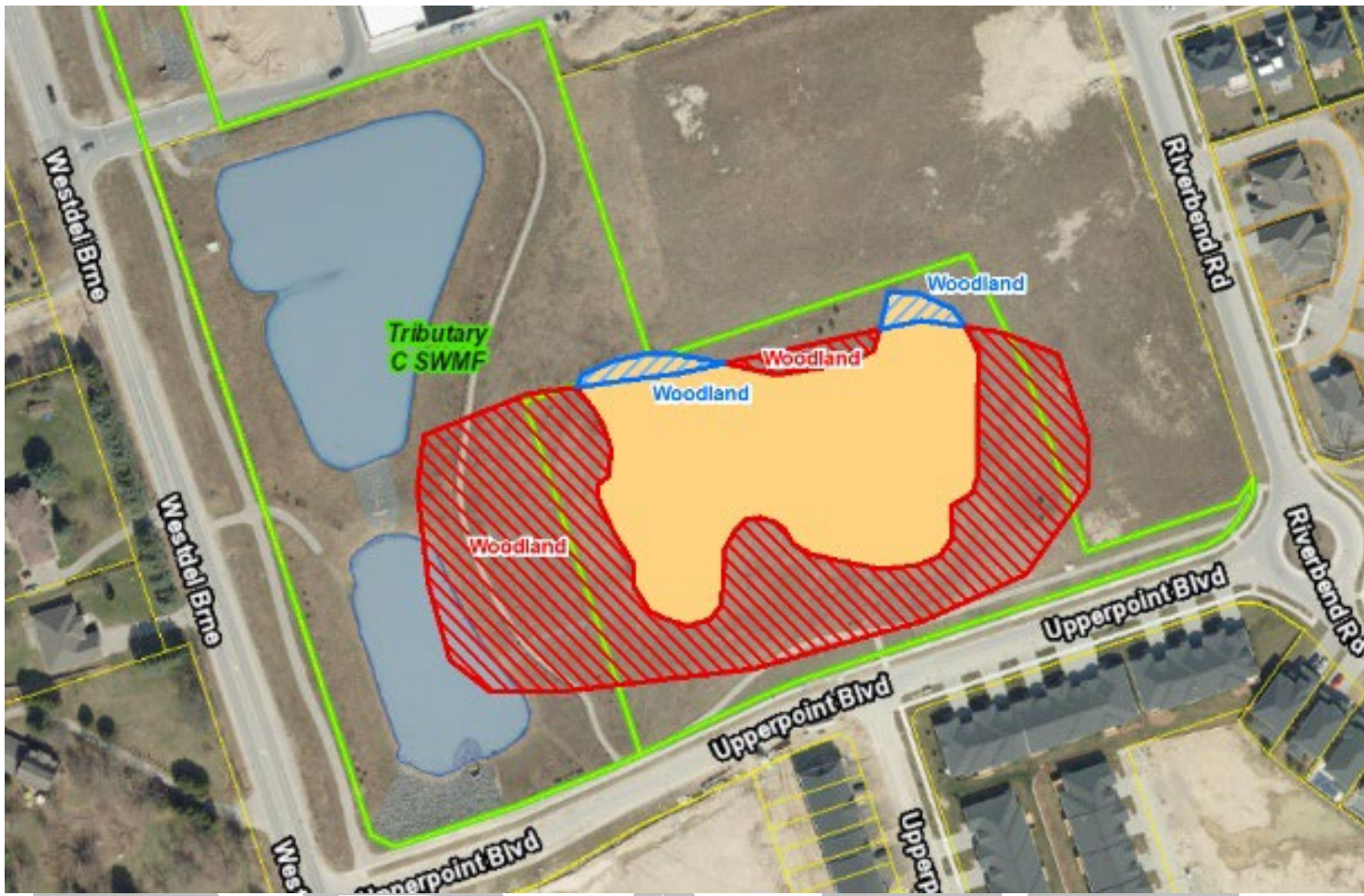


11. 7395 Silver Creek Cres; Previous Application: 39T-14504
Added: Floodplain (Green Line)

DRAFT



12. 3263 Wonderland Road South; Previous Application: OZ 6340, OZ 8590
Removed: Unevaluated Wetland



13.2080 Upperpoint Boulevard; Previous Application: 39T-14505

Removed: Woodland
 Added: Woodland



14.401 Sunningdale Road West; Previous Application: 39T-16504

Removed: Unevaluated Vegetation Patches
 Added: Significant Woodlands



15.401 Sunningdale Road West; Previous Application: 39T-16504
 Removed: Unevaluated Wetland
 Added: Wetlands

DRAFT



16.1782 Kilally Road; Previous Application: 39T-05505
 Removed: Portions of ESA boundary
 Added: Portions of ESA boundary



17. 1964 Commissioners Road East; Previous Application: 39T-19501
 Removed: Unevaluated Vegetation Patches
 Added: Significant Woodlands



18. 3700 Colonel Talbot Road Previous Application: 39T-00510
 Added: Floodplain