



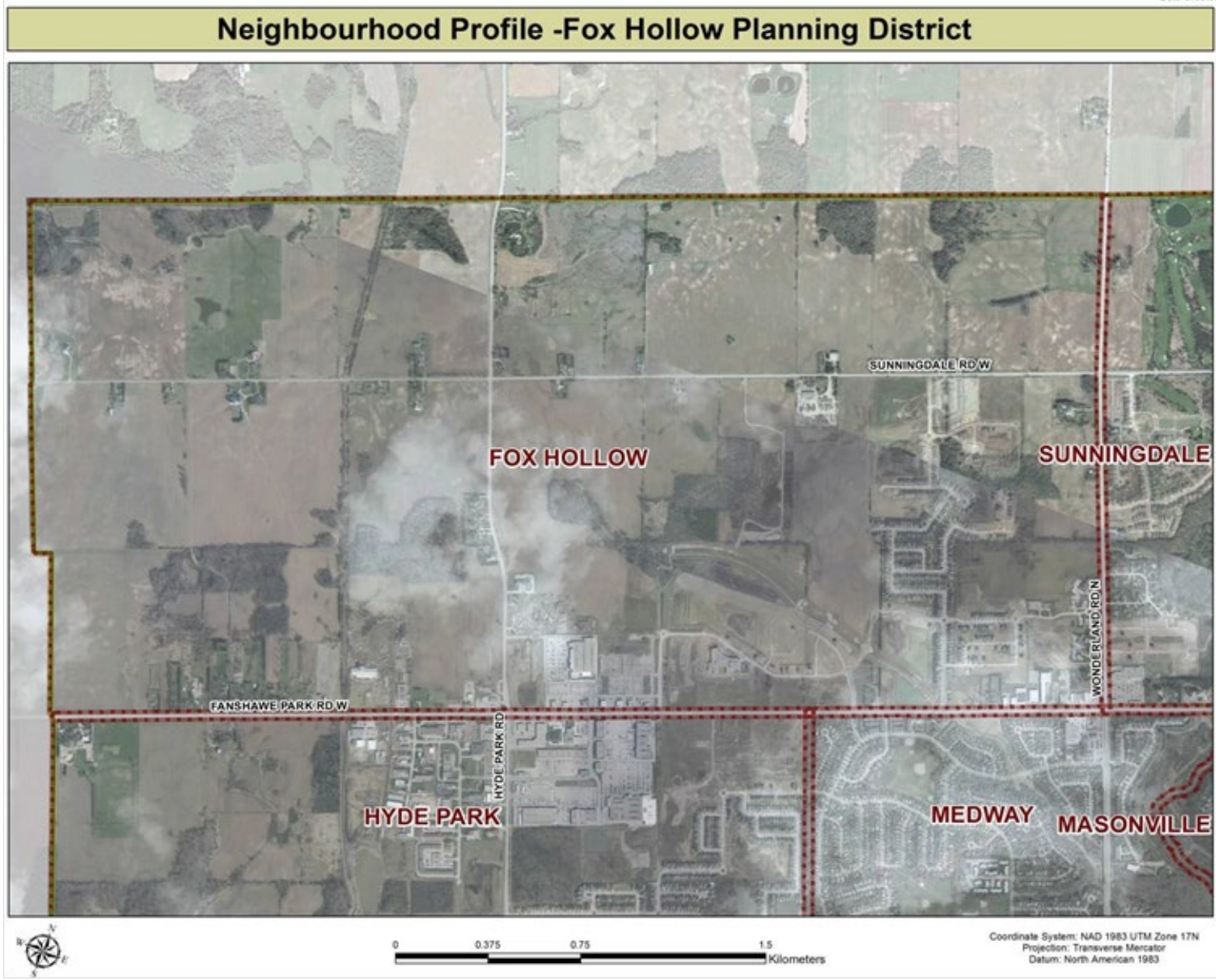
London
CANADA

City of London



Fox Hollow Neighbourhood Profile (1996-2016)

For further information contact:
Policy and Planning Support
Email: neighbourhoods@london.ca



Acknowledgment:

Profiles for all 42 neighbourhoods across the city were compiled by the Policy and Planning Division (Dr. Momodou Jeng, Laure Eldik, Randy MacTaggart, and Anna Oliveira). Thank you to Planning Services for providing the 2016 census data that informed the development of this work.

Cautionary Notes:

- 1. Comparability of Data:** caution should be used when comparing NHS data (2011) to long-form census data (1996, 2001, 2006 and 2016), **especially when it comes to data for small geographies due to a difference in data collection methodologies employed by Statistics Canada.**
- 2. Percentage Totals:** some differences in the percentage totals (not adding up to 100%) are due to rounding and sampling errors, low response rates, and data suppression related to confidentiality rules adopted by Statistics Canada.
- 3. As a % of Neighbourhood/As a % of Active Labour Force:** some differences in percentage totals (not adding up to 100%) are based on the data being compared to the overall population of the neighbourhood or the overall active labour force as opposed to the actual number of respondents to the census question (e.g. population aged 15 years and over).
- 4. Changes from Previous Neighbourhood Profiles:** some revisions and omissions of data in the current Neighbourhood Profiles are based on the way in which data was aggregated by Statistics Canada (e.g. marital status) or questions not asked in the 2016 census (e.g. religion).

Data Sources:

- 1996, 2001, 2006, 2011 and 2016 Census Data and 2011 NHS data, Statistics Canada, Ottawa.
- Customized City of London Planning District data extracted and tabulated by the City of London Planning – Urban Design and Geographic Information Systems Division and the City of London Policy and Planning Support Division.

Legend:



is a decrease



means no change



is an increase

N.A. means (Not available)

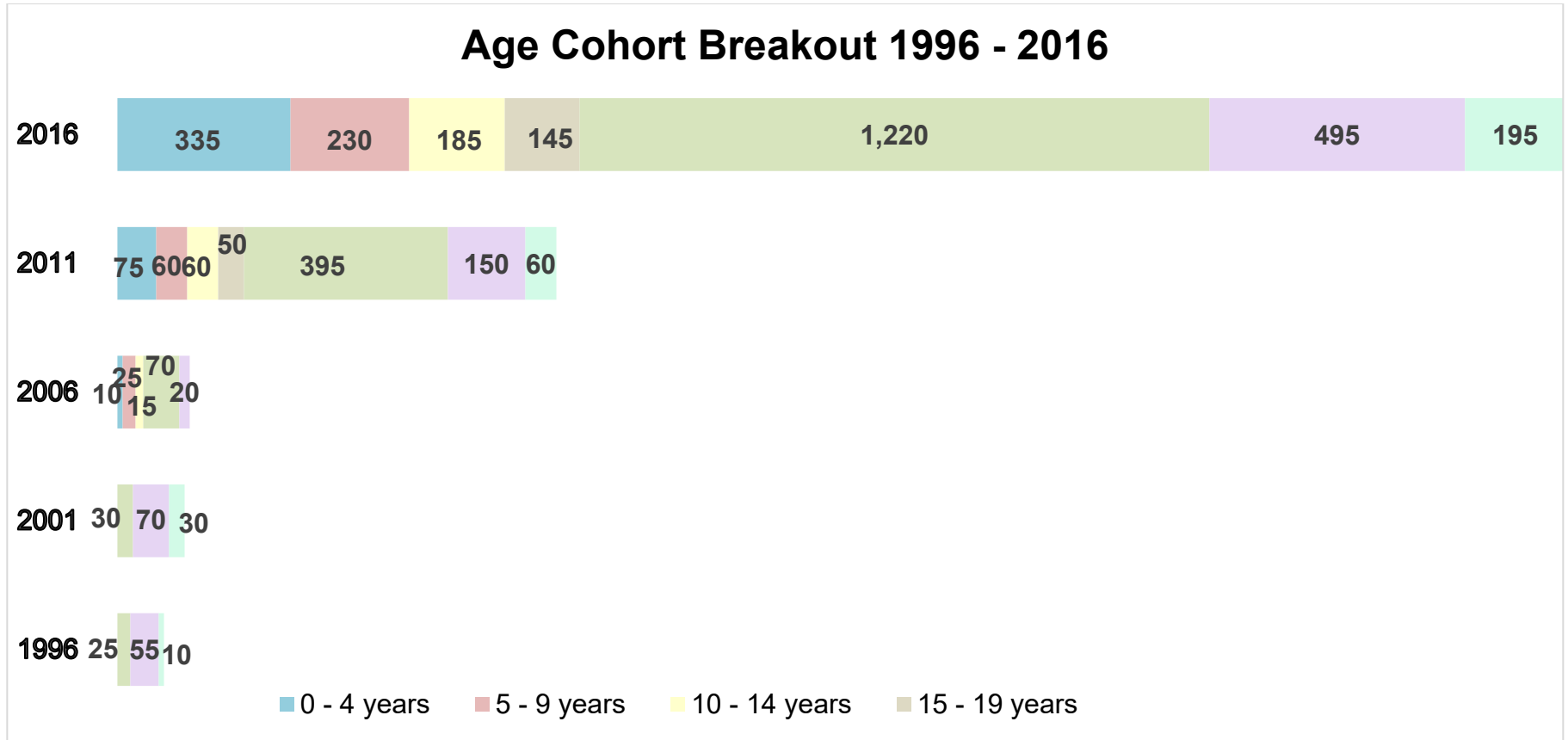
Population Characteristics & Age Distribution

Fox Hollow Neighbourhood	1996	2001	2006	2011	2016	Change From Previous Period (2011 to 2016)	
Total Population	115	165	155	850	2,820	↑	232%
Female	65	80	60	415	1,490	↑	259%
Male	50	85	95	435	1,330	↑	206%

Age Structure	1996	2001	2006	2011	2016	Change From Previous Period (2011 to 2016)		As a % of Neighbourhood
0 to 19	10	35	50	245	905	↑	269%	32%
0 to 4	N.A.	N.A.	10	75	335	↑	347%	12%
5 to 9	N.A.	N.A.	25	60	230	↑	283%	8%
10 to 14	N.A.	N.A.	15	60	185	↑	208%	7%
15 to 19	N.A.	N.A.	0	50	145	↑	190%	5%
20 to 44	25	30	70	395	1,220	↑	209%	43%
45 to 64	55	70	20	150	495	↑	230%	18%
65+	10	30	0	60	195	↑	225%	7%
Median Age	N.A.	N.A.	N.A.	31.2	32.2			

2016 Census Age Cohort Breakout	Male	Female	Total	As a % of Neighbourhood
0 to 4	180	160	340	12%
5 to 9	115	120	235	8%
10 to 14	55	130	185	7%
15 to 19	80	65	145	5%
20 to 24	50	85	135	5%
25 to 29	100	95	195	7%
30 to 34	160	225	385	14%
35 to 39	130	155	285	10%
40 to 44	105	110	215	8%
45 to 49	65	60	125	4%
50 to 54	85	85	170	6%
55 to 59	50	50	100	4%
60 to 64	60	50	110	4%
65 to 69	45	55	100	4%
70 to 74	20	30	50	2%
75 to 79	20	0	20	1%
80 to 84	10	0	10	0%
85+	10	0	10	0%
Total	1,340	1,475	2,815¹	

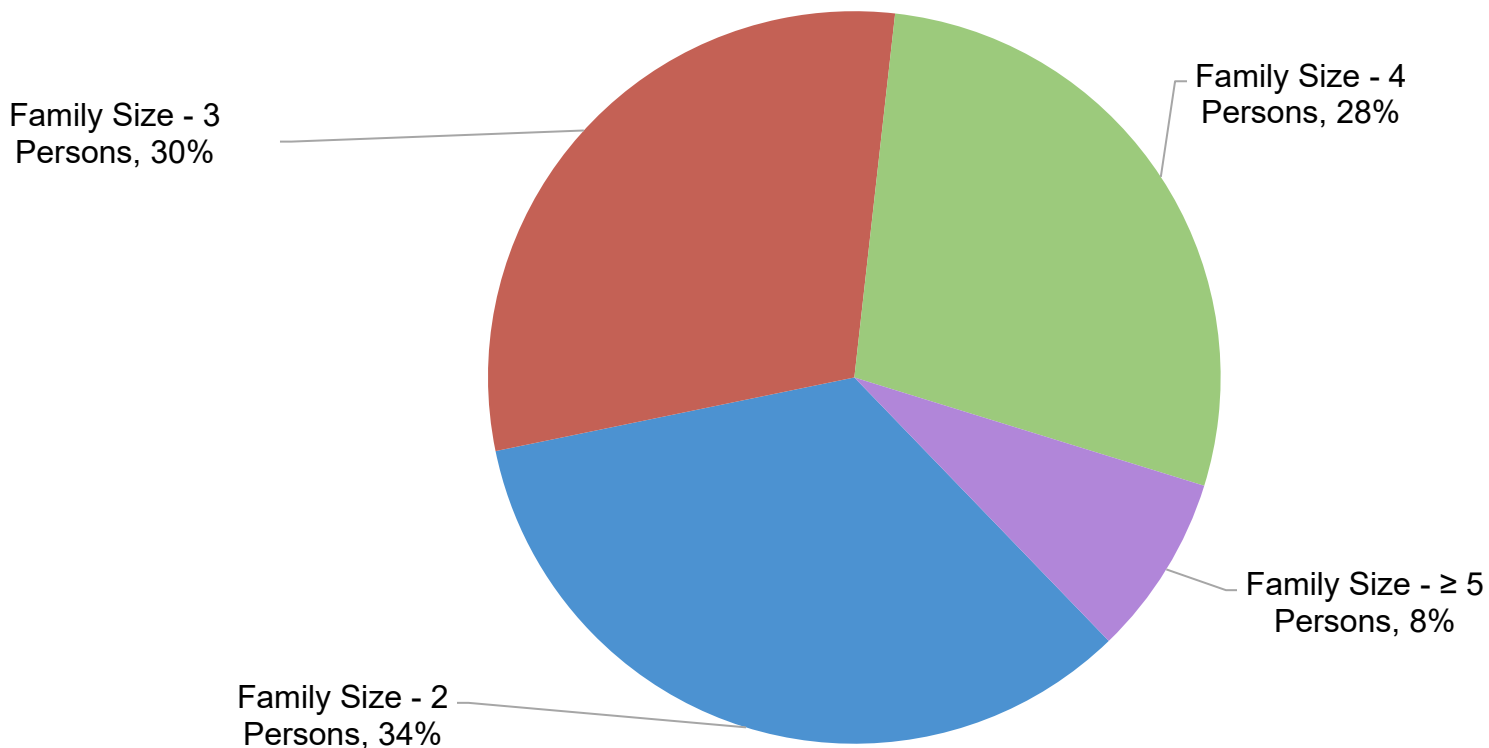
¹ There is likely to be some differences due to rounding and sampling errors.



Marital Status	1996	2001	2006	2011	2016	Change From Previous Period (2011 to 2016)		As a % of Neighbourhood
Single	15	20	20	155	400	↑	158%	14%
Married	85	90	75	395	1,315	↑	233%	47%
Common-Law	0	20	0	55	200	↑	264%	7%
Divorced	0	0	10	20	70	↑	250%	2%
Separated	0	10	0	15	55	↑	267%	2%
Widowed	0	10	0	15	25	↑	67%	1%
Citizenship, Immigration & Ethnic Identity	1996	2001	2006	2011	2016	Change From Previous Period (2011 to 2016)		As a % of Neighbourhood
Citizenship								
Canadian Citizens	115	160	155	725	2,545	↑	251%	90%
Non-Canadian Citizens	0	10	0	80	280	↑	250%	10%
Immigration Status								
Canadian Born Population	90	135	140	560	1,790	↑	220%	63%
Foreign Born Population	25	30	10	240	980	↑	308%	35%
Visible Minority Population	0	10	0	300	1,115	↑	272%	40%
Indigenous Identity Population	25	0	0	0	25	↑		1%

Family Composition	1996	2001	2006	2011	2016	Change From Previous Period (2011 to 2016)		As a % of Census Families
Number of Census Families	45	55	40	245	835	↑	241%	
Family Size - 2 Persons	20	30	10	95	280	↑	195%	34%
Family Size - 3 Persons	15	15	10	70	250	↑	257%	30%
Family Size - 4 Persons	10	0	20	50	230	↑	360%	28%
Family Size - ≥ 5 Persons	0	10	0	30	70	↑	133%	8%
Census Family - Average Size	2.9	3	2.8	3.1	3.1			

2016 FAMILY COMPOSITION

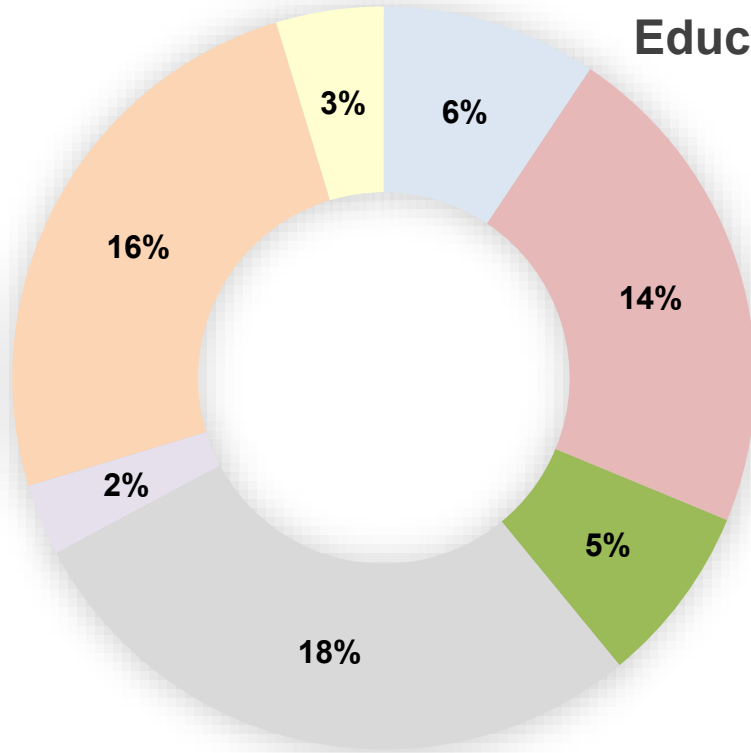


Family Structure & Number of Children	1996	2001	2006	2011	2016	Change From Previous Period (2011 to 2016)	
						↑	%
Couples (Married or Common Law)²	40	55	35	220	835	↑	280%
Without Children	20	30	10	90	240	↑	167%
With Children	20	15	25	130	505	↑	288%
Lone Parent Families	0	0	0	25	95	↑	280%
1 Child	0	0	0	10	45	↑	350%
2 Children	0	0	0	5	40	↑	700%
≥ 3 Children	0	0	0	5	10	↑	100%
Male Headed	0	0	0	5	25	↑	400%
Female Headed	0	0	0	20	70	↑	250%

² 2016 Census combines data for Married or Common Law couples without/with Children.

Educational Attainment by Credential	1996	2001	2006	2011	2016	Change From Previous Period (2011 to 2016)		As a % of Neighbourhood
No Certificate, Diploma or Degree	N.A.	N.A.	35	95	165	↑	74%	6%
High School Diploma or Equivalent	N.A.	N.A.	15	105	400	↑	281%	14%
Apprenticeship, or Trade Certificate	10	25	15	55	135	↑	145%	5%
College Certificate or Diploma	N.A.	30	20	125	515	↑	312%	18%
University Certificate or Degree	N.A.	N.A.	10	50	70	↑	40%	2%
University - Bachelor's Degree	N.A.	N.A.	10	135	450	↑	233%	16%
University Degree above bachelor level (MA or PhD)	N.A.	N.A.	0	55	75	↑	36%	3%

Education Attainment by Credential



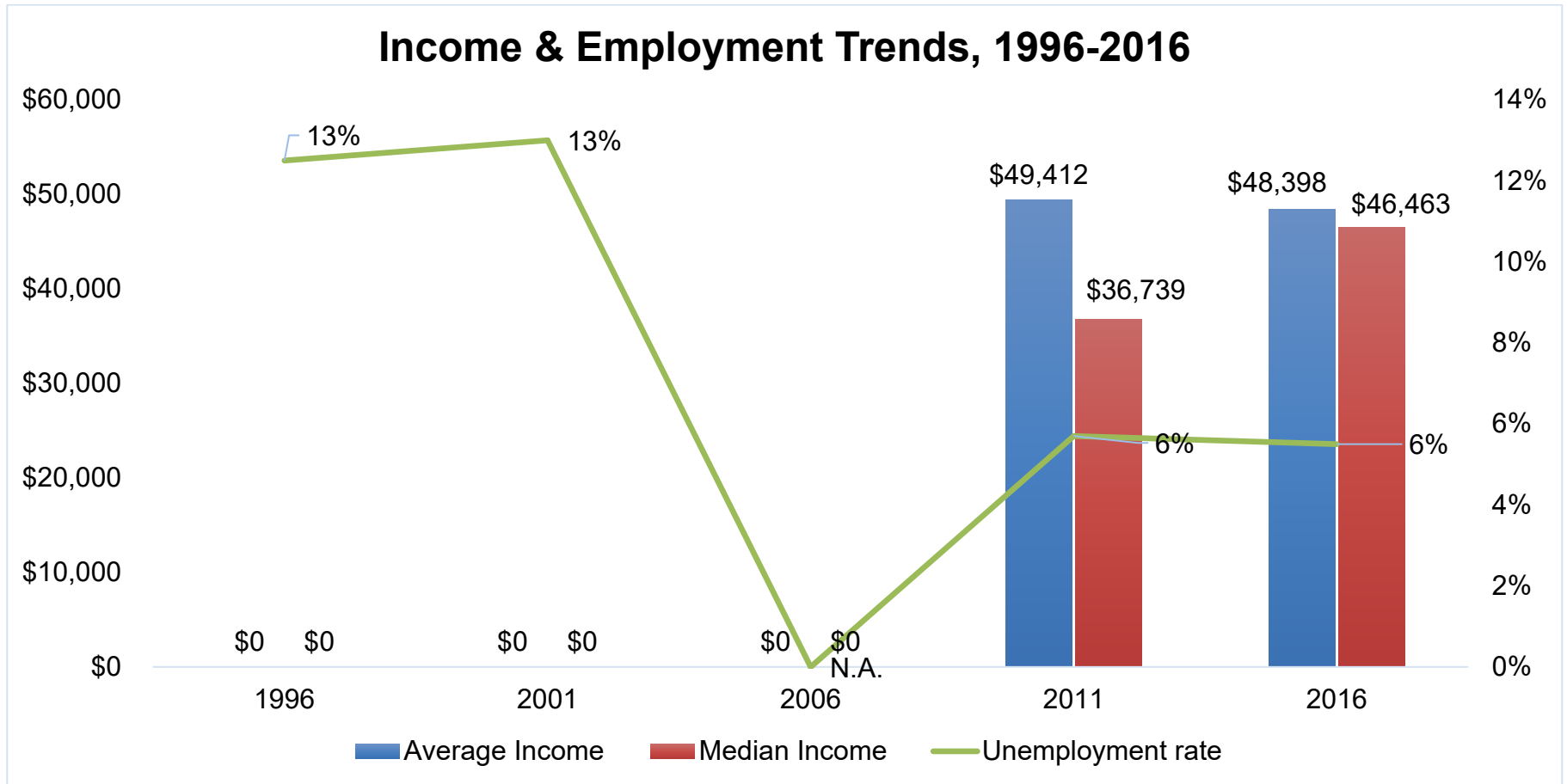
- No Certificate, Diploma or Degree
- High School Diploma or Equivalent
- Apprenticeship, or Trade Certificate
- College Certificate or Diploma
- University Certificate or Degree
- University -Bachelor's Degree
- University Degree above Bachelor level (M.A. or PhD)

Housing by Structure Type & Tenure	1996	2001	2006	2011	2016	Change From Previous Period (2011 to 2016)		As a % of Total Occupied Dwellings
Total Occupied Dwellings	45	60	55	285	935	↑	228%	
Single-Detached	45	60	45	280	750	↑	168%	80%
Semi-Detached	0	0	0	5	0	↓	-100%	0%
Row House	0	0	0	0	190	↑		20%
Duplex	0	0	0	0	0	—		0%
Apartment < 5 Storeys	0	0	0	0	0	—		0%
Apartment ≥ 5 Storeys	0	0	0	0	0	—		0%
Number of Owned Dwellings	45	55	45	245	860	↑	251%	
Owned as a % of Total	100%	85%	82%	100%	92%	↓		
Number of Rented Dwellings	0	10	10	0	80	↑		
Rented as a % of Total	0%	15%	18%	0%	9%	↑		
Average # of Rooms	10.9	9.6	7.8	8	6.8	↓		
Average Gross Rent	N.A.	N.A.	N.A.	N.A.	1,796	N.A.		
Average Value of Dwelling	\$194,702	\$215,663	\$358,115	\$325,800	\$379,197	↑	16%	

Labour Market Indicators	1996	2001	2006	2011	2016	Change From Previous Period (2011 to 2016)		As a % of Neighbourhood
Total Labour Force ≥ 15 years	80	85	90	525	1,545	↑	194%	55%
Female	45	40	40	280	730	↑	161%	26%
Male	35	45	50	240	815	↑	240%	29%
Unemployment Rate	12.5%	13%	N.A.	5.7%	5.5%	↓		
Female	N.A.	N.A.	N.A.	N.A.	6.8%	N.A.		
Male	N.A.	N.A.	N.A.	N.A.	3.7%	N.A.		
Employment Rate	N.A.	N.A.	N.A.	79.2%	70.7%	↓		
Participation Rate	N.A.	68%	82%	84%	74.8%	↓		
Female	75%	67%	80%	N.A.	67.9%	N.A.		
Male	78%	70%	83%	N.A.	82.3%	N.A.		

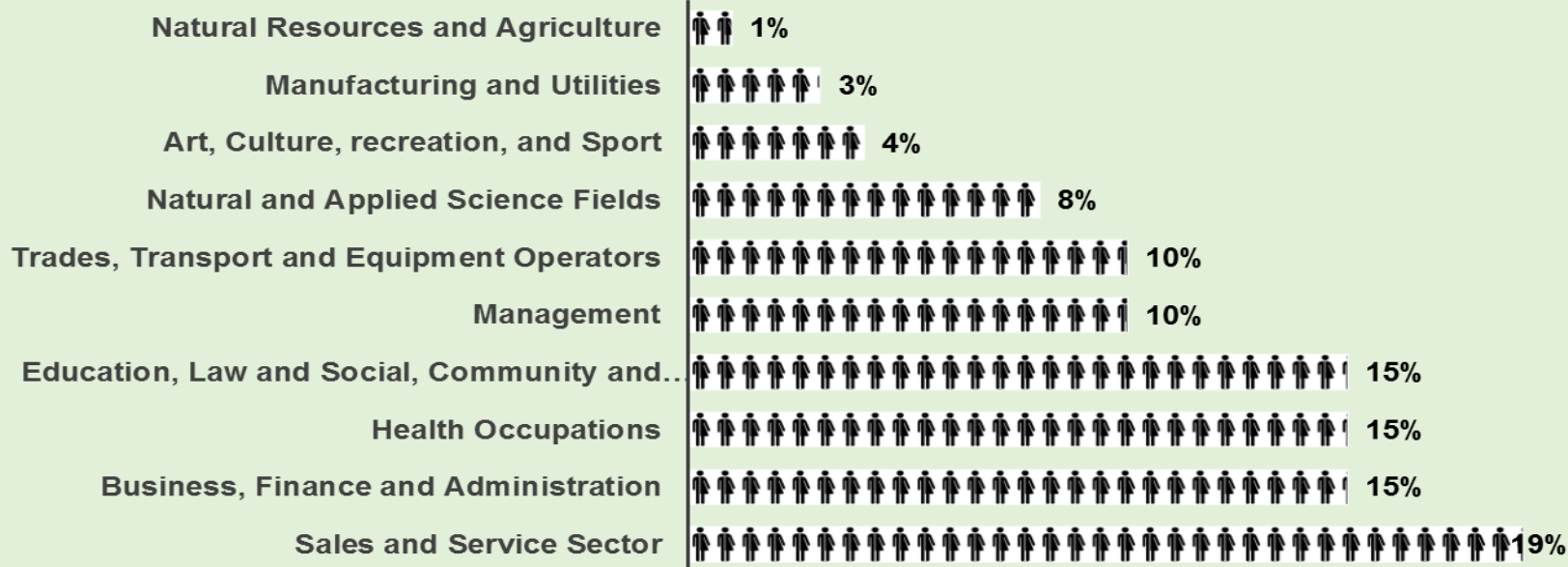
Income Characteristics of Economically Active Population ³	1996	2001	2006	2011	2016	Change From Previous Period (2011 to 2016)	
Individual Income							
Average Income	N.A.	N.A.	N.A.	\$49,412	\$48,398	↓	-2%
Median Income	N.A.	N.A.	N.A.	\$36,739	\$46,463	↑	26%
Income by Gender							
Average Income – Male	N.A.	N.A.	N.A.	\$67,725	\$53,718	↓	-21%
Average Income- Female	N.A.	N.A.	N.A.	\$33,108	\$43,433	↑	31%
Median Income – Male	N.A.	N.A.	N.A.	\$49,015	\$50,595	↑	3%
Median Income - Female	N.A.	N.A.	N.A.	\$34,695	\$38,951	↑	12%
Household Income							
Average Household Income	N.A.	N.A.	N.A.	\$108,237	\$100,942	↓	-7%
Median Household Income	N.A.	N.A.	N.A.	\$91,814	\$94,537	↑	3%
Family Income							
Average Family Income	N.A.	N.A.	N.A.	\$94,537	\$104,880	↑	11%
Median Family Income	N.A.	N.A.	N.A.	\$92,700	\$97,015	↑	5%
Lone-Parent Families							
Average Family Income	N.A.	N.A.	N.A.	\$53,293	\$78,863	↑	48%
Median Family Income	N.A.	N.A.	N.A.	\$64,540	\$71,471	↑	11%

³ Data Note: Income figures based on previous reporting year and reflect gross earnings (1995, 2000, 2005, 2010 & 2015).



Labour Force by National Occupational Classification	1996	2001	2006	2011	2016	Change From Previous Period (2011 to 2016)		As a % of Fox Hollow Active Labour Force
Management	15	0	90	70	160	↑	129%	10%
Business, Finance and Administration	10	0	20	105	225	↑	114%	15%
Natural and Applied Science Fields	0	0	0	45	120	↑	167%	8%
Health Occupations	0	10	20	25	225	↑	800%	15%
Education, Law and Social, Community and Government Services	0	0	0	100	225	↑	125%	15%
Art, Culture, recreation, and Sport	10	0	10	0	55	↑		4%
Sales and Service Sector	10	0	20	65	295	↑	354%	19%
Trades, Transport and Equipment Operators	10	25	25	70	160	↑	129%	10%
Natural Resources and Agriculture	10	0	0	0	15	↑		1%
Manufacturing and Utilities	10	0	10	20	45	↑	125%	3%

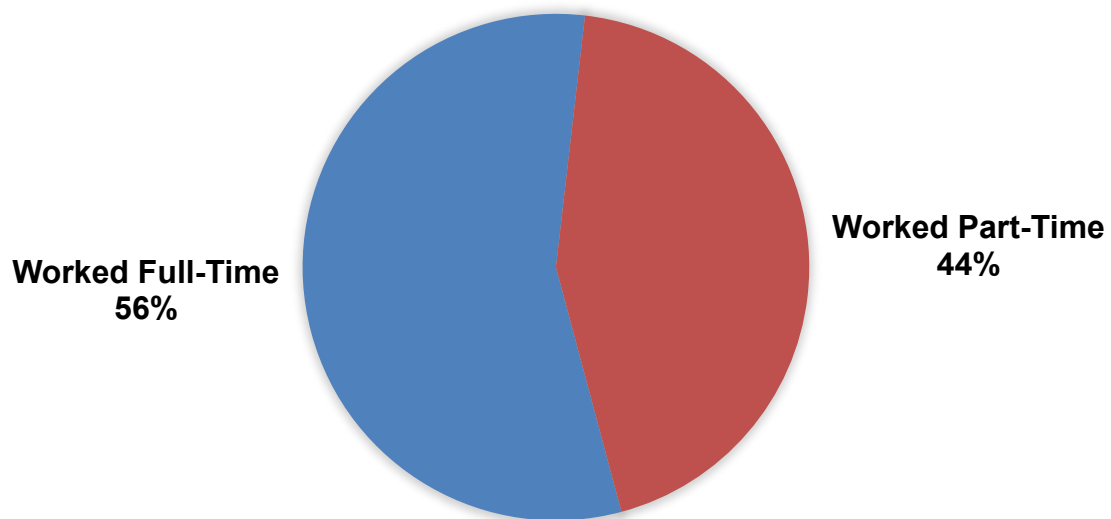
Employment Trends by Occupation Breakout - 2016



Class of Worker	1996	2001	2006	2011	2016	Change From Previous Period		As a % of Neighbourhood
Employee	70	40	70	475	1,300	↑	174%	46%
Female	40	20	40	265	650	↑	145%	23%
Male	30	20	30	215	655	↑	205%	23%
Self-Employed	0	10	15	25	215	↑	760%	8%
Female	0	0	0	0	60	↑		2%
Male	0	0	15	25	155	↑	520%	5%

Employment Status	1996	2001	2006	2011	2016	Change From Previous Period (2011 to 2016)		As a % of Fox Hollow Active Labour Force
						↑	%	
Worked Full-Time in 2015	N.A.	N.A.	N.A.	430	885	↑	106%	56%
Worked Part-Time in 2015	N.A.	N.A.	N.A.	90	690	↑	667%	44%

Employment Status, 2015 Reference Period



Mode of Transport to Work	1996	2001	2006	2011	2016	Change From Previous Period (2011 to 2016)		As a % of Fox Hollow Active Labour Force
Automobile - As a Driver	45	60	75	385	1,210	↑	214%	78%
Car-Pool	20	10	25	0	50	↑		3%
Public Transportation	0	0	0	0	30	↑		2%
Walked or Bicycled	0	0	0	0	45	↑		3%
Other Modes	0	0	0	0	10	↑		1%

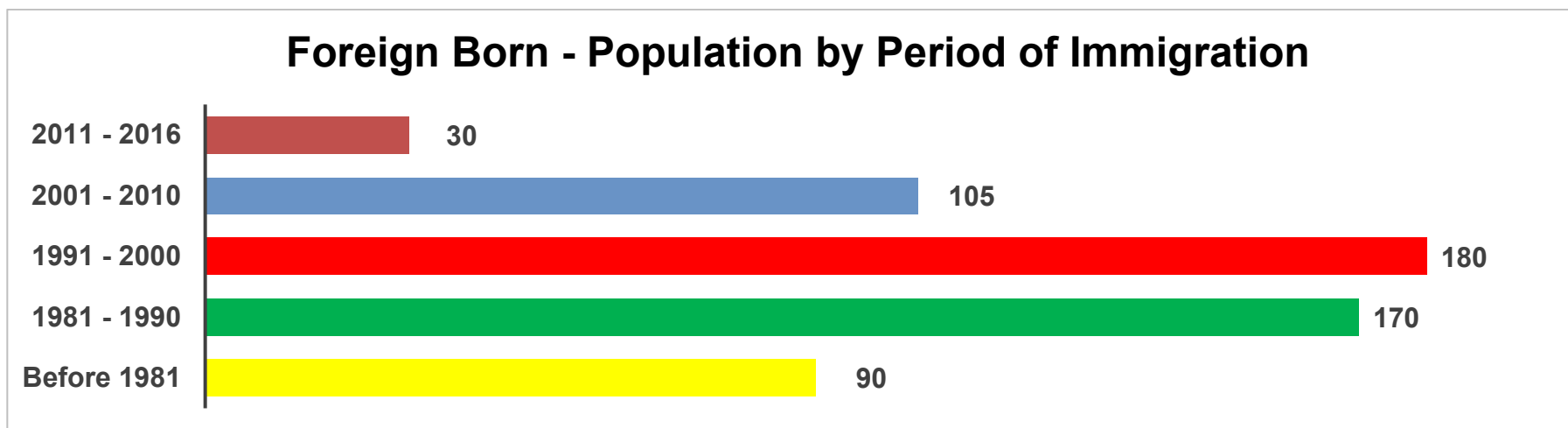
Place of Work	1996	2001	2006	2011	2016	Change From Previous Period (2011 to 2016)		As a % of Neighbourhood
Worked at Home	10	0	10	45	95	↑	111%	3%
Worked at a Fixed Address	55	45	70	385	1,180	↑	206%	42%
No Fixed Workplace Address	0	15	20	65	170	↑	162%	6%
Worked within Municipality	50	55	65	N.A.	995	N.A.		35%
Work in a different Municipality	0	0	50	N.A.	105	N.A.		4%
Worked outside Canada	0	0	0	0	15	↑		1%

Mobility/Migration Status	1996	2001	2006	2011	2016	Change From Previous Period (2011 to 2016)		As a % of Neighbourhood
Lived at the same address 5 years ago	110	60	120	195	495	↑	154%	18%
Moved sometime within the last 5 years	0	95	20	525	1,995	↑	280%	71%
Internal Migrants	0	0	0	75	625	↑	733%	22%
- Intra-provincial	0	0	0	25	475	↑	1,800%	17%
- Inter-provincial	0	0	0	25	150	↑	500%	5%
External Migrants	0	15	0	50	120	↑	140%	4%
Lived at the same address 1 year ago	115	155	155	725	1,985	↑	174%	70%
Moved sometime within the last year	0	10	0	55	735	↑	1,236%	26%
Internal Migrants	0	0	0	0	245	↑		9%
- Intra-provincial	0	0	0	0	200	↑		7%
- Inter-provincial	0	0	0	0	45	↑		2%
External Migrants	0	0	0	0	35	↑		1%

Place of Birth by Region	2011	2016	Change From Previous Period (2011 to 2016)		As a % of Neighbourhood
Total Immigrant Population	235	985	↑	319%	35%
North America (US only)	N.A.	35	N.A.		1%
Africa	0	65	↑		2%
Asia	130	445	↑	242%	16%
Caribbean	N.A.	N.A.	N.A.		N.A.
Central and South America	N.A.	55	N.A.		2%
Oceania and other places of birth	N.A.	0	N.A.		0%
Europe	40	205	↑	413%	7%
Recent Immigrants	60	180	↑	200%	6%
North America (US only)	N.A.	0	N.A.		0%
Africa	N.A.	15	N.A.		1%
Asia	N.A.	110	N.A.		4%
Caribbean	N.A.	N.A.	N.A.		N.A.
Central and South America	N.A.	35	N.A.		1%
Oceania and other places of birth	N.A.	0	N.A.		0%
Europe	N.A.	10	N.A.		<1%

Immigration by Place of Birth 2011	2011	As a % of Neighbourhood 2011	Immigration by Place of Birth 2016	2016	As a % of Neighbourhood 2016
1. N.A.	N.A.	N.A.	1. Colombia	160	6%
2. N.A.	N.A.	N.A.	2. South Korea	90	3%
3. N.A.	N.A.	N.A.	3. Philippines	70	2%
4. N.A.	N.A.	N.A.	4. China	60	2%
5. N.A.	N.A.	N.A.	5. India	55	2%
6. N.A.	N.A.	N.A.	6. Afghanistan	40	1%
7. N.A.	N.A.	N.A.	7. United States	35	1%
8. N.A.	N.A.	N.A.	8. Poland	35	1%
9. N.A.	N.A.	N.A.	9. Romania	35	1%
10. N.A.	N.A.	N.A.	10. Iraq	30	1%

Period of Immigration	1996	2001	2006	2011	2016	Change From Previous Period (2011 to 2016)		As a % of Neighbourhood
						↑	%	
Before 1981	N.A.	N.A.	20	15	80	↑	433%	3%
1981 to 1990	N.A.	N.A.	0	25	85	↑	240%	3%
1991 to 2000	N.A.	N.A.	0	60	190	↑	217%	7%
2001 to 2010	N.A.	N.A.	0	130	450	↑	246%	16%
2011 to 2016	N.A.	N.A.	N.A.	N.A.	180	N.A.		N.A.



Language	1996	2001	2006	2011	2016	Change From Previous Period (2011 to 2016)		As a % of Neighbourhood
Knowledge of Official Languages								
English Only	85	155	145	750	2,515	↑	235%	89%
French Only	0	0	0	0	0	—		0%
English and French	30	10	15	60	265	↑	342%	9%
Neither English or French	0	0	0	25	40	↑	60%	1%
Language Spoken Most Often at Home								
English	75	130	155	615	2,080	↑	238%	74%
French	30	10	0	0	30	↑		1%
Non-Official Language	15	30	0	180	460	↑	156%	16%
Mother Tongue ⁴								
English	75	145	155	535	1,805	↑	237%	64%
French	30	0	0	10	40	↑	300%	1%
Non-Official Language	10	0	0	270	890	↑	230%	32%

⁴ Statistics Canada defines 'mother tongue' as the first language learned in childhood and still understood by the individual at the time of census reporting.

Top Non-Official Languages Spoken At Home ⁵	2016	As a % of Neighbourhood
Spanish	155	5%
Korean	45	2%
Mandarin	45	2%
Kurdish	40	1%
Arabic	20	1%
Gujarati	20	1%
Persian (Farsi)	20	1%
Japanese	20	1%
Polish	10	<1%
Russian	10	<1%

⁵ Data Note: The 2011 Neighbourhood profiles data reported on languages was discontinued in 2016; therefore, cannot be compared to 2016 data.