



City of London

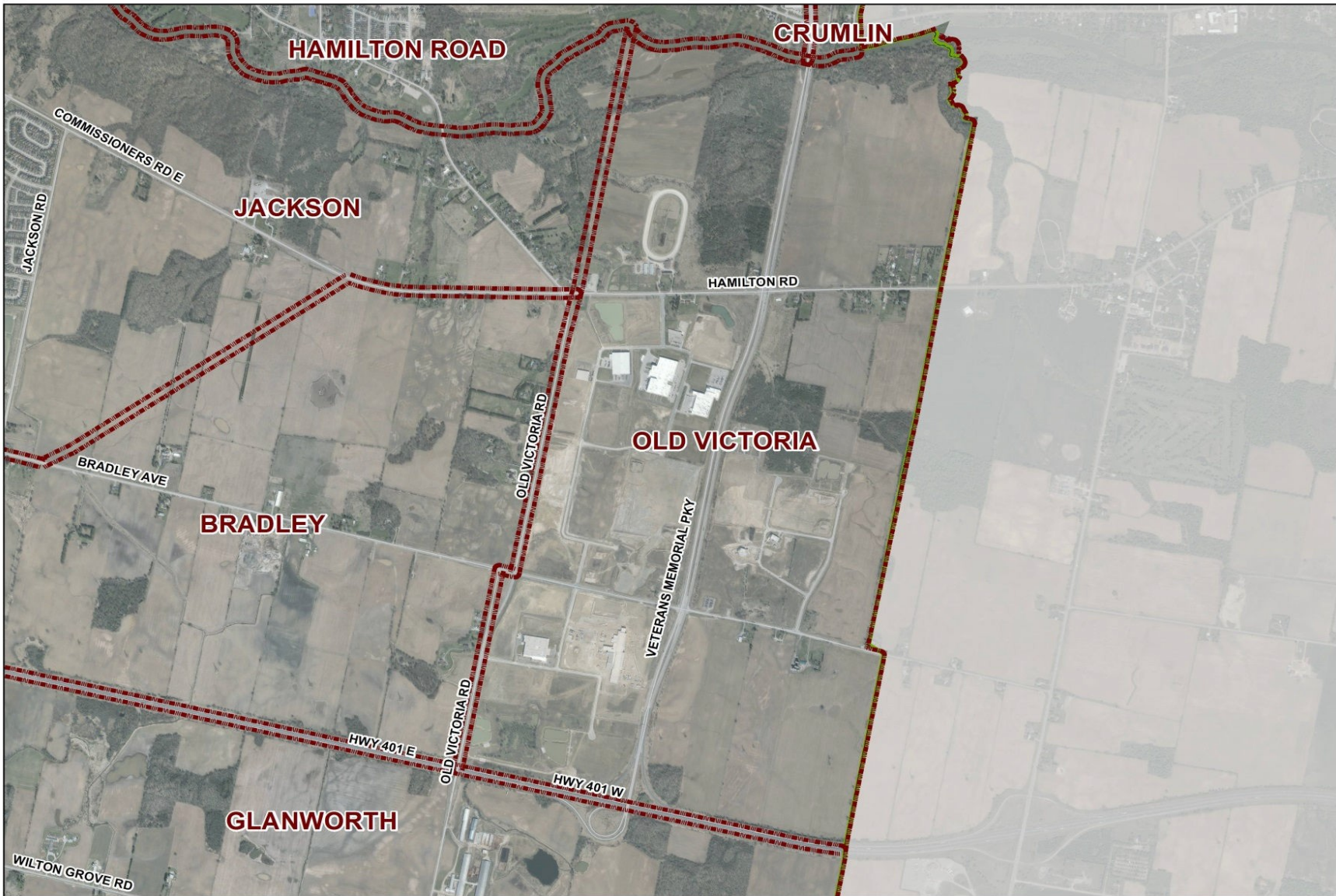


Old Victoria Neighbourhood Profile (1996-2016)

For further information contact:

Policy and Planning Support
Email: neighbourhoods@london.ca

Neighbourhood Profile -Old Victoria Planning District



Coordinate System: NAD 1983 UTM Zone 17N
Projection: Transverse Mercator
Datum: North American 1983

Acknowledgment:

Profiles for all 42 neighbourhoods across the city were compiled by the Policy and Planning Division (Dr. Momodou Jeng, Laure Eldik, Randy MacTaggart, and Anna Oliveira). Thank you to Planning Services for providing the 2016 census data that informed the development of this work.



Cautionary Notes:


- 1. Comparability of Data:** caution should be used when comparing NHS data (2011) to long-form census data (1996, 2001, 2006 and 2016), **especially when it comes to data for small geographies due to a difference in data collection methodologies employed by Statistics Canada.**
- 2. Percentage Totals:** some differences in the percentage totals (not adding up to 100%) are due to rounding and sampling errors, low response rates, and data suppression related to confidentiality rules adopted by Statistics Canada.
- 3. As a % of Neighbourhood/As a % of Active Labour Force:** some differences in percentage totals (not adding up to 100%) are based on the data being compared to the overall population of the neighbourhood or the overall active labour force as opposed to the actual number of respondents to the census question (e.g. population aged 15 years and over).
- 4. Changes from Previous Neighbourhood Profiles:** some revisions and omissions of data in the current Neighbourhood Profiles are based on the way in which data was aggregated by Statistics Canada (e.g. marital status) or questions not asked in the 2016 census (e.g. religion).

Data Sources:

- 1996, 2001, 2006, 2011 and 2016 Census Data and 2011 NHS data, Statistics Canada, Ottawa.
- Customized City of London Planning District data extracted and tabulated by the City of London Planning – Urban Design and Geographic Information Systems Division and the City of London Policy and Planning Support Division.

Legend:

 is a decrease
 means no change

 is an increase
N.A. means (Not available)

Population Characteristics & Age Distribution

Old Victoria Neighbourhood	1996	2001	2006	2011	2016	Change From Previous Period (2011 to 2016)	
Total Population	N.A.	N.A.	N.A.	N.A.	N.A.	N.A.	
Female	N.A.	N.A.	N.A.	N.A.	N.A.	N.A.	
Male	N.A.	N.A.	N.A.	N.A.	N.A.	N.A.	

Age Structure	1996	2001	2006	2011	2016	Change From Previous Period (2011 to 2016)		As a % of Neighbourhood
0 to 19	N.A.	N.A.	N.A.	N.A.	N.A.	N.A.		N.A.
0 to 4	N.A.	N.A.	N.A.	N.A.	N.A.	N.A.		N.A.
5 to 9	N.A.	N.A.	N.A.	N.A.	N.A.	N.A.		N.A.
10 to 14	N.A.	N.A.	N.A.	N.A.	N.A.	N.A.		N.A.
15 to 19	N.A.	N.A.	N.A.	N.A.	N.A.	N.A.		N.A.
20 to 44	N.A.	N.A.	N.A.	N.A.	N.A.	N.A.		N.A.
45 to 64	N.A.	N.A.	N.A.	N.A.	N.A.	N.A.		N.A.
65+	N.A.	N.A.	N.A.	N.A.	N.A.	N.A.		N.A.
Median Age	N.A.	N.A.	N.A.	N.A.	N.A.			